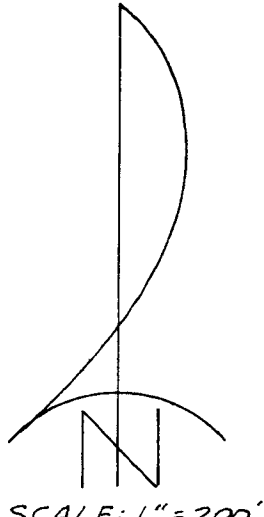


SURVEY FOR: JACK RUSSELL  
LOCATED IN THE S.W. 1/4 OF SECTION 29, T.38S., R.2W., W.M.

BY: BOYDEN SURVEYORS  
MAY 24, 1981

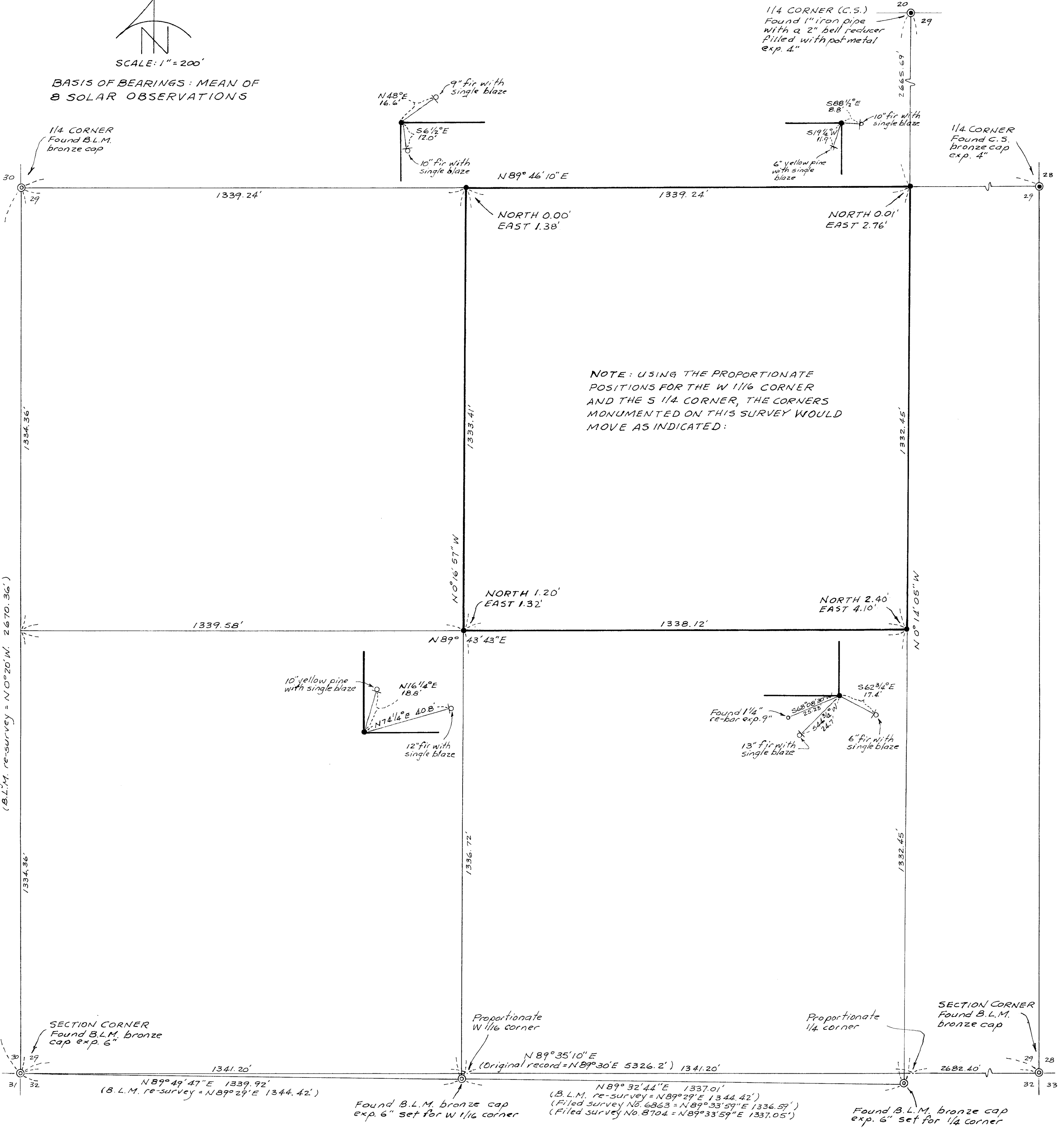
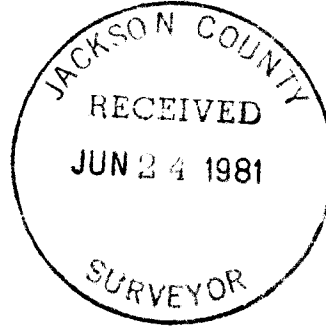


SCALE: 1" = 200'

BASIS OF BEARINGS: MEAN OF 8 SOLAR OBSERVATIONS

REGISTERED  
PROFESSIONAL  
LAND SURVEYOR  
*Gary D. Kaiser*  
ORDERED  
JULY 19, 1981  
GARY D. KAISER

- ⊙ Corner re-established by the County Surveyor's office
  - ⊙ Corner monumented by the B.L.M.
  - Set 5/8" x 30" re-bar with plastic cap marked "KAISER RLS 803"
- Original record: SEWALL TRUAX 1857  
B.L.M. re-survey: 1961 and 1975



NOTE: USING THE PROPORTIONATE POSITIONS FOR THE W 1/16 CORNER AND THE S 1/4 CORNER, THE CORNERS MONUMENTED ON THIS SURVEY WOULD MOVE AS INDICATED:

1/4 CORNER (C.S.)  
Found 1" iron pipe with a 2" bell reducer filled with pot metal exp. 4"

1/4 CORNER  
Found C.S. bronze cap exp. 4"

1/4 CORNER  
Found B.L.M. bronze cap

SECTION CORNER  
Found B.L.M. bronze cap exp. 6"

SECTION CORNER  
Found B.L.M. bronze cap

Found B.L.M. bronze cap exp. 6" set for W 1/16 corner

Found B.L.M. bronze cap exp. 6" set for 1/4 corner

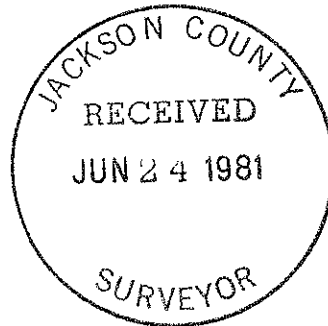
Found B.L.M. bronze cap (Original record = N89°30'E 5326.2')  
Found B.L.M. bronze cap (B.L.M. re-survey = N89°29'E 1344.42')  
Found B.L.M. bronze cap (Filed survey No. 6363 = N89°33'59"E 1336.57')  
Found B.L.M. bronze cap (Filed survey No. 8704 = N89°33'59"E 1337.05')

N0°16'05"W  
(Original record = North 2640.0')  
(B.L.M. re-survey = N0°20'W. 2670.36')

Survey No. 8882

SURVEY NARRATIVE TO COMPLY WITH O.R.S. 209.250

FOR: Jack Russell  
P.O. Box 1094  
Roseburg, Oregon



BY: Boyden Surveyors  
108 Mistletoe Street  
Medford, Oregon

PURPOSE: To monument the corners and mark the boundaries of the Northeast Quarter of the Southwest Quarter of Section 29, T38SR2W, W.M.

During the process of performing this survey, a protest was filed with the Cadastral Surveyor of the B.L.M. by the Jackson County Surveyor on the positioning of the Quarter corner and the East and West one-sixteenth corners on the South boundary of Section 29 (see letters dated April 3 and April 22, 1981 and other data in the County Surveyor's File No. 81-7). This matter was discussed with our client and advised by our firm that it may take considerable time before this matter is resolved. The owner informed our firm that the differences involved here are not great enough to seriously affect our client's short-term needs.

PROCEFURE: Utilizing a one second theodolite and EDM equipment, the controlling corner monuments were tied and monuments were set at positions which will become the true one-sixteenth corners if the Cadastral Surveyor of the BLM prevails in this matter. If in the final analysis, the County Surveyor prevails and the corners in question are moved to proportionate positions between the monumented Southeast and Southwest corners of Section 29, the subject Quarter Quarter Section corners would move as indicated on the annexed map.

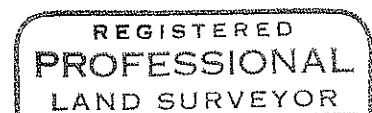
Trees along the monumented lines of the subject Quarter Quarter Section were blazed.

Distance and bearings to reference trees from the monuments set were measured to the face of the blazes.

Basis of Bearings is the mean of 8 solar observations.

May 24, 1981

(TL600) 38 2W 29



*Gary D. Kaiser*

