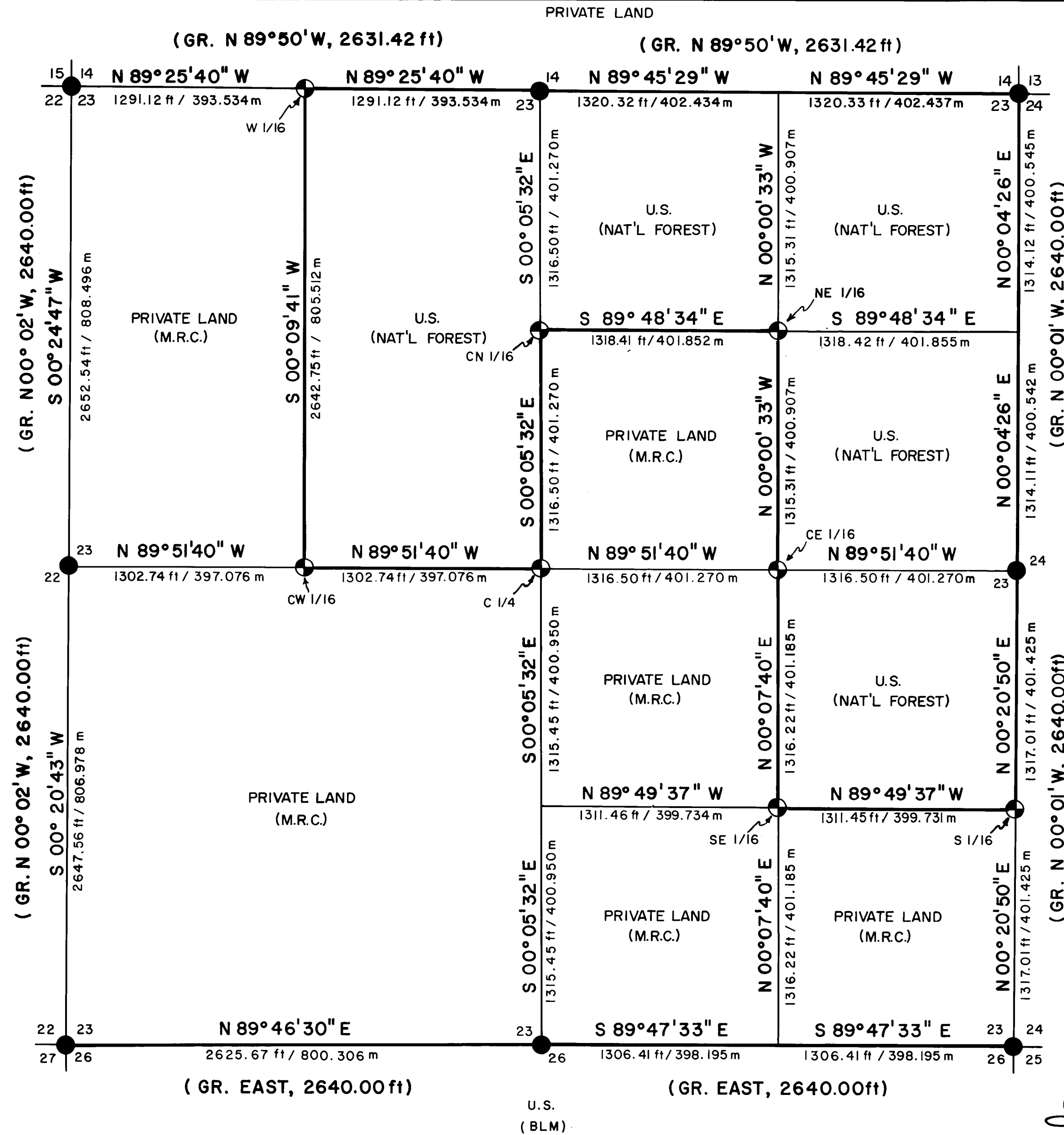


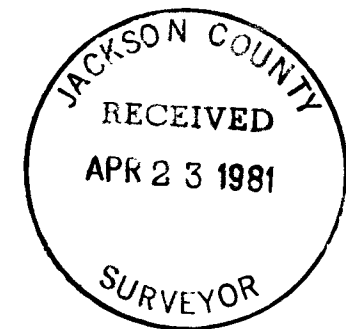
MAP OF SURVEY
FOR
ROGUE RIVER NATIONAL FOREST
P.O. BOX 520
MEDFORD, OREGON
and
MEDFORD RESOURCES CORPORATION
P.O. BOX 550
MEDFORD, OREGON
MARCH 30, 1981



U.S. (BLM)



BASIS OF BEARING = SOLAR OBSERVATION
 SCALE IN FEET
 0 500 1000
 SCALE IN METERS
 0 100 200 400
 1 METER = 3.280833 FEET



REGISTERED PROFESSIONAL LAND SURVEYOR
 HAROLD L. CENTER
 JULY 30, 1974
 No. 1071

REGISTERED PROFESSIONAL LAND SURVEYOR
 ARTHUR R. RAMBO
 JULY 30, 1974
 No. 1086

HISTORY OF SURVEYS
 ORIGINAL SURVEYS WERE PERFORMED BY EUGENE B. HENRY, UNITED STATES DEPUTY SURVEYOR, UNDER CONTRACT NO. 774 DATED JANUARY 30, 1908. ORIGINAL MONUMENTS ESTABLISHED BY HENRY WERE REMONUMENTED BY THE BUREAU OF LAND MANAGEMENT, CADASTRAL SURVEYS DIVISION, OR THE JACKSON COUNTY SURVEYOR. NO OTHER SURVEYS OF RECORD.

LEGEND

- FOUND STANDARD BLM OR COUNTY SURVEYOR MONUMENT.
- ⊕ SET 2 1/2" DIA. X 30" LG. IRON POST WITH 2 1/2" DIA. BRASS CAP UNLESS OTHERWISE NOTED.
- GR. GOVERNMENT RECORD.
- SECTION LINE CALCULATED FROM TRAVERSE SURVEY.
- PROPERTY LINE ESTABLISHED AND POSTED THIS SURVEY.

CERTIFICATE OF SURVEY

WE, HAROLD L. CENTER AND ARTHUR R. RAMBO, REGISTERED PROFESSIONAL LAND SURVEYORS WITHIN THE STATE OF OREGON, DO HEREBY CERTIFY THAT WE HAVE SURVEYED AND MARKED WITH MONUMENTS THE LANDS REPRESENTED ON THIS MAP OF SURVEY AT THE REQUEST OF THE U.S. FOREST SERVICE AND MEDFORD RESOURCES CORPORATION.

HAROLD L. CENTER
 PROFESSIONAL LAND SURVEYOR
 OREGON CERTIFICATE NO. 1071

ARTHUR R. RAMBO
 PROFESSIONAL LAND SURVEYOR
 OREGON CERTIFICATE NO. 1086

U.S. DEPARTMENT OF AGRICULTURE FOREST SERVICE	
REGION 6	ROGUE RIVER NAT. FOREST
DEPENDENT RESURVEY and SECTION SUBDIVISION SEC. 23, T. 34 S., R. 2 E., W.M. JACKSON COUNTY, OREGON	
REVIEWED BY <i>D. McDonald</i>	DATE <i>9 April 1981</i>
REVIEWED BY <i>R. Hattaway</i>	DATE <i>4/9/81</i>

From which the following references:

A 13-inch diameter fir bears N 22° 48' E 39.30 feet distance. Scribed
CW 1/16 S23 LS 1071 BT.

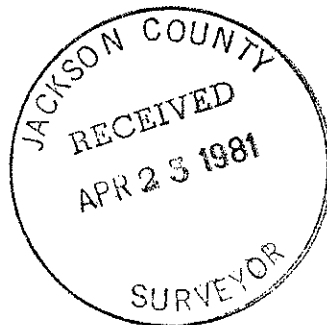
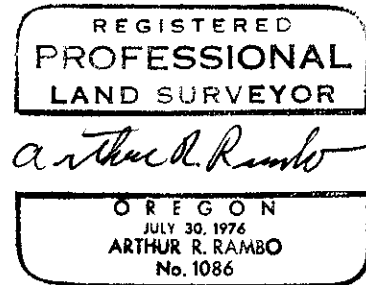
A 15-inch diameter fir bears S 86° 47' W 44.80 feet distance. Scribed
CW 1/16 S23 LS 1071 BT.

March 30, 1981

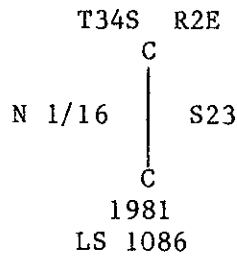
HAROLD L. CENTER
Registered Professional Land Surveyor
Oregon Certificate No. 1071



ARTHUR R. RAMBO
Registered Professional Land Surveyor
Oregon Certificate No. 1086



At the Corner point I set a 2 1/2-inch diameter galvanized iron post with a 2 1/2-inch diameter brass cap marked:



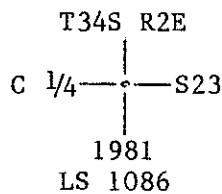
From which the following references:

A 12-inch diameter fir bears S 67° 51' E 9.10 feet distance, scribed CN 1/16 S23 LS 1086 BT.

A 10-inch diameter fir bears S 53° 40' W 33.50 feet distance, scribed CN 1/16 S23 LS 1086 BT.

Center one-quarter corner Section 23, Township 34 South, Range 2 East.

At the Corner point I set a 2 1/2-inch diameter galvanized iron post with a 2 1/2-inch diameter brass cap monument marked:



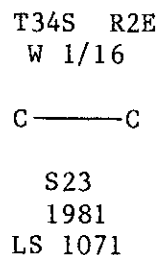
From which the following references:

A 27-inch diameter fir bears N 69° 54' W 29.52 feet distance, scribed C1/4 S23 LS 1086 BT.

A 15-inch diameter fir bears S 14° 55' W 17.70 feet distance, scribed C1/4 S23 LS 1086 BT.

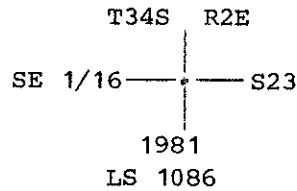
Center-West one-sixteenth corner Section 23, Township 34 South Range 2 East.

At the corner point I set a 2 1/2-inch diameter galvanized iron post with 2 1/2-inch diameter brass cap marked:



Southeast one-sixteenth corner Section 23, Township 34 South, Range 2 East.

At the corner point I set a 2½-inch diameter galvanized iron post with a 2½-inch diameter brass cap monument marked:



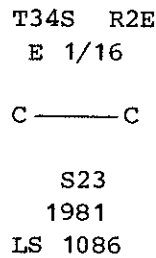
From which the following references:

A 11-inch diameter fir bears N 52° 55' W 11.70 feet distance, scribed SE 1/16 S23 LS 1086 BT.

A 9-inch diameter fir bears S 89° 17' E 25.97 feet distance, scribed SE 1/16 S23 LS 1086 BT.

Center-East one-sixteenth corner Section 23, Township 34 South, Range 2 East.

At the corner point I set a 2½-inch diameter galvanized iron post with a 2½-inch diameter brass cap marked:



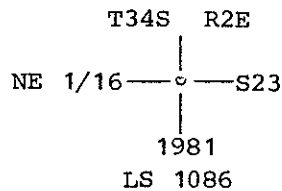
From which the following references:

A 11-inch diameter fir bears S 02° 42' E 21.53 feet distance, scribed CE 1/16 S23 LS 1086 BT.

A 12-inch diameter madrone bears N 79° 47' W 9.88 feet distance, scribed CE 1/16 S23 LS 1086 BT.

Northeast one-sixteenth corner Section 24, Township 34 South, Range 2 East.

At the corner point I set a 2½-inch diameter galvanized iron post with a 2½-inch diameter brass cap marked:



From which the following references:

A 12-inch diameter fir bears N 29° 02' E 10.90 feet distance. Scribed NE 1/16 S23 LS 1086 BT.

A 15-inch diameter fir bears S 54° 21' W 7.60 feet distance. Scribed NE 1/16 S23 LS 1086 BT.

Center-north one-sixteenth corner Section 23, Township 34 South Range 2 East.

At the corner point I found a standard Jackson County Surveyor brass cap monument marked:

JACKSON COUNTY
 T34S R2E
 $\frac{1}{4}$
 S23 | S24
 1976

From which the following references:

A stump bears N 19° 47' E 122.70 feet distance; stump badly burned.

A 17-inch diameter fir bears N 20° 34' E 29.03 feet distance, healed blazes.

A 10-inch diameter fir bears N 29° 30' W 42.37 feet distance, scribe visible.

Corners Established This Survey

South one-sixteenth corner common to Sections 23 and 24, Township 34 South, Range 2 East.

At the corner point I set a 2 1/2-inch diameter galvanized iron post with a 2 1/2-inch diameter brass cap monument marked:

T34S R2E
 S 1/16
 S23 | S24
 1981
 LS1071

From which the following references:

A 6-inch diameter fir bears N 47° 21' W 20.60 feet distance, scribed S1/16 S23 LS 1071 BT.

A 22-inch diameter fir bears S 79° 31' E 39.20 feet distance, scribed S1/16 S24 LS 1071 BT.

West one-sixteenth corner common to Sections 14 and 23, Township 34 South, Range 2 East.

At the corner point I set a 2 1/2-inch diameter galvanized iron post with a 2 1/2-inch diameter brass cap monument marked:

T34S R2E
 W 1/16 $\frac{S14}{S23}$
 1981
 LS 1071

From which the following references:

A 15-inch diameter fir bears N 28° 23' E 8.80 feet distance, scribed W1/16 S14 LS 1071 BT.

A 24-inch diameter fir bears S 77° 59' E 11.80 feet distance, scribed W1/16 S23 LS 1071 BT.

A 23-inch diameter fir bears N 79° 11' E 18.70 feet distance, healed blazes.

A 33-inch diameter fir stump bears S 48° 18' E 13.95 feet distance, healed blaze. Tree cut at 7 feet above ground.

A 10-inch diameter fir bears S 44° 19' W 14.80 feet distance; open face scribe visible.

One-quarter corner common to Sections 14 and 23, Township 34 South, Range 2 East.

At the corner point I found a standard Bureau of Land Management brass cap monument marked:

U.S. Dept. of Interior
Unlawful to Disturb
T34S R2E
 $\frac{1}{4}$ $\frac{S14}{S23}$
1974
Cadastral Surveys
Bureau of Land Management

From which the following references:

A 48-inch diameter fir bears N 43° 24' W 33.67 feet distance, healed blaze.

A 36-inch diameter fir bears S 83° 48' W 47.31 feet distance, healed blaze.

Section corner common to Sections 13, 14, 23 and 24, Township 34 South, Range 2 East.

At the corner point I found a standard Bureau of Land Management brass cap monument marked:

U.S. Dept of Interior
Unlawful to Disturb
T34S R2E
S14 | S13

S23 | S24
1968
Cadastral Surveys
Bureau of Land Management

From which the following references:

A 18-inch diameter fir bears S 38° 05' W 36.18 feet distance, scribe visible.

A 27-inch diameter fir bears N 24° 29' W 43.63 feet distance, scribe visible.

A 15-inch diameter fir bears N 23° 05' E 41.09 feet distance, healed blaze.

A 21-inch diameter fir bears S 89° 23' E 42.26 feet distance, healed blaze.

One-quarter corner common to Sections 23 and 24, Township 34 South, Range 2 East.

From which the following references:

A 60-inch diameter cedar bears N 14° 34' W 27.22 feet distance, healed blaze.

A 20-inch diameter fir bears N 58° 07' E 37.84 feet distance, healed blaze.

A 33-inch diameter fir bears S 44° 29' E 62.52 feet distance, healed blaze.

A 8-inch diameter fir bears S 46° 11' W 28.95 feet distance, healed blaze.

A 30-inch diameter fir bears S 64° 54' W 50.06 feet distance, healed blaze.

One-quarter corner common to Sections 22 and 23, Township 34 South, Range 2 East.

At the corner point I found a standard Bureau of Land Management brass cap monument marked:

U.S. Dept. of Interior
Unlawful to Disturb
T34S R2E
S22 | S23
1968
Cadastral Surveys
Bureau of Land Management

From which the following references:

A 10-inch diameter fir bears N 11° 54' W 20.50 feet distance, healed blaze.

A 13-inch diameter fir bears N 89° 44' E 67.67 feet distance, healed blaze.

A 14-inch diameter fir bears S 56° 20' W 12.30 feet distance. This tree is dead and the remains are a 5 foot high stump with scribe visible.

Section Corner common to Sections 14, 15, 22 and 23, Township 34 South, Range 2 East.

At the corner point I found a standard Bureau of Land management brass cap monument marked:

U.S. Dept of Interior
Unlawful to Disturb
T34S R2E
S15 | S14

S22 | S23
1974
Cadastral Surveys
Bureau of Land Management

From which the following references:

A 27-inch diameter fir bears N 11° 33' W 7.50 feet distance, healed blaze.

U.S. Dept. of Interior
 Unlawful to Disturb
 T34S R2E
 S23 | S24
 ————
 S26 | S25
 1963
 Cadastral Survey
 Bureau of Land Management

From which the following references:

A 12-inch diameter fir bears N 25° 27' W 33.80 feet distance, healed blaze.

A 38-inch diameter fir bears N 29° 32' E 28.60 feet distance, healed blaze.

A 21-inch diameter fir bears S 20° 35' E 64.60 feet distance, healed blaze.

A 74-inch diameter pine bears S 23° 32' W 89.82 feet distance, open face with scribe marks visible.

A 1 1/2-inch diameter iron post monument with marks S24, S25, S23, S26 MEDCO positioned alongside BLM monument.

One-quarter corner common to Sections 23 and 26, Township 34 South, Range 2 East.

At the corner point I found a standard Bureau of Land Management brass cap monument marked:

U. S. Dept. Of Interior
 Unlawful to Disturb
 T34S R2E
 1/4 $\frac{S23}{S26}$
 1974
 Cadastral Surveys
 Bureau of Land Management

From which the following references:

A 30-inch diameter fir bears N 43° 21' W 43.60 feet distance, healed blaze.

A 29-inch diameter fir bears S 69° 23' E 31.50 feet distance. Scribe visible.

Section corner common to Sections 22, 23, 26 and 27, Township 34 South, Range 2 East.

At the corner point I found a standard Bureau of Land Management brass cap monument marked:

U.S. Dept. of Interior
 Unlawful to Disturb
 T34S R2E
 S22 | S23
 ————
 S27 | S26
 1968
 Cadastral Surveys
 Bureau of Land Management

SURVEY NARRATIVE TO COMPLY WITH
PARAGRAPH 209.250 OREGON REVISED STATUTES

SURVEY FOR: Rogue River National Forest
P.O. Box 520
Medford, Oregon 97501

And

Medford Resources Corporation
P.O. Box 550
Medford, Oregon 97501

LOCATION: Section 23, Township 34 South, Range 2 East,
Willamette Meridian, Jackson County, Oregon

BASIS OF BEARING: Solar observation

PURPOSE: To monument National Forest and Medford Resources
Corporation lands within Section 23.

PROCEDURE: Prior to commencement of this survey an investiga-
tion of required corner control was made. All
controlling corners had been remonumented by either
the Bureau of Land Management, Cadastral Surveys
Division or the Jackson County Surveyor. With the
required corner control identified, a random line
traverse was ran around the perimeter of Section 23
tying controlling corners to a closed traverse.
From this information, positions for the South one-
sixteenth corner on the east line and the west one-
sixteenth corner on the north line were computed
and established. From the established one-
sixteenth corners a traverse was ran along interior
lines closing to the perimeter traverse; from this
information monuments were established and lines
posted as shown on the attached map of survey.

This survey was performed utilizing Wild T-16 and
T-2 Theodolites and Hewlett-Packard 3805 electronic
distance meters.

Lines separating National Forest lands and other
ownership were posted with carsonite boundary
marker posts with National Forest boundary signs
attached. Trees along the true line were blazed
and painted with red timber marking paint.

Lines separating Medford Resource Corporation Lands
were posted with Medford Resource Corporation bound-
ary Signs. Trees along the true line were blazed
and painted with white timber marking paint.

Corners Accepted for Control

Section corner common to Sections 23, 24, 25 and 26, Township 34 South,
Range 2 East.

At the corner point I found a standard Bureau of Land Management brass cap
monument marked: