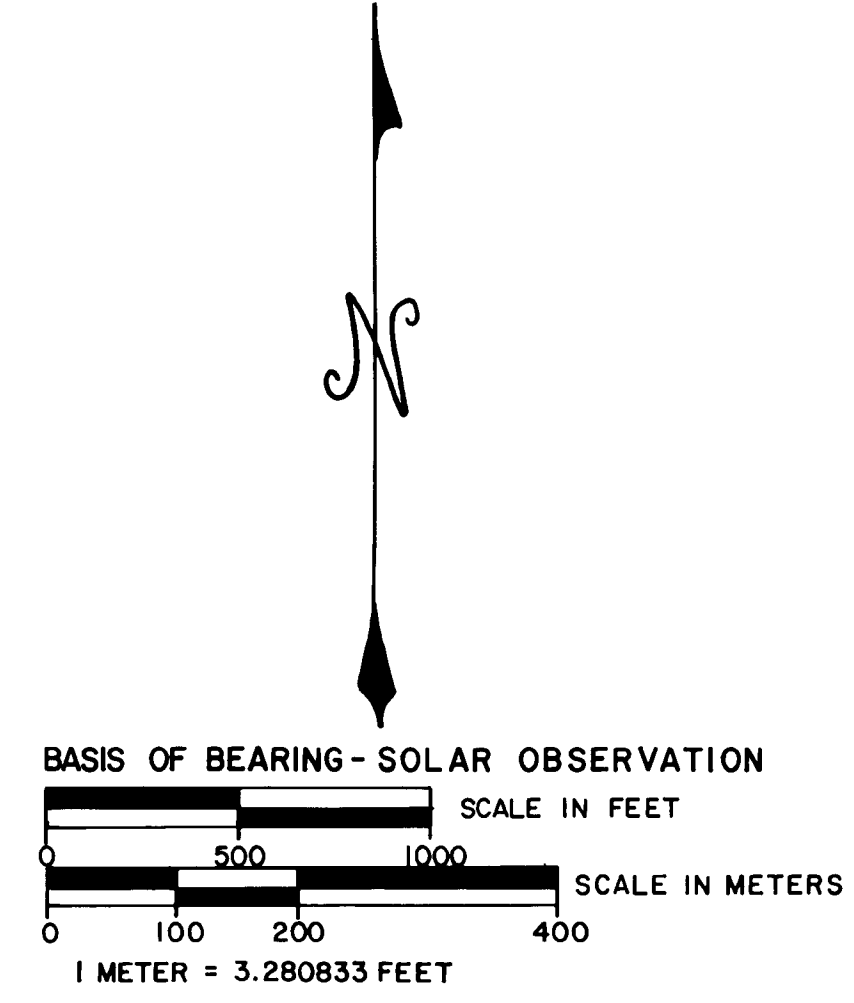
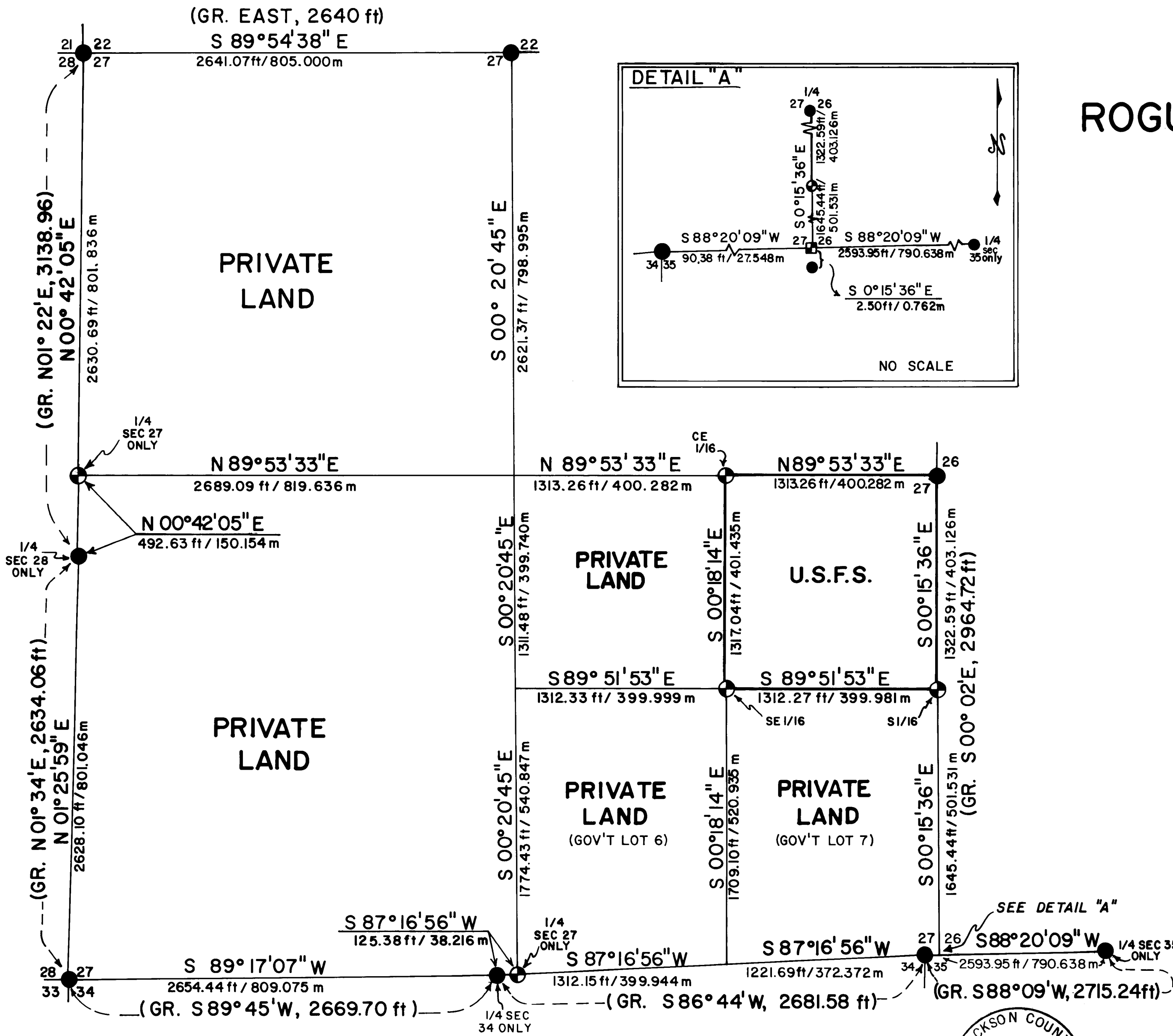
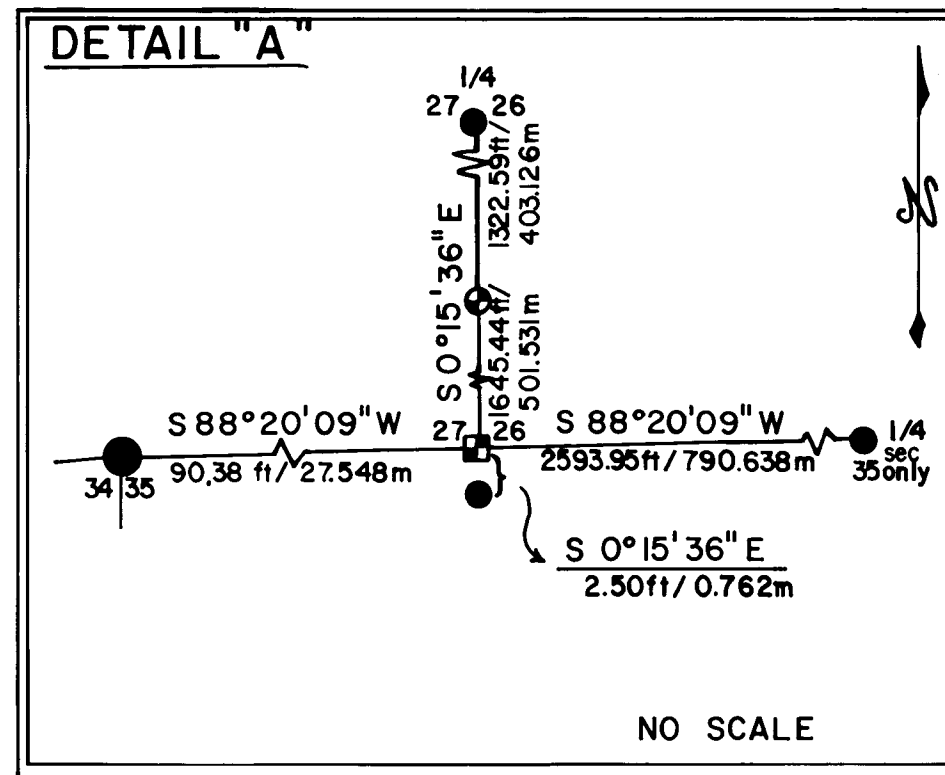


MAP OF SURVEY
FOR
ROGUE RIVER NATIONAL FOREST
P.O. BOX 520
MEDFORD, OREGON
MARCH 16, 1981



HISTORY OF SURVEYS

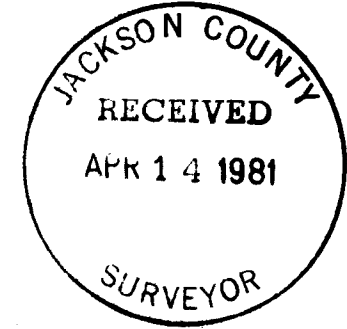
A FRACTIONAL PORTION OF THE TOWNSHIP, INCLUDING THE EAST LINE OF SECTION 28 AND THE NORTH LINE OF SECTION 34, WAS ORIGINALLY SURVEYED BY NATHANIEL FORD UNDER CONTRACT NO. 58 DATED APRIL 18, 1855. THE REMAINDER OF THE TOWNSHIP, INCLUDING A RETRACEMENT OF THE ABOVE-MENTIONED LINES, WAS SURVEYED BY EUGENE B. HENRY UNDER CONTRACT NO. 774 DATED JANUARY 30, 1908. ORIGINAL CORNERS ESTABLISHED BY FORD AND REMONUMENTED BY HENRY, AS WELL AS ORIGINAL CORNERS ESTABLISHED BY HENRY, WERE REMONUMENTED BY THE BUREAU OF LAND MANAGEMENT IN 1966, 1968, AND 1974, AND ARE MORE PARTICULARLY DESCRIBED IN THE ATTACHED SURVEY NARRATIVE. NO OTHER SURVEYS OF RECORD.

LEGEND

- FOUND STANDARD BLM OR COUNTY SURVEYOR MONUMENT
- ⊕ SET 2 1/2" DIA. X 30" LG IRON POST WITH 2 1/2" DIA. BRASS CAP UNLESS OTHERWISE NOTED.
- ⊞ SET 5/8" DIA. IRON PIN WITH 1/4" DIA. ALUMINUM CAP
- GR. GOVERNMENT RECORD
- PROPERTY LINE ESTABLISHED AND POSTED THIS SURVEY
- - - SECTION LINE CALCULATED FROM TRAVERSE SURVEY

CERTIFICATE OF SURVEY

I, HAROLD L. CENTER, REGISTRATION NO 1071, REGISTERED PROFESSIONAL LAND SURVEYOR, STATE OF OREGON, HEREBY CERTIFY THAT THIS MAP CORRECTLY REPRESENTS A SURVEY MADE BY ME OR UNDER MY DIRECTION, IN CONFORMANCE WITH THE LAWS OF THE STATE OF OREGON, AT THE REQUEST OF THE U.S. FOREST SERVICE.



U.S. DEPARTMENT OF AGRICULTURE FOREST SERVICE REGION 6 ROGUE RIVER NAT'L FOREST	
DEPENDENT RESURVEY and SECTION SUBDIVISION SEC 27, T.34S., R.2E., WM. JACKSON COUNTY, OREGON	
REVIEWED BY <i>D.L. Small</i>	DATE <i>2 April 1981</i>
REVIEWED BY <i>R.J. Hathaway</i>	DATE <i>4/9/81</i>

A fir 15-inches in diameter bears N 50° 53' E, 18.3 feet distance.
Scribed "SE 1/16 S27 LS 1071 BT".

South sixteenth corner common to Sections 26 and 27, Township 34 South,
Range 2 East.

At the corner point I set a 2 1/2-inch diameter galvanized iron post with a
2 1/2-inch diameter brass cap marked:

T34S R2E
S 1/16
S27 | S26
1981
LS 1071

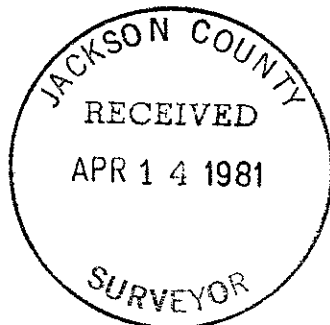
From which the following references:

A cedar 19-inches in diameter bears N 50° 16' W, 33.9 feet distance.
Scribed "S 1/16 S27 LS 1071 BT".

A fir 13-inches in diameter bears N 16° 59' E, 42.2 feet distance.
Scribed "S 1/16 S26 LS 1071 BT".

March 16, 1981

HAROLD L. CENTER
Registered Professional Land Surveyor
Oregon Certificate No. 1071

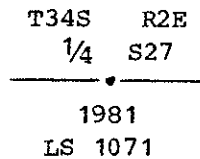


A fir 10-inches in diameter bears S 20° 48' E, 19.0 feet distance.
 Scribed "1/4 S27 LS 1071 BT".

A fir 13-inches in diameter bears N 62° 52' W, 6.2 feet distance.
 Scribed "X BT".

South one-quarter corner for Section 27, Township 34 South, Range 2 East.

At the corner point I set a 2 1/2-inch diameter galvanized iron post with a 2 1/2-inch diameter brass cap marked:



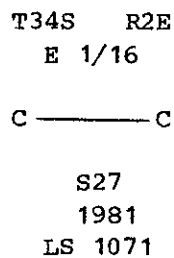
From which the following references:

A fir 16-inches in diameter bears N 47° 07' E, 14.7 feet distance.
 Scribed "1/4 S27 LS 1071 BT".

A fir 15-inches in diameter bears N 59° 14' W, 39.1 feet distance.
 Scribed "X LS 1071 BT".

Center-east one-sixteenth corner of Section 27, Township 34 South, Range 2 East.

At the corner point I set a 2 1/2-inch diameter galvanized iron post with a 2 1/2-inch diameter brass cap marked:



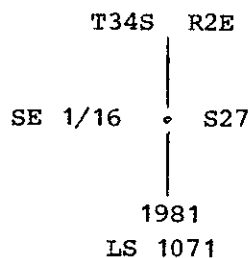
From which the following references:

A cedar 12-inches in diameter bears S 58° 41' E, 62.6 feet distance.
 Scribed "CE 1/16 S27 LS 1071 BT".

A yew 14-inches in diameter bears S 29° 25' E, 99.1 feet distance.
 Scribed "CE 1/16 S27 LS 1071 BT".

Southeast one-sixteenth corner of Section 27, Township 34 South, Range 2 East.

At the corner point I set a 2 1/2-inch diameter galvanized iron post with a 2 1/2-inch diameter brass cap marked:



From which the following references:

A cedar 35-inches in diameter bears N 13° 02' E, 52.7 feet distance.
 Scribed "SE 1/16 S27 LS 1071 BT".

At the corner point I found a standard Bureau of Land Management brass cap monument marked:

U. S. Dept. of Interior
 Unlawful to Disturb

 1/4 _____

 S35
 T34S R2E
 1968
 Cadastral Surveys
 Bureau of Land Management

From which the following references:

A pine 32-inches in diameter bears S 08° 23' E, 47.0 feet distance with a single open blaze. "1/4 S35 B" scribe marks visible.

A cedar with a broken top, 8-inches in diameter bears S 43° 54' W, 22.8 feet distance with a single open blaze. "1/4 S35 BT" scribe marks visible.

A fir 42-inches in diameter bears N 22° 20' W, 36.3 feet distance with a healed blaze.

New Reference:

A fir 14-inches in diameter bears S 74° 14' E, 39.1 feet distance. Scribed "1/4 S35 LS 1071 BT".

Corners Established This Survey

Closing section corner common to Sections 26 and 27, Township 34 South, Range 2 East.

At the corner point I set a 5/8-inch diameter by 30-inches long iron pin flush with the ground, with a 1 1/4-inch diameter aluminum cap marked "LS 1071". References established for the original closing corner were utilized as references for this corner. I mark no new references. Existing references are tied as follows:

A fir 19-inches in diameter bears N 44° 26' W, 49.2 feet distance with a healed blaze.

A fir 42-inches in diameter bears N 77° 30' E, 73.2 feet distance with a partially healed blaze. "S26" scribe marks visible.

The original closing corner for Sections 26 and 27, bears S 00° 15' 36" E, 2.5 feet distance.

West one-quarter corner for Section 27, Township 34 South, Range 2 East.

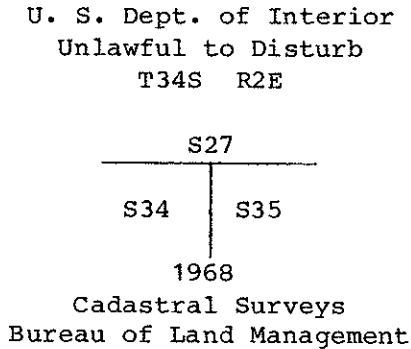
At the corner point I set a 2 1/2-inch diameter galvanized iron post with a 2 1/2-inch diameter brass cap marked:

T34S R2E
 | 1/4
 |
 • S27
 |
 1981
 LS 1071

From which the following references:

A cedar 10-inches in diameter bears N 66° 37' E, 39.0 feet distance. Scribed "1/4 S27 LS 1071 BT".

At the corner point I found a standard Bureau of Land Management brass cap monument marked:

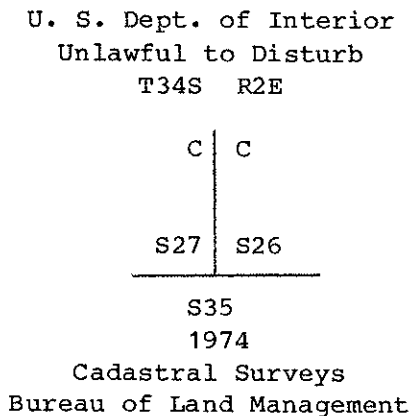


From which the following references:

- A fir stump 60-inches in diameter bears N 45° 00' W, 17.3 feet distance with a healed blaze.
- A fir 55-inches in diameter bears S 46° 29' E, 34.1 feet distance with a healed blaze.
- A fir 13-inches in diameter bears S 08° 24' W, 21.5 feet distance with a partially healed blaze. "S 34 BT" scribe marks visible.
- A fir 26-inches in diameter bears S 46° 46' W, 8.3 feet distance with a healed blaze.

Closing section corner common to Sections 26 and 27, Township 34 South, Range 2 East.

At the corner point I found a standard Bureau of Land Management brass cap monument marked:



This monument serves as control for alignment for the south half of the east line Section 27.

From which the following references:

- A root hole bears N 71° 49' W, 34.8 feet distance. A dead and down fir is alongside the root hole; no scribe marks visible.
- A fir 19-inches in diameter bears N 42° 29' W, 51.0 feet distance with a healed blaze.
- A fir 42-inches in diameter bears N 75° 17' E, 73.2 feet distance with a partially healed blaze. "S 26" scribe marks visible.
- A 5/8-inch diameter iron pin with 1/4-inch diameter aluminum cap marked "LS 1071" bears N 00° 15' 36" W, 2.5 feet distance. (See Corners Established This Survey for further information.)

One-quarter corner for Section 35, Township 34 South, Range 2 East.

A fir 39-inches in diameter bears S 79° 35' W, 28.3 feet distance with a healed blaze.

Section corner common to Sections 27, 28, 33 and 34, Township 34 South, Range 2 East.

At the corner point I found a standard Bureau of Land Management brass cap monument marked:

U. S. Dept. of Interior
Unlawful to Disturb
T34S R2E

S28		S27
<hr/>		
S33		S34

1968
Cadastral Surveys
Bureau of Land Management

From which the following references:

A fir 39-inches in diameter bears S 19° 15' E, 13.5 feet distance with a healed blaze.

A fir 15-inches in diameter bears S 25° 25' W, 67.3 feet distance with a healed blaze.

A fir 8-inches in diameter bears N 22° 46' W, 47.9 feet distance with a healed blaze.

A pine 35-inches in diameter bears N 14° 13' E, 16.2 feet distance with a partially healed blaze. Part of "B" scribe marks visible.

One-quarter corner Section 34, Township 34 South, Range 2 East.

At the corner point I found a standard Bureau of Land Management brass cap monument marked:

U. S. Dept. of Interior
Unlawful to Disturb

1/4 S34

T34S R2E

1974
Cadastral Surveys
Bureau of Land Management

From which the following references:

A cedar stump 54-inches in diameter bears S 26° 31' E, 20.0 feet distance with a single blaze; "4 BT" scribe marks visible.

A fir 29-inches in diameter bears S 60° 36' W, 27.7 feet distance with a healed blaze.

New Reference:

A fir 12-inches in diameter bears S 51° 04' E, 68.7 feet distance. Scribed "1/4 S34 LS 1071 BT".

Section corner common to Sections 34 and 35, Township 34 South, Range 2 East.

From which the following references:

A fir snag 16-inches in diameter bears N 32° 25' E, 9.3 feet distance with an open face. "4 S2" scribe marks visible.

A pine stump 15-inches in diameter bears S 05° 24' E, 30.8 feet distance. No scribe marks visible.

A fir 30-inches in diameter bears S 76° 02' W, 40.0 feet distance with a healed blaze.

A fir 27-inches in diameter bears N 01° 56' W, 40.6 feet distance with a healed blaze.

One-quarter corner Section 28, Township 34 South, Range 2 East.

At the corner point I found a standard Bureau of Land Management brass cap monument marked:

U. S. Dept. of Interior
Unlawful to Disturb
T34S
R2E
1/4 S28
1968
Cadastral Surveys
Bureau of Land Management

From which the following references:

A fir 26-inches in diameter bears S 71° 21' W, 11.9 feet distance with a healed blaze.

An oak 16-inches in diameter bears S 82° 14' W, 26.8 feet distance with a healed blaze.

A fir 9-inches in diameter bears N 40° 44' W, 35.6 feet distance with a healed blaze.

A pine stump 35-inches in diameter bears N 28° 41' E, 23.9 feet distance.

One-quarter corner common to Sections 26 and 27, Township 34 South, Range 2 East.

At the corner point I found a standard Bureau of Land Management brass cap monument marked:

U. S. Dept. of Interior
Unlawful to Disturb
T34S R2E
1/4
S27 | S26
1968
Cadastral Surveys
Bureau of Land Management

From which the following references:

A fir 21-inches in diameter bears N 65° 20' E, 13.2 feet distance with a healed blaze.

I then proceeded to subdivide Section 27 and established interior corners as shown on the attached map of survey.

True lines were posted with carsonite polymer posts with National Forest boundary signs attached. Trees along the true line were blazed and painted with red timber marking paint.

EQUIPMENT USED: This survey was performed utilizing a Wild T-2 Theodolite and a Hewlett-Packard 3808 Electronic Distance Meter.

Corners Accepted For Control

Section corner common to Sections 21, 22, 27 and 28, Township 34 South, Range 2 East.

At the corner point I found a standard Bureau of Land Management brass cap monument marked:

U. S. Dept. of Interior
 Unlawful to Disturb
 T34S R2E

S21	S22
S28	S27

1966
 Cadastral Surveys
 Bureau of Land Management

From which the following references:

A cedar 11-inches in diameter bears S 39° 57' W, 25.6 feet distance with a partially healed blaze. "R4" scribe marks visible.

A broken off fir, diameter indeterminate, bears N 51° 50' W, 32.8 feet distance.

A fir 11-inches in diameter bears N 20° 01' W, 44.3 feet distance with a healed blaze.

A cedar 27-inches in diameter bears N 16° 01' E, 40.8 feet distance with a burnt and decayed face.

A fir 16-inches in diameter bears N 49° 56' E, 50.7 feet distance with a healed blaze.

A cedar 7-inches in diameter bears S 73° 39' E, 7.5 feet distance with a healed blaze.

A fir stump 29-inches in diameter bears S 21° 42' E, 22.9 feet distance with a burnt face. No scribe marks visible.

One-quarter corner common to Sections 22 and 27, Township 34 South, Range 2 East.

At the corner point I found a standard Bureau of Land Management brass cap monument marked:

U. S. Dept. of Interior
 Unlawful to Disturb
 T34S R2E

1/4	S22
	S27

1968
 Cadastral Surveys
 Bureau of Land Management

SURVEY NARRATIVE TO COMPLY WITH
PARAGRAPH 209.250 OREGON REVISED STATUTES

SURVEY FOR: Rogue River National Forest
P. O. Box 520
Medford, Oregon 97501

LOCATION: Section 27, Township 34 South, Range 2 East,
Willamette Meridian, Jackson County, Oregon.

BASIS OF BEARING: Solar Observation

PURPOSE: To establish corners and mark and post National
Forest boundaries within Section 27.

PROCEDURE: Prior to commencing this survey, a study of the
original survey was made. A fractional part of
this township, including the west and south lines
of Section 27, was originally surveyed by Nathaniel
Ford under Contract No. 58, dated April 18, 1855.
The one-quarter corners on the lines common to
Sections 27 and 28, and to Sections 27 and 34, were
originally established as corners of maximum
control. The remainder of the township was sur-
veyed by Eugene B. Henry under Contract No. 774,
dated January 30, 1908. Henry retraced the above
mentioned lines and found them to be out of limits
in both alignment and measurement. He then
established a sectional correction line from the
corner common to Sections 21, 22, 27 and 28, east
to the intersection with the east boundary of the
township. After running the sectional correction
line, Henry then ran south between Sections 26 and
27, establishing a closing corner 140 links east of
the corner for Sections 26, 27, 34 and 35.

I then investigated all controlling corners and
found that all corners had been recovered and remo-
numented by the BLM. Based on Henry's 1908 retra-
cement, the original one-quarter corners on the
west and south lines of Section 27, as established
by Ford, were remonumented as corners of minimum
control by the BLM in 1968 and 1974, respectively.

With the required controlling corners verified, I
established a closed traverse around the perimeter
of Section 27, tying in all corners including the
north one-quarter corner Section 35. From this
information, I find Henry's 1908 closing corner,
remonumented by the BLM in 1974, to be situated 2.5
feet off line. I monumented the true position of
the closing corner as described later in this
narrative.

I then calculated proportion positions for the west
and south one-quarter corners for Section 27 only.
The west one-quarter corner was established at 40
chains proportionate measure in latitude south from
the corner common to Sections 21, 22, 27 and 28,
and on line between the senior (1855) corners. The
south one-quarter was established at 40 chains pro-
portionate measure in departure west from the new
closing corner position, and on line between the
senior (1855) corners.