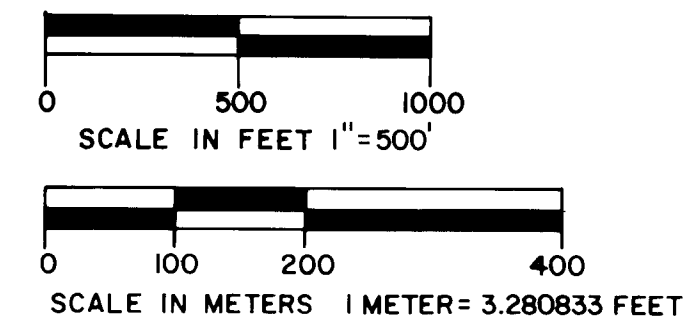
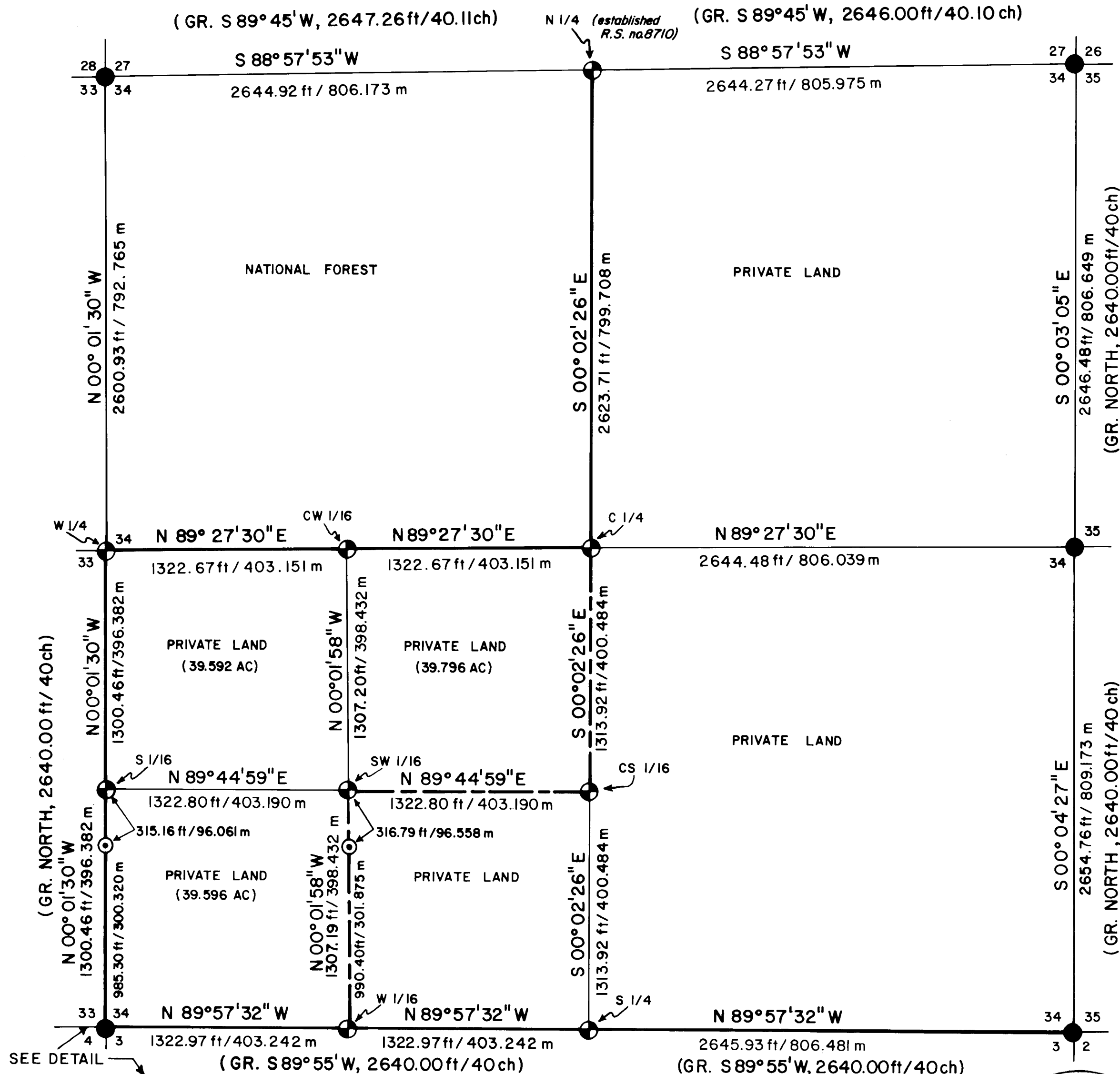
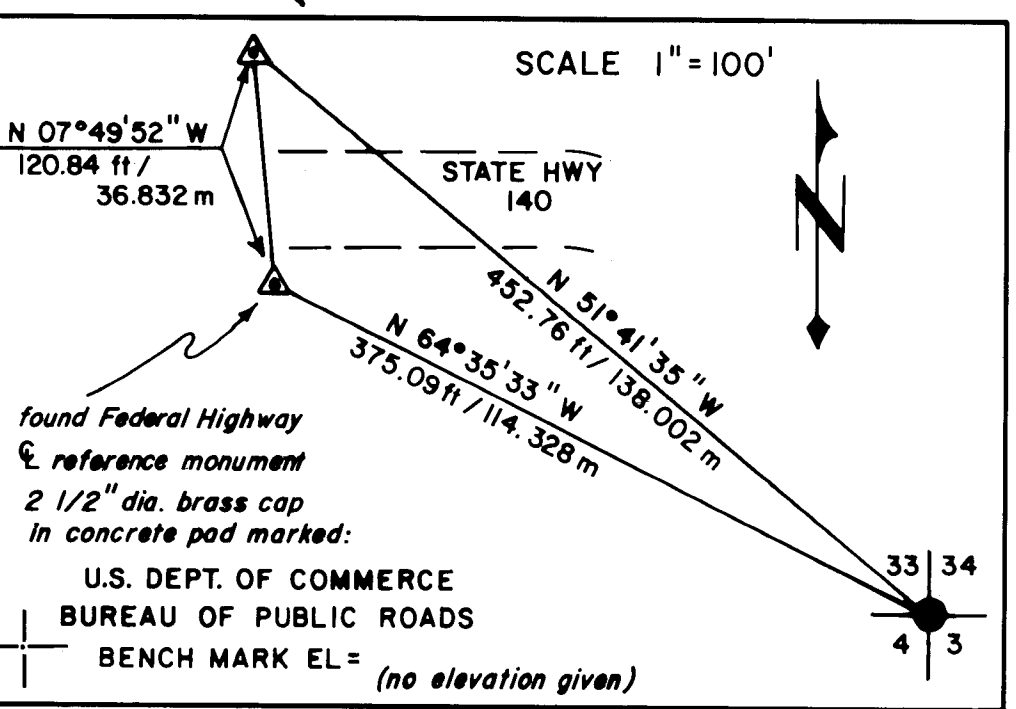


MAP OF SURVEY
FOR
ROGUE RIVER NATIONAL FOREST
P.O. BOX 520
MEDFORD, OREGON
and
JACK and MARION J. STEVES
24001 HIGHWAY 140
EAGLE POINT, OREGON
APRIL 1, 1981

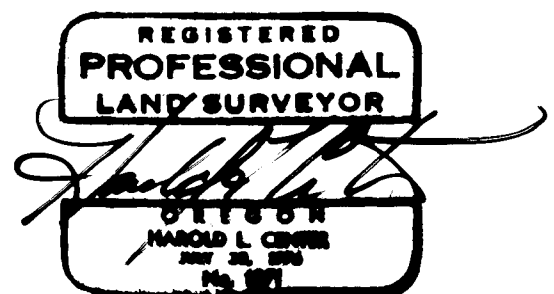
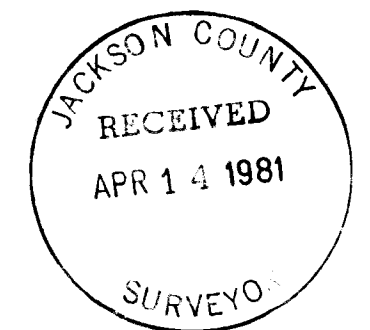


HISTORY OF SURVEYS

THE SOUTH BOUNDARY OF SECTION 34 WAS ESTABLISHED BY WILLIAM M. TURNER UNDER CONTRACT NO. 455, DATED JULY 17, 1882 (TURNER WAS ENGAGED IN SURVEY OF TOWNSHIP 37 SOUTH RANGE 3 EAST)
THE EAST, WEST AND NORTH LINES OF SECTION 34 WERE ESTABLISHED BY RUFUS S. MOORE UNDER CONTRACT NO. 475, DATED JULY 3, 1883.
CENTERLINE REFERENCE MONUMENTS FOR STATE HIGHWAY NO. 140 WERE RECOVERED.
NO OTHER SURVEYS OF RECORD.



- LEGEND**
- FOUND STANDARD BLM OR COUNTY SURVEYOR MONUMENT
 - ⊕ SET 2 1/2" DIA X 30" LG IRON POST WITH 2 1/2" DIA BRASS CAP, UNLESS OTHERWISE NOTED
 - ⊙ SET LINE MONUMENT 5/8" DIA X 24" LG IRON PIN
 - GR GOVERNMENT RECORD
 - DENOTES LINE POSTED TO NAT'L FOREST STANDARDS THIS SURVEY
 - - - SET 'T' ANGLE FENCE POSTS ALONG THIS LINE - NO BLAZING
 - SECTION LINE CALCULATED FROM TRAVERSE SURVEY



CERTIFICATE OF SURVEY

I, HAROLD CENTER, REGISTRATION NO. 1071, REGISTERED PROFESSIONAL LAND SURVEYOR, STATE OF OREGON, HEREBY CERTIFY THAT THIS MAP CORRECTLY REPRESENTS A SURVEY MADE BY ME OR UNDER MY DIRECTION IN CONFORMANCE WITH THE LAWS OF THE STATE OF OREGON, AT THE REQUEST OF THE U.S. FOREST SERVICE.

U.S. DEPT. OF AGRICULTURE FOREST SERVICE REGION 6 ROGUE RIVER NAT'L FOREST	
DEPENDENT RESURVEY and SECTION SUBDIVISION SEC. 34, T. 36 S. R. 3 E, W.M. JACKSON COUNTY, OREGON	
REVIEWED BY <i>D. J. Small</i>	DATE <i>Ed April 1981</i>
REVIEWED BY <i>R. J. Hathaway</i>	DATE <i>4/9/81</i>

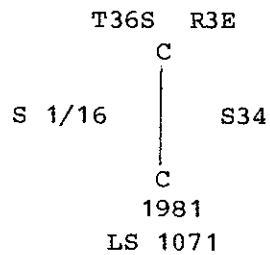
From which the following references:

A 25-inch diameter fir bears N 75° 20' W 34.60 feet distance. Scribed CW 1/16 S34 LS 1071 BT.

A 22-inch diameter cedar bears N 44° 44' E 39.96 feet distance. Scribed CW 1/16 S34 LS 1071 BT.

Center-South one-sixteenth corner Section 34, Township 36 South, Range 3 East.

At the corner point I set a 2 1/2-inch diameter galvanized iron post with a 2 1/2-inch diameter brass cap marked:



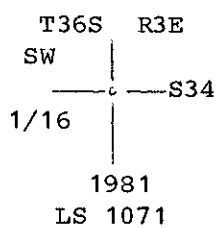
From which the following references:

A P-K nail in a large basalt rock bears N 63° 19' E 10.70 feet distance.

A 20-inch diameter cedar bears N 62° 34' W 33.20 feet distance. Scribed CS 1/16 S34 LS 1071 BT.

Southwest one-sixteenth corner Section 34, Township 36 South, Range 3 East.

At the corner point I set a 2 1/2-inch diameter galvanized iron post with a 2 1/2-inch diameter brass cap marked:



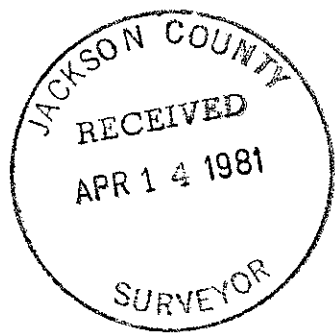
From which the following references:

A 14-inch diameter cedar bears S 48° 18' E 53.50 feet distance. Scribed SW 1/16 S34 LS 1071 BT.

A 13-inch diameter pine bears S 77° 52' W 91.50 feet distance. Scribed SW 1/16 S34 LS 1071 BT.

April 1, 1981

HAROLD L. CENTER
Registered Professional Land Surveyor
Oregon Certificate No. 1071



From which the following references:

A 16-inch diameter fir bears N 76° 16' W 22.50 feet distance. Scribed S 1/16 S33 LS 1071 BT.

A 11-inch diameter fir bears N 47° 18' E 16.10 feet distance. Scribed S 1/16 S34 LS 1071 BT.

West one-sixteenth corner Section 34, Township 36 South, Range 3 East, and Section 3, Township 37 South, Range 3 East.

At the corner point I set a 2 1/2-inch diameter galvanized iron post with a 2 1/2-inch diameter brass cap marked:

T36S R3E
 W 1/16 $\frac{S34}{S3}$
 T37S
 1981
 LS 1071

From which the following references:

A 6-inch diameter cedar bears N 83° 55' E 119.14 feet distance. Scribed X BT.

A 7-inch diameter cedar bears S 10° 22' E 50.15 feet distance. Scribed W 1/16 S3 LS 1071 BT.

A finishing nail in guardrail support bears N 06° 19' W 24.80 feet distance.

Center one-quarter corner Section 34, Township 36 South, Range 3 East.

At the corner point I set a 2 1/2-inch diameter galvanized iron post with a 2 1/2-inch diameter brass cap marked:

T36S R3E
 C 1/4 ——— S34
 1981
 LS 1071

From which the following references:

A 15-inch diameter fir bears N 54° 59' W 70.35 feet distance. Scribed C 1/4 S34 LS 1071 BT.

A 16-inch diameter fir bears S 23° 16' E 21.50 feet distance. Scribed C 1/4 S34 LS 1071 BT.

Center-West one-sixteenth corner Section 34, Township 36 South, Range 3 East.

At the corner point I set a 2 1/2-inch diameter galvanized iron post with a 2 1/2-inch diameter brass cap marked:

T36S R3E
 W 1/16
 C ——— C
 S34
 1981
 LS 1071

A 21-inch diameter cedar bears S 23° 32' E 112.90 feet distance with a healed blaze.

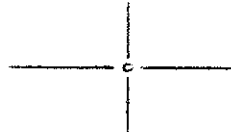
All other references have been destroyed. This corner is situated northeasterly of a residence and easterly of a dirt driveway leading from Highway 140 to the residence. To preserve and protect this monument, I reference this monument as follows: (See Detail 'A' on Record of Survey Plat.)

A 2 1/2-inch diameter brass disk set flush with the ground in a concrete pad bears N 64° 35' 33" W 375.09 feet distance.

A 2 1/2-inch diameter brass disk set flush with the ground in a concrete pad bears N 51° 41' 35" W 452.757 feet distance.

The above described brass disks were established by the Federal Highways as reference to centerline sta P.S. 646+31.15 and are marked as follows:

U. S. Dept. of Commerce
 Bureau of Public Roads

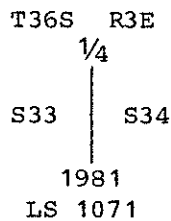


Bench Mark EL. =

Corners Established This Survey

One-quarter corner common to Sections 33 and 34, Township 36 South, Range 3 East.

At the corner point I set a 2 1/2-inch diameter galvanized iron post with a 2 1/2-inch diameter brass cap marked:



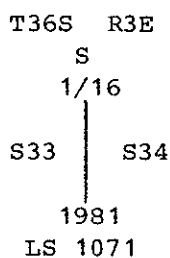
From which the following references:

A 13-inch diameter fir bears S 85° 44' E 10.70 feet distance. Scribed 1/4 S34 LS 1071 BT.

A 14-inch diameter pine bears S 69° 02' W 100.30 feet distance. Scribed 1/4 S33 LS 1071 BT.

South one-sixteenth corner Sections 33 and 34, Township 36 South, Range 3 East.

At the corner point I set a 2 1/2-inch diameter galvanized iron post with a 2 1/2-inch diameter brass cap marked:



A 16-inch diameter fir bears S 23° 28' E 9.70 feet distance with scribe visible.

A 15-inch diameter fir bears S 46° 28' W 15.80 feet distance with a healed blaze.

A 34-inch diameter fir bears S 64° 11' W 68.06 feet distance with a healed blaze.

A 18-inch diameter fir bears N 47° 13' W 6.10 feet distance with a healed blaze.

One-quarter corner to Section 34, Township 36 South, Range 3 East, and Section 3, Township 37 South, Range 3 East.

At the corner point I found a 1½-inch diameter galvanized iron pipe established by Marvin C. Ramsey, Registered Professional Land Surveyor No. 404 (Ref. Record Survey No. 1527). I remove this monument and place said pipe inside my monument and at the corner point I set a 2½-inch diameter galvanized iron post with a 2½-inch diameter brass cap marked:

T36S R3E
1/4 $\frac{S34}{S3}$
T37S
1981
LS 1071

From which the following references:

Trees marked by Surveyor Ramsey which I do not open and verify.

A 13-inch diameter fir bears S 75° 40' E 13.40 feet distance with a healed blaze.

A 19-inch diameter fir bears N 62° 24' E 14.30 feet distance with a healed blaze.

New references this survey:

A 18-inch diameter fir bears N 65° 46' W 43.90 feet distance. Scribed 1/4 S34 LS 1071 BT.

A 14-inch diameter fir bears S 86° 45' E 12.00 feet distance. Scribed 1/4 S3 LS 1071 BT.

Section corner common to Sections 33 and 34, Township 36 South, Range 3 East, and Sections 3 and 4, Township 37 South, Range 3 East.

At the corner point I found a standard BLM brass cap monument marked:

U. S. Dept. of Interior
Unlawful to Disturb
T36S R3E
S33 | S34

S4 | S3
T37S
1961
Cadastral Surveys
Bureau of Land Management

From which the following references:

A 19-inch diameter cedar bears N 43° 12' E 65.00 feet distance with a healed blaze.

Corners Accepted For Control

As previously stated, the following corners were described within Record Survey No. 8710 and will not be redescribed.

Section corner common to Sections 26, 27, 34 and 35, Township 36 South, Range 3 East.

Section Corner common to Sections 27, 28, 33 and 34, Township 36 South, Range 3 East.

One-quarter corner common to Sections 27 and 34, Township 36 South, Range 3 East.

The following corners were used as control and are described as follows:

One-quarter corner common to Sections 34 and 35, Township 36 South, Range 3 East.

At the corner point I found a standard BLM brass cap monument marked:

U. S. Dept. of Interior
Unlawful to Disturb
T36S R3E
1/4
S34 | S35
1966
Cadastral Surveys
Bureau of Land Management

From which the following references:

A 12-inch diameter cedar bears N 79° 51' E 9.10 feet distance with scribe visible.

A 22-inch diameter pine bears S 35° 14' E 44.40 feet distance with a healed blaze.

A 11-inch diameter fir bears S 58° 54' W 25.30 feet distance with a healed blaze.

Section corner common to Sections 34 and 35, Township 36 South, Range 3 East and Sections 2 and 3, Township 37 South, Range 3 East.

At the corner point I found a standard BLM brass cap monument marked:

U. S. Dept. of Interior
Unlawful to Disturb
T36S R3E
S34 | S35

S3 | S2
T37S
1971
Cadastral Surveys
Bureau of Land Management

From which the following references:

A 29-inch diameter fir bears N 32° 51' E 32.30 feet distance with open blaze badly axe scarred.

A 10-inch diameter fir bears N 67° 52' E 28.70 feet distance with a healed blaze.

SURVEY NARRATIVE TO COMPLY WITH
PARAGRAPH 209.250 OREGON REVISED STATUTES

SURVEY FOR: Rogue River National Forest
P. O. Box 520
Medford, Oregon 97501

and

Jack and Marian Steves
24001 Highway 140
Eagle Point, Oregon 97524

LOCATION: Section 34, Township 36 South, Range 3 East,
Willamette Meridian, Jackson County, Oregon.

BASIS OF BEARING: Solar observation

PURPOSE: To establish monuments and mark and post mutual
property lines separating National Forest and private
lands.

PROCEDURE: I began this survey with an investigation of the
controlling corners. The Northeast and Northwest
section corners and the North one-quarter corner
were described within Record Survey No. 8710 and
were used as controlling corners for this survey.
Those corners will not be redescribed within this
narrative.

The East one-quarter corner and the Southeast and
Southwest section corners had been remonumented
from original evidence by the Bureau of Land
Management, Cadastral Surveys. The South one-
quarter corner had been reestablished by propor-
tional measurement by Registered Professional Land
Surveyor No. 404, Marvin C. Ramsey.

No evidence of the original West one-quarter corner
had been located prior to this survey.

With the above corner control identified, I per-
formed a series of closed traverses tying the above
corner control. From this data the position of the
South one-quarter corner established by Surveyor
Ramsey was verified and a search area was deter-
mined for the West one-quarter corner. An exten-
sive search for the missing West one-quarter corner
failed to locate any evidence of the original one-
quarter corner. This corner was reestablished by
proportional measurement as shown on the attached
map of survey. A search was performed for original
corner evidence of the South one-quarter corner
without success. In view of this fact, I accept
Surveyor Ramsey's monument.

Property corners were monumented as shown and pro-
perty lines separating National Forest and private
lands were posted utilizing fiberglass boundary
marker posts with National Forest boundary signs
attached. Trees along the true line were blazed
and painted with red timber marking paint.

Work was performed utilizing a Wild T-2 Theodolite
and Hewlett-Packard 3808A Electronic Distance
Meter.