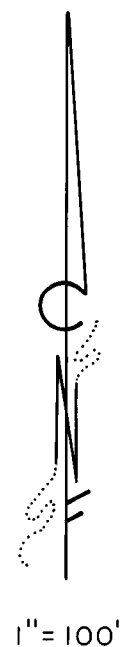
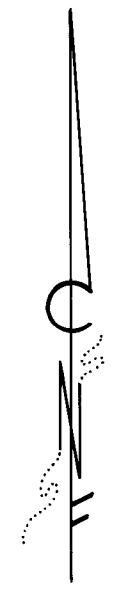
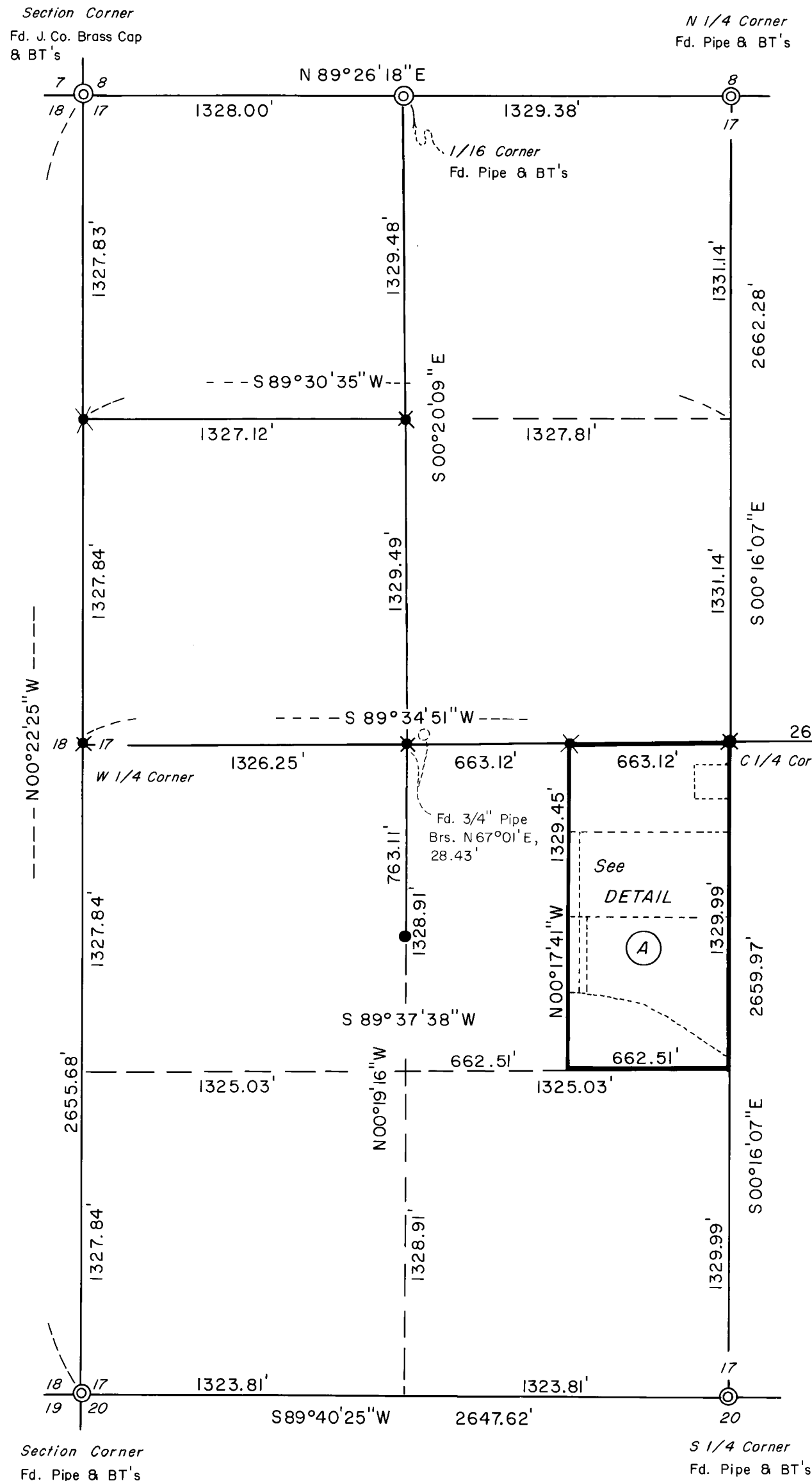


MAP OF SURVEY
 LOCATED IN
 SEC. 17, T.37S., R. 2 W., WM.
 JACKSON COUNTY, OREGON
 FOR

GERTRUDE M. HIGHT
 NEIL SCHEUNEMAN
 DAVE McCOLLUM
 BILL HERMAN
 and
 ROBERT LULL



1" = 500'

1" = 100'

1" = 500'

1" = 500'

1" = 500'

1" = 500'

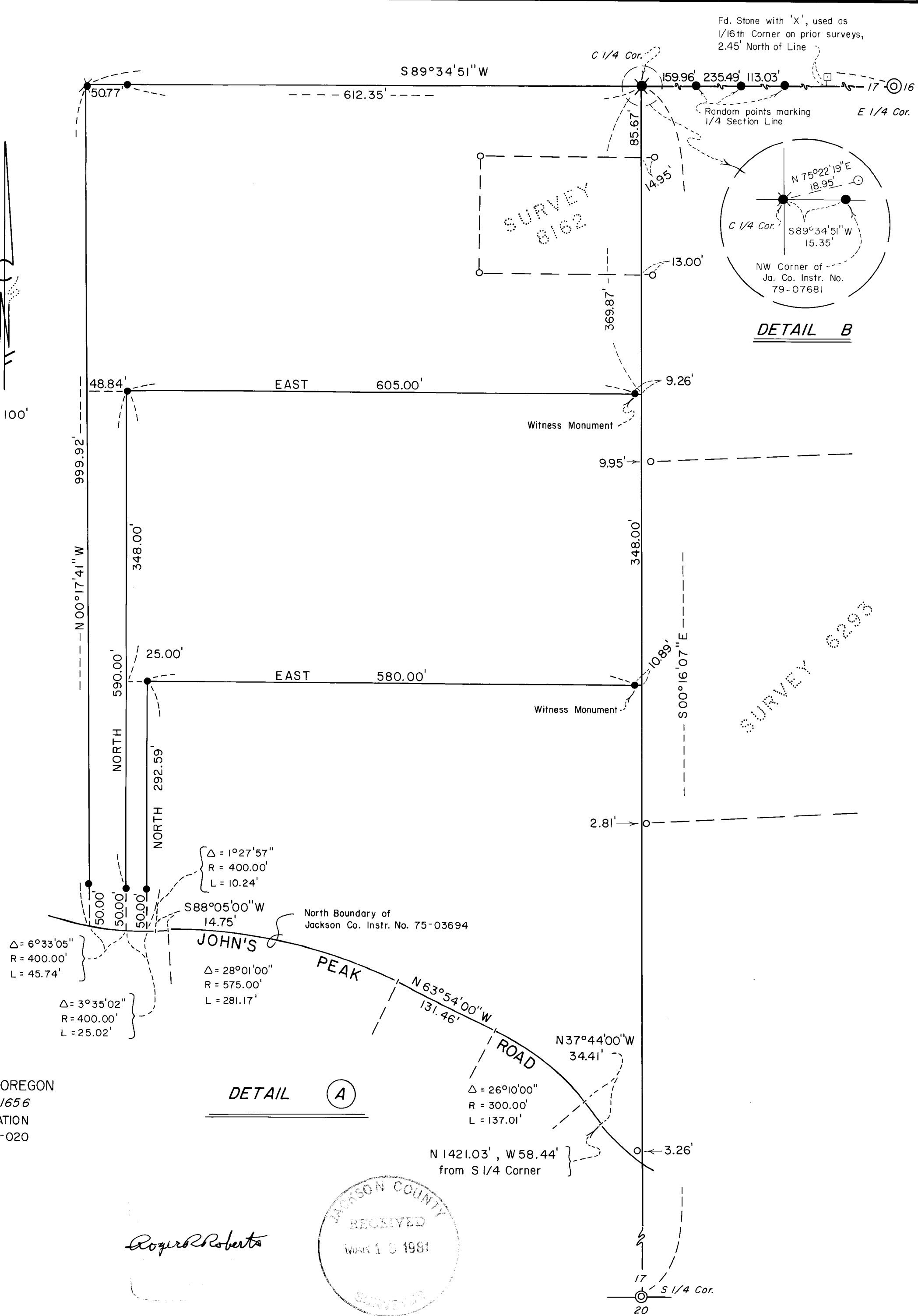
1" = 500'

1" = 500'

1" = 500'

HOFFBUHR SURVEYING, INC. MEDFORD, OREGON
 BY: ROGER R. ROBERTS R.P.L.S. NO. 1656
 BASIS OF BEARING - SOLAR OBSERVATION
 JANUARY 16, 1981 79-020

- = FOUND 5/8" REBAR
- ⊗ = SET 5/8" x 30" REBAR
- = SET 5/8" x 24" REBAR



Fd. Stone with 'X', used as 1/16th Corner on prior surveys, 2.45' North of Line

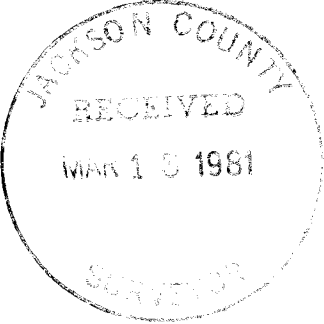
Random points marking 1/4 Section Line

SURVEY 8162

DETAIL B

SURVEY 8293

DETAIL A



Roger Roberts

8750

A 14" fir with a healed blaze on both the East and West sides bears N08°20'E to the lower blaze, 2.70 feet to a nail and shiner at the root crown on the West side.

A 9" fir bears S81°16'E to the lower blaze, 16.71 feet to a nail and shiner at the root crown on the SW side.

At the Northwest one-sixteenth (1/16) corner I set a 5/8" x 30" iron pin and marked the following trees with "1/16" in the upper blaze and "BT" in the lower blaze:

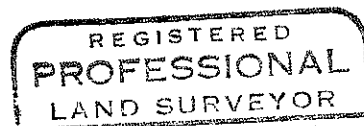
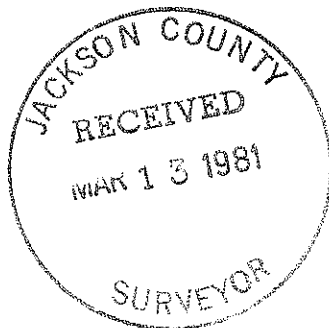
A 7" white pine bears N05°53'E to the lower blaze, 30.56 feet to a nail and shiner at the root crown on the West side.

A 9" black oak, standing in a cluster of seven oaks, bears S68°47'E to the lower blaze, 42.97 feet to a nail and shiner at the root crown on the NE side.

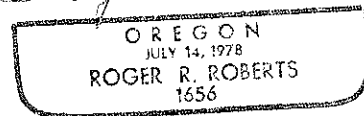
At the Center-East-West 1/64 corner I set a 5/8" x 30" iron pin and double blazed, with no scribing, a 15" ponderosa pine which bears N48°E, 13.6 feet.

Basis of bearing--Solar Observation

March 12, 1981



Roger R. Roberts



Roger R. Roberts
Hoffbuhr Surveying, Inc.
219 North Oakdale
Medford, Oregon 97501

SURVEY NO. 8750

SURVEY NARRATIVE TO COMPLY WITH PARAGRAPH 209.250
OREGON REVISED STATUTES

SURVEY FOR: Gertrude M. Hight
2219 Old Military Road
Medford, Oregon 97501

LOCATION: Section 17, Township 37 South, Range 2 West,
Willamette Meridian, Jackson County, Oregon

PURPOSE: Locate and monument those property lines
indicated on the attached map

PROCEDURE: An electronic distance meter traverse was run to locate both the monumentation found on the exterior boundary of Section 17 and the monumentation found on the interior. No evidence could be found of the original West one-quarter (1/4) corner of the section or of the bearing trees. Therefore, I set a monument at the proportionate mid-point position, as shown on the map.

The section was then subdivided into aliquot parts and those interior corners pertaining directly to the purpose of this survey were monumented.

The parcels shown in Detail A are monumented as described in Jackson County Instrument No. 80-16455. The Southerly boundary along Johns Peak Road was determined according to the description in Jackson County Instrument No. 75-03694.

At the proportionate position of the West one-quarter (1/4) of Section 17, I set a 5/8" x 30" iron pin from which:

A 20" fir with healed blazes on the East and West faces bears S28°13'W 15.5 feet. Opening of the East blaze indicated approximately 22 years growth. A 6" pine with line blazes on the East and West faces bears S06°47'E 12.3 feet.

An 8" oak with multiple healed blazes on several sides bears S63°07'E 33.7 feet.

I marked the following trees with "1/4 S" in the upper blaze and "BT" in the lower blaze:

A 6" pine bears N54°40'W to the lower blaze, 41.84 feet to a nail and shiner at the root crown on the NE side.

A 6" fir bears N39°49'E to the lower blaze, 58.47 feet to a nail and shiner at the root crown on the NW side.

At the center of Section 17 I set a 5/8" x 30" iron pin and marked the following trees with "C 1/4" in the upper blaze and "BT" in the lower blaze:

A 5" oak bears N73°22'W to the lower blaze, 19.19 feet to a nail and shiner 1 foot high on the NE side of the tree.

A 7" oak bears N67°59'40"E to the lower blaze, 55.50 feet to a nail and shiner at the root crown on the SE side.

At the North one-sixteenth (1/16) corner on the section line between Sections 17 and 18, I set a 5/8" x 30" iron pin from which a 20" fir stump sawed off at 5 foot height, with two healed blazes on the South side and one healed blaze on both the West and South sides, bears N32°36'E, 11.0 feet.

I marked the following trees with "1/16" in the upper blaze and "BT" in the lower blaze:

A 6" fir bears S89°20'W to the lower blaze, 28.93 feet to a nail and shiner 1 foot high on the North side.

A 7" fir bears N05°44'E to the lower blaze, 92.67 feet to a nail and shiner 1 foot high on the West side.

At the Center West one-sixteenth (1/16) corner I set a 5/8" x 30" iron pin and marked the following trees with "1/16" in the upper blaze and "BT" in the lower blaze: