

81-04697

GROSS HEIGHTS SUBDIVISION

TO THE CITY OF ASHLAND

Located in NW 1/4 of Sec. 8, Twp. 39S., R. 1 E.W.M., Jackson County, Oregon

POST MONUMENTATION MAP

- ⊙ Monument per original subdivision plat
- Monument per original subdivision plat
- Monument per original subdivision plat
- Monument per original subdivision plat
- ⊗ Set 5/8 x 24 inch Iron Pin tagged RLS 759
- ◇ Set 1 1/2 x 17 1/2 inch Iron Pipe with 3 inch Bronze Disk in Monument Case

I, Everett L. Swain, duly Registered Surveyor of the State of Oregon, do hereby certify that this map represents a survey made by me or under my direction and the monuments conform to O.R.S. 92.060.

Examined and approved this 26th day of February 1981

James H. Olson
City Surveyor

Filed for record this 12th day of March 1981 at 2:21 o'clock P M. and recorded in the Official Records of Jackson County, Oregon.

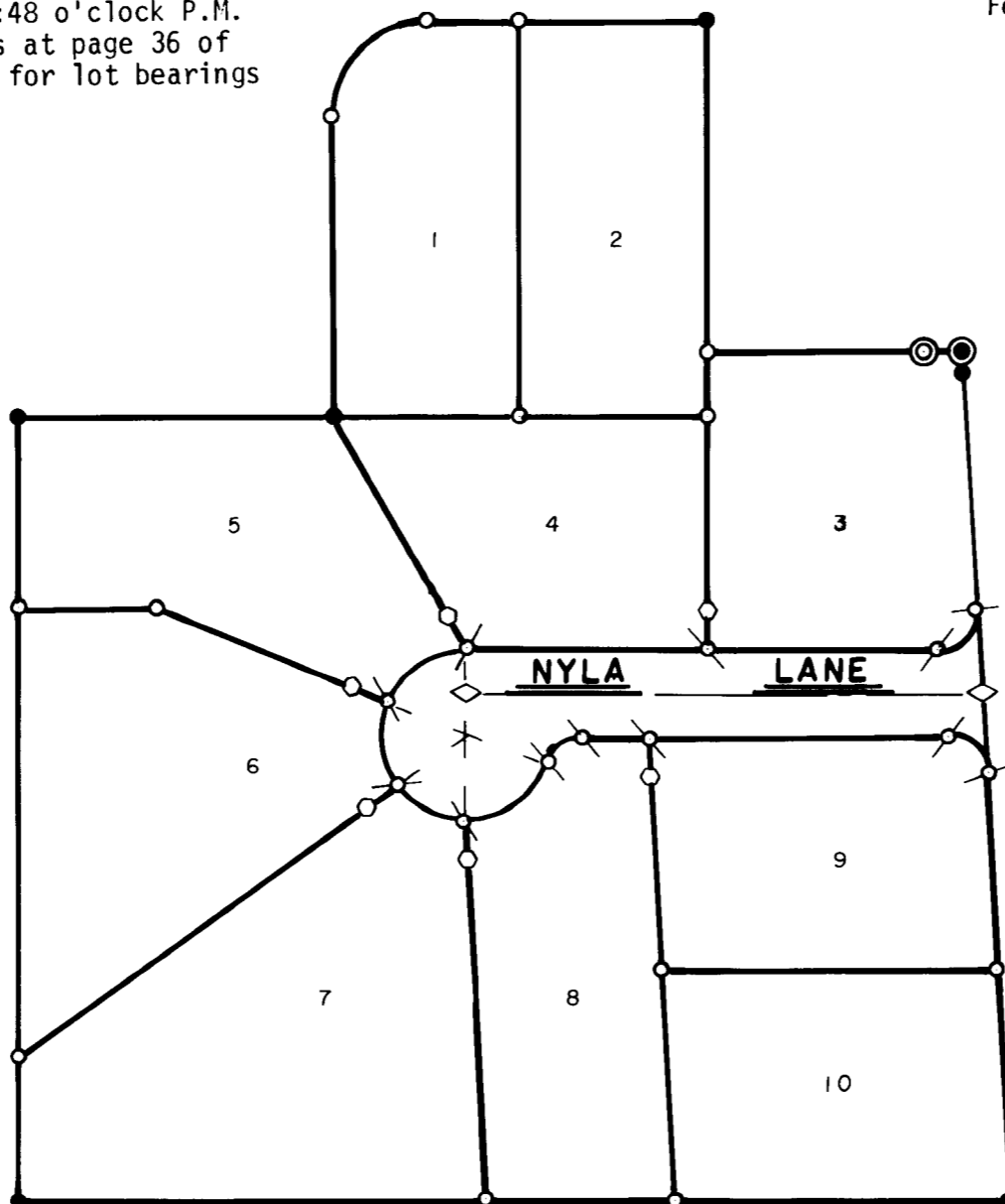
Waldene Terry
County Clerk

Pauline E. McCormack
Deputy

NOTE: See plat of Gross Heights Subdivision filed for record the 27th day of August, 1980 at 4:48 o'clock P.M. and recorded in Volume 14 of plats at page 36 of records of Jackson County, Oregon for lot bearings and distances.

SWAIN SURVEYING, INC.
February 24, 1981

81-04697



Scale: 1"=100'

REGISTERED
PROFESSIONAL
LAND SURVEYOR

Everett L. Swain

OREGON
JULY 8, 1966
EVERETT L. SWAIN
759

JACKSON COUNTY
RECEIVED
MAR 12 1981
SURVEYOR