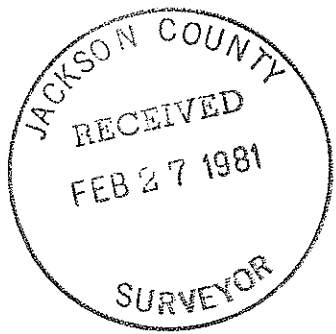


8731



IN SW. 1/4, SEC. 25, T.37S., R2W., WM.
MEDFORD, OREGON
ESTATE : BESSIE F. GARRETT et-al

81-02

BY EDWARD MC GINTY
MEDFORD, OREGON
FEB. 10, 1981

SCALE 1" = 60'
O = 5/8" I. Pin

REGISTERED
PROFESSIONAL
LAND SURVEYOR

Edward A. McGinty
OREGON
JULY 10, 1953
EDWARD A. MCGINTY
301

JEANETTE ST.

FD City Mon.

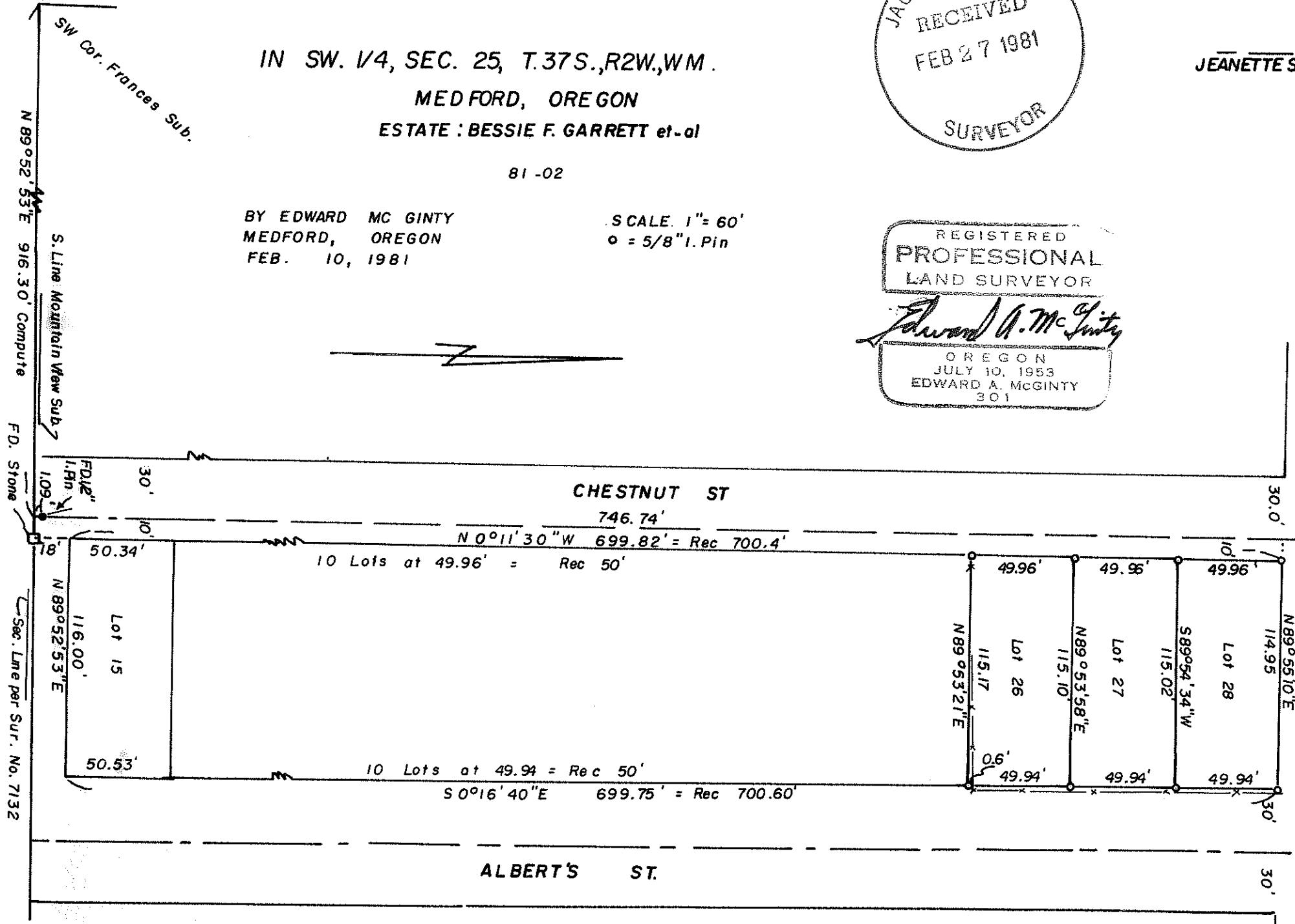
PRUNE ST.

274.93'

N 89° 55' 10" E

351.42'

154.90'



N 89° 52' 53" E 916.30' Compute

SW Cor. Frances Sub.

S. Line Mountain View Sub.

F.D. Stone

Sec. Line per Sur. No. 7132

CHESTNUT ST

746.74'

N 0° 11' 30" W 699.82' = Rec 700.4'

10 Lots at 49.96' = Rec 50'

10 Lots at 49.94' = Rec 50'

S 0° 16' 40" E 699.75' = Rec 700.60'

ALBERT'S ST.

(TA 8500) R2W 25cc 8731

SURVEY NO. 8731

SURVEY NARRATIVE

81-02

Survey for: Estate of Bessie F. Garrette, et-al
c/o Bruce Kellington, Attorney
15 Newtown St.
Medford, Or 97501

Survey by: Edward A. McGinty, R.S.
P.O. Box 1531
205 West Ninth St.
Medford, Or 97501

Basis of Bearing: Prune St. N.89°55'10" E. (Previous traverse
point on center line and monuments at Jeanette St.

Location: Alberts Sub-division in the City of Medford
Located in the SW 1/4 of Sec. 25, T37S, R2W.

Precedence of Survey:

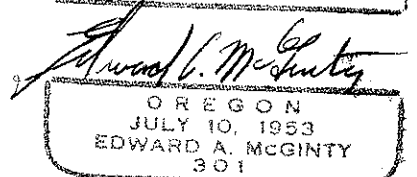
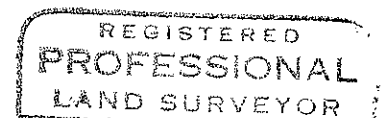
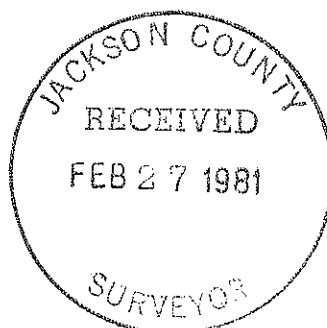
The south line of Alberts Sub-division was determined from the recovery of a stone approx. 14 ins. deep. This stone is shown on said sub-division. Utilizing the previous survey, computed the bearing and distance to the SW. corner of Frances Sub-division. This tie agrees reasonably close with the distance shown on the plat, except for the call to the Section corner. This line was extended easterly according to the plat. Previous Plats of Frances and Mountain View Sub-divisions appears to be in close harmony as to the position of their location of the Section line, whereas the south line of Alberts Sub-division indicates the call to the Section line is southerly and according to Survey No. 7132 it indicates the Section line is still further southerly. No attempt was made to determine the exact width of the strip south of the south line of Alberts Sub-division to the Section line, it is approx. 0.5 ft to 1.0 ft. in width. This strip is irrelevant in determining the original lot corner according to the original plat of Alberts Sub-division, monuments should control.

Prune Street was resurveyed by the city and later retraced on a survey in Mountain View Sub-division locating Chestnut Street at the intersection of Prune St.

Albert Street was located in conformance with the Plat, record distance from Chestnut Street, as the plat shows no record monuments set along Alberts Street. According to previous measurement along Prune Street to Columbus Street the adjoining Sub-division would be in close harmony with the record distance.

Monuments at the intersection of Jeanette St., originally being set 30 ins. deep, was reset by the city and is now approx. 6 ins. deep. The 1/2 in. iron pin found at or near the SE corner in Mountain View Sub-division is approx. 5 ins. deep. The monuments set shown at lot corners being iron pins, 5/8 in. diam., and approx. 24ins. long, set flush with the surface.

The validity of any encroachment was not determined by this survey.



(TL 8500) 37 2W 25 CC