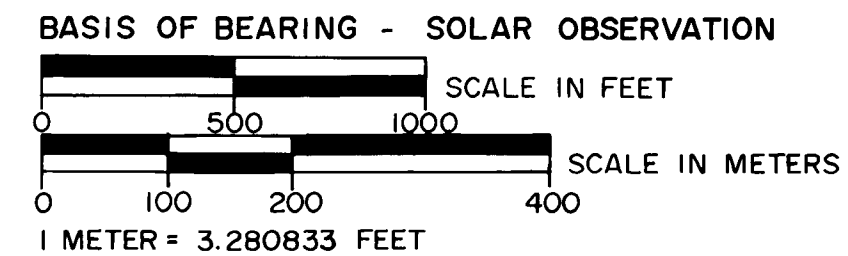
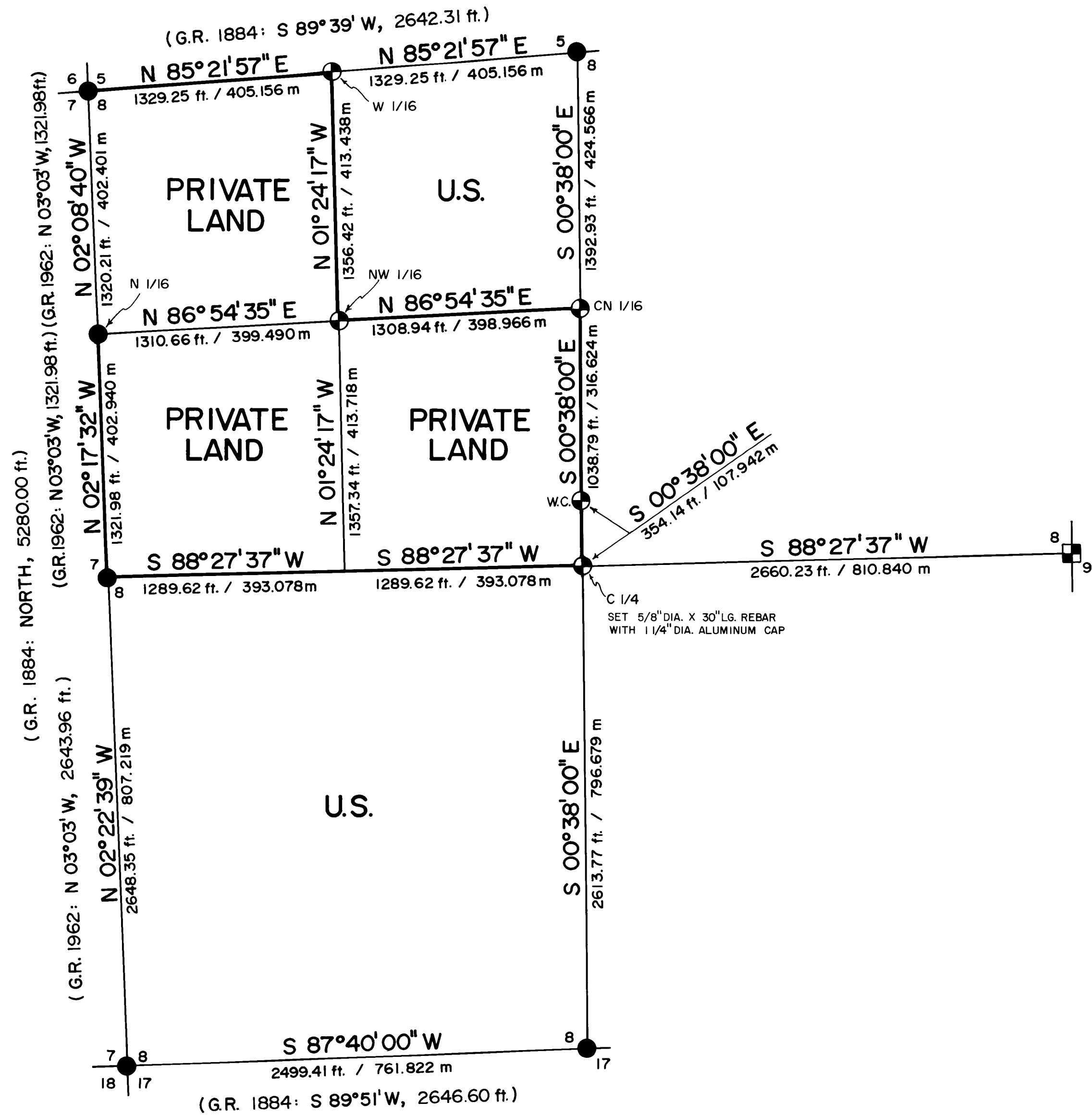


MAP OF SURVEY
FOR
ROGUE RIVER NATIONAL FOREST
P.O. BOX 520
MEDFORD, OREGON
DECEMBER 22, 1980



HISTORY OF SURVEYS

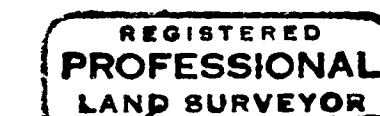
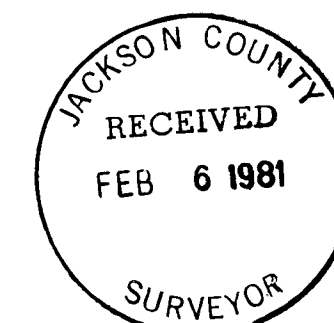
SUBDIVISION OF THE TOWNSHIP WAS PERFORMED BY RUFUS MOORE IN 1884 UNDER CONTRACT NO. 496. REMONUMENTATION AND RESURVEY OF THE SECTION LINE BETWEEN SECTIONS 7 & 8 WAS PERFORMED BY THE BLM IN 1962. THE SURVEY OF THE LINE BETWEEN SECTIONS 8 & 9 WAS PERFORMED BY P.L.S. 1071 AS PART OF THE SUBDIVISION OF SECTION 9 FILED UNDER R.S. 7463 IN 1978.

LEGEND

- FOUND STANDARD BLM OR COUNTY SURVEYOR MONUMENT.
- ⊕ SET 2 1/2" DIA. X 30" LG. IRON POST WITH 2 1/2" DIA. BRASS CAP UNLESS OTHERWISE NOTED.
- ⊠ FOUND 2 1/2" DIA. X 30" LG. IRON POST WITH 2 1/2" DIA. BRASS CAP (SET P.L.S. 1071 UNDER R.S. NO. 7463).
- G.R. GOVERNMENT RECORD.
- R.S. RECORD SURVEY.
- W.C. WITNESS CORNER.
- PROPERTY LINE ESTABLISHED AND POSTED THIS SURVEY.
- SECTION LINE CALCULATED FROM TRAVERSE SURVEY.

CERTIFICATE OF SURVEY

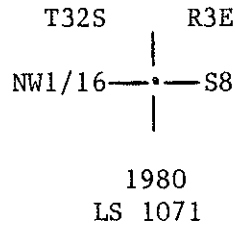
I, HAROLD L. CENTER, REGISTRATION NO. 1071 REGISTERED PROFESSIONAL LAND SURVEYOR, STATE OF OREGON, HEREBY CERTIFY THAT THIS MAP CORRECTLY REPRESENTS A SURVEY MADE BY ME OR UNDER MY DIRECTION, IN CONFORMANCE WITH THE LAWS OF THE STATE OF OREGON, AT THE REQUEST OF THE U.S. FOREST SERVICE.



Harold L. Center
HAROLD L. CENTER
REG. NO. 1071
MAY 25, 1974
M.S. 1971

| | |
|---|---------------------|
| U.S. DEPARTMENT OF AGRICULTURE FOREST SERVICE REGION 6 ROGUE RIVER NAT'L FOREST | |
| DEPENDENT RESURVEY and SECTION SUBDIVISION SEC. 8, T. 32 S., R. 3 E., W.M. JACKSON COUNTY, OREGON | |
| REVIEWED BY <i>D. McLaughlin</i> | DATE <i>1/22/81</i> |
| REVIEWED BY <i>R. J. Hathaway</i> | DATE <i>1/22/81</i> |

At the corner position I set a 2 1/2-inch diameter galvanized iron post with a 2 1/2-inch diameter brass cap, marked:



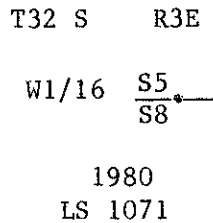
From which the following references:

A fir 9 inches in diameter bears N38° 52' W 4.2 feet distance. Scribed NW1/16 S8 LS 1071 BT.

A cedar 14 inches in diameter bears S61° 50' E 10.3 feet distance. Scribed NW1/16 S8 LS 1071 BT.

West one-sixteenth corner common to Sections 5 and 8, Township 32 South, Range 3 East, Willamette Meridian.

At the corner position I set a 2 1/2-inch diameter galvanized iron post with a 2 1/2-inch diameter brass cap, marked:



From which the following references:

A cedar 8-inches in diameter bears N77° 04' E 17.0 feet distance. Scribed W1/16 S5 LS 1071 BT.

A Douglas-fir 13-inches in diameter bears S57° 03' W 29.3 feet distance. Scribed W1/16 S8 LS 1071 BT.

December 22, 1980

HAROLD L. CENTER
Registered Professional Land Surveyor
Oregon Certificate No. 1071

REGISTERED
PROFESSIONAL
LAND SURVEYOR

OREGON
HAROLD L. CENTER
JULY 30, 1974
No. 1071

JACKSON COUNTY
RECEIVED
FEB 6 1981
SURVEYOR

At the corner position I set a 5/8-inch diameter rebar with a 1 1/4-inch diameter aluminum cap set in the lava rock river bed near low water of the Rogue River, cap marked:

C 1/4

.

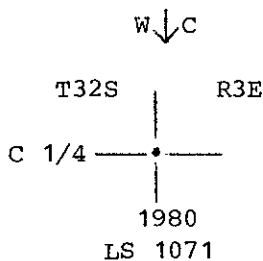
S8

From which the following references:

A fir 9 inches in diameter bears N39° 07' E 74.5 feet distance.
 Scribed C 1/4 S8 LS 1071 BT.

A Douglas-fir 27 inches in diameter bears N6° 42' W 215.5 feet distance.
 Scribed C 1/4 S8 LS 1071 BT.

Witness corner monument bears N0° 38' 00" W 354.14 feet distance; monument is 2 1/2-inch diameter galvanized iron post with a 2 1/2-inch diameter brass cap, marked:



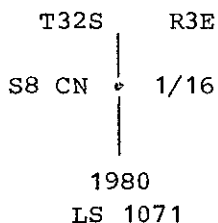
From which the following references:

A fir 8 inches in diameter bears N63° 51' E 24.1 feet distance. Scribed X BT.

A Douglas-fir 7 inches in diameter bears S36° 28' E 21.1 feet distance. Scribed X BT.

Center North one-sixteenth corner of Section 8, Township 32 South, Range 3 East, Willamette Meridian.

At the corner position I set a 2 1/2-inch diameter galvanized iron post with a 2 1/2-inch diameter brass cap, marked:



From which the following references:

A fir 6 inches in diameter bears N23° 16' W 22.4 feet distance. Scribed CN 1/16 S8 LS 1071 BT.

A cedar 7 inches in diameter bears N79° 32' E 30.9 feet distance. Scribed CN 1/16 S8 LS 1071 BT.

Northwest one-sixteenth corner of Section 8, Township 32 South, Range 3 East, Willamette Meridian.

From which the following references:

A fir 15 inches in diameter bears S35° 47' E 16.3 feet distance. Scribing visible.

A hemlock 16 inches in diameter bears N10° 35' E 50.4 feet distance. Scribing visible.

Remains of a fir stump, diameter indeterminable, bears N43° 12' E 15.6 feet distance. Scribing visible.

Section corner common to Sections 7, 8, 17 and 18, Township 32 South, Range 3 East, Willamette Meridian.

At the corner position I found a standard Bureau of Land Management monument, brass cap marked:

U.S. Dept. of Interior
Unlawful to Disturb
T32S R3E

| | |
|----|----|
| 7 | 8 |
| 18 | 17 |

1962

Bureau of Land Management
Cadastral Survey

From which the following references:

A cedar snag 10 inches in diameter bears N55° 30' E 5.3 feet distance. Scribing visible.

A cedar 32 inches in diameter bears S82° E 12.0 feet distance. Scribing visible.

A fir 13 inches in diameter bears S7° E 20.5 feet distance, with a healed blaze.

A rotten Douglas-fir stump, mean diameter of 35 inches, bears S 40° W 4.0 feet distance. Bark scribing visible.

A Douglas-fir 17 inches in diameter bears S 80° 30' W 43.3 feet distance, with a healed blaze.

A Douglas-fir 17 inches in diameter bears N43° W 20.3 feet distance, with a healed blaze.

A dead and down fir 25 inches in diameter has been moved by a bulldozer; exact point of origin unknown; currently bears N 34° W 42.2 feet distance. Opened face.

A Douglas-fir 6 inches in diameter bears N 19° E 11.6 feet distance. Scribing visible.

Corners Established This Survey

Center one-quarter corner of Section 8, Township 32 South, Range 3 East, Willamette Meridian.

North one-sixteenth corner common to Sections 7 and 8, Township 32 South, Range 3 East, Willamette Meridian.

At the corner position I found a standard Bureau of Land Management monument, brass cap marked:

U.S. Dept. of Interior
Unlawful to Disturb
N 1/16

S7 | S8
1962
Bureau of Land Management
Cadastral Surveys

From which the following references:

A fir 16 inches in diameter bears N78° 01' E 42.6 feet distance, with a healed blaze.

A fir 10 inches in diameter bears S69° 03' W 20.5 feet distance, with a healed blaze.

Section corner common to Sections 5, 6, 7 and 8, Township 32 South, Range 3 East, Willamette Meridian.

At the corner position I found a standard Bureau of Land Management monument, brass cap marked:

U.S. Dept. of Interior
Unlawful to Disturb
T32S R3E

S6 | S5
S7 | S8

1962
Bureau of Land Management
Cadastral Survey

From which the following references:

A fir 10 inches in diameter bears S46° 54' E 22.1 feet distance, with a healed blaze.

A fir 11 inches in diameter bears S51° 40' W 20.5 feet distance, with a healed blaze.

A cedar 22 inches in diameter bears N86° 18' W 24.2 feet distance, with a healed blaze.

A fir 23 inches in diameter bears S67° 01' W 19.4 feet distance, with a healed blaze.

One-quarter corner common to Sections 5 and 8, Township 32 South, Range 3 East, Willamette Meridian.

At the corner position I found a standard Jackson County Surveyor's monument, brass cap marked:

T32S R3E

1/4S 5/8
1974
Jackson County

EQUIPMENT USED: This work was performed utilizing Wild T-2 Theodolite and Hewlett-Packard 3805-A Electronic Distance Meter.

Corners Accepted For Control

One-quarter corner common to Sections 8 and 9, Township 32 South, Range 3 East, Willamette Meridian.

I found this corner as described in Record Survey Number 7463. This corner will not be redescribed within this narrative.

One-quarter corner common to Sections 8 and 17, Township 32 South, Range 3 East, Willamette Meridian.

At the corner position I found a standard Jackson County Surveyor's monument, brass cap marked:

Jackson County
8
17
1979

From which the following references:

A pine 14 inches in diameter bears S85° 24' E 70.4 feet distance. Scribing visible.

A hemlock 11 inches in diameter bears N53° 15' E 37.4 feet distance. Scribing visible.

One-quarter corner common to Sections 7 and 8, Township 32 South, Range 3 East, Willamette Meridian.

At the corner position I found a standard Bureau of Land Management monument, brass cap marked:

U.S. Dept. Of Interior
Unlawful to Disturb
T32S R3E

1/4

S7 | S8
1962

Bureau of Land Management
Cadastral Surveys

From which the following references:

A fir 12 inches in diameter bears N62° 12' E 42.3 feet distance, with a healed blaze.

A dead and down yew 13 inches in diameter bears N83° 27' W 21.2 feet distance. Scribing visible.

Established a new reference:

A Douglas-fir 9 inches in diameter bears S84° 49' W 52.3 feet distance. Scribed 1/4 S7 LS 1071 BT.

SURVEY NARRATIVE TO COMPLY WITH
PARAGRAPH 209.250 OREGON REVISED STATUES

SURVEY FOR: Rogue River National Forest
P. O. Box 520
Medford, Oregon 97501

LOCATION: Section 8, Township 32 South, Range 3 East,
Willamette Meridian, Jackson County, Oregon.

BASIS OF BEARING: Solar observation

PURPOSE: To establish property corners and mark and post National
Forest ownership within Section 8.

PROCEDURE: Prior to commencement of this survey, an investigation
of corner control was made. The Township was subdivided
under contract number 496 by Rufus Moore in March 1884.
The Bureau of Land Management resurveyed the section
line common to Sections 7 and 8, under Group 350 and 474
in 1962. During this work the Northwest and Southwest
section corners of Section 8 were remonumented from orig-
inal evidence, the one-quarter corner of Sections 7
and 8 was reestablished by single proportion, and the
North one-sixteenth corner was established.

The one-quarter corners common to Sections 5 and 8, and 8
and 17 were remonumented from original evidence, by the
Jackson County Surveyor's Office in 1974, and 1979,
respectively. The one-quarter corner common to Sections
8 and 9 was reestablished by single porportion under
Record Survey Number 7463 in 1978.

With the above corner control identified, I surveyed a
series of closed traverses, tying in the controlling
corners for the establishment of interior corners.

After calculating the controlling corner positions, I
find the monuments for the one-quarter corner and North
one-sixteenth corner, common to Sections 7 and 8,
established by the Bureau of Land Management's cadastral
survey of 1962, to be out of position 2.93 feet North by
3.80 feet West and 2.29 feet North by 3.63 feet West,
respectively. I presented, to the Oregon State Office
of the Bureau of Land Management, my information on
where the monuments lie in relation to the true propor-
tional corner position, and requested that the monuments
be placed at their proper position. In the Bureau of
Land Management response, they concluded that the monu-
ments be left in their current position, based on the
fact that they were set within the accuracy requirements
of the 1947 Manual of Survey Instruction and have been in
place since 1962.

Before accepting the 1962 monuments, I computed the sec-
tion subdivision, using first the monumented positions,
then the true corner positions, in order to compare
acreage differences created by the differences in corner
positions. The accumulation of this acreage, within
Section 8, computed to .002 acres, and a cruise for
timber volume revealed no significant difference. Since
there was no appreciable difference in acreage or timber
volume, I then held the monumented corner positions as a
basis for the section subdivision.