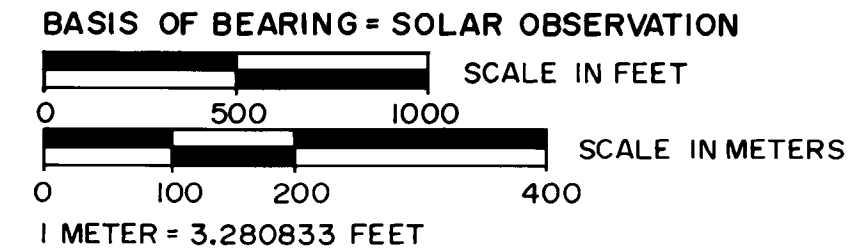
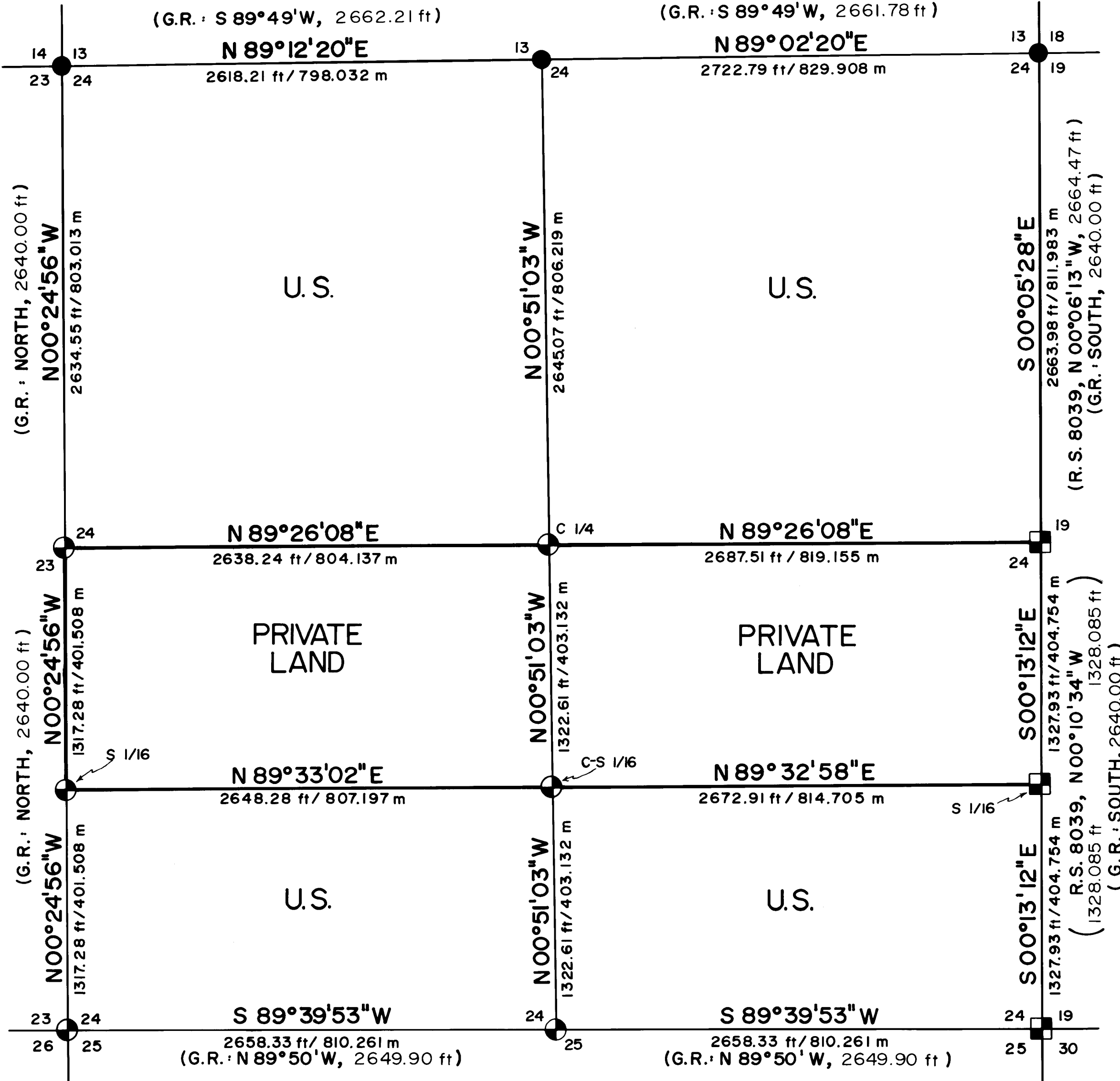


MAP OF SURVEY FOR ROGUE RIVER NATIONAL FOREST

P.O. BOX 520
MEDFORD, OREGON
DECEMBER 12, 1980



HISTORY OF SURVEYS

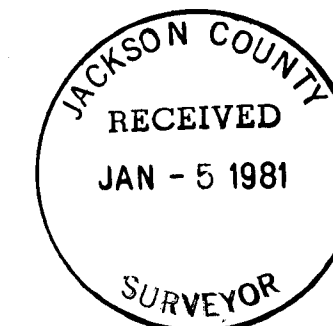
THE ORIGINAL SURVEY AND CORNER ESTABLISHMENT WAS PERFORMED BY SAMUEL W. LACKLAND UNDER CONTRACT NO. 429, DATED JANUARY 5, 1882. THE EAST LINE WAS RETRACED BY REGISTERED PROFESSIONAL LAND SURVEYOR NO. 1035, GERALD NYGREN. SURVEYOR NYGREN RECOVERED AND REMONUMENTED CERTAIN CONTROLLING CORNERS FROM RECOVERED ORIGINAL EVIDENCE. SURVEYOR NYGREN ALSO ESTABLISHED CONTROLLING ONE - SIXTEENTH CORNERS ALONG SAID LINE. REMAINING CONTROLLING CORNERS HAD BEEN REMONUMENTED BY EITHER THE BUREAU OF LAND MANAGEMENT, CADASTRAL SURVEYS OR THE JACKSON COUNTY SURVEYOR. NO RECORD OF OTHER SURVEYS WAS RECOVERED.

LEGEND

- FOUND STANDARD BLM OR COUNTY SURVEYOR MONUMENT.
- ⊙ SET 2 1/2" DIA. X 30" LG. IRON POST WITH 2 1/2" DIA. BRASS CAP UNLESS OTHERWISE NOTED.
- ⊠ FOUND 2 1/2" DIA. X 30" LG. IRON POST WITH 2 1/2" DIA. BRASS CAP (SET BY L.S. 1035 UNDER RECORD SURVEY NO. 8039).
- G.R. GOVERNMENT RECORD.
- R.S. RECORD SURVEY.
- SECTION LINE CALCULATED FROM TRAVERSE SURVEY.
- PROPERTY LINE ESTABLISHED AND POSTED THIS SURVEY.

CERTIFICATE OF SURVEY

I, HAROLD L. CENTER, REGISTRATION NO. 1071, REGISTERED PROFESSIONAL LAND SURVEYOR, STATE OF OREGON, HEREBY CERTIFY THAT THIS MAP CORRECTLY REPRESENTS A SURVEY MADE BY ME OR UNDER MY DIRECTION IN CONFORMANCE WITH THE LAWS OF THE STATE OF OREGON, AT THE REQUEST OF THE U.S. FOREST SERVICE.



U. S. DEPARTMENT OF AGRICULTURE FOREST SERVICE	
REGION 6	ROGUE RIVER NAT'L. FOREST
DEPENDENT RESURVEY and SECTION SUBDIVISION SEC. 24, T.40 S., R. 3 W., W.M. JACKSON COUNTY, OREGON	
REVIEWED BY <i>D. M. ...</i>	DATE 12/30/80
REVIEWED BY <i>R. J. Hathaway</i>	DATE 12/30/80

From which the following references:

A 7-inch diameter fir bears N 63° 50' W 10.10 feet distance, scribed
C1/4 S24 LS 1071 BT.

A 12-inch diameter fir bears S 70° 43' W 114.83 feet distance, scribed
C1/4 S24 LS 1071 BT.

Center south one-sixteenth corner Section 24, Township 40 South, Range
3 West.

At the corner point, I set a 2 1/2-inch diameter galvanized iron post
with a 2 1/2-inch diameter brass cap marked:

T40S R3W
C
S 1/16 | S24
C
1980
LS 1071

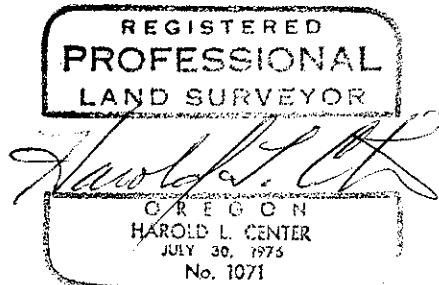
From which the following references:

A 13-inch diameter fir bears N 03° 55' E 6.10 feet distance, scribed CS
1/16 S24 LS 1071 BT.

A 15-inch diameter fir bears S 50° 07' E 7.64 feet distance, scribed CS
1/16 S24 LS 1071 BT.

December 12, 1980

HAROLD L. CENTER
Registered Professional Land Surveyor
Oregon Certificate No. 1071



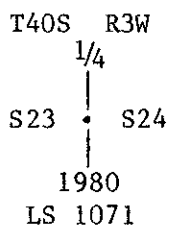
From which the following references:

A 25-inch diameter fir bears S34°09'E., 18.80 feet distance, scribed
 1/4 S25 LS 1071 BT.

A 28-inch diameter fir bears N57°50'E., 50.60 feet distance, scribed
 1/4 S24 LS 1071 BT.

One-quarter corner common to Sections 23 and 24, Township 40 South,
 Range 3 West.

At the corner point, I set a 2 1/2-inch diameter, galvanized iron post
 with 2 1/2-inch diameter brass cap marked:



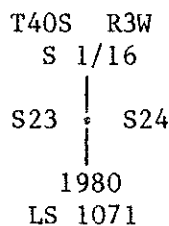
From which the following references:

A 14-inch diameter fir bears N72°05'W., 32.80 feet distance, scribed
 1/4 S23 LS 1071 BT.

A 10-inch diameter fir bears N04°33'E., 32.50 feet distance, scribed
 1/4 S24 LS 1071 BT.

South one-sixteenth corner common to Sections 23 and 24, Township 40
 South, Range 3 West.

At the corner point, I set a 2 1/2-inch diameter galvanized iron post
 with a 2 1/2-inch diameter brass cap marked:



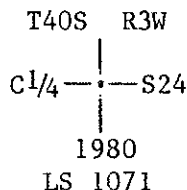
From which the following references:

A 11-inch diameter fir bears S72°15'E., 4.00 feet distance, scribed
 S1/16 S24 LS 1071 BT.

A 12-inch diameter fir bears S33°17'W., 5.70 feet distance, scribed
 S1/16 S23 LS 1071 BT.

Center one-quarter corner Section 24, Township 40 South, Range 3 West.

At the corner point, I set a 2 1/2-inch diameter galvanized iron post
 with 2 1/2-inch diameter brass cap marked:



From which the following references:

A 15-inch diameter fir bears S22°00'E., 36.73 feet distance, healed blaze.

A 19-inch diameter Madrone bears S54°04'W., 23.00 feet distance, scribe visible.

A 10-inch diameter fir bears N56°29'W., 21.60 feet distance, scribe visible.

A 22-inch diameter fir bears N82°15'E., 37.80 feet distance, scribe visible.

Section corner common to Sections 23, 24, 25 and 26, Township 40 South, Range 3 West.

At the corner point, I found a 14- by 12- by 6-inch quartz stone, firmly set with 1 notch on east and 2 notches on south edge of stone.

At the corner point, I set a 2 1/2-inch diameter galvanized iron post with 2 1/2-inch diameter brass cap marked:

T40S R3W	
S23	S24
S26	S25
1980	
LS 1071	

From which the following references:

A rock out crop with P-K nail bears S82°01'E, 115.23 feet distance.

A 25-inch diameter pine bears S50°42'E., 284.24 feet distance, scribed T40S R3W S25 LS 1071 BT.

A 16-inch diameter pine bears S88°42'W., 61.54 feet distance, scribed T40S R3W S26 LS 1071 BT.

A 26-inch diameter fir bears N53°05'W., 60.64 feet distance, scribed T40S R3W S23 LS 1071 BT.

A old blazed line runs west from this corner.

CORNERS ESTABLISHED THIS SURVEY

One-quarter corner common to Sections 24 and 25, Township 40 South, Range 3 West.

At the corner point, I set a 2 1/2-inch diameter galvanized iron post with a 2 1/2-inch diameter brass cap marked:

T40S R3W	
1/4	$\frac{S24}{S25}$
1980	
LS 1071	

Work was performed utilizing a wild T-2 Theodolite and Hewlett-Packard 3808-A Electronic Distance Meter.

Corners accepted for Control

Note the following corners were described by Gerald V. Nygren, R.L.S. No. 1035, during his survey of Section 19, Township 40 South, Range 2 West (Ref. Record Survey No. 8039). These corners were found as described by Surveyor Nygren and will not be redescribed within this narrative.

One-quarter corner common to Section 24, Township 40 South, Range 3 West and Section 19, Township 40 South, Range 2 West.

South one-sixteenth corner common to Section 24, Township 40 South, Range 3 West; and Section 19, Township 40 South, Range 2 West.

Section corner common to Sections 24 and 25, Township 40 South, Range 3 West; and Sections 19 and 30, Township 40 South, Range 2 West.

The following corners were accepted for control within this survey and are described as follows:

One-quarter corner common to Sections 13 and 24, Township 40 South, Range 3 West

At the corner point I found a standard Jackson County Surveyors monument marked

T40S R3W
 13
 1/4—.—
 24
 C.S.
 1975

From which the following references:

A 24-inch diameter pine bears N88°42'E 23.00 feet distance, healed blaze.

A 15-inch diameter fir bears S41°56'W 35.90 feet distance, healed blaze.

A 15-inch diameter fir bears S56°26'W, 17.00 feet distance, this tree is dead and broken at 15' above ground, badly rotted, partial scribe visible.

A 12-inch diameter fir bears N53°00'E., 34.85 feet distance, healed blaze.

Section corner common to Sections 13, 14, 23 and 24, Township 40 South, Range 3 West.

At the corner point, I found a standard Jackson County Surveyor's brass cap monument marked:

Jackson County 1977

T40S	R3W
14	13
23	24

SURVEY NARRATIVE TO COMPLY WITH
PARAGRAPH 209.250 OREGON REVISED STATUTES

Survey For: Rogue River National Forest
P. O. Box 520
Medford, Oregon 97501

Location: Section 24, Township 40 South, Range 3 West,
Willamette Meridian, Jackson County Oregon

Basis of Bearing: Solar observation

Purpose: To establish corners and mark and post National
Forest boundaries within Section 24.

Procedure: Prior to commencement of this survey, an investiga-
tion of controlling section corners was made. The
northwest, north $\frac{1}{4}$ and northeast section corners
had been remonumented by either the Bureau of Land
Management or Jackson County Surveyor. The east
one-quarter and southeast section corner had been
remonumented by Registered Land Surveyor No. 1035,
Gerald V. Nygren, during his Survey of Section 19,
Township 40 South, Range 2 West. (Ref. Jackson
County Surveyors Records Survey No. 8039).

The southwest, the south one-quarter, and west one-
quarter corners had not been recovered. I began
this survey with establishment of control stations
near Squaw Peak and Squaw Mountain. From these
stations, I establish a series of closed traverse
ties to the northwest, and southeast corners of
section 24 along with a tie to the section corner
common to sections 25, 26, 35 and 36; from this
data, a search area was determined for the south-
west corner section 24. An extensive search was
performed with a 14- x 12- x 6-inch quartz stone
recovered marking the southwest corner section 24
(see additional discription within this narrative).
With the recovery of the southwest corner, posi-
tions for the south and west one-quarter corners
were computed and a search for those corners per-
formed. A search for the one-quarter corner common
to sections 23 and 24 failed to recover any trace
of the original corner. Topography calls along
this line fail to agree with original calls. This
corner was reestablished by proportionate measure.
A search for the one-quarter corner common to sec-
tions 24 and 25 also failed to produce any trace of
the original corner. Topography calls along this
line did agree favorably; however, no trace of the
original corner could be located. This corner was
also reestablished by proportionate measure.

With the above corner control recovered, I pro-
ceeded to subdivide section 24, establishing cor-
ners and marking lines as shown on the attached
map. True lines were posted using fence posts with
National Forest boundary signs attached, trees
along the true line were blazed and painted with
red timber-marking paint.