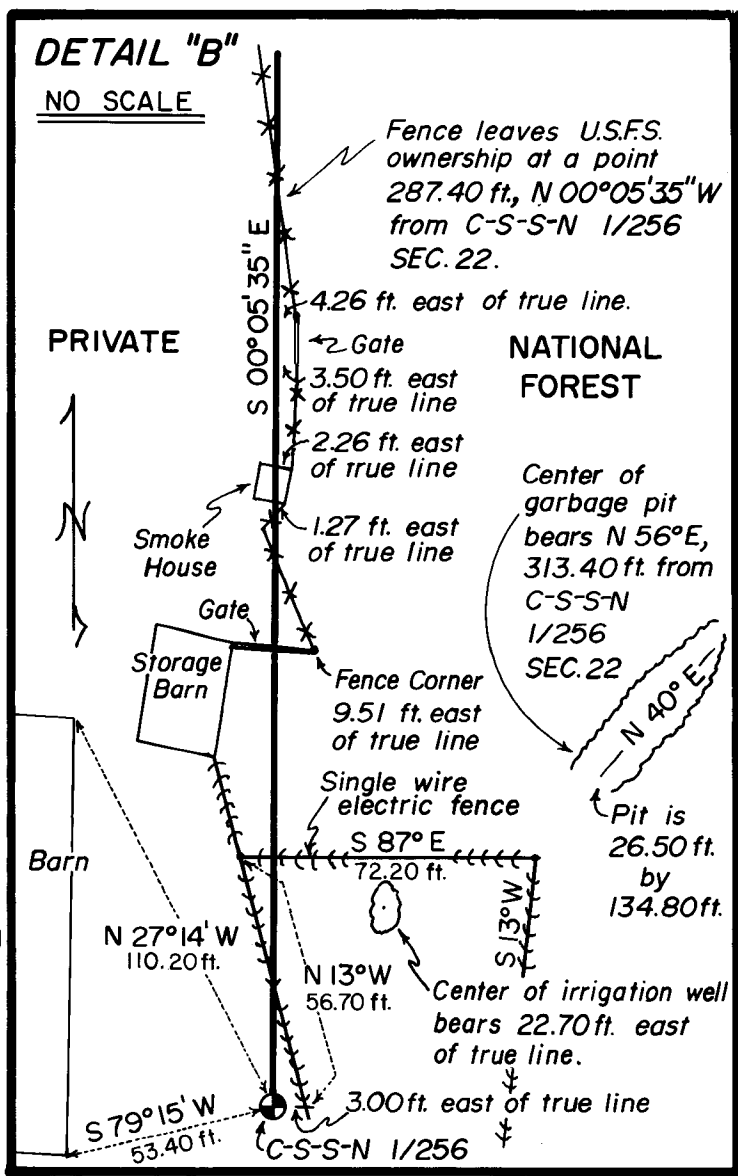
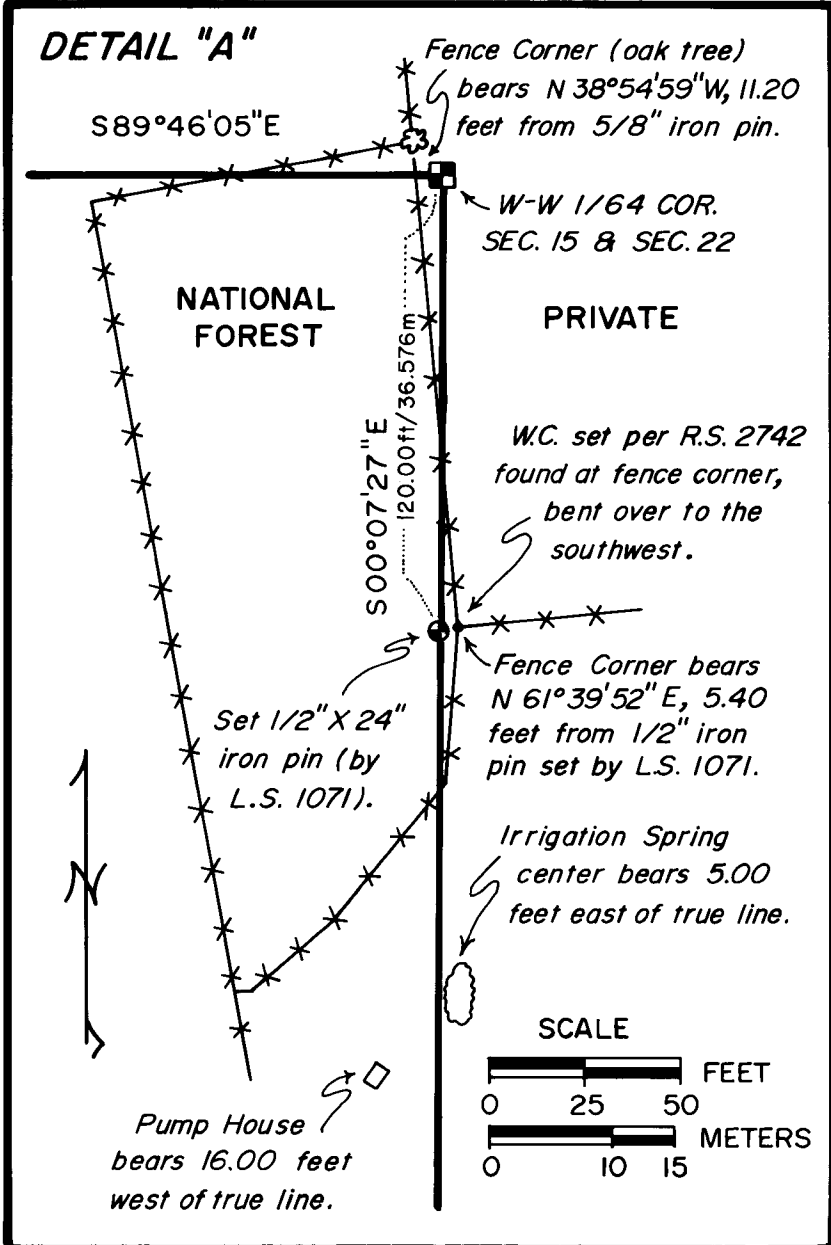
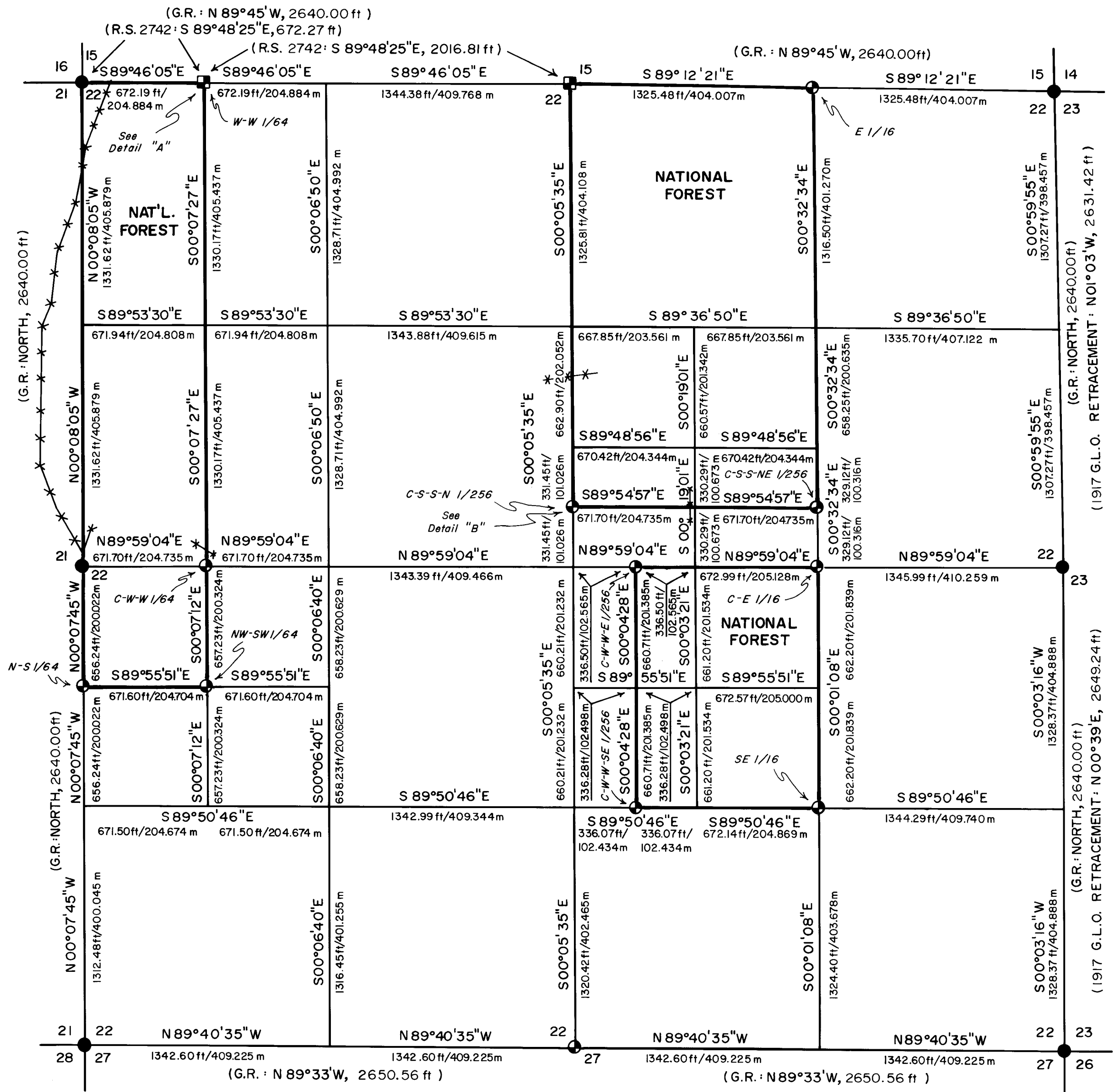


MAP OF SURVEY FOR ROGUE RIVER NATIONAL FOREST

P.O. BOX 520
MEDFORD, OREGON
NOVEMBER 15, 1980



HISTORY OF SURVEYS

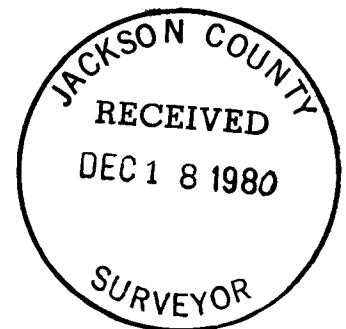
THE ORIGINAL SURVEY AND ESTABLISHMENT OF CORNERS FOR SECTION 22 WAS PERFORMED BY SEWELL TRUAX UNDER CONTRACT NO. 74, DATED JUNE 11, 1857.

THE EAST LINE WAS RETRACED AND THE CORNERS ALONG THE EAST LINE WERE REMONUMENTED BY WRIGHT AND MENSCH UNDER G.L.O. INSTRUCTIONS, GROUP NO. 31, DATED AUGUST 19, 1916.

THE NORTHWEST AND SOUTHWEST CORNERS OF SECTION 22 WERE REMONUMENTED BY THE JACKSON COUNTY SURVEYOR IN 1941, AND AGAIN IN 1980. THE WEST ONE-QUARTER CORNER OF SECTION 22 WAS REMONUMENTED BY THE JACKSON COUNTY SURVEYOR IN 1976.

THE NORTH ONE-QUARTER CORNER WAS REMONUMENTED FROM ORIGINAL EVIDENCE, AND THE WEST-WEST ONE-SIXTYFOURTH CORNER OF SECTIONS 15 AND 22 WAS ESTABLISHED BY P.L.S. NO. 281 UNDER SURVEY NO. 2742, DATED APRIL 6, 1965. AN ADDITIONAL SURVEY FOR A ONE ACRE TRACT OF LAND ALONG THE NORTH LINE OF SECTION 22 WAS CONDUCTED BY P.L.S. NO. 505 UNDER SURVEY NO. 5982, DATED APRIL 11, 1975, USING MONUMENTS ESTABLISHED UNDER SURVEY NO. 2742.

NO OTHER SURVEYS ARE ON RECORD.



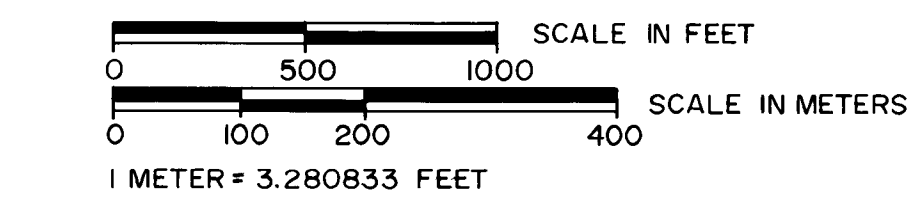
U.S. DEPARTMENT OF AGRICULTURE
FOREST SERVICE
REGION 6
ROGUE RIVER NAT'L. FOREST

DEPENDENT RESURVEY
and
SECTION SUBDIVISION
SEC. 22, T. 39 S., R. 3 W., W.M.
JACKSON COUNTY, OREGON

REVIEWED BY *D.L. Donald* DATE *12/17/80*
REVIEWED BY *R.J. Hathaway* DATE *12/17/80*

LEGEND

- FOUND STANDARD GLO OR COUNTY SURVEYOR MONUMENT.
- FOUND 5/8" DIA. IRON PIN (SET BY L.S. NO. 281).
- ⊕ SET 2 1/2" DIA. X 30" LG. IRON POST WITH 2 1/2" BRASS CAP UNLESS OTHER NOTED.
- G.R. GOVERNMENT RECORD.
- R.S. RECORD SURVEY ON FILE.
- W.C. WITNESS CORNER.
- SECTION LINE CALCULATED FROM TRAVERSE SURVEY.
- PROPERTY LINE ESTABLISHED AND POSTED THIS SURVEY.
- FENCE LINE.



CERTIFICATE OF SURVEY

I, HAROLD L. CENTER, REGISTRATION NO. 1071, REGISTERED PROFESSIONAL LAND SURVEYOR, STATE OF OREGON, HEREBY CERTIFY THAT THIS MAP CORRECTLY REPRESENTS A SURVEY MADE BY ME OR UNDER MY DIRECTION IN CONFORMANCE WITH THE LAWS OF THE STATE OF OREGON, AT THE REQUEST OF THE U.S. FOREST SERVICE.

BASIS OF BEARING = SOLAR OBSERVATION

From which the following references:

A fir 16-inches in diameter bears S19° 26' W 23.0 feet distance.
Scribed "1/256 S22 LS 1071 BT".

A fir 17-inches in diameter bears N88° 47' E 44.6 feet distance.
Scribed "1/256 S22 LS 1071 BT".

Center-west-west-southeast one two-fifty-sixth corner of Section 22,
Township 39 South, Range 3 West.

At the corner point I set a 2½-inch diameter galvanized iron post with a
2½-inch diameter brass cap marked:

T39S R3W
C-W-W-SE 1/256

S22
LS 1071
1980

From which the following references:

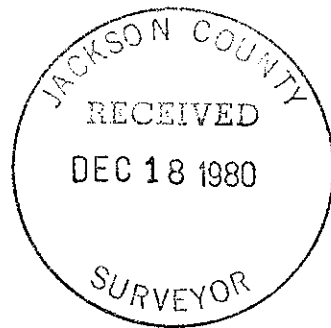
A pine 17-inches in diameter bears S32° 07' W 33.2 feet distance.
Scribed "1/256 S22 LS 1071 BT".

A fir 14-inches in diameter bears N53° 41' W 21.9 feet distance.
Scribed "1/256 S22 LS 1071 BT".

Southeast one-sixteenth corner of Section 22, Township 39 South, Range 3
West.

At the corner point I set a 2½-inch diameter galvanized iron post with a
2½-inch diameter brass cap, protruding 2½-inches above ground, marked:

T39S R3W
SE 1/16
S22
LS 1071
1980



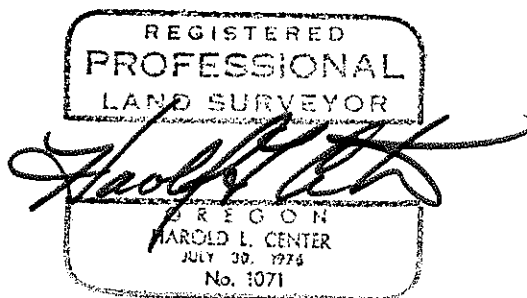
From which the following references:

An oak 7-inches in diameter bears S12° 43' E 22.7 feet distance.
Scribed "SE 1/16 S22 LS 1071 BT".

A fir 11-inches in diameter bears S66° 45' W 95.3 feet distance.
Scribed "SE 1/16 S22 LS 1071 BT".

November 15, 1980

HAROLD L. CENTER
Registered Professional Land Surveyor
Oregon Certificate No. 1071



A fir 15-inches in diameter bears N21° 30' W 102.8 feet distance.
Scribed "1/256 S22 LS 1071 BT".

Center-South-South-North one two-fifty-sixth corner of Section 22, Township 39 South, Range 3 West.

At the corner point I set a 2½-inch diameter galvanized iron post with a 2½-inch diameter brass cap, at ground level, marked:

T39S R3W
C-S-S-N 1/256
S22
.
1980
LS 1071

From which the following references:

Cement foundation at the SE corner of barn bears S79° 15' W 53.4 feet distance.

Cement foundation at the NE corner of barn bears N27° 14' W 110.2 feet distance.

Center-east one-sixteenth corner of Section 22, Township 39 South, Range 3 West.

At the corner point I set a 2½-inch diameter galvanized iron post with a 2½-inch diameter brass cap, protruding 3-inches above ground, marked:

T39S R3W
E 1/16
C —•— C
S22
1980
LS 1071

From which the following references:

A fir 11-inches in diameter bears S07° 00' E 25.5 feet distance.
Scribed "CE 1/16 S22 LS 1071 BT".

A fir 8-inches in diameter bears S87° 38' W 38.8 feet distance.
Scribed "CE 1/16 S22 LS 1071 BT".

Center-west-west-east one two-fifty-sixth corner of Section 22, Township 39 South, Range 3 West.

At the corner point I set a 2½-inch diameter galvanized iron post with a 2½-inch diameter brass cap marked:

T39S R3W
C-W-W-E 1/256
.
S22
LS 1071
1980

From which the following references:

An oak 18-inches in diameter bears N33° 49' W 171.7 feet distance.
Scribed "C-W-W 1/64 LS 1071 BT".

A pine 19-inches in diameter bears N00° 58' W 125.5 feet distance.
Scribed "C-W-W 1/64 LS 1071 BT".

Southwest corner of the property described in Jackson County Deed Record 76-06248, located in Section 22, Township 39 South, Range 3 West.

At the corner point I set a 1/2-inch diameter by 24-inch long iron pin at the request of the adjoining landowner.

From which the following references:

The west-west one-sixty-fourth corner common to Sections 15 and 22 bears N00° 07' 27" W 120.0 feet distance.

A witness corner, set by PLS 505 during Record Survey No. 5982, dated April 11, 1975, bears N61° 39' 52" E 5.4 feet distance. This witness corner was found in a fence corner, bent over to the southwest.

East one-sixteenth corner common to Sections 15 and 22, Township 39 South, Range 3 West.

At the corner point I set a 2 1/2-inch diameter galvanized iron post with a 2 1/2-inch diameter brass cap marked:

T39S R3W
E 1/16 $\frac{S15}{S22}$
1980
LS 1071

From which the following references:

An oak 25-inches in diameter bears N79° 42' E 66.1 feet distance.
Scribed "E 1/16 S15 LS 1071 BT".

An oak 10-inches in diameter bears S09° 10' E 42.7 feet distance.
Scribed "E 1/16 S22 LS 1071 BT".

Center-South-South Northeast one two-fifty-sixth corner of Section 22, Township 39 South, Range 3 West.

At the corner point I set a 2 1/2-inch diameter galvanized iron post with a 2 1/2-inch diameter brass cap, protruding 24-inches above ground, marked:

T39S R3W
C-S-S-NE 1/256
S22
.
1980
LS 1071

From which the following references:

A pine 18-inches in diameter bears N48° 02' W 74.1 feet distance.
Scribed "1/256 S22 LS 1071 BT".

An old pine snag with a BLM tag that says "approximate corner" bears S10° 58' E 41.0 feet distance.

North-South one-sixty-fourth corner common to Sections 21 and 22, Township 39 South, Range 3 West.

At the corner point I set a 2½-inch diameter galvanized iron post with a 2½-inch diameter brass cap, protruding 6-inches above ground, marked:

T39S R3W
NS 1/64
S21 • S22
LS 1071
1980

From which the following references:

A pine 10-inches in diameter bears S89° 49' W 8.7 feet distance.
Scribed "NS 1/64 S21 LS 1071 BT".

A pine 6-inches in diameter bears N56° 06' E 10.1 feet distance.
Scribed "NS 1/64 S22 LS 1071 BT".

Northwest-southwest one-sixty-fourth corner Section 22, Township 39 South, Range 3 West.

At the corner point I set a 2½-inch diameter iron post, buried 12-inches below ground level, with a 2½-inch diameter brass cap marked:

T39S R3W
S22
NW-SW 1/64
•
LS 1071
1980

From which the following references:

An oak 18-inches in diameter bears S77° 15' W 158.7 feet distance.
Scribed "NW-SW 1/64 LS 1071 BT".

A madrone 14-inches in diameter bears N44° 33' E 129.5 feet distance.
This tree is badly scarred, therefore, it was not scribed. An 8-inch bridge spike was placed in the base.

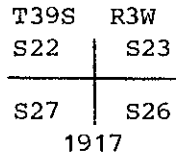
Center-west-west one-sixty-fourth corner Section 22, Township 39 South, Range 3 West.

At the corner point I set a 2½-inch diameter galvanized iron post with a 2½-inch diameter brass cap, protruding 2-inches above ground, marked:

T39S R3W
S22
C-W-W 1/64
•
LS 1071
1980

At the corner point I found a standard GLO brass cap on a 1½-inch iron post, protruding 12-inches above ground, marked:

U.S. General Land Office Survey



From which the following references:

A fir 10-inches in diameter bears N64° 24' W 26.3 feet distance with a double blaze; "CS BT" visible.

An oak stub 12-inches in diameter bears N42° 10' W 26.2 feet distance. This tree is broken off and rotted.

A fir snag 17-inches in diameter, 12 foot high, bears N25° 02' W 29.9 feet distance.

A madrone 8-inches in diameter bears N27° 29' E 46.6 feet distance with a double blaze; blazes partially rotten; "39 R3 S23" visible.

An oak 7-inches in diameter bears N34° 28' E 15.9 feet distance with a healed blaze.

An oak 8-inches in diameter bears S72° 23' E 14.7 feet distance with a healed blaze.

A madrone 10-inches in diameter bears S14° 55' E 12.3 feet distance with a double blaze; "CS BT" visible. Tree is forked at 2½ feet high.

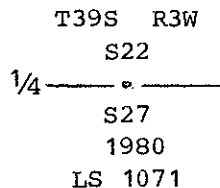
A madrone snag 6-inches in diameter bears S05° 28' E 11.9 feet distance with open blazes; "39S R3W S26 BT" visible.

A fir 22-inches in diameter bears S39° 54' W 22.8 feet distance with a healed blaze.

Corners Established This Survey

One-quarter corner common to Sections 22 and 27, Township 39 South, Range 3 West.

At the corner point determined by proportionate measure, I set a 2½-inch diameter galvanized iron post, buried 10-inches below ground line, with a 2½-inch diameter brass cap marked:



From which the following references:

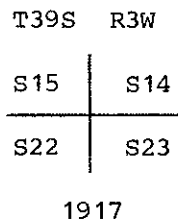
An oak 16-inches in diameter bears S63° 28' E 128.6 feet distance. Scribed "¼ S27 LS 1071 BT".

A pine 15-inches in diameter bears S20° 35' E 123.0 feet distance. Scribed "¼ S27 LS 1071 BT".

A pine 24-inches in diameter bears S05° 41' E 61.9 feet distance with an axed face; no scribe marks visible.

Section corner common to Sections 14, 15, 22 and 23, Township 39 South, Range 3 West.

At the corner point I found a standard GLO brass cap monument, protruding 12-inches above ground, marked:



From which the following references:

A fir 15-inches in diameter bears S31° 12' E 3.9 feet distance with a healed blaze.

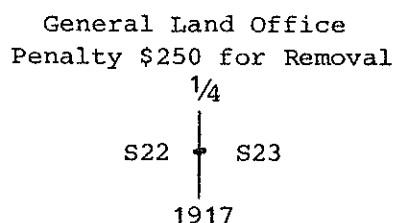
A fir 16-inches in diameter bears S66° 18' W 33.9 feet distance with a healed blaze.

A fir 15-inches in diameter bears N65° 40' W 38.3 feet distance with a healed blaze.

A fir 9-inches in diameter bears N45° 07' E 22.4 feet distance with a healed blaze.

One-quarter corner common to Sections 22 and 23, Township 39 South, Range 3 West.

At the corner point I found a standard GLO brass cap monument, protruding 11-inches above ground, marked:



From which the following references:

An oak 20-inches in diameter bears S61° 33' W 18.0 feet distance with scribing visible.

A fir 16-inches in diameter bears N25° 45' E 24.3 feet distance with a healed blaze.

A fir 15-inches in diameter bears S36° 26' W 9.6 feet distance with a healed blaze.

Section corner common to Sections 22, 23, 26 and 27, Township 39 South, Range 3 West.

At the corner point I found a 2½-inch diameter galvanized iron post with a 2½-inch diameter brass cap, protruding 4-inches above ground, marked:

T39S R3W

16		15
<hr/>		
21		22

CS
1980

From which the following references:

An oak 7-inches in diameter bears S20° 06' W 14.9 feet distance with a healed double blaze.

An oak snag 20-inches in diameter bears S71° 01' W 11.7 feet distance with a rotten double blaze.

An oak 6-inches in diameter bears N68° 39' W 38.3 feet distance with a double blaze; "CS BT" visible.

An oak snag 10-inches in diameter bears N29° 09' W 25.8 feet distance with a partially healed single blaze; "S" visible.

An oak 20-inches in diameter bears N05° 57' E 41.4 feet distance with a healed double blaze.

An oak 16-inches in diameter bears S 55° 08' E 20.3 feet distance with a healed double blaze.

An oak 10-inches in diameter bears S10° 22' E 56.4 feet distance with a healed double blaze.

West-West one-sixty-fourth corner common to Sections 15 and 22, Township 39 South, Range 3 West.

At the corner point I found a 5/8-inch diameter iron pin protruding 3-inches above ground as set by RLS 281 during Record Survey No. 2742, dated April 6, 1965.

From which the following references:

A fence corner (oak tree) bears N38° 54' 59" W 11.2 feet distance.

The southwest corner of property described in Jackson County Deed Record 76-06248, bears S00° 07' 27" E 120.0 feet distance.

One-quarter corner common to Sections 15 and 22, Township 39 South, Range 3 West.

At the corner point I found a 5/8-inch diameter iron pin protruding one-inch above ground as remonumented from original evidence by RLS 281 during Record Survey No. 2742, dated April 6, 1965.

From which the following references:

An oak 13-inches in diameter bears N39° 19' E 28.8 feet distance with a decayed open face.

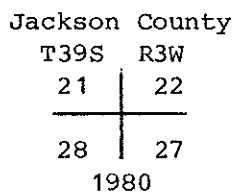
An oak 10-inches in diameter bears N69° 29' E 31.8 feet distance with a healed blaze.

EQUIPMENT USED: This survey was performed utilizing a Wild T-2 Theodolite, a Hewlett-Packard 3805-A and a Hewlett-Packard 3808 Electronic Distance Meters.

Corners Accepted For Control

Section corner common to Sections 21, 22, 27 and 28, Township 39 South, Range 3 West.

At the corner point I found a standard Jackson County Surveyors monument marked:



From which the following references:

A pine 21-inches in diameter bears S37° 38' E 64.5 feet distance with a healed double blaze.

An oak 12-inches in diameter bears N85° 48' W 65.2 feet distance with a healed double blaze.

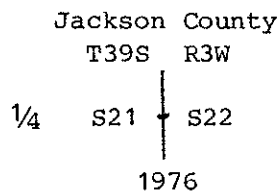
An oak 31-inches in diameter bears N27° 23' W 37.2 feet distance with a rotten single blaze.

An oak 28-inches in diameter bears N17° 29' E 105.4 feet distance.

An oak 17-inches in diameter bears N52° 29' E 94.1 feet distance.

One-quarter corner common to Sections 21 and 22, Township 39 South, Range 3 West.

At the corner point I found a 1½-inch diameter iron post with a 2¼-inch diameter brass cap, protruding 6-inches above ground, marked:



From which the following references:

An oak 19-inches in diameter bears N36° 42' E 38.4 feet distance with a rotten single blaze.

A pine 17-inches in diameter bears S19° 46' E 65.6 feet distance with a partially healed double blaze; "S BT" visible.

An oak 23-inches in diameter bears S32° 44' W 22.9 feet distance with a rotten partially healed single blaze.

A fir 15-inches in diameter bears N76° 20' W 39.4 feet distance with a healed double blaze.

Section corner common to Sections 15, 16, 21 and 22, Township 39 South, Range 3 West.

SURVEY NARRATIVE TO COMPLY WITH
PARAGRAPH 209.250 OREGON REVISED STATUTES

SURVEY FOR: Rogue River National Forest
P. O. Box 520
Medford, Oregon 97501

LOCATION: Section 22, Township 39 South, Range 3 West,
Willamette Meridian, Jackson County, Oregon.

BASIS OF BEARING: Solar observation taken near the southwest corner
Section 22.

PURPOSE: To establish corners and mark and post National
Forest boundaries within Section 22.

PROCEDURE: Prior to commencement of this survey, an investiga-
tion of all controlling section corners and quarter
section corners was made. All corners have been
recovered and remonumented by either the Government
Land Office (1917), P.L.S. No. 281 (Survey No.
2742), or Jackson County Surveyor, with the excep-
tion of the south one-quarter corner of Section 22.
The west one-sixteenth corner common to Sections 15
and 22 was not tied to as it was not necessary for
this survey; and its position, therefore, was not
verified. However, the west-west one-sixty-fourth
corner common to Sections 15 and 22 was tied to and
its position verified as part of a closed traverse.

With the required controlling corners verified, I
established a series of closed traverse lines tying
all corners to part of a closed traverse. From
this information a search area was determined for
the missing south one-quarter corner of Section 22,
and a diligent search for evidence proved unsuc-
cessful. Mr. William Straube, a long-time resident
of the area, was present during my search efforts.
He stated that when his father purchased the prop-
erty in 1929, a bearing tree for this corner was
present. However, in subsequent years of farming
and cultivating, the bearing tree was removed or
destroyed and no evidence remains today. Mr.
Straube was unable to give testimony as to the
exact location of the bearing tree when I requested
it. Therefore, while Mr. Straube was present, I
established the calculated proportion position for
this corner on the ground. He agreed that the pro-
portionate position was reasonably accurate in
relation to the original position, to the best of
his recollection. In addition, my remeasurement
from the calculated proportion position to a
topographic call of record in 1857 by Sewell Truax
east of the corner fit within five feet of record.
I, therefore, reestablished this corner by propor-
tionate measure.

True lines were posted with Carsonite fence posts
with National Forest boundary signs attached.
Trees along the true line were blazed and painted
with red tree marking paint.