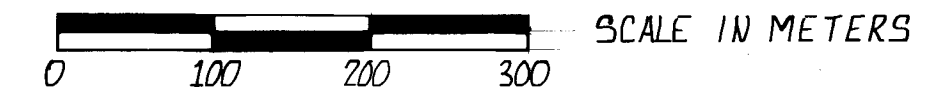
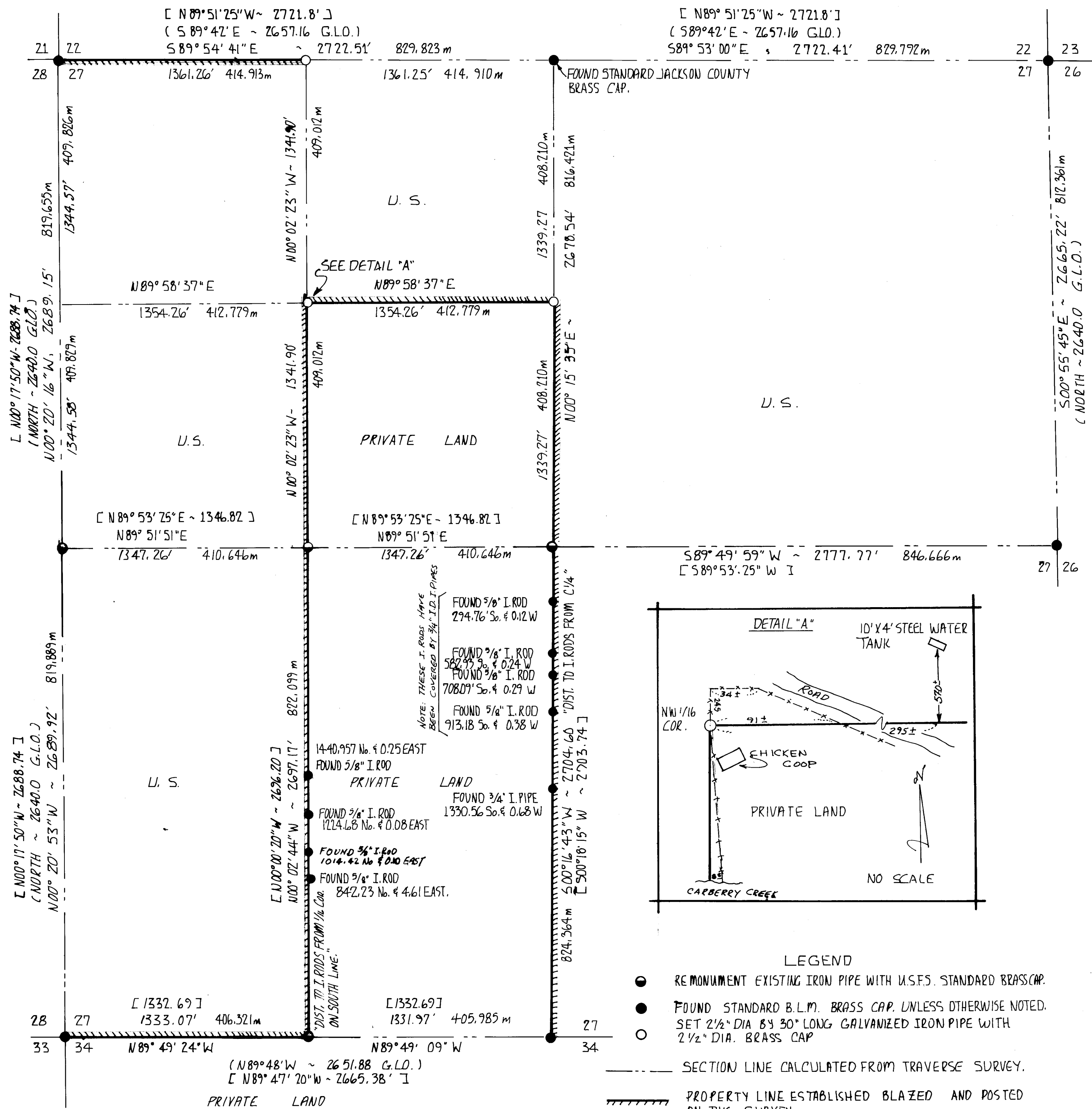


RECORD OF SURVEY
FOR

ROGUE RIVER NATIONAL FOREST - U.S.D.A.

P.O. BOX 520
MEDFORD, OREGON
AUGUST 26, 1980



1 METER = 3.280833 FEET

SURVEY METHOD - RANDOM TRAVERSE WITH THEODOLITE
300' TAPE AND ELECTRONIC DISTANCE METER.
BASIS OF BEARINGS - SOLAR OBSERVATION
DECLINATION 18° EAST

HISTORY OF SURVEYS IN SECTION 27
TOWNSHIP 40 SOUTH, RANGE 4 WEST, W.M.

THE EXTERIOR BOUNDARY LINES AND THE SUBDIVISION LINES OF TOWNSHIP 40 SOUTH, RANGE 4 WEST, W.M. WAS SURVEYED BY SAMUEL LACKLAND UNDER G.L.O. CONTRACT No. 429 DATED JANUARY 5, 1882.

THE NORTH 1/4 CORNER COMMON TO SECTIONS 22 & 27 WAS REMONUMENTED BY THE JACKSON COUNTY SURVEYORS OFFICE IN 1968. THIS CORNER WAS SET AS PART OF C.S. No. 3800 BUT MONUMENTED AS A COUNTY SURVEYORS CORNER. MARK BOYDEN MONUMENTED THE WEST 1/4 CORNER, THE CENTER 1/4 CORNER, THE CENTER-WEST 1/16 AND THE WEST 1/16 CORNER COMMON TO SECTIONS 27 & 34 IN COUNTY SURVEY No. 3800 DATED AUGUST 30, 1968.

THE BUREAU OF LAND MANAGEMENT REMONUMENTED THE OTHER CONTROLLING CORNERS IN 1966.

CERTIFICATE OF SURVEY

"I, H. LEON KENNEDY, A REGISTERED SURVEYOR IN THE STATE OF OREGON, HEREBY CERTIFY THAT THIS PLAT AND THE NOTES HEREON, OR ATTACHED, ARE A CORRECT REPRESENTATION OF A SURVEY I PERFORMED DURING MAY - AUGUST, 1980 FOR THE U.S. FOREST SERVICE, IN ACCORDANCE WITH THE STATUTES OF THE STATE OF OREGON AND WITH THE ARTICLES OF MY CONTRACT."

(S) H. LEON KENNEDY
REGISTERED LAND SURVEYOR
OREGON LICENSE # 981

REGISTERED
PROFESSIONAL
LAND SURVEYOR

H. Leon Kennedy
OREGON
JULY 14 1972
H. LEON KENNEDY
981

JACKSON COUNTY
RECEIVED
NOV 14 1980

EXAMINED AND ACCEPTED FOR
THE U.S. FOREST SERVICE
THIS 14th DAY OF November, 1980
C.O.R.

- LEGEND
- REMONUMENT EXISTING IRON PIPE WITH U.S.F.S. STANDARD BRASS CAP.
 - FOUND STANDARD B.L.M. BRASS CAP. UNLESS OTHERWISE NOTED.
 - SET 2 1/2" DIA BY 30" LONG GALVANIZED IRON PIPE WITH 2 1/2" DIA. BRASS CAP
 - SECTION LINE CALCULATED FROM TRAVERSE SURVEY.
 - ===== PROPERTY LINE ESTABLISHED BLAZED AND POSTED ON THIS SURVEY.
 - (G.L.O.) GOVERNMENT RECORD
 - [] MARK BOYDEN SURVEY RECORD

The Center-North 1/16 corner of Section 27, Township 40 South, Range 4 West, Willamette Meridian. At the corner location I set a 2½-inch diameter by 30-inch long iron pipe with a 2½-inch diameter brass cap marked:

T40S		R4W
	C	
N1/16	1	S27
	C	
	1980	
P.L.S.		981

From which I marked the following bearing trees:

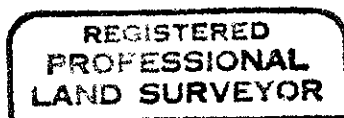
An 8" oak bears S75°06'W, 8.5ft. scribed "CN 1/16 S27 BT".
A 10" oak bears S19°27'E, 19.0 ft. scribed "CN 1/16 S27 BT".

All field books are on file with H. Leon Kennedy.

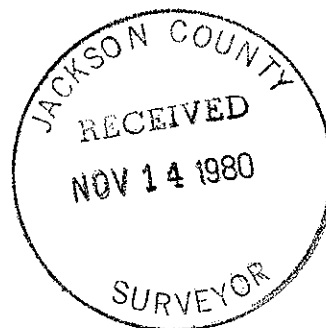
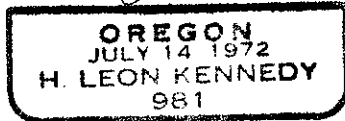
All Bearing trees marked on this survey are tagged with brass washer marked "L.S. 981".

August 28, 1980

H. Leon Kennedy
Registered Professional Land Surveyor
Oregon Certificate No. 981.



H. Leon Kennedy



T4OS R4W
C1/4 S27
1980
P.L.S. 981

From which I marked the following new bearing trees:

- A 5" fir bears N21°02'W15.0 ft. Scribed "C1/4 S27 BT". on a double blaze.
- A 4" fir bears N13°20'E27.0 ft. scribed "C1/4 S27 BT". on a double blaze.

The Center-West 1/16 corner of Section 27, Township 40 South, Range 4 West, Willamette Meridian. At the corner location I found a 1" by 36" iron pipe set by Mark Boyden as called for in County Survey No 3800. From which I found the following bearing trees:

- An 20" fir bears N40°E, 7.5 ft. with a healed blaze.
- A 14" fir bears N53°W, 35.0 ft. with a healed blaze.

We have accepted this corner as set by Mark Boyden, so I removed the 1" by 36" iron pipe and in it's place I set a 2½-inch by 30-inch iron pipe with a 2½-inch diameter brass cap marked:

T4OS R4W
C-W 1/16S27
1980
P.L.S. 981

Since the trees marked by Mark Boyden are healthy trees, I marked no new bearing trees.

CORNERS ESTABLISHED ON THIS SURVEY

The West 1/16 corner common to Sections 22 and 27, Township 40 South, Range 4 West, Willamette. At the corner location I set a 2½-inch diameter by 30-inch long iron pipe with a 2½-inch diameter brass cap marked:

T4OS R4W
W1/16 S22
S27
1980
P.L.S. 981

From which I marked the following bearing trees:

- A 7" pine bears N80°50'E, 10.3 ft. scribed "W1/16 S22 BT".
- A 12" live oak bears S83°40'W, 15.5 ft. scribed "W1/16 S27 BT".

The Northwest 1/16 corner of Section 27, Township 40 South, Range 4 West, Willamette Meridian. At the corner location I set a 2½-inch diameter by 30-inch long iron pipe with a 2½-inch diameter brass cap marked:

T4OS R4W
NW1/16 S27
1980
P.L.S. 981

From which I marked the following bearing trees:

- A 12" oak bears N62°13'W, 25.22 ft. Scribed "NW1/16 S27 BT".
- A 6" fir bears N5°45'E, 35.65 ft. scribed "NW1/16 S27 BT".
- An old rock mound bears N1°23'32"W, 28.03 ft.

An 8" fir bears N29°E, 11.8' A 1966 BT. with a healed
axe blaze.
A 10" fir bears S70°E, 21.9' A 1966 BT. with a healed
axe blaze.
A 28" pine Bears N76°E, 10.4' an original BT. with a
healed axe blaze.

The $\frac{1}{4}$ corner common to Sections 27 and 28, Township 40 South,
Range 4 West, Willamette Meridian. At the corner location I
found a 1" x 36" iron pipe set by Mark E. Boyden as called for
in County Survey No. 3800. From which I found the following:

A 16" fir bears S54°W, 32.4 ft. with a healed axe blaze.
A 15" fir bears S41°E, 42.5 ft. with a healed axe blaze.

There was some discussion among the Forest Service personnel
as to the correctness of this corner since it was established
by Mark Boyden by single proportionate measurement. Mark Boyden
and Harold Center reviewed the evidence at the corner site and
could not come up with enough evidence to support an original
corner. So we have accepted this corner as set by Mark Boyden.
I removed the 1" x 36" iron pipe and in it's place I set a
2 $\frac{1}{2}$ -inch diameter by 30-inch long iron pipe with a 2 $\frac{1}{2}$ -inch
diameter brass cap marked:

T40S		R4W
S28	$\frac{1}{4}$	S27
	1980	
PLS		981

Since the trees marked by Mark Boyden are healthy trees, I
marked no new bearing trees.

The West $\frac{1}{16}$ corner common to Sections 27 and 34, Township
40 South, Range 4 West, Willamette Meridian. At the corner
location I found a 1" by 36" iron pipe set by Mark Boyden as
called for in County Survey No 3800. From which I found the
bearing trees:

A 12" fir bears N16°54'E 20.2 ft. with a healed axe face.
A 14" fir bears S23°04'E, 16.2 ft. with a healed axe blaze.

We have accepted this corner as set by Mark Boyden, so I
removed the 1" x 36" iron pipe and in it's place I set a
2 $\frac{1}{2}$ -inch diameter by 30-inch long iron pipe with a 2 $\frac{1}{2}$ -inch
diameter brass cap marked:

T40S		R4W
W1/16	$\frac{27}{34}$	
	1980	
P.L.S.		981

Since the trees marked by Mark Boyden are healthy trees, I
marked no new bearing trees.

The Center $\frac{1}{4}$ corner of Section 27, Township 40 South, Range
4 West, Willamette. At the corner location I found a 1" by 36"
iron pipe set by Mark Boyden as called for in County Survey No.
3800. From which I found the following bearing trees:

An 18" pine bears S23°20'E 15.4 ft. with healed blaze.
A 12" pine bears S73°24'W 22.1 ft. with healed blaze.

We have accepted this corner as set by Mark Boyden, so I removed
the 1" x 36" iron pipe and in it's place I set a 2 $\frac{1}{2}$ -inch by
36" long iron pipe with a 2 $\frac{1}{2}$ -inch diameter brass cap marked:

U.S. DEPT FO INTERIOR
UNLAWFUL TO DISTURB
T40S R4W
S27 $\frac{1}{4}$ S26
1966
CADASTRAL SURVEY
BUREAU OF LAND MANAGEMENT

From which I found the following bearing trees:

- A 14" fir bears S22°E, 15.8 ft. an original BT. with healed blaze.
- A 14" fir snag bears S18°W, 17.8 ft. an original BT. no visible scribes.
- A 14" live oak bears S55°W, 39.0 ft. with an open single blaze scribed "RP".
- A 15" fir bears N80°E, 14.0 ft. a 1966 BT. with a healed blaze.
- A 8" Live Oak bears N32°W, 24.4 ft. a 1966 BT. with a partially healed blaze and visible scribes.

The $\frac{1}{4}$ corner common to Sections 27 and 34, Township 40 South Range 4 West, Willamette Meridian. At the corner location I found a standard B.L.M. Brass Cap marked:

U.S. DEPT. OF INTERIOR
UNLAWFUL TO DISTURB
S27
 $\frac{1}{4}$ S34 1966
CADASTRAL SURVEY
BUREAU OF LAND MANAGEMENT

From which I found the following bearing trees:

- A 24" fir bears S41°E, 51.5 ft. an original BT. with a healed blaze.
- A 16" fir bears North, 25.7 ft. a 1966 BT. with a partially healed face but no visible scribes.

The section corner common to Sections 27, 28, 33, and 34, Township 40 South, Range 4 West, Willamette Meridian. At the corner location I found a standard B.L.M. brass cap marked:

U.S. DEPT. OF INTERIOR
UNLAWFUL TO DISTURB
T40S R4W
S28 S27
S33 S34
1966
CADASTRAL SURVEY
BUREAU OF LAND MANAGEMENT

From which I found the following bearing trees:

- A 14 " pine bears S14°W, 42.7, an original BT. with an open blaze and visible scribes.
- A 16" pine stump bears N40°W, 40.5' an original BT. with a healed axe blaze.
- A 28" pine bears S53°E, 23.3' an original BT. with a healed axe blaze.
- An 18" fir bears S89°W, 56.0' A 1966 BT. with a healed axe blaze.
- A 16" pine bears N46°W, 22.0' A 1966 BT. with a healed axe blaze.

From which I found the following bearing Trees:

- A 24" pine stump bears N23°W, 76.6 ft. with an axe blaze (original BT).
- A 36" pine stump bears N21°E, 44.9 ft. with visible scribes (original B¹).
- A 14" Douglas Fir blowdown bears N38 W, 23.1 ft. with an axe blaze (1966 BT).
- A 20" Douglas Fir bears N32°E, 78.5ft. with a healed axe blaze (1966 BT).
- A 15" Douglas Fir bears N62°W, 42.55 ft. with upper and lower blaze scribed "C.S. BT".
- A 21" Ponderosa Pine bears S36½E, 196.0 with upper and lower blaze scribed "C.S. BT".
- A 15" fir bears S29 W, 50.8 ft. with healed blaze, a 1966 B.T.

The ¼ corner common to Sections 22 and 27, Township 40 South, Range 4 West, Willamette Meridian, Jackson County, Oregon. At the corner location I found a standard Jackson County Surveyor's Brass Cap marked:

Jackson County
T4OS R4W
¼S 22 1968
27

From which I found the following bearing trees:

- A 5" oak bears N28°W, 9.8 ft. with partly healed upper and lower blazes scribed "C.S. BT."
- A 3" oak bears N58°E, 12.5 ft. with partly healed upper and lower axe blazes scribed "C.S. BT". Distance to lower blaze.

The Section corner common to Sections 22, 23, 26, and 27, Township 40 South, Range 4 West, Willamette Meridian. At the corner location I found a standard BLM. Brass Cap marked:

U.S. DEPT. OF INTERIOR
UNLAWFUL TO DISTURB

T4OS		R4W
S22		S23
S27		S26

1966

CADASTRAL SURVEY
BUREAU OF LAND MANAGEMENT

From which I found the following bearing trees:

- A 12" down fir bears N76°E, 26.0 ft. an original BT.
- A 20" down fir bears. S17°E, 34.3 ft. an original Bt.
- A 30" fir bears S73°W, 56.0 ft. an original BT. with a healed single blaze.
- A 15" fir bears N62°W, 23.1 ft. an original B¹. with a healed single blaze.
- A 14" fir bears N45°E, 29.7 ft. a 1966 BT. with healed blaze.
- A 12" white fir bears S78°E, 35.6ft, a 1966 BT. with a healed blaze.
- A 12" fir bears S57°W, 27.7ft, a 1966 BT. with a healed blaze.
- A 18" fir bears N44°W, 54.8 ft. a 1966 BT. with a healed blaze.

The ¼ corner common to Sections 26 and 27, Township 40 South, Range 4 West, Willamette Meridian. At the corner position I found a standard B.L.M. brass cap marked:

NARRATIVE OF SURVEY TO CONFORM TO PARAGRAPH 209.250
OREGON REVISED STATUTES.

SURVEY FOR: Rogue River National Forest
P. O. Box 520
Medford, Oregon 97501

CONTRACT: Sutton Cadastral Survey
Contract No. 53-04H1-0-7885N

LOCATION: Section 27 Township 40 South, Range 4 West
Willamette Meridian, Jackson County, Oregon.

BASIS OF BEARINGS: Solar Observation.

PURPOSE: To establish property corners, and blaze
and post the National Forest Boundary Lines
in Section 27.

PROCEDURE: A search of the available records revealed
that the original survey was performed by
Samuel Lackland under G.L.O. Contract No.
429 dated January 5, 1882. The Bureau of
Land Management remonumented, from original
evidence, the northwest corner, the east 1/4
corner, the northeast corner, the south 1/4
corner and the south west corner of Section
27. These corners were remonumented by
Rollin D. Aanrud, Cadastral Surveyor, in 1966.
The Jackson County Surveyor's Office mon-
umented the north 1/4 corner in 1968. Mark
Boyden monumented the west 1/4 corner, the
center-west 1/16 corner and the center 1/4
corner of Section 27. He also monumented
the west 1/16 corner common to Sections 27
and 34.
With the above corner control established,
we ran a random traverse around Section 27.
We began our survey at the northwest corner
and surveyed in a clockwise direction and
closed back into our starting point with
a precision ratio of 1 in 26324. With the
control traverse run we were able to determine
that Mark Boyden's survey (C.S. 3800) was of
sufficient accuracy for us to accept his
corners. From this data we computed the
corner positions and offsets to true line
from our random points. We set iron mon-
uments at the corner positions and blazed
and posted the property lines.

CORNERS ACCEPTED FOR CONTROL

Section corner to Sections 21, 22, 27 & 28, Township 40 South,
Range 4 West, Willamette Meridian. At the corner location I
found a standard BLM brass cap marked:

U.S. Dept of Interior
Unlawful to disturb

T40S		R4W
S21		S22
S28		S27
1966		

Cadastral Survey
Bureau of Land Management