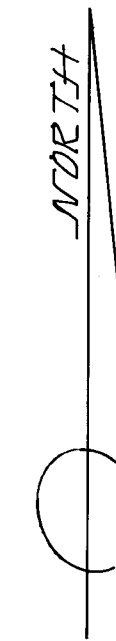
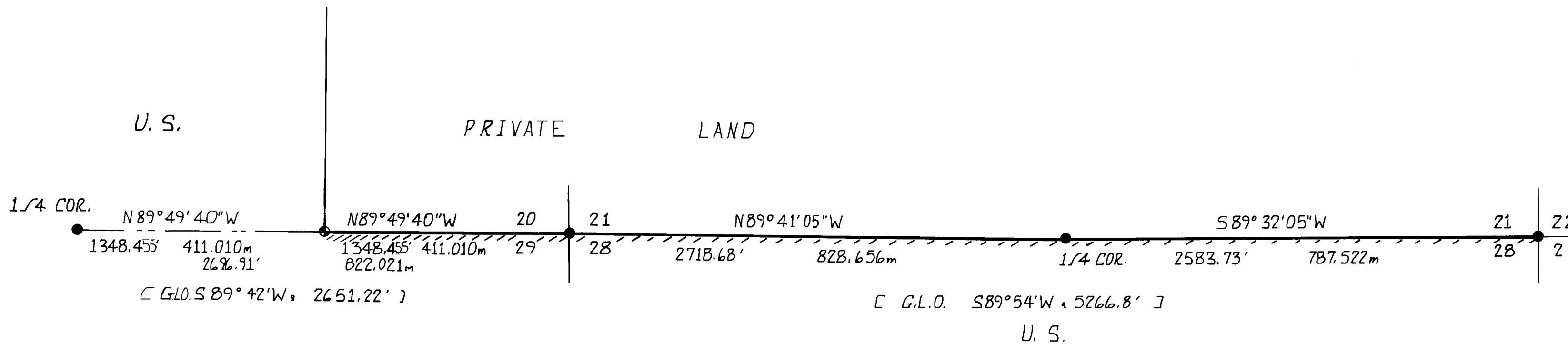


HISTORY OF SURVEYS IN SECTIONS 20 & 21
TOWNSHIP 40 SOUTH RANGE 4 WEST W.M.

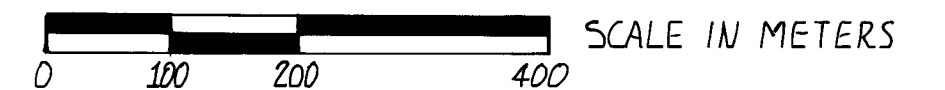
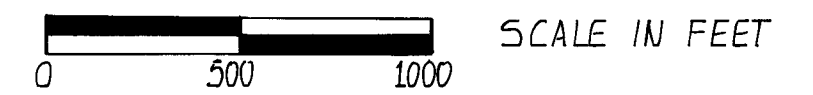
THE EXTERIOR BOUNDARY LINES AND THE SUBDIVISION LINES OF
TOWNSHIP 40 SOUTH, RANGE 4 WEST, W.M. WAS SURVEYED BY SAMUEL
LACKLAND UNDER G.L.O. CONTRACT No. 429 DATED JANUARY 5, 1882.

THE 1/4 CORNERS COMMON TO SECTIONS 21 & 28 AND 20 & 29 WERE
MONUMENTED BY THE JACKSON COUNTY SURVEYORS OFFICE IN 1979 AND
1980. THE REMAINING SECTION CORNERS WERE REMONUMENTED BY THE
BUREAU OF LAND MANAGEMENT IN 1966.

RECORD OF SURVEY
FOR
ROGUE RIVER NATIONAL FOREST - U.S.D.A.
P.O. BOX 520
MEDFORD, OREGON
AUGUST 18, 1980



BASIS OF BEARINGS - SOLAR OBSERVATION
DECLINATION 18° EAST



1 METER = 3.280833 FEET

SURVEY METHOD - RANDOM TRAVERSE WITH THEODOLITE,
300' TAPE AND ELECTRONIC DISTANCE METER.

LEGEND

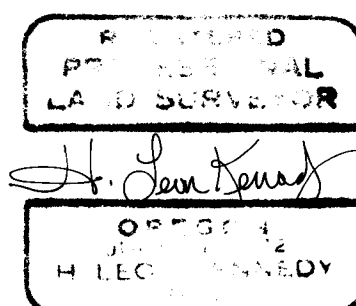
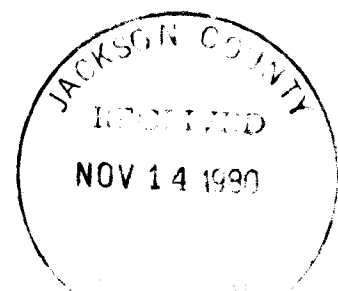
- FOUND STANDARD B.L.M. OR COUNTY SURVEYOR MONUMENT
SET 2 1/2" DIA. BY 30" LONG GALVANIZED IRON PIPE WITH
2 1/2" DIA. BRASS CAP
- — — SECTION LINE CALCULATED FROM TRAVERSE SURVEY
- ▨▨▨▨▨ PROPERTY LINE ESTABLISHED, BLAZED AND POSTED
ON THIS SURVEY.
- [G.L.O.] GOVERNMENT RECORD

CERTIFICATE OF SURVEY

"I, H. LEON KENNEDY, A REGISTERED SURVEYOR IN THE STATE OF
OREGON, HEREBY CERTIFY THAT THIS PLAT AND THE NOTES HEREON,
OR ATTACHED, ARE A CORRECT REPRESENTATION OF A SURVEY I
PERFORMED DURING MAY - AUGUST, 1980 FOR THE U.S. FOREST
SERVICE, IN ACCORDANCE WITH THE STATUTES OF THE STATE OF
OREGON AND WITH THE ARTICLES OF MY CONTRACT."

(S) H. LEON KENNEDY
REGISTERED LAND SURVEYOR
OREGON LICENSE # 981

EXAMINED AND ACCEPTED FOR
THE U.S. FOREST SERVICE
THIS 18th DAY OF November, 1980
[Signature] C.O.R.



A 12" Douglas Fir bears S45°W, 28.4 feet,

A 1966 BT with a healed axe blaze.

A 12" Douglas Fir bears N16°W, 19.8 feet,

A 1966 BT with a healed axe blaze.

The 1/4 corner common to Sections 20 and 29, Township 40 South, Range 4 East, Willamette Meridian.

At the corner location I found a standard Jackson County Surveyor's brass cap marked:

Jackson County
T40S R4W
1/4 S 20/29 1979

From which I found the following bearing trees:

A 32" White Fir blow down bears N25°W, 19.1 feet

An original BT with opened blaze scribed "1/4 S"

A 10" Douglas Fir bears N41 1/4°E, 115.6 feet with a pitched over blaze scribed "CS BT"

A 9" Douglas Fir bears S17°E, 54.7 feet with a pitched over blaze scribed "CS BT"

CORNERS ESTABLISHED ON THIS SURVEY

East 1/16 corner common to sections 20 and 29, Township 40 South, Range 4 West, Willamette Meridian.

At the corner location I set a 2 1/2 inch diameter by 30 inch long galvanized iron pipe with a 2 1/2 inch diameter brass cap marked:

T40S R4W
S20
E 1/16 S29
1980
PLS 981

From which I marked the following bearing trees:

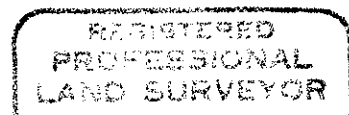
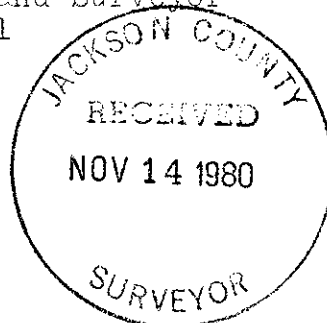
A 12" Yew wood bears S88°E, 26.2 feet. Scribed "E 1/16 S29 BT" on an upper and lower axe blaze and tagged with brass washer marked "LS 981"

A 10" Maple bears N70°W, 13.2 feet. Scribed "E 1/16 S20 BT" on an upper and lower axe blaze and tagged with a brass washer marked "LS 981"

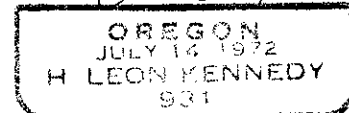
All field books are on file with H. Leon Kennedy, P.L.S.

August 18, 1980

H. Leon Kennedy
Registered Professional Land Surveyor
Oregon Certificate No. 981



H. Leon Kennedy



A 1" Douglas Fir bears N62°W, 42.55 ft. with upper & lower blaze scribed "C.S. BT"

A 21" Ponderosa pine bears S36½E, 196.0 ft. with upper & lower blaze scribed "C.S. BT"

The ¼ corner common to Sections 21 and 28, Township 40 South, Range 4 West, Meridian.

At the corner location I found a standard Jackson County Surveyor's Brass Cap marked:

Jackson County
T40S R4W
¼S 21/28 1980

From which I found the following bearing trees:

A stump hole depression bears N23°W, 24.4' (orig. BT)

A 48" fir stump remains bears S30°W, 18.5' (orig. BT)

A 14" Douglas Fir bears N66¾°W, 12.4 ft with upper and lower blaze scribed "CS BT"

A 13" Douglas Fir bears S24°W, 5.0 ft. with upper and lower blaze scribed "CS BT"

The section corner common to Sections 20, 21, 28 & 29, Township 40 South, Range 4 West, Willamette Meridian. At the corner location I found a standard BLM brass cap marked:

U.S. Dept. of Interior
Unlawful to disturb

T40S R4W
S20 | S21

S29 | S28

1966

Cadastral Survey
Bureau of Land Management

From which I found the following bearing trees:

A 6" fir stub bears N29°E, 38.9 feet,

An original BT with visible scribes

An 18" Douglas Fir bears S47°E, 57.4 ft,

An original BT with a healed axe blaze.

A 20" Douglas Fir snag bears S76°W, 26.4 feet,

An original BT with an open blaze and visible scribes.

A 26" Douglas Fir snag bears N78°W, 13.8',

An original BT with a healed axe blaze.

A 10" Douglas Fir snag bears N21°E, 30.4 Feet,

A 1966 BT with an open blaze and visible scribes

A 14" Douglas Fir bears S44°E, 24.4 feet,

A 1966 BT with a healed axe blaze

NARRATIVE OF SURVEY TO CONFORM TO PARAGRAPH 209.250
OREGON REVISED STATUTES

SURVEY FOR: Rogue River National Forest
P.O. Box 520
Medford, Oregon 97501

CONTRACT: Sutton Cadastral Survey
Contract No. 53-04H1-0-7885N

LOCATION: Section 20 and 21, Township 40 South, Range 4 West,
Willamette Meridian, Jackson County, Oregon

BASIS OF BEARINGS: Solar Observation

PURPOSE: To establish property corners, and blaze and
post the National Forest Boundary Lines along the
south lines of said Sections 20 and 21.

PROCEDURE: A search of the available records revealed that the
original survey was performed by Samuel Lackland
under G.L.O. Contract No. 429 Dated January 5, 1882.
A further examination of the records shows that
The Bureau of Land Management had remonumented
from original evidence the Southeast and Southwest
corner of Section 21. The Jackson County Surveyor
remonumented from original evidence the South $\frac{1}{4}$
Corner of Section 20 & the South $\frac{1}{4}$ Corner of
Section 21. With the above corner control established
we began a random traverse along the Forest Service
Boundary Lines running through each controlling
corner and setting control points at every point
required for posting. We began our survey at the
South $\frac{1}{4}$ corner of Section 22 and surveyed in a
clockwise direction and closed back into my starting
point with a precision ratio of 1 in 16667.
From this data I computed the corner positions and
offsets to true line from our random points. I
set iron monuments at the corner position and
blazed and posted the property lines.

CORNERS ACCEPTED FOR CONTROL

Section corner common to Sections 21, 22, 27 & 28, Township 40 South,
Range 4 West, Willamette Meridian. At the corner location I found
a standard BLM Brass Cap marked:

U. S. Dept. of Interior
Unlawful to disturb

T40S	R4W
S21	S22
S28	S27

1966
Cadastral Survey
Bureau of Land Management

From which I found the following bearing trees:

A 24" pine stump bears N23°W, 76.6 ft. with axe blaze
(original BT)

A 36" pine stump bears N21°E, 44.9 ft. with visible scribes
(original BT)

A 14" Douglas Fir blow down bears N38°W, 23.1 ft, with and
Axe Blaze (1966BT)

A 20" Douglas Fir bears N32°E, 78.5 ft. with a healed axe
blaze (1966 BT)

A 15" fir bears S29 W, 50.8 ft. with a healed blaze (1966 B.T.)