

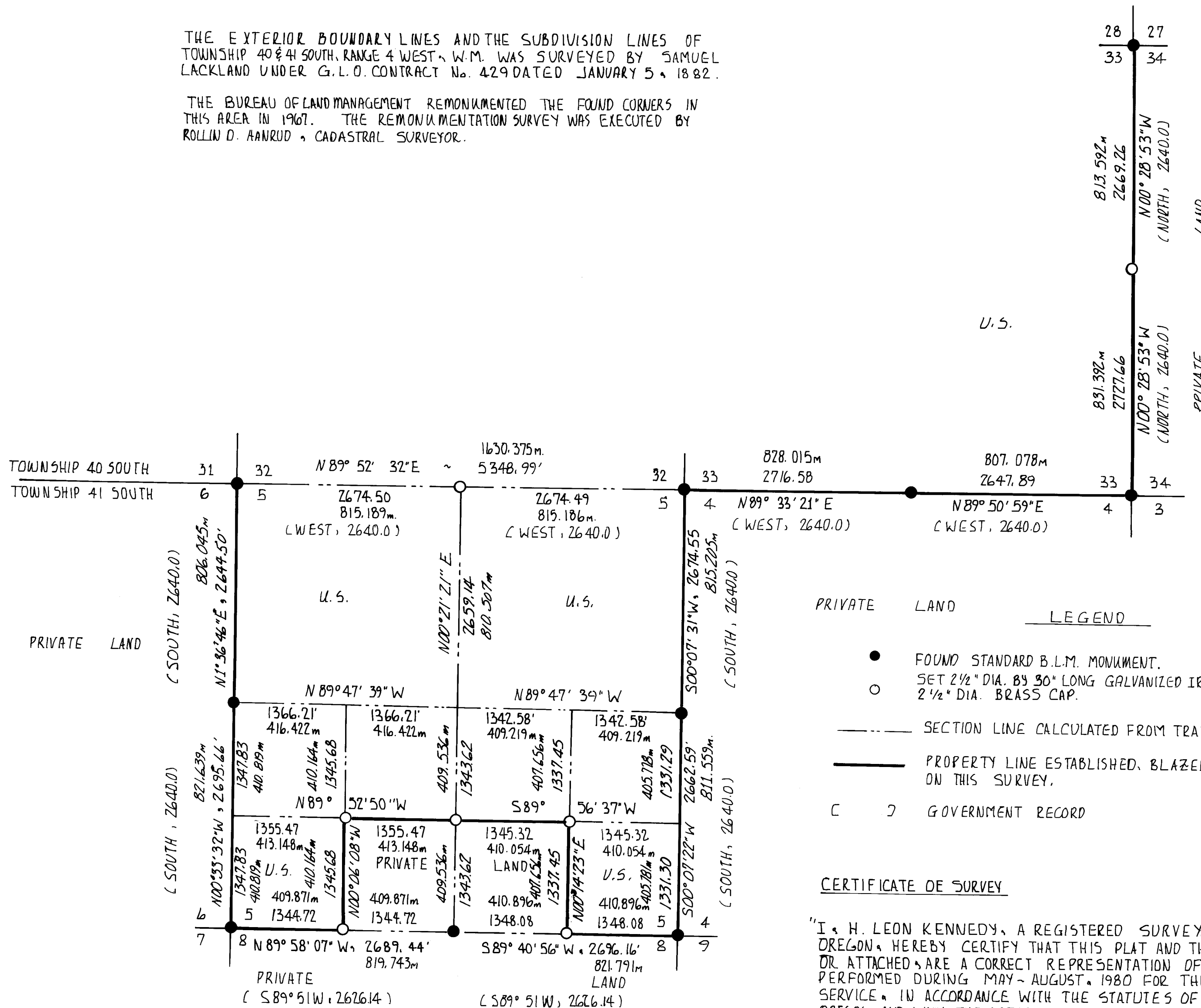
HISTORY OF SURVEYS

THE EXTERIOR BOUNDARY LINES AND THE SUBDIVISION LINES OF TOWNSHIP 40 & 41 SOUTH, RANGE 4 WEST, W.M. WAS SURVEYED BY SAMUEL LACKLAND UNDER G.L.O. CONTRACT No. 429 DATED JANUARY 5, 1882.

THE BUREAU OF LAND MANAGEMENT REMONUMENTED THE FOUND CORNERS IN THIS AREA IN 1967. THE REMONUMENTATION SURVEY WAS EXECUTED BY ROLLIN D. AARUD, CADASTRAL SURVEYOR.

RECORD OF SURVEY
FOR
ROGUE RIVER NATIONAL FOREST - U.S.D.A.

P.O. BOX 520
MEDFORD, OREGON
AUGUST 18, 1980



- LEGEND
- FOUND STANDARD B.L.M. MONUMENT.
 - SET 2 1/2\" DIA. BY 30\" LONG GALVANIZED IRON PIPE WITH 2 1/2\" DIA. BRASS CAP.
 - SECTION LINE CALCULATED FROM TRAVERSE SURVEY
 - PROPERTY LINE ESTABLISHED, BLAZED AND POSTED ON THIS SURVEY.
 - [] GOVERNMENT RECORD

CERTIFICATE OF SURVEY

"I, H. LEON KENNEDY, A REGISTERED SURVEYOR IN THE STATE OF OREGON, HEREBY CERTIFY THAT THIS PLAT AND THE NOTES HEREON, OR ATTACHED, ARE A CORRECT REPRESENTATION OF A SURVEY I PERFORMED DURING MAY - AUGUST, 1980 FOR THE U.S. FOREST SERVICE. IN ACCORDANCE WITH THE STATUTES OF THE STATE OF OREGON AND WITH THE ARTICLES OF MY CONTRACT."

(S) H. LEON KENNEDY
REGISTERED LAND SURVEYOR
OREGON LICENSE # 981

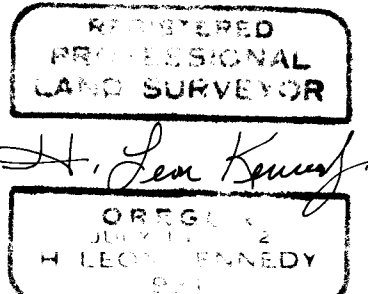
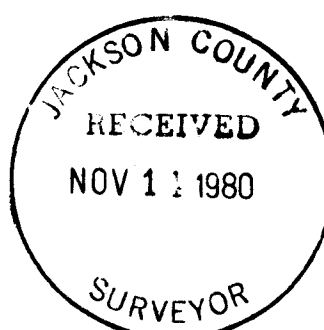


BASIS OF BEARINGS - SOLAR OBSERVATION
DECLINATION 18° EAST



1 METER = 3.280833 FEET

SURVEY METHOD - RANDOM TRAVERSE WITH THEODOLITE, 300' TAPE AND ELECTRONIC DISTANCE METER.



EXAMINED AND ACCEPTED FOR
THE U.S. FOREST SERVICE
THIS 14th DAY OF November, 1980
[Signature] C.O.R.

T40S		R4W
	$\frac{1}{4}$	
S33		S34
	1980	
PLS		981

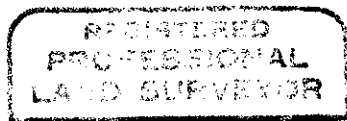
From which I marked the following bearing trees:

6" Madrone bears N30 40'E, 16.5' scribed " $\frac{1}{4}$ S34 BT"
24" Sugar Pine bears N85 35'W, 58.4' scribed " $\frac{1}{4}$ S33 BT"

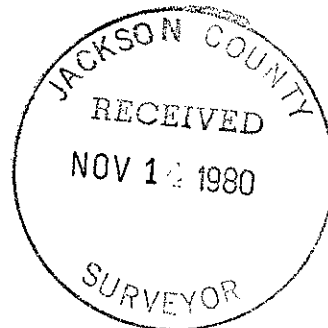
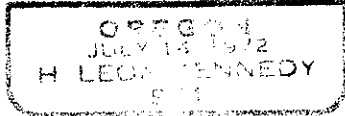
All field books are on file with H. Leon Kennedy.

August 18, 1980

H. Leon Kennedy
Registered Professional Land Surveyor
Oregon Certificate No. 981



H. Leon Kennedy



Brass Cap marked:

T41S	C	R4W
S1/16		S5
	C	
	1980	
PLS		981

From which I marked the following bearing trees:

- A 6" White Fir bears N16°W, 3.3' scribed "CS 1/16 S5 BT" on a double axe blaze.
- A 24" Douglas Fir bears S40°30'E, 4.2' scribed "CS 1/16 S5 BT" on a double axe blaze.

The southeast 1/16 corner of Section 5, Township 41 South, Range 4 West, Willamette Meridian. At the corner location I set a 2½ inch diameter by 30 inch long iron pipe with a 2½ inch Brass Cap marked:

T41S	R4W
SE 1/16	S5
	1980
PLS	981

From which I marked the following bearing trees:

- A 9" Douglas Fir bears N46°W, 17.2' scribed "SE 1/16 S5 BT" on a double axe blaze.
- A 5" Douglas Fir bears S30°W, 16.0' scribed "SE 1/16 S5 BT" on a double axe blaze

The ¼ corner common to Sections 33 and 34, Township 40 South, Range 4 West, Willamette Meridian. This corner was determined to be LOST when we were unable to find the original monument or verify the location of the original bearing trees. There was a fire in this area several years after the original survey and killed virtually all of the pine and live oaks. The corner was re-established by placing it at its proportioned distance to the north and south edge of the rock slide called for in the original notes. The edges of the rock slide are quite distinct. The following proportions were used to reset the corners:

$$\frac{5397.071 \text{ (Total Length)}}{5280.0 \text{ (Record Length)}} = \frac{X}{678.48 \text{ (Record length of slide)}}$$

$$X \text{ (Proportioned length of slide)} = 693.52$$

$$\text{Measured length of slide} = 691.11$$

Location of ¼ corner

$$\frac{5397.071}{5280.0} = \frac{X}{117.48 \text{ (Record length from ¼ cor. to north edge of slide)}}$$

$$X = 120.085 \text{ proportioned dist. from north edge of slide.}$$

By using this method to reset the corner we feel that we are closer to the original position of the ¼ corner than we would be if we had used single-proportion measurement from the adjacent section corners.

At the corner location I set a 2½ inch diameter by 30 inch long iron pipe with a 2½ inch diameter Brass Cap marked:

A 6" Douglas Fir bears S76°W, 22.2' scribed "¼ S5 BT" on double blaze.
 A 15" Douglas Fir bears N56°E, 30.7' scribed "¼ S32 BT" on double blaze. This tree has old line blazes on North South and East sides.

This corner lies approximately 70 feet above main forest service road.

The East 1/16 Corner common to Section 5 and 8, Township 41 South, Range 4 West, Willamette Meridian. At the corner location I set a 2½ inch diameter by 30 inch long iron pipe with a 2½ inch Brass Cap marked:

T41S	R4W
E 1/16	<u>S5</u>
	S8
1980	
PLS	981

From which I marked the following bearing trees:

A 10" Ponderosa Pine bears N85°30' E, 22.3' scribed "E 1/16 S5 BT" on a double blaze.
 A 8" Douglas Fir bears S7°W, 23.3' scribed "E 1/16 S8 BT" on a double axe blaze.

The West 1/16 Corner common to Sections 5 and 8, Township 41 South, Range 4 West, Willamette Meridian. At the corner location I set a 2½ inch diameter by 30 inch long iron pipe with a 2½ inch Brass Cap marked:

T41S	R4W
W 1/16	<u>S5</u>
	S8
1980	
PLS	981

From which I marked the following bearing trees:

A 8" Douglas Fir bears S41°20'W, 35.6' scribed "W 1/16 S8 BT" on a double axe blaze.
 A 6" Ponderosa Pine bears N62°40'W, 14.0' scribed "W 1/16 S5 BT" on a double axe blaze.

The southwest 1/16 corner of Section 5, Township 41 South, Range 4 East, Willamette Meridian. At the corner location I set a 2½ inch diameter by 30 inch long iron pipe with a 2½ inch Brass Cap marked:

T41S	R4W
SW 1/16	S5
1980	
PLS	981

From which I marked the following bearing trees:

An 8" pencil cedar bears N11°E, 10.3' scribed "SW 1/16 S5 BT" on a double axe blaze
 A 12" Douglas Fir bears S27°30'W, 34.4' scribed "SW 1/16 S5 BT" on a double axe blaze.

The center-south 1/16 corner of Section 5, Township 41 South, Range 4 West, Willamette Meridian. At the corner location I set a 2½ inch diameter by 30 inch long iron pipe with a 2½ inch

From which I found the following bearing trees:

- A 16" fir bears N32°E, 5.3'
- An original BT with open blaze and visible scribes.
- A 12" fir bears N63°E, 33.0'
- A 1966 BT with a healed axe face.
- An 18" fir bears S42°E, 26.9'
- A 1966 BT with an open blaze and visible scribes.
- An 18" fir bears S56°W, 53.3'
- A 1966 BT with an open blaze and visible scribes.

The corner monument was under a 36" fir log and was very crooked and loose. We cut out the log, reset the monument and constructed a rock mound around monument.

The Section corner common to Sections 27,28, 33 and 34, Township 40 South, Range 4 West, Willamette Meridian. At the corner location I found a standard BLM Brass Cap marked:

U.S. DEPT. OF INTERIOR
UNLAWFUL TO DISTURB

T40S	R4W
S28	S27
S33	S34

1966
CADASTRAL SURVEY
BUREAU OF LAND MANAGEMENT

From which I found the following bearing trees:

- A 14" pine bears S6°37'W, 42.7' an original Bt with an open blaze and visible scribes.
- A 16" pine stump bears N40°W, 40.5' An original BT with a healed axe blaze
- A 28" pine bears S53°E, 23.3' An original BT with a healed axe blaze.
- An 18" fir bears S87°W, 56.0' A 1966 Bt with a healed axe blaze.
- A 16" pine bears N48°W, 22.0' A 1966 BT with a healed axe blaze.
- An 8" fir bears N27³/₄°E, 11.8' A 1966 BT with a healed axe blaze.
- A 10" fir bears S71°20'E, 21.9' A 1966 BT with a healed axe blaze.
- A 28" pine brs N77³/₄°E 10.4' orig. BT w/healed axe blaze.

CORNERS ESTABLISHED ON THIS SURVEY

The $\frac{1}{4}$ corner common to Sections 32, Township 40 South, and Section 5, Township 41 South, Range 4 West, Willamette Meridian. This corner was determined to be a lost corner since we were unable to find the original monument or bearing trees. The corner was established by single proportional measure between the section corners to the East and West. This position checks within reason with the calls given in the original survey notes. The location of the proportionate corner lies in an area that has been extensively cat logged. One of the trees chosen as a new bearing tree has old axe line blazes on the north, south and east sides, which indicates that the proportionate corner is correctly located. At the corner location I set a 2 $\frac{1}{2}$ inch diameter by 30 inch long galvanized iron pipe with a 2 $\frac{1}{2}$ inch diameter brass cap marked:

T40S	R4W
$\frac{1}{4}$	S32
	S5
	T41S
	1980

PLS 981

From which I marked the following bearing trees:

The Section Corner common to Sections 5 and 4, Township 41 South, Range 4 West, and Sections 32 and 33, Township 40 South, Range 4 West, Willamette Meridian. At the corner location I found a standard B.L.M. Brass Cap marked:

U.S. DEPT. OF INTERIOR
UNLAWFUL TO DISTURB

T40S		R4W
S31		S32
S6		S5

T41S
1966
CADASTRAL SURVEY
BUREAU OF LAND MANAGEMENT

From which I found the following bearing trees:

- A rotted White Fir stump bears S71°E, 17.8.
- An original BT with no visible scribes.
- A 12" White Fir bears N50°E, 48.2'
- A 1966 BT with a healed axe blaze.
- A 12" fir bears S43°E, 35.6'
- A 1966 BT with a healed axe blaze.
- A 12" fir bears S45°W, 28.4'
- A 1966 Bt with a healed axe blaze.
- A 10" fir bears N40°W, 35.8.
- A 1966 BT with a healed axe blaze.

The $\frac{1}{4}$ corner common to Section 33, Township 41 South, Range 4 West, Willamette Meridian. At the corner location I found a standard B.L.M. Brass Cap marked:

U.S. DEPT. OF INTERIOR
UNLAWFUL TO DISTURB

T40S		R4W
$\frac{1}{4}$		S 33
		S 4

T41S
1966
CADASTRAL SURVEY
BUREAU OF LAND MANAGEMENT

From which I found the following bearing trees:

- A down and rotted fir bears N84°E, 13.9'
- An original BT
- A 8" Live Oak bears S37°W, 13.9'
- A 1966 BT with open face and visible scribes
- A 14" fir bears N45°W, 3.3'
- A 1966 BT with a healed axe blaze.

The section corner common to Sections 33 and 34, Township 40 South, Range 4 West, and Sections 3 and 4, Township 41 South, Range 4 West, Willamette Meridian. At the corner location I found a standard B.L.M. Brass Cap marked:

U.S. Dept. of Interior
Unlawful to Disturb

T40S		R4W
S33		S34
S4		S3

T41S
1966
Cadastral Survey
Bureau of Land Management

standard B.L.M. Brass Cap marked:

U.S. DEPT. OF INTERIOR
UNLAWFUL TO DISTURB

T41S R4W

1/4 S5

 S8

1967
Cadastral Survey
Bureau of Land Management

From which I found the following bearing trees:

- An oak stub bears N72°W, 23.8' original BT
- A 20" Pine bears N57°E, 5.3'
- A 1967 BT with a healed axe blaze.
- A 18" Pine bears S57°W, 70.6'
- A 1967 BT with a healed axe blaze.

The section corner common to Sections, 5,6,7 & 8, Township 41 South, Range 4 West, Willamette Meridian. At the corner location I found a standard B.L.M. Brass Cap marked:

U.S. DEPT. OF INTERIOR
UNLAWFUL TO DISTURB

T41S R4W

S6 S5

S7 S8

1967
CADASTRAL SURVEY
BUREAU OF LAND MANAGEMENT

From which I found the following bearing trees:

- A Maple stub bears S43°E, 21.8' an original BT
- An Alder stub bears S52°W, 11.9' an original BT
- A 12" Fir bears N82°E, 70.6'
- A 1967 BT with a healed axe blaze.
- A 14" White Fir bears S43°E, 7.3'
- A 1967 BT with a healed axe blaze.
- A 12" Fir bears S60°W, 19.0'
- A 1967 BT with a healed axe blaze.
- A 14" Fir bears N68°W, 14.2'
- A 1967 BT with a healed axe blaze.

The 1/4 Corner common to Sections 5 and 6, Township 41 South, Range 4 West, Willamette Meridian. At the corner location, I found a standard B.L.M. Brass Cap marked:

U.S. DEPT. OF INTERIOR
UNLAWFUL TO DISTURB

T41S R4W

S6 S5
 |
 1/4

1967
CADASTRAL SURVEY
BUREAU OF LAND MANAGEMENT

From which I found the following bearing trees:

- A 42" pine bears N89°W, 15.2' to blaze.
- An original BT with open blaze scribed "1/4S BT"
- A 10" fir bears N22°30' W, 31.0'
- A 1967 BT with a healed axe face.
- An 8" fir bears S17°E, 39.6'
- A 1967 BT with a healed axe face.

From which I found the following bearing trees:

- A 16" Oak bears N7°E, 40.9'
- An original BT with chopped out face & visible scribes
- A 30" Pine blowdown bears N 62°W, 29.0' an original BT.
- A 20" Fir bears N80°E, 27.7'
- A 1966 BT with a healed axe blaze
- A 15" Fir bears S53°E, 24.4'
- A 1966 BT with a healed axe blaze.
- A 16" Pine bears S25°W, 44.9'
- A 1966 BT with an open blaze and visible scribes.
- A 18" Fir bears N55°W, 64.0'
- A 1966 BT with a healed axe blaze.
- A 14" Oak bears S9°W, 39.6' An R.P.
- A 16" Sugar Pine bears S65°W, 42.9' An R.P.

The $\frac{1}{4}$ Corner common to Sections 4 & 5, Township 41 South, Range 4 West, Willamette Meridian. At the corner location I found a standard BLM Brass Cap marked:

U.S. DEPT. OF INTERIOR
UNLAWFUL TO DISTURB

T41S R4W

S5 $\frac{1}{4}$ S4

1967

CADASTRAL SURVEY
BUREAU OF LAND MANAGEMENT

From which I found the following bearing trees:

- An 22" Fir bears N14°E, 9.9'
- A 1967 BT with a healed single axe blaze
- A 12" Fir snag bears S75°W, 53.5'
- A 1967 BT with a open blaze scribed " $\frac{1}{4}$ S BT"

From which I marked a new bearing tree marked as follows:

- A 8" fir bears N88 23'W, 47.6 ft. scribed " $\frac{1}{4}$ S5 B.T."

The section corner common to Sections 4,5,8 & 9, Township 41 South, Range 4 West, Willamette Meridian. At the corner location I found a standard B.L.M. Brass Cap marked:

U.S. DEPT. OF INTERIOR
UNLAWFUL TO DISTURB

T41S R4W

S5 S4
S8 S9

1967

CADASTRAL SURVEY
BUREAU OF LAND MANAGEMENT

From which I found the following bearing trees:

- A 14" Oak bears N30°E, 7.5'
- An original BT with an open & deteriorated blaze.
- A 32" Sugar Pine bears S8°45'E, 10.4'
- An original BT with a healed axe face.
- A 13" Oak bears N68°30' W, 61.4'
- An original BT with a healed axe face.
- A 24" Ponderosa Pine snag bears N30°E, 46.8'
- A 1967 BT with an open blaze and visible scribes.
- A 13" Pine bears S76°W, 96.1'
- A 1967 BT with a healed axe blaze.

The $\frac{1}{4}$ corner common to Sections 5 & 8, Township 41 South, Range 4 West, Willamette Meridian. At the corner location I found a

NARRATIVE OF SURVEY TO CONFORM TO PARAGRAPH 209.250
OREGON REVISED STATUTES

SURVEY FOR: Rogue River National Forest
P.O. Box 520
Medford, Oregon 97501

CONTRACT: Sutton Cadastral Survey
Contract No. 53-04H1-0-7885N

LOCATION: Section 33, Township 40 South, Range 4 West,
and Section 5, Township 41 South, Range 4 West,
Willamette Meridian, Jackson County, Oregon

BASIS OF BEARING: Solar Observation

PURPOSE: To establish property corners, and blaze
and post the National Forest Boundary
Lines in the above mentioned sections.

PROCEDURE: A search of the available records revealed
that the original surveys in this area was
performed by Samuel Lackland under G.L.O.
Contract No 429 dated January 5, 1882. A
further examination of the records shows
that the Bureau of Land Management had
remonumented from original evidence all of
the necessary controlling corners except
the North $\frac{1}{4}$ corner of Section 5 and the
East $\frac{1}{4}$ corner of Section 33 which were
not found.
With the above corner control established
we ran a random traverse along the Forest
Service Boundary Lines running through each
controlling corner and setting control
points at every point required for posting.
We began the first loop of our survey at the
Northeast corner of Section 5 and surveyed
in a clockwise direction around Section 5
and closed back into our starting point
with a precision ratio of 1 in 38470.
We began the second loop of our survey at
the Northeast corner of Section 5 and
surveyed in a counter clockwise direction
around the South and East lines of Section
33 and closed back into our starting point
with a precision ratio of 1 in 8176.
From this data we computed the corner
positions and offsets to true line from
our random points. We set iron monuments
at the corner positions and blazed and
posted the property lines.

CORNERS ACCEPTED FOR CONTROL

Section corner common to Sections 31 and 32, Township 40 South,
Range 4 West and Sections 4 and 5, Township 41 South, Range 4 West,
Willamette Meridian. At the corner location I found a standard
B.L.M. Brass Cap marked:

U.S. DEPT. OF INTERIOR
UNLAWFUL TO DISTURB

T40S	R4W
S32	S33
S5	S4

1966

T41S
Cadastral Survey
Bureau of Land Management