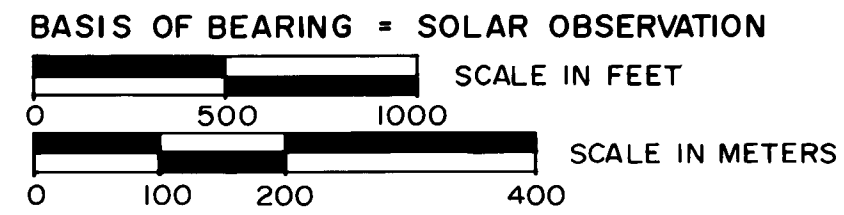
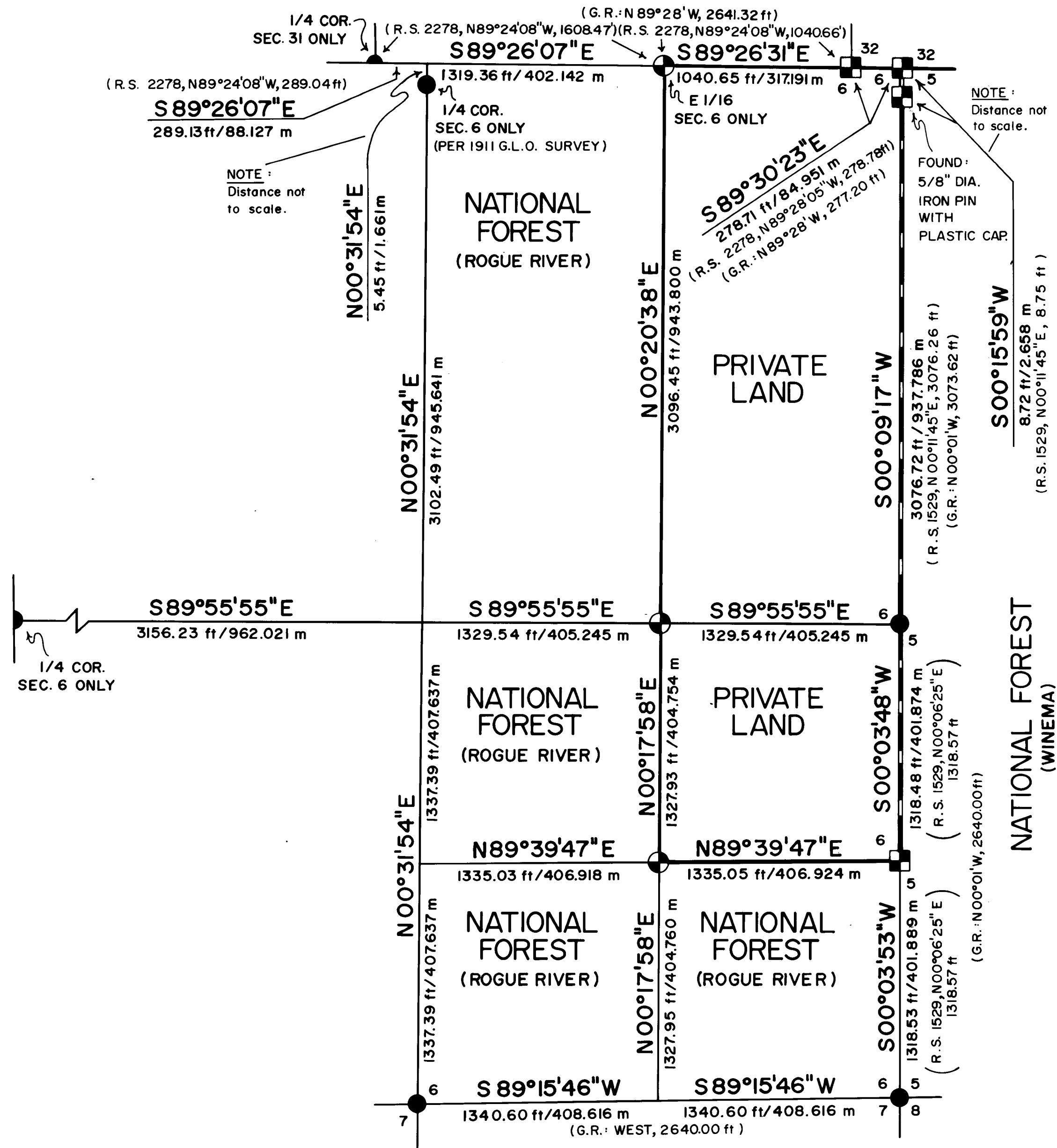


MAP OF SURVEY FOR ROGUE RIVER NATIONAL FOREST

P.O. BOX 520
MEDFORD, OREGON
AUGUST 15, 1980



HISTORY OF SURVEYS

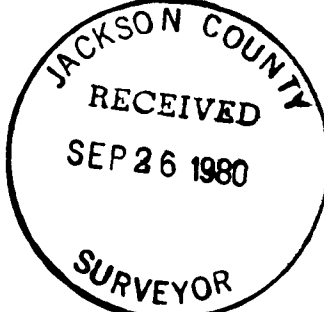
THE WEST LINE OF SECTION 6 WAS ORIGINALLY ESTABLISHED BY APPLIGATE AND McCALL UNDER CONTRACT NO. 144 DATED APRIL 12, 1871. THE EAST AND SOUTH LINES WERE ORIGINALLY ESTABLISHED AND THE WEST AND NORTH LINES WERE RETRACED AND RESURVEYED BY FRED MENSCH. THAT SURVEY WAS APPROVED AUGUST 7, 1912. THE EAST HALF OF THE NORTH LINE AND THE ENTIRE EAST LINE WERE RETRACED BY GEORGE R. BURRELL, REGISTERED PROFESSIONAL LAND SURVEYOR NO. 638, WITH THE RESULTS OF THOSE SURVEYS RECORDED AS DOCUMENTS NO. 2278 AND 1529 ON FILE WITH THE KLAMATH COUNTY SURVEYOR. ALL CONTROLLING CORNERS HAD BEEN REMONUMENTED BY THE BUREAU OF LAND MANAGEMENT OR SURVEYOR BURRELL. NO OTHER SURVEYS OF RECORD WERE NOTED.

LEGEND

- FOUND STANDARD BLM OR COUNTY SURVEYOR MONUMENT.
- ⊕ SET 2 1/2" DIA. X 30" LG. IRON POST WITH 2 1/2" BRASS CAP (SET BY R.L.S. 1071).
- ⊞ FOUND 2 1/2" DIA. IRON POST WITH 3" BRASS CAP UNLESS OTHERWISE NOTED. (SET BY R.L.S. 638).
- G.R. GOVERNMENT RECORD.
- R.S. RECORD SURVEY (REFERENCE RECORD NO. 2278 OR NO. 1529).
- SECTION LINE CALCULATED FROM TRAVERSE SURVEY.
- PROPERTY LINE ESTABLISHED AND POSTED THIS SURVEY.
- PROPERTY LINE PREVIOUSLY ESTABLISHED, RETRACED AND MAINTAINED THIS SURVEY.

CERTIFICATE OF SURVEY

I, HAROLD L. CENTER, REGISTRATION NO. 1071 REGISTERED PROFESSIONAL LAND SURVEYOR, STATE OF OREGON, HEREBY CERTIFY THAT THIS MAP CORRECTLY REPRESENTS A SURVEY MADE BY ME OR UNDER MY DIRECTION IN CONFORMANCE WITH THE LAWS OF THE STATE OF OREGON, AT THE REQUEST OF THE U.S. FOREST SERVICE.



U. S. DEPARTMENT OF AGRICULTURE FOREST SERVICE	
REGION 6	ROGUE RIVER NAT'L. FOREST
DEPENDENT RESURVEY and SECTION SUBDIVISION SEC. 6, T.38 S., R.5E.,W.M. KLAMATH COUNTY, OREGON	
REVIEWED BY <i>John McDonald</i>	DATE <i>9/14/80</i>
REVIEWED BY <i>Dick Hathaway</i>	DATE <i>9/19/80</i>

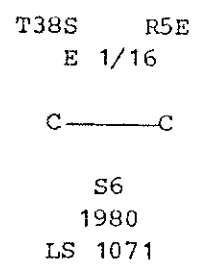
From which the following references:

- A 11-inch diameter fir bears N 53° 21' W 29.20 feet distance. Healed blaze.
- A 28-inch diameter fir bears N 36° 51' W 22.50 feet distance. Healed blaze.
- A 14-inch diameter fir bears N 40° 50' E 37.10 feet distance. Scribe visible. This tree is now dead.
- A 10-inch diameter fir bears N 57° 53' E 32.20 feet distance. Healed blaze.

CORNERS ESTABLISHED THIS SURVEY

Centereast one-sixteenth corner Section 6, Township 38 South, Range 5 East.

At the corner point I set a 2½-inch diameter galvanized iron post with a 2½-inch diameter brass cap marked:

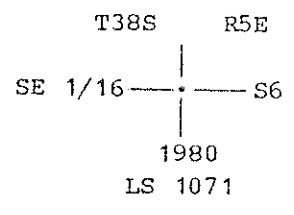


From which the following references:

- A 8-inch diameter fir bears S 22° 00' W 26.70 feet distance. Scribed CE 1/16 S6 LS 1071 BT.
- A 32-inch diameter fir bears N 71° 25' W 36.30 feet distance. Scribed CE 1/16 S6 LS 1071 BT.

Southeast one-sixteenth corner Section 6, Township 38 South, Range 5 East.

At the corner point I set a 2½-inch diameter galvanized iron post with a 2½-inch diameter brass cap marked:

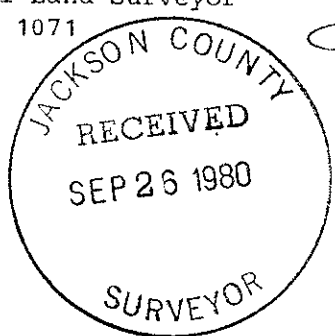


From which the following references:

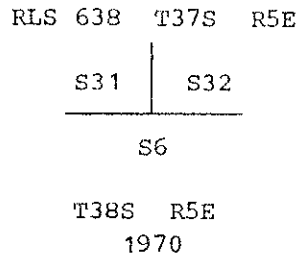
- A 11-inch diameter fir bears S 31° 11' E 88.50 feet distance. Scribed SE 1/16 S6 LS 1071 BT.
- A 25-inch diameter fir bears N 62° 37' W 41.90 feet distance. Scribed SE 1/16 S6 LS 1071 BT.

August 15, 1980

HAROLD L. CENTER
Registered Professional Land Surveyor
Oregon Certificate No. 1071



At the corner point I found a 2½-inch diameter iron post with a 3-inch diameter brass cap marked:



From which the following references:

- A 33-inch diameter fir bears S 62° 38' E 32.70 feet distance. Healed blaze.
- A 27-inch diameter fir bears S 45° 07' W 7.30 feet distance. Healed blaze.
- A 11-inch diameter fir bears N 73° 36' W 43.00 feet distance. Scribe visible.
- A 19-inch diameter fir bears N 83° 36' E 35.50 feet distance. Scribe visible.

One-quarter corner to Section 6, Township 38 South, Range 5 East.

At the corner point I found a standard Bureau of Land Management monument marked:

U. S. Dept. of Interior
 Unlawful to Disturb

¼ S6

T38S R5E
 1963

Bureau of Land Management
 Cadastral Surveys

From which the following references:

- A 11-inch diameter fir bears S 27° 44' E 12.10 feet distance. Healed blaze.
- A 35-inch diameter fir bears S 15° 50' W 25.00 feet distance. Healed blaze.
- A 13-inch diameter fir bears S 60° 55' W 64.70 feet distance. Healed blaze.

Note: I find this corner bears S 00° 31' 54" W 5.45 feet distance from true corner position. I set no monument at true corner position. I use this monument as control for north-south center line of Section 6 only.

One-quarter corner to Section 31, Township 37 South, Range 5 East.

At the corner point I found a standard Bureau of Land Management monument marked:

U. S. Dept. of Interior
 Unlawful to Disturb

T37S R5E
 ¼ S31

T38S R5E
 Cadastral Surveys
 Bureau of Land Management

A 17-inch diameter fir bears N 43° 49' E 53.40 feet distance. Scribe visible.

A 10-inch diameter fir bears N 83° 38' E 22.00 feet distance. Healed blaze.

A 17-inch diameter fir bears S 74° 18' E 15.60 feet distance. Healed blaze.

A 13-inch diameter fir bears S 32° 58' E 38.70 feet distance. Scribe visible.

A 11-inch diameter fir bears S 09° 36' W 52.00 feet distance. Scribe visible.

A 11-inch diameter fir bears N 83° 31' W 53.40 feet distance. Scribe visible.

South one-sixteenth corner common to Sections 5 and 6, Township 38 South, Range 5 East.

At the corner point I found a 2½-inch diameter iron post with a 3-inch diameter brass cap marked:

RS 638

S 1/16
S6 | S5
1970

From which the following references:

A 13-inch diameter fir bears S 31° 24' E 35.30 feet distance. Scribe visible.

A 16-inch diameter fir bears S 50° 07' W 14.50 feet distance. Scribe visible.

One-quarter corner common to Sections 5 and 6, Township 38 South, Range 5 East.

At the corner point I found a standard Bureau of Land Management monument marked:

U. S. Dept. of Interior
Unlawful to Disturb
T38S R5E

¼
S6 | S5
1963

Cadastral Surveys
Bureau of Land Management

From which the following references:

A 10-inch diameter fir bears N 22° 10' E 8.80 feet distance. Scribe visible. This tree dead and down.

A 23-inch diameter pine bears S 20° 29' E 23.85 feet distance.

From which the following references:

A 18-inch diameter fir bears N 62° 10' E 50.80 feet distance. Scribe visible.

A 15-inch diameter fir bears N 63° 50' E 41.10 feet distance. Scribe visible

A 11-inch diameter fir bears S 19° 00' E 21.90 feet distance. Scribe visible.

One-quarter corner common to Sections 6 and 7, Township 38 South, Range 5 East.

At the corner point I found a standard Bureau of Land Management monument marked:

U. S. Dept. of Interior
Unlawful to Disturb
T38S R5E

1/4 $\frac{S6}{S7}$

1963
Cadastral Surveys
Bureau of Land Management

From which the following references:

A 15-inch diameter fir bears S 19° 26' W 12.80 feet distance. Scribe visible.

A 16-inch diameter fir bears S 62° 10' W 29.70 feet distance. Scribe visible.

A 15-inch diameter fir bears N 49° 22' W 22.20 feet distance. Scribe visible.

A 17-inch diameter fir bears N 39° 56' E 17.60 feet distance. Scribe visible.

Section corner common to Sections 5, 6, 7 and 8, Township 38 South, Range 5 East.

At the corner point I found a standard Bureau of Land Management monument marked:

U. S. Dept. of Interior
Unlawful to Disturb
T38S R5E

S6 | S5
—+—
S7 | S8

1968
Cadastral Surveys
Bureau of Land Management

From which the following references:

A 32-inch diameter fir bears N 42° 50' E 10.90 feet distance. Scribe visible. This tree is now dead.

SURVEY NARRATIVE TO COMPLY WITH
PARAGRAPH 209.250 OREGON REVISED STATUTES

SURVEY FOR: Rogue River National Forest
P. O. Box 520
Medford, Oregon 97501

LOCATION: Section 6, Township 38 South, Range 5 East,
Willamette Meridian, Klamath County, Oregon.

BASIS OF BEARING: Solar observation

PURPOSE: To establish property corners and mark and post
National Forest boundaries within Section 6.

PROCEDURE: Prior to commencement of this survey an investiga-
tion of corner control was made. Various
controlling corners had been remonumented from ori-
ginal evidence by the Bureau of Land Management.
The entire east line and the east half of the north
line had been retraced by Registered Land Surveyor
No. 638, George R. Burrell. Surveyor Burrell had
established controlling one sixteenth corners
during his survey of Section 5 and retracement of
the east half of the north line Section 6.

These corners were found correctly located and
accepted as controlling corners for this survey.
(Ref. Klamath County Surveyors Office Record Survey
No. 1529 and 2278.)

With the above corner control verified a series of
closed traverses were ran tying controlling
corners. From this data corner positions were
established and true lines posted as shown on the
attached map of survey.

All lines were posted using metal posts with
National Forest Boundary signs attached. In
addition, trees along the true line were blazed,
hacked, and painted with red timber marking paint.

This survey was performed utilizing a Wild-T2
Theodolite and Hewlett-Packard 3808-A Electronic
Distance Measuring Instrument.

Corners Accepted for Control

One-quarter corner Section 6 only, Township 38 South, Range 5 East.

At the
corner point I found a standard Bureau of Land Management monument marked:

U. S. Dept. of Interior
Unlawful to Disturb
T38S R5E

1/4
| S6

1963

Cadastral Surveys
Bureau of Land Management