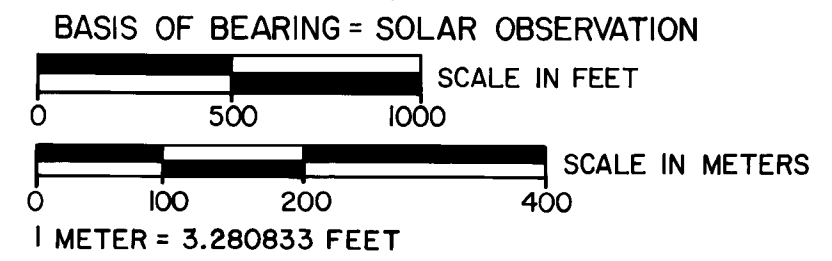
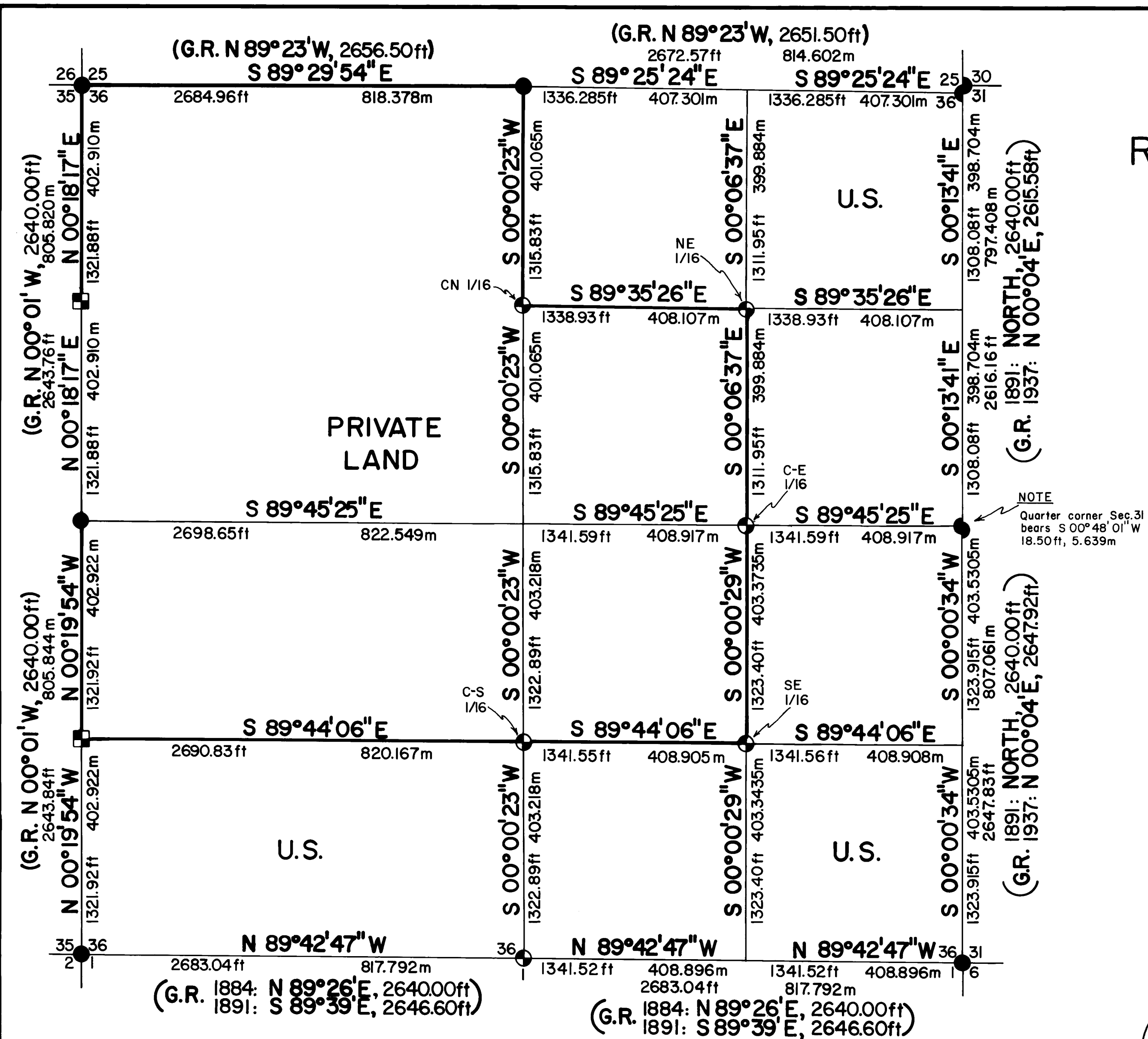


# MAP OF SURVEY FOR ROGUE RIVER NATIONAL FOREST P.O. BOX 520 MEDFORD, OREGON JUNE 13, 1980



**HISTORY OF SURVEYS**

THE SOUTH LINE OF SECTION 36 WAS SURVEYED BY RUFUS S. MOORE IN 1884, UNDER CONTRACT NO. 496, AS PART OF HIS WORK IN TOWNSHIP 32 SOUTH, RANGE 3 EAST.

THE EAST SECTION LINE WAS ESTABLISHED, AND THE SOUTH SECTION LINE RETRACED, DURING A SURVEY OF TOWNSHIP 31 SOUTH, RANGE 3 EAST, BY PETER APPLIGATE IN 1891, UNDER CONTRACT NO. 571.

THE SUBDIVISION OF TOWNSHIP 31 SOUTH, RANGE 3 EAST WAS DONE BY PETER APPLIGATE IN APRIL, 1891, UNDER CONTRACT NO. 571.

RETRACEMENT AND RESURVEY OF THE EAST SECTION LINE WAS PERFORMED BY NORMAN D. PRICE AND LEONARD CARTER IN 1937, UNDER GROUP NO. 176.

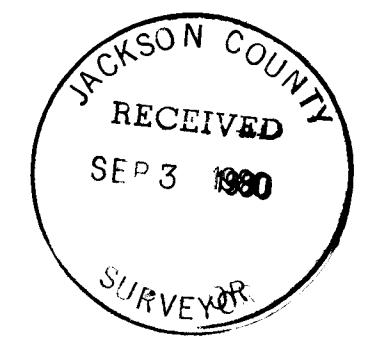
THE SECTION LINE BETWEEN SECTIONS 35 AND 36 WAS RETRACED BY HAROLD CENTER AS PART OF THE SUBDIVISION OF SECTION 35. (FILED UNDER RECORD OF SURVEY NO. 8155.)

**LEGEND**

- FOUND STANDARD GLO, BLM, OR COUNTY SURVEYOR MONUMENT.
- ⊙ SET 2 1/2" DIA. X 30" LG. IRON POST WITH 2 1/2" DIA. BRASS CAP UNLESS OTHERWISE NOTED.
- SECTION LINE CALCULATED FROM TRAVERSE SURVEY.
- PROPERTY LINE ESTABLISHED AND POSTED THIS SURVEY.
- G.R. GOVERNMENT RECORD
- ⊠ FOUND 2 1/2" DIA. X 30" LG. IRON POST WITH 2 1/2" DIA. BRASS CAP (SET L.S. NO. 1071 UNDER RECORD SURVEY NO. 8155.)

**CERTIFICATE OF SURVEY**

I, HAROLD L. CENTER, REGISTRATION NO. 1071 REGISTERED PROFESSIONAL LAND SURVEYOR, STATE OF OREGON, HEREBY CERTIFY THAT THIS MAP CORRECTLY REPRESENTS A SURVEY MADE BY ME OR UNDER MY DIRECTION IN CONFORMANCE WITH THE LAWS OF THE STATE OF OREGON, AT THE REQUEST OF THE U.S. FOREST SERVICE.



U.S. DEPARTMENT OF AGRICULTURE <b>FOREST SERVICE</b>	
REGION 6	ROGUE RIVER NAT. FOREST
DEPENDENT RESURVEY and SECTION SUBDIVISION SEC. 36, T. 31S., R. 3E., W.M. JACKSON COUNTY, OREGON	
REVIEWED BY <i>Harold L. Center</i>	DATE <i>8-28-80</i>
REVIEWED BY <i>Dick Hathaway</i>	DATE <i>8/29/80</i>

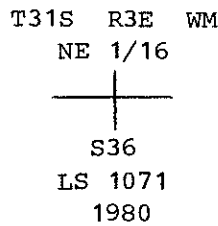
From which the following references:

A Douglas-fir 13-inches in diameter bears S 69° 19' E 25.40 feet distant, scribed CE 1/16 LS 1071 BT on a double blaze.

A Douglas-fir 11-inches in diameter bears N 25° 12' W 15.00 feet distant, scribed CE 1/16 LS 1071 BT on a double blaze.

Northeast one-sixteenth corner of Section 36, Township 31 South, Range 3 East, Willamette Meridian.

At the corner position I set a 2½-inch diameter galvanized iron post with a 2½-inch diameter brass cap marked:



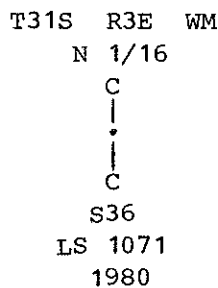
From which the following references:

A fir 11-inches in diameter bears N 75° 16' E 21.90 feet distant, scribed NE 1/16 LS 1071 BT on a double blaze.

A yew 7-inches in diameter bears S 10° 12' W 46.00 feet distant, scribed NE 1/16 LS 1071 BT on a double blaze.

Centernorth one-sixteenth corner of Section 36, Township 31 South, Range 3 East, Willamette Meridian.

At the corner position I set a 2½-inch diameter galvanized iron post with a 2½-inch diameter brass cap marked:



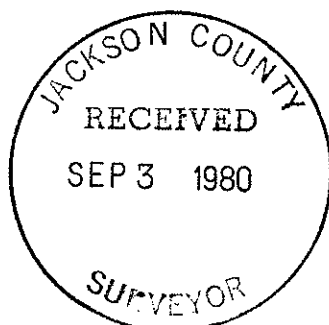
From which the following references:

A Douglas-fir 18-inches in diameter bears N 14° 22' E 94.40 feet distant, scribed CN 1/16 LS 1071 BT on a double blaze.

A Douglas-fir 6-inches in diameter bears S 34° 19' W 30.10 feet distant, scribed CN 1/16 LS 1071 BT on a double blaze.

June 13, 1980

HAROLD L. CENTER  
Registered Professional Land Surveyor  
Oregon Certificate No. 1071



A Douglas-fir 23-inches in diameter bears S 82° 06' E 110.30 feet distant, scribed 1/4 S1 LS 1071 BT on a double blaze.

Center-south one-sixteenth of Section 36, Township 31 South, Range 3 East, Willamette Meridian.

At the proportioned corner position I set a 2 1/2-inch diameter galvanized iron post with a 2 1/2-inch diameter brass cap marked:

T31S R3E WM  
S 1/16  
C  
S ● 36  
C  
LS 1071  
1980

From which the following references:

A hemlock 7-inches in diameter bears S 80° 28' E 32.40 feet distant, scribed CS 1/16 LS 1071 BT on a double blaze.

A yew 10-inches in diameter bears S 42° 20' W 25.50 feet distant, scribed CS 1/16 LS 1071 BT on a double blaze.

Southeast one-sixteenth corner Section 36, Township 31 South, Range 3 East, Willamette Meridian.

At the corner position I set a 2 1/2-inch diameter galvanized iron post with a 2 1/2-inch diameter brass cap marked:

T31S R3E WM  
SE 1/16  
+  
S36  
LS 1071 1980

From which the following references:

A Douglas-fir 7-inches in diameter bears N 32° 24' W 58.10 feet distant, scribed SE 1/16 LS 1071 BT on a double blaze.

A fir 10-inches in diameter bears N 59° 17' E 83.10 feet distant, scribed SE 1/16 LS 1071 BT on a double blaze.

Center-east one-sixteenth corner of Section 36, Township 31 South, Range 3 East, Willamette Meridian.

At the corner position I set a 2 1/2-inch diameter galvanized iron post with a 2 1/2-inch diameter brass cap marked:

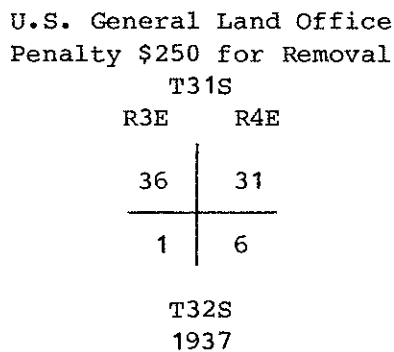
T31S R3E WM  
S36  
E 1/16 C —●— C  
LS 1071  
1980

From which the following references:

- A fir 29-inches in diameter bears N 3° 03' W 27.00 feet distant with a healed scar.
- A fir 53-inches in diameter bears S 11° 13' W 86.90 feet distant with a healed scar.
- One quarter corner of Section 31, Township 31 South, Range 4 East, Willamette Meridian bears S 0° 47' 58" W 18.50 feet distant.

Section corner common to Section 36, Township 31 South, Range 3 East; Section 31, Township 31 South, Range 4 East; Section 1, Township 32 South, Range 3 East; and Section 6, Township 32 South, Range 4 East, Willamette Meridian.

At the corner position I found a General Land Office brass cap monument marked:



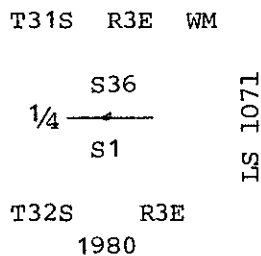
From which the following references:

- A fir 14-inches in diameter bears S 61° 01' W 34.30 feet distant with a healed blaze.
- A fir 30-inches in diameter bears N 49° 21' W 53.75 feet distant with a healed blaze.
- A fir stump 34-inches in diameter bears N 10° 28' E 19.45 feet distant with a healed blaze.
- A fir 40-inches in diameter bears S 25° 23' E 29.10 feet distant with a healed blaze.

CORNERS ESTABLISHED THIS SURVEY

One quarter corner common to Section 36, Township 31 South, Range 3 East, and Section 1, Township 32 South, Range 3 East, Willamette Meridian.

At the proportioned corner position I set a 2½-inch diameter galvanized iron post with a 2½-inch diameter brass cap marked:



From which the following references:

- A fir 17-inches in diameter bears N 63° 32' W 57.00 feet distant, scribed 1/4 S36 LS 1071 BT on a double blaze.

One-quarter corner common to Sections 25 and 36, Township 31 South, Range 3 East, Willamette Meridian. At the corner location I found a standard Bureau of Land Management monument marked:

U. S. Department of the Interior  
 Unlawful to disturb  
 T31S R3E  
 1/4  $\frac{S25}{S36}$   
 1966  
 Cadastral Survey  
 Bureau of Land Management

From which the following references:

A fir 15-inches in diameter bears S 35° 09' W 20.30 feet distant with a healed double blaze.

A fir 17-inches in diameter bears N 62° 13' W 15.80 feet distant with a healed single blaze.

A snag 23-inches in diameter bears N 10° 18' W 6.70 feet distant, scribed 1/4 S visible on a double blaze.

Section corner common to Sections 25 and 36, Township 31 South, Range 3 East, Willamette Meridian.

At the corner location I found a General Land Office brass cap monument marked:

U.S. General Land Office Survey  
 Penalty \$250 for Removal  
 T31S  
 $\frac{S25}{S36}$  | S31  
 R3E R4E  
 1937

From which the following references:

Dead and down fir 18-inches in diameter bears N 61° 22' W 19.60 feet distant.

A fir 22-inches in diameter bears S 46° 19' W 19.60 feet distant with a healed blaze.

The closing corner common to Sections 30 and 31, Township 31 South, Range 4 East, Willamette Meridian, bears N 0° 14' E 5.94 feet distant. (See Jackson County Surveyor's re-establishment records for information.)

One quarter corner of Section 36, Township 31 South, Range 3 East, Willamette Meridian.

At the corner location I found a General Land Office brass cap monument marked:

U.S. General Land Office  
 Penalty \$250 for Removal  
 1/4 36 |  
 1937

NARRATIVE TO COMPLY WITH OREGON REVISED  
STATUTES PARAGRAPH 209.250

SURVEY FOR: Rogue River National Forest  
P. O. Box 520  
Medford, Oregon 97501

LOCATION: Section 36, Township 31 South, Range 3 East,  
Willamette Meridian, Jackson County, Oregon.

BASIS OF BEARING: Solar observation.

PURPOSE: To establish property corners and mark and post  
National Forest ownership within Section 36.

PROCEDURE: Prior to commencement of this survey, an investiga-  
tion of corner control was made. The General Land  
Office had remonumented corners on the east section  
line from original evidence as part of their sub-  
division work in Range 4 East.

The Bureau of Land Management had remonumented from  
original evidence all remaining corners except the  
south one-quarter corner.

The North and South one-sixteenth corners common to  
Sections 35 and 36 were set during R. S. No. 8155.

With the above corner control, I began a series of  
closed traverses, tying controlling corners into a  
control net. Search areas were determined and an  
extensive search performed prior to establishment  
of the corner by proportionate measurement. All  
corners were established and property lines posted  
and blazed.

Work was performed utilizing a Wild T-2 Theodolite  
and Hewlett-Packard 3805-A Electronic Distance  
Meter.

Corners Accepted for Control

Section corner common to Sections 25, 26, 35 and 36, Township 31 South,  
Range 3 East, Willamette Meridian.

One-quarter corner common to Sections 35 and 36, Township 31 South, Range 3  
East, Willamette Meridian.

South one-sixteenth corner common to Sections 35 and 36, Township 31 South,  
Range 3 East, Willamette Meridian.

Section corner common to Sections 35 and 36, Township 31 South, Range 3  
East, and Sections 1 and 2, Township 32 South, Range 3 East, Willamette  
Meridian.

The above corners were described in Record of Survey Number 8155 and will  
not be redescribed within this narrative.