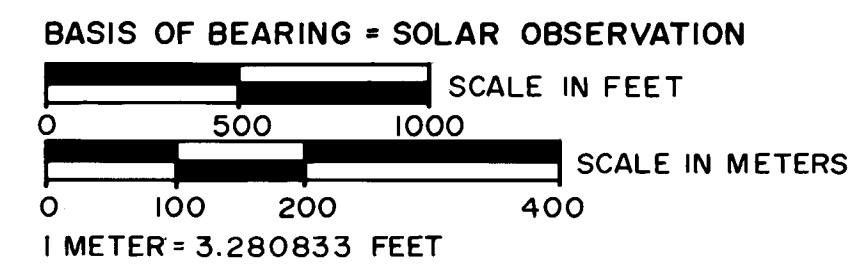
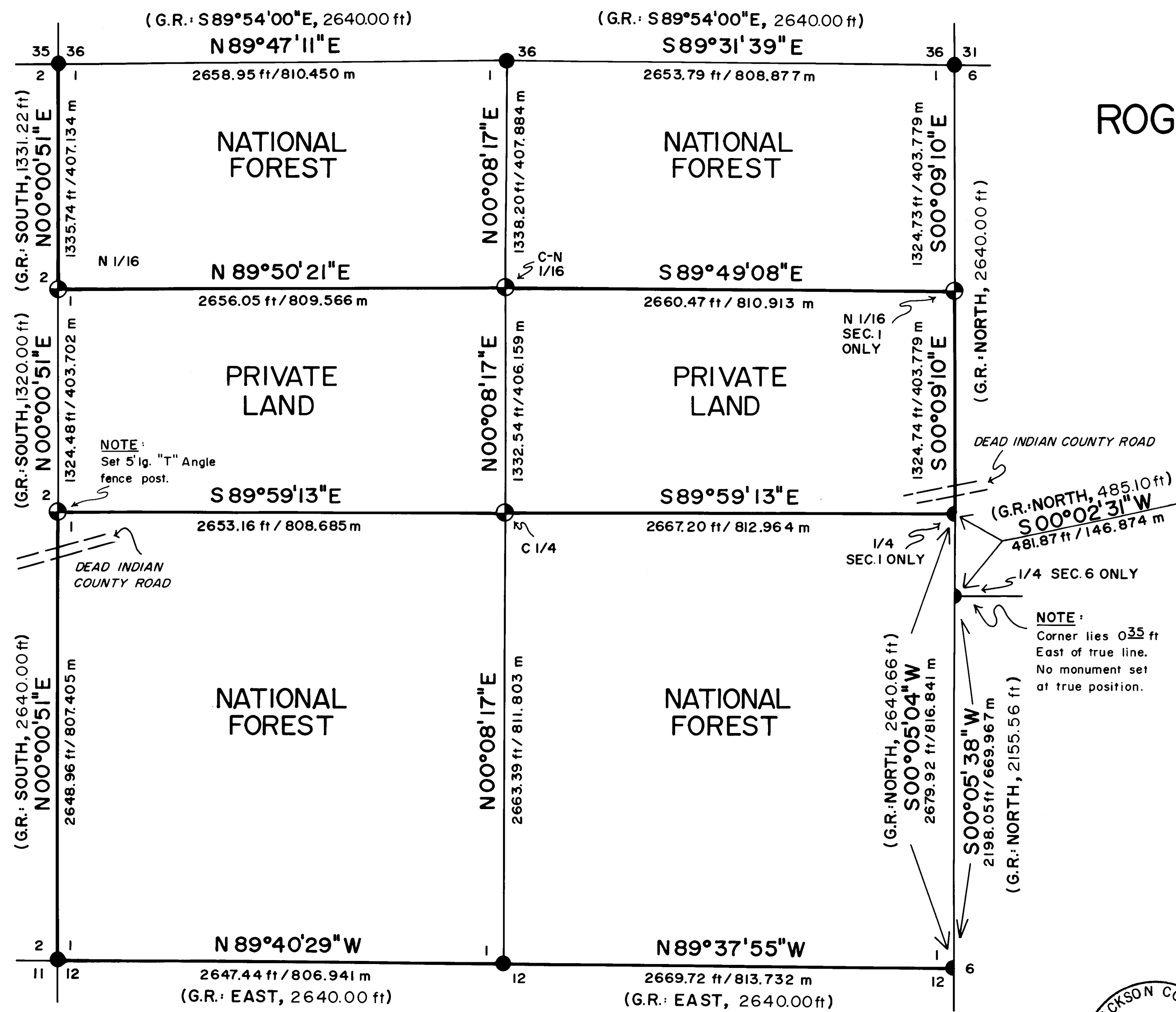


MAP OF SURVEY  
FOR  
ROGUE RIVER NATIONAL FOREST  
P.O. BOX 520  
MEDFORD, OREGON  
AUGUST 25, 1980



HISTORY OF SURVEYS

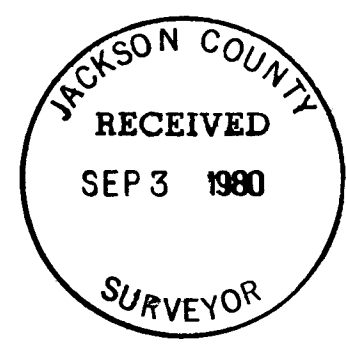
THE ORIGINAL ESTABLISHMENT OF THE EXTERIOR BOUNDARY LINES OF SECTION 1 WAS PERFORMED BY M.L. McCALL AND J. APPLIGATE UNDER CONTRACT NO. 144, DATED APRIL 12, 1871.  
THE EAST BOUNDARY OF SECTION 1 WAS RETRACED AND RESURVEYED BY F. MENCH, APPROVED JUNE 26, 1911.  
THE RECOVERED ORIGINAL MONUMENTS WERE REMONUMENTED BY THE BUREAU OF LAND MANAGEMENT, CADASTRAL SURVEYS AND THE JACKSON COUNTY SURVEYOR.  
NO EVIDENCE OF OTHER SURVEY MONUMENTS WAS RECOVERED.

LEGEND

- FOUND STANDARD BLM OR COUNTY SURVEYOR MONUMENT.
- ⊕ SET 2 1/2" DIA. X 30" LG. IRON POST WITH 2 1/2" BRASS CAP UNLESS OTHERWISE NOTED.
- G.R. GOVERNMENT RECORD.
- SECTION LINE CALCULATED FROM TRAVERSE SURVEY.
- PROPERTY LINE ESTABLISHED AND POSTED THIS SURVEY.

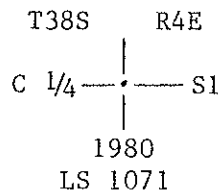
CERTIFICATE OF SURVEY

I, HAROLD L. CENTER, REGISTRATION NO. 1071 REGISTERED PROFESSIONAL LAND SURVEYOR, STATE OF OREGON, HEREBY CERTIFY THAT THIS MAP CORRECTLY REPRESENTS A SURVEY MADE BY ME OR UNDER MY DIRECTION IN CONFORMANCE WITH THE LAWS OF THE STATE OF OREGON, AT THE REQUEST OF THE U.S. FOREST SERVICE.



U.S. DEPARTMENT OF AGRICULTURE <b>FOREST SERVICE</b>	
REGION 6	ROGUE RIVER NAT'L. FOREST
DEPENDENT RESURVEY and SECTION SUBDIVISION SEC. 1, T. 38 S., R. 4 E., W. M. JACKSON COUNTY, OREGON	
REVIEWED BY <i>Harold L. Center</i>	DATE 8-28-80
REVIEWED BY <i>Dick Hathaway</i>	DATE 8-29-80

At the corner point I set a 2 1/2-inch diameter galvanized iron post with a 2 1/2-inch diameter brass cap marked:



From which the following references:

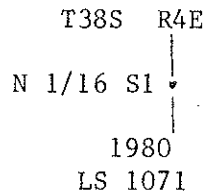
A 19-inch diameter fir bears S 47° 47' E 60.20 feet distance. Scribed C 1/4 S1 LS 1071 BT.

A 22-inch diameter fir bears S 26° 08' W 43.80 feet distance. Scribed C 1/4 S1 LS 1071 BT.

The center line Dead Indian County Road bears North 13.00 feet distance.

North one-sixteenth to Section 1 only, Township 38 South, Range 4 East.

At the corner point I set a 2 1/2-inch diameter galvanized iron post with a 2 1/2-inch diameter brass cap marked:



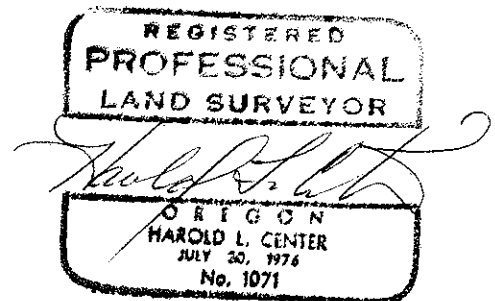
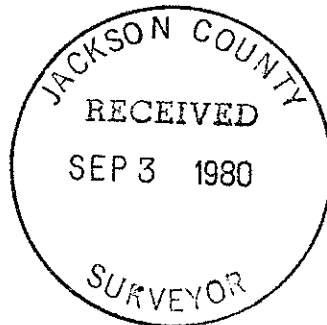
From which the following references:

A 22-inch diameter fir bears S 57° 36' W 13.60 feet distance. Scribed N 1/16 S1 LS 1071 BT.

A 14-inch diameter fir bears N 16° 19' W 17.55 feet distance. Scribed N 1/16 S1 LS 1071 BT.

August 25, 1980

HAROLD L. CENTER  
Registered Professional Land Surveyor  
Oregon Certificate No. 1071



From which the following references:

A 12-inch diameter pine bears N 53° 14' E 12.38 feet distance. Scribed 1/4 S1 LS 1071 BT.

A 12-inch diameter pine bears S 34° 55' E 18.19 feet distance. Scribed X BT.

A 3-inch diameter yew post flattened on the east and west with scribe 1/4 S1 on east and 1/4 S2 on west, bears South 1.00 feet distance.

No trees are reasonably available for marking within Section 2 due to beaver marsh.

North one-sixteenth corner to Sections 1 and 2, Township 38 South, Range 4 East.

At the corner point I set a 2 1/2-inch diameter galvanized iron post with a 2 1/2-inch diameter brass cap marked:

T38S R4E  
N 1/16  
S2 | S1  
1980  
LS 1071

From which the following references:

A 11-inch diameter pine bears S 83° 00' W 38.70 feet distance. Scribed N 1/16 S2 LS 1071 BT.

A 15-inch diameter fir bears S 42° 56' E 29.90 feet distance. Scribed N 1/16 S1 LS 1071 BT.

The corner point of a barbed wire fence bears N 60° E 15.00 feet distance.

Centernorth one-sixteenth corner Section 1, Township 38 South, Range 4 East.

At the corner point I set a 2 1/2-inch diameter galvanized iron post with a 2 1/2-inch diameter brass cap marked:

T38S R4E  
C  
N 1/16 | S1  
C  
1980  
LS 1071

From which the following references:

A 18-inch diameter fir bears N 56° 45' E 8.40 feet distance. Scribed CN 1/16 S1 LS 1071 BT.

A 6-inch diameter fir bears S 05° 44' W 8.50 feet distance. Scribed X BT.

Center one-quarter corner Section 1, Township 38 South, Range 4 East.

One-quarter corner common to Section 36, Township 37 South, Range 4 East, and Section 1, Township 38 South, Range 4 East.

At the corner point I found a standard Jackson County Surveyor monument marked:

T37S            R4E  
1/4 S  $\frac{36}{1}$   
C.S.  
T38S  
1978

From which the following references:

A 19-inch diameter fir bears S 37° 00' W 25.00 feet distance. Scribed CS BT.

A 20-inch diameter fir bears N 24° 00' E 24.45 feet distance. Scribed CS BT.

Section corner common to Sections 35 and 36, Township 37 South, Range 4 East, and Sections 1 and 2, Township 38 South, Range 4 East.

At the corner point I found a standard Bureau of Land Management monument marked:

U. S. Dept. of Interior  
Unlawful to Disturb  
T37S R4E

S35	S36
S2	S1

T38S  
1973  
Cadastral Surveys  
Bureau of Land Management

From which the following references:

A 15-inch diameter fir bears N 33° 30' E 59.20 feet distance. Open scar with scribe visible.

A 13-inch diameter fir bears S 61° 30' E 39.10 feet distance. Open scar with scribe visible.

A 12-inch diameter fir bears S 34° 00' W 39.80 feet distance. Open face scribe visible.

A 30-inch diameter fir bears N 17° 00' W 44.20 feet distance. This tree is dead and down.

CORNERS ESTABLISHED THIS SURVEY

One-quarter corner common to Sections 1 and 2, Township 38 South, Range 4 East.

At the corner point I set a 5 foot long 'T' angle fence post. This corner falls on the east edge of a large beaver marsh, and I was unable to set a standard dimension monument so I elected to substitute the fence post.

At the corner point I found a standard Bureau of Land Management monument marked:

U. S. Dept. of Interior  
 Unlawful to Disturb  
 T38S R4E

1/4  
 S1  
 1968  
 Cadastral Surveys  
 Bureau of Land Management

From which the following references:

- A 30-inch diameter fir bears S 67° 40' E 11.00 feet distance. This tree is now dead.
- A 16-inch diameter pine bears S 11° 58' W 105.47 feet distance.
- A 24-inch diameter pine bears N 72° 17' W 10.60 feet distance.
- A 7-inch diameter fir stump bears S 75° 02' W 19.50 feet distance.

Section corner common to Section 31, Township 37 South, Range 4 East, Section 36, Township 37 South, Range 5 East, Section 6, Township 38 South, Range 5 East, and Section 1, Township 38 South, Range 4 East.

At the corner point I found a standard Bureau of Land Management monument marked:

U. S. Dept. of Interior  
 Unlawful to Disturb  
 T37S  
 R4E R5E

S31	S36
S1	S6

T38S  
 Cadastral Surveys  
 Bureau of Land Management

From which the following references:

- A 10-inch diameter fir bears N 25° 00' E 45.23 feet distance. Healed scar.
- A 10-inch diameter fir bears S 16° 00' W 29.84 feet distance. Open scar, scribe visible.
- A 16-inch diameter fir bears S 44° 00' W 21.31 feet distance. Open scar.
- A 13-inch diameter fir bears N 68° 00' W 30.80 feet distance. Healed scar.
- A 18-inch diameter fir bears N 25° 00' W 74.91 feet distance.
- A 26-inch diameter fir bears S 25° 30' E 45.77 feet distance.
- A 15-inch diameter pine bears N 85° 00' E 39.58 feet distance.
- A 26-inch diameter fir bears S 60° 00' E 8.03 feet distance.

A 18-inch diameter yew bears S 59° 47' E 173.25 (Record) feet distance.

A 20-inch diameter pine bears S 32° 03' W 45.20 feet distance.

A 24-inch diameter fir bears S 82° 36' W 19.00 feet distance. This tree dead and broken at approximately 10 feet above ground level.

A 15-inch diameter fir bears N 83° 48' W 19.70 feet distance.

One-quarter corner common to Sections 1 and 12, Township 38 South, Range 4 East.

At the corner point I found a standard Bureau of Land Management monument marked:

U. S. Dept. of Interior  
 Unlawful to Disturb  
 T38S R4E  
 $\frac{1}{4} \frac{S1}{S12}$   
 1973  
 Cadastral Surveys  
 Bureau of Land Management

From which the following references:

A 40-inch diameter fir bears N 20° 55' E 7.20 feet distance.

A 6-inch diameter fir bears N 14° 42' E 45.50 feet distance.

A 12-inch diameter fir bears S 46° 24' W 91.00 feet distance.

Section corner common to Sections 1 and 12, Township 38 South, Range 4 East, and Section 6, Township 38 South, Range 5 East.

At the corner point I found a standard Bureau of Land Management monument marked:

U. S. Dept. of Interior  
 Unlawful to Disturb  
 T38S  
 R4E R5E  

S1	S3
S12	

  
 1973  
 Cadastral Surveys  
 Bureau of Land Management

From which the following references:

A 11-inch diameter fir bears N 54° 56' W 28.60 feet distance. This tree is now dead.

A 16-inch diameter fir bears N 28° 15' W 58.60 feet distance.

A 44-inch diameter fir bears S 29° 19' E 23.20 feet distance.

A 29-inch diameter fir bears S 11° 02' W 25.00 feet distance. This tree is dead and down.

A 6-inch diameter fir bears S 45° 20' W 18.50 feet distance.

One-quarter corner Section 1, Township 38 South, Range 4 East.

SURVEY NARRATIVE TO COMPLY WITH  
PARAGRAPH 209.250 OREGON REVISED STATUTES

SURVEY FOR: Rogue River National Forest  
P. O. Box 520  
Medford, Oregon 97501

LOCATION: Section 1, Township 38 South, Range 4 East,  
Willamette Meridian, Jackson County, Oregon.

BASIS OF BEARING: Solar observation

PURPOSE: To establish corners and mark and post  
National Forest Boundaries within Section 1.

PROCEDURE: Prior to commencement of this survey an  
investigation of controlling section corners  
was made. All corners had been recovered and  
remonumented by either the Bureau of Land  
Management or Jackson County Surveyor with the  
exception of the west one-quarter corner.  
With the required controlling corners verified  
I established a series of closed traverse  
lines tying all corners to part of a closed  
traverse. From this information a search area  
was determined for the missing one-quarter  
corner, an extensive search for evidence  
proved unsuccessful. This corner falls on the  
east edge of a large marsh, beavers have  
established a series of small ponds and search  
for corner evidence is very difficult. I,  
therefore, reestablished this corner by pro-  
portionate measurement. True lines were  
posted with metal fence posts with National  
Forest boundary signs attached. Trees along  
the True Line were blazed and painted with red  
tree marking paint.

This survey was performed utilizing a Wild  
T-16 Theodolite and Hewlett-Packard 3805-A  
Electronic Distance measuring instrument.

Corners Accepted For Control

Section corner common to Sections 1, 2, 11 and 12, Township 38 South, Range  
4 East.

At the corner point I found a standard Bureau of Land Management monument  
marked:

U. S. Dept. of Interior  
Unlawful to Disturb  
T38S R4E

S2	S1
S11	S12

1973  
Bureau of Land Management  
Cadastral Surveys

From which the following references:

A 19-inch diameter fir bears N 63° 07' E 37.30 feet distance.