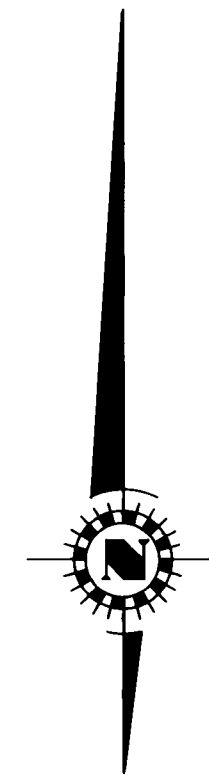
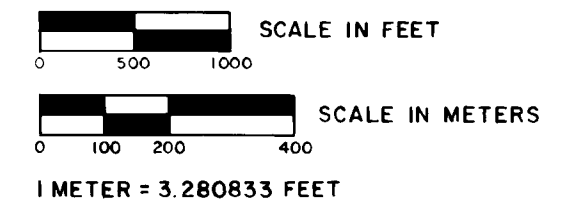


RECORD OF SURVEY  
LOCATED IN T.36S., R.3E.W.M  
FOR  
ROGUE RIVER NATIONAL FOREST

P.O. BOX 520  
MEDFORD, OREGON  
JULY 20, 1980



BASIS OF BEARINGS  
SOLAR OBSERVATION



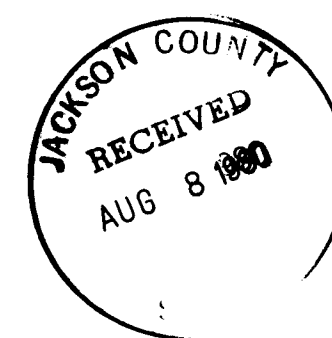
HISTORY OF SURVEYS

THE EXTERIOR LINES AND SUBDIVISION OF TOWNSHIP 36 SOUTH, RANGE 3 EAST W.M. WERE SURVEYED BY RUFUS S. MOORE UNDER CONTRACT NO. 475 IN SEPTEMBER, 1883.  
THE WEST BOUNDARY OF TOWNSHIP 36 SOUTH, RANGE 4 EAST W.M. WAS RETRACED BY LINCOLN E. WILKES, GOVERNMENT LAND OFFICE UNDER GROUP NO. 86 IN SEPTEMBER, 1925.  
REMONUMENTATION OF CERTAIN ORIGINAL CORNER POINTS ON THE EXTERIOR AND SUBDIVISIONAL LINES OF TOWNSHIP 36 SOUTH, RANGE 3 EAST W.M. WERE REMONUMENTED BY THE BUREAU OF LAND MANAGEMENT, UNDER GROUP NOS. 350 AND 473 IN 1962 AND UNDER GROUP NO. 350 IN 1966.

SURVEY METHOD  
20" TRANSIT AND  
ELECTRONIC DISTANCE METER

EXAMINED AND ACCEPTED  
FOR THE U.S. FOREST SERVICE  
THIS 20<sup>th</sup> DAY OF August 1980.

*[Signature]* C.O.R.



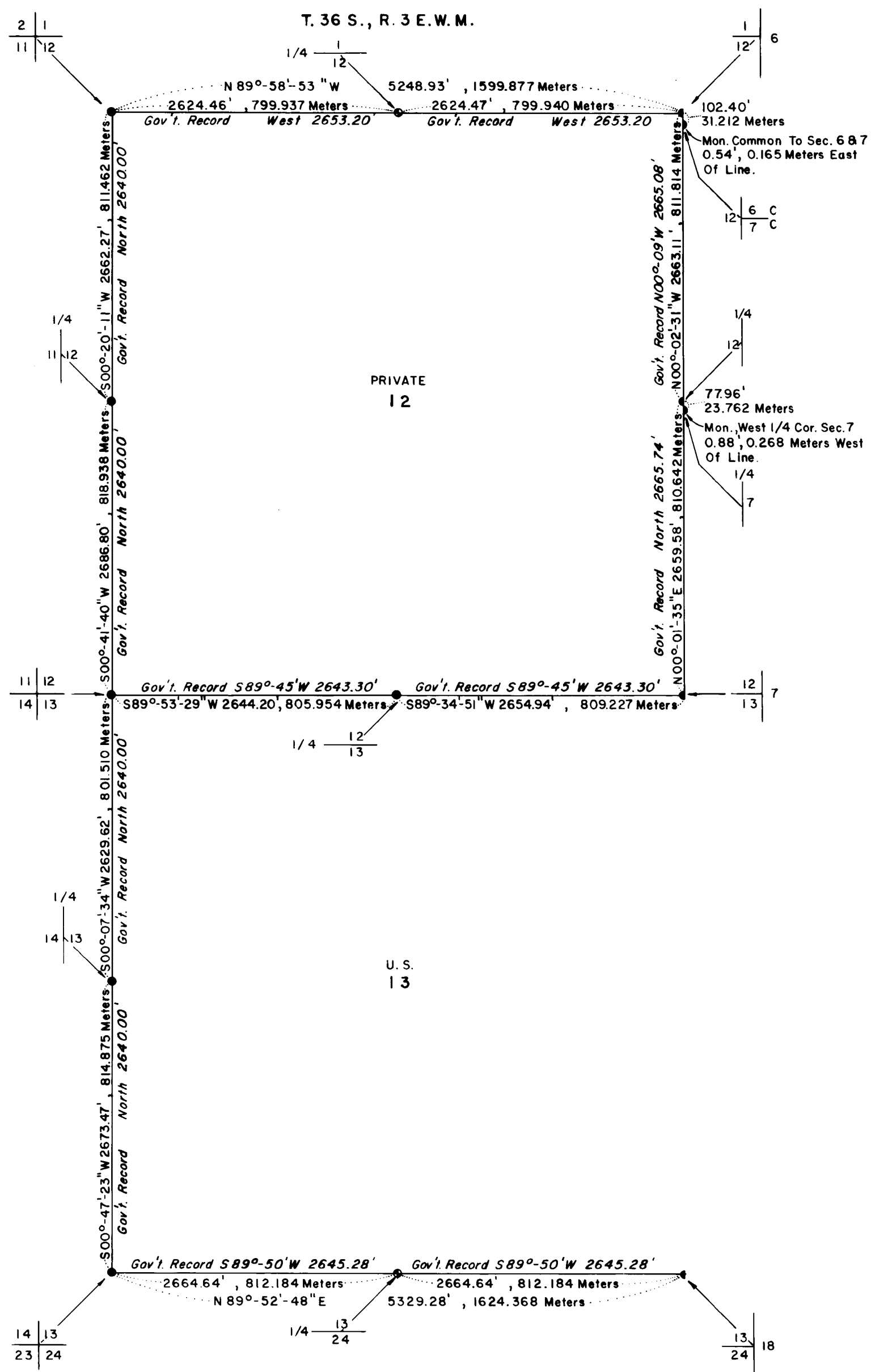
CERTIFICATE OF SURVEY

"I, BOBBY G. DEARING, A REGISTERED LAND SURVEYOR IN THE STATE OF OREGON, HEREBY CERTIFY THAT THIS PLAT AND THE NOTES HEREON, OR ATTACHED, ARE A CORRECT REPRESENTATION OF A SURVEY I PERFORMED DURING MAY/JUNE 1980, FOR THE U.S. FOREST SERVICE, IN ACCORDANCE WITH THE STATUTES OF THE STATE OF OREGON AND WITH THE ARTICLES OF MY CONTRACT."

*Bobby G. Dearing* (s) BOBBY G. DEARING  
REGISTERED LAND SURVEYOR  
OREGON LICENSE 1809  
7672 SKYLINE DRIVE  
KLAMATH FALLS, ORE. 97601

LEGEND

- FOUND STANDARD BLM SURVEYOR MONUMENT
- FOUND STANDARD BLM SURVEYOR MONUMENT
- SET 2-1/2" DIA. x 30" LG. IRON POST WITH 2-1/2" DIA. BRASS CAP UNLESS OTHERWISE NOTED. IRON POST SET BY PROPORTION.



T. 36 S., R. 4 E. W. M.

from which the remains of the original bearing trees

A decayed rubble stump, diam., undetermined, w/visible scribe mks. on piece of face and bark, bears S. 15 45' W., 26.75 ft. dist.

and the 1925 bearing trees

A Madrone, 18 ins. diam., bears S. 27 54' W., 19.50 ft. dist., w/open blaze, scribe mks visible.

A Fir, 17 ins. diam., bears N. 49 53' W., 4.35 ft. dist., w/healed blaze.

and the 1962 bearing trees

A Fir, 16-1/2 ins. diam., bears S. 68 55' W., 33.16 ft. dist., w/healed blaze.

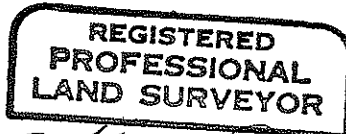
A Fir, 11-1/2 ins. diam., bears N. 19 19' W., 35.09 ft. dist., w/open blaze.

July 20, 1980

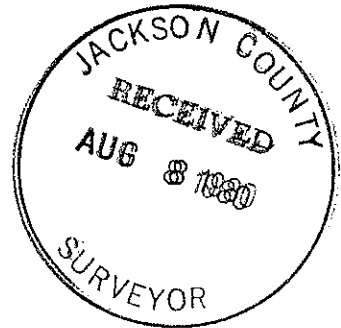
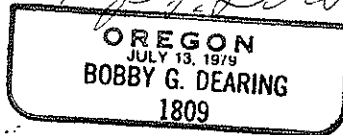
"I, Bobby G. Dearing, A Registered Land Surveyor in the State of Oregon, hereby certify that this narrative herein is a correct representation of a survey I performed during May/June 1980, for the U.S. Forest Service, in accordance with the statutes of the state of Oregon and with the articles of my contract."

*Bobby G. Dearing*

(s) Bobby G. Dearing  
Registered Land Surveyor  
Oregon License



*Bobby G. Dearing*



and the 1966 bearing trees

A Fir, 17 ins. diam., bears S. 10 14' E., 14.70 ft. dist., w/healed blaze.

A Fir, 18 ins. diam., bears N. 41 05' W., 14.15 ft. dist., w/healed blaze.

Section corner common to Sections 1, 2, 11 and 12, Township 36 South, Range 3 East, Willamette Meridian.

At the corner location, found a standard Bureau of Land Management iron post, 2-1/2 ins. diam., in a mound of stone, 2-1/2 ft. base, 1 ft. high, w/brass cap mkd.

T36S R3E

S2	S1
S11	S12

1962

from which an original bearing tree

A Fir, 21 ins. diam., bears S. 48 49' E., 11.45 ft. dist., w/healed blaze.

and the 1962 bearing trees

A Fir, 12 ins. diam. bears N. 32 17' E. 30.90 ft. w/healed blaze.

A Fir, 13 ins. diam., bears S. 32 00' E., 44.00 ft. dist., w/partially healed blaze.

A Fir, 11-1/2 ins. diam., bears S. 32 08' W., 28.10 ft. dist., w/healed blaze.

A Fir, 23 ins. diam., bears N. 75 06' W., 13.10 ft. dist., w/partially healed blaze, scribe mks. visible.

One-quarter corner common to Sections 1 and 12, Township 36 South, Range 3 East, Willamette Meridian.

Point for the one-quarter Section corner of Sections 1 and 12, at proportionate distance, there is no remaining evidence of the original corner point.

At the corner point, set a galvanized iron post, 2 ins. diam., 28 ins. long, 20 ins. in the ground, in a mound of stone 3 ft. base, 1 ft. high, w/brass cap mkd.

T36S R3E

1/4	S1	S12
-----	----	-----

RLS 1809

1980

from which new bearing trees

A Fir, 17-1/2 ins. diam., bears N. 16 07' E., 20.75 ft. dist., mkd. 1/4 S 1 on upper blaze and BT on lower blaze. Tagged lower blaze with aluminum washer mkd., RLS 1809.

A Fir, 11-1/2 ins. diam., bears S. 52 26' E., 4.75 ft. dist., mkd. 1/4 S 12 on upper blaze and BT on lower blaze. Tagged lower blaze with aluminum washer mkd., RLS 1809.

The Section corner common to Sections 1 and 12, Township 36 South, Range 3 East, Willamette Meridian.

At the corner location, found a standard Bureau of Land Management iron post, 2-1/2 ins. diam., projecting 6 ins. above the ground, w/mkd. stone alongside w/5 notches on the S and 1 notch on east face, and brass cap mkd.

T36S  
R3E R4E

S1	S6
S12	

1962

Section corner common to Sections 11, 12, 13 and 14, Township 36 South, Range 3 East, Willamette Meridian.

At the corner location, found a standard Bureau of Land Management iron post, 2-1/2 ins. diam., projecting 6 ins. above the ground, in a ring of stone, 2 ft. in diam., with brass cap mkd.

T36S R3E

S11	S12
S14	S13
1966	

from which the remains of the original bearing trees

A Fir snag, 17 ins. diam., bears N. 38 27' E., 31.16 ft dist., w/healed blaze.

A Fir, 30 ins. diam., bears S. 17 47' W., 14.51 ft. dist., w/healed blaze.

A Cedar snag, 50 ins. diam., bears N. 22 52' W., 54.59 ft. dist., w/healed blaze.

and the 1966 bearing trees

A Fir, 10 ins. diam., bears N. 26 42' E., 10.79 ft. dist., w/healed blaze.

A Fir, 10 ins. diam., bears S. 70 35' E., 15.62 ft. dist., w/healed blaze.

A Fir, 8 ins. diam., bears S. 9 43' W., 31.98 ft. dist., w/healed blaze.

A Fir, 10 ins. diam., bears N. 15 35' W., 12.90 ft. dist., w/healed blaze.

One-quarter corner common to Sections 12 and 13, Township 36 South, Range 3 East, Willamette Meridian.

At the corner location, found a standard Bureau of Land Management iron post, 2-1/2 ins. diam., projecting 6 ins. above the ground, w/mkd. stone alongside, and brass cap mkd.

T36S R3E

1/4	S12	S13
1962		

from which the 1962 bearing trees

A Fir, 19 ins. diam., bears S. 60 17' E., 19.50 ft. dist., w/healed blaze.

A Fir, 21 ins. diam., bears N. 8 56' W., 11.35 ft. dist., w/healed blaze.

One-quarter corner common to Sections 11 and 12, Township 36 South, Range 3 East, Willamette Meridian.

At the corner location, found a standard Bureau of Land Management iron post, 2-1/2 ins. diam., projecting in a mound of stone, 1-1/2 ft. base, 1/2 ft. high, w/brass cap mkd.

T36S R3E

1/4	
S11	S12
1966	

from which the original bearing trees

A Fir, 14 ins. diam., bears S. 33 58' E., 11.30 ft. dist., w/healed blaze.

A Fir, 17 ins. diam., bears N. 84 37' W., 3.20 ft. dist., w/healed blaze.

from which new bearing trees

A Fir, 18 ins. diam., bears S. 82 07' W., 26.90 ft. dist., mkd. 1/4 S 24 on upper blaze and BT on lower blaze. Tagged lower blaze with aluminum washer mkd., RLS 1809.

A Fir, 15 ins. diam., bears N. 38 58' W., 48.63 ft. dist., mkd. 1/4 S 13 on upper blaze and BT on lower blaze. Tagged lower blaze with aluminum washer mkd., RLS 1809.

Section corner common to Sections 13, 14, 23 and 24, Township 36 South, Range 3 East, Willamette Meridian.

At the corner location, found a standard Bureau of Land Management iron post, 2-1/2 ins. diam., in a mound of stone, 2-1/2 ft. base, 1/2 ft. high, w/brass cap mkd.

T36S R3E

S14	S13
S23	S24

1966

from which original bearing tree

A Cedar, 45 ins. diam., bears S. 35.39' E., 27.00 ft. dist., w/open blaze and scribe mks. visible.

and the 1966 bearing trees

A Fir, 10 ins. diam., bears N. 48 08' E., 22.95 ft. dist., w/healed blaze.

A Fir, 10 ins. diam., bears S. 35 39'E., 6.3 ft., dist., w/healed blaze.

A Fir snag, 7 ins. diam., bears S. 24 49' W., 11.30 ft. dist., w/healed blaze.

and new bearing trees

A Fir, 10 ins. diam., bears S. 20 54-1/2' W., 50.45 ft. dist., mkd. T36S R3E S23 on upper blaze and BT on lower blaze. Tagged lower blaze with aluminum washer mkd., RLS 1809.

A Fir, 12 ins. diam., bears N. 19 50-1/2' W., 61.35 ft. dist., mkd. T36S R3E S14 on upper blaze and BT on lower blaze. Tagged lower blaze with aluminum washer mkd., RLS 1809.

One-quarter corner common to Sections 13 and 14, Township 36 South, Range 3 East, Willamette Meridian.

At the corner location, found a standard Bureau of Land Management iron post, 2-1/2 ins. diam., in a mound of stone, 3 ft. base, 1 ft. high, w/brass cap mkd.

1/4	
S14	S13

1966

from which the remains of the original bearing trees

A Fir, 36 ins. diam., bears S. 78 12' E., 9.2 ft. dist., w/open blaze

and the 1966 bearing trees

A Fir, 24 ins. diam., dead, bears S. 51 23' E., 26.30 ft. dist., w/open blaze, scribe mks. visible.

A Fir, 14 ins. diam., bears N. 89 20' W., 29.75 ft. dist., w/healed blaze.

and the 1962 bearing trees

A Fir, 11 ins. diam., bears S. 41 46' W., 30.63 ft. dist., w/healed blaze.

A Fir snag, 31 ins. diam., bears N. 16 57' W., 32.95 ft. dist., w/healed blaze.

The closing corner common to Sections 6 and 7, Township 36 South, Range 4 East, Willamette Meridian. (not a control corner)

At the corner location, found a standard Government Land Office iron post, 2 ins. diam., projecting 6 ins. above the ground, between large flat stones, w/brass cap mkd.

R3E T36S  
S12 | S6 C  
      | S7 C  
R4E  
1925

from which the 1925 bearing trees

A Fir snag, 20 ins. diam., bears N. 71 32' E., 13.18 ft. dist., w/healed blaze

A Madrone, 11 ins. diam., bears S. 37 38' E., 24.97 ft. dist., w/healed blaze.

and a 1976 Jackson County Surveyor's bearing tree

A Fir, 22-1/4 ins. diam., bears N. 46 50' E. 30.22 ft. dist., w/healed blaze.

A Fir, 26-1/4 ins. diam., bears S. 76 13' W., 8.31 ft. dist., w/healed blaze.

(origin unknown)

The Section corner common to Sections 13 and 24, Township 36 South, Range 3 East, Willamette Meridian.

At the corner location, found a standard Bureau of Land Management iron post, 2-1/2 ins. diam., projecting 5 ins. above ground, wedged between large stones, w/brass cap mkd.

T36S T36S  
R3E |  
S13 | S18  
S24 | R4E  
1966

from which the 1925 bearing trees

A Fir, 28 ins. diam., bears S. 13 40' W., 63.16 ft. dist., w/healed blaze.

A Fir, 24 ins. diam., bears N. 54 26' W., 18.6 ft. dist., w/healed blaze.

and the 1966 bearing tree

A Fir, 12 ins. diam., bears S. 31.53' W., 38.25 ft. dist., w/healed blaze.

and bearing tree, origin unknown

A Fir, 21 ins. diam., bears S. 79 10' W., 6.46 ft. dist., w/healed blaze.

Point for the one-quarter Section corner of Sections 13 and 24, at proportionate distance, there is no remaining evidence of the original corner point.

At the corner point, set a galvanized iron post, 2 ins. diam. 28 ins. long, 22 ins. in the ground, in a mound of stone, 2-1/2 ft. base to top of brass cap mkd.

T36S R3E  
1/4— S13  
      | S24  
RLS 1809  
1980

## CORNERS ACCEPTED FOR CONTROL:

The Section corner common to Sections 12 and 13, Township 36 South, Range 3 East, Willamette Meridian.

At the corner location, found a standard Bureau of Land Management monument, an iron post, 2-1/2 ins. diam., in a mound of stone 2 ft. base, 1-1/2 ft. high, with brass cap mkd.

T36S  
R3E R4E

S12 | S7  
S13 |

1962

from which the remains of the original bearing tree

A cedar, 28 ins. diam., bears S. 73 01' W., 17.30 ft. dist., w/healed blaze.

and the 1925 bearing tree

A Fir, 31 ins. diam., bears N. 9 56' W., 26.84 ft. dist., w/healed blaze.

and the 1962 bearing tree

A Fir, 23 ins. diam., bears N. 70 03' W., 45.70 ft. dist., w/healed blaze.

The one-quarter Section corner common to Section 7 only, Township 36 South, Range 4 East, Willamette Meridian. (not a control corner)

At the corner location, found a standard Government Land Office iron post, 1 inch in diam., projecting 8 ins. above the ground, w/brass cap mkd.

1/4 S7  
|  
1925

from which the 1925 bearing trees

A Fir, 19 ins. diam., bears N. 60 28' E., 14.3 ft. dist., w/healed blaze.

A Fir, 24 ins. diam., bears S. 0 09' E., 9.10 ft. dist., w/healed blaze.

and bearing tree, origin unknown

A Fir, 9 ins. diam., bears S. 55 04' W., 2.9 ft. dist., w/healed blaze.

The one-quarter Section corner common to Section 12 only, Township 36 South, Range 3 East, Willamette Meridian.

At the corner location, found a standard Bureau of Land Management iron post, 2-1/2 ins. diam., in a mound of stone, 3 ft. base, 1-1/2 ft. high, w/brass cap mkd.

T36 S  
R3E |  
1/4 S12 |  
1962

from which the remaining original bearing tree

A Fir, 20 ins. diam., bears N. 72 32' W., 6 ft. dist., w/healed blaze

and the remains of the 1925 bearing tree

A rotted Fir snag, 26 ins. diam., bears S. 22 45' W., 21.22 ft. dist., w/scribe mks. visible on open blaze.

Continuing easterly from the one-quarter temporary point, on a random traverse, between Sections 13 and 24, to the corner common to Sections 13 and 24, on the east boundary of the Township. Thence, ran a closing traverse to a point on the south boundary of Section 12.

A Solar observation was taken at the beginning of the Resurvey on the east boundary of Section 12 and later on the closing line of Section 13. These observations agree with each other within one minute.

The Section Lines traversed were trued, marked and posted.

Equipment Used:

20" transit and electronic distance meter



NARRATIVE TO COMPLY WITH OREGON  
REVISED STATUTES PARAGRAPH 209.250

Survey for: Rogue River National Forest  
P.O. Box 520  
Medford, Oregon 97501

Location: Sections 12 and 13, Township 36 South, Range 3 East,  
Willamette Meridian, Jackson County, Oregon

Basis of Bearing: Solar observation

Purpose: To establish property corners and mark and post  
National Forest ownership bounding Section 12 and  
within Section 13.

Procedure: The Section and one-quarter Section corners on the  
boundaries of Section 12 and on the west and south  
boundaries of Section 13, were re-monumented from  
original evidence with iron posts and brass caps by  
the Bureau of Land Management and the Government  
Land Office, except for the one-quarter Section  
corner of Sections 1 and 12 and the one-quarter  
Section corner of Sections 13 and 24, which were  
set by a single proportionate distance, as a result  
of this Dependent Resurvey.

Beginning at the corner common to Sections 12 and 13,  
on the east boundary of the Township, I ran a random  
traverse, northerly, tying in the double set of corners  
on the east boundary of Section 12, to the corner common  
to Sections 1 and 12.

Coming back to the corner common to Sections 12 and 13,  
I ran a random traverse, westerly, between Sections  
12 and 13, tying in the one-quarter Section corner and  
the corner to Sections 11, 12, 13 and 14.

I then ran westerly from the corner common to Sections  
1 and 12, on a random traverse, between Sections 1 and  
12, to the vicinity of the one-quarter Section corner,  
of Sections 1 and 12, where a diligent search was made  
for original evidence of the corner point. There remain-  
ing no original evidence, I set a temporary point, and  
later set the one-quarter corner at single proportionate  
distance and midway between the Section corners.

Thence, continuing from the temporary one-quarter corner,  
westerly, to the corner of Sections 1, 2, 11 and 12.  
Thence, southerly, on a random traverse between Sections  
11 and 12, tying in the one-quarter Section corner and  
the corner of Sections 11, 12, 13 and 14, to close the  
traverse around Section 12.

Thence, I ran southerly between Sections 13 and 14,  
on a random traverse, tying in the one-quarter Section  
corner and the corner of Sections 13, 14, 23 and 24.  
Thence, easterly, on a random traverse between Sections  
13 and 24, to the vicinity of the one-quarter Section  
corner of Sections 13 and 24, where a diligent search  
was made for original evidence of the corner point.  
There remaining no original evidence, I set a temporary  
point and later set the one-quarter corner at proportion-  
ate distance and midway between the Section corners.