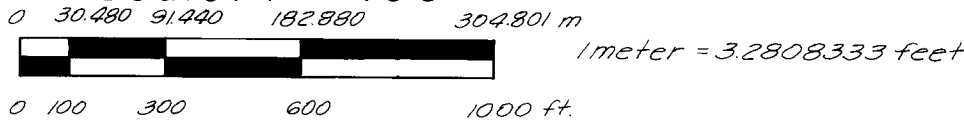


# SURVEY FOR U.S. FOREST SERVICE

## SECTION 26, T.40S., R.2W., W.M., JACKSON COUNTY, OREGON

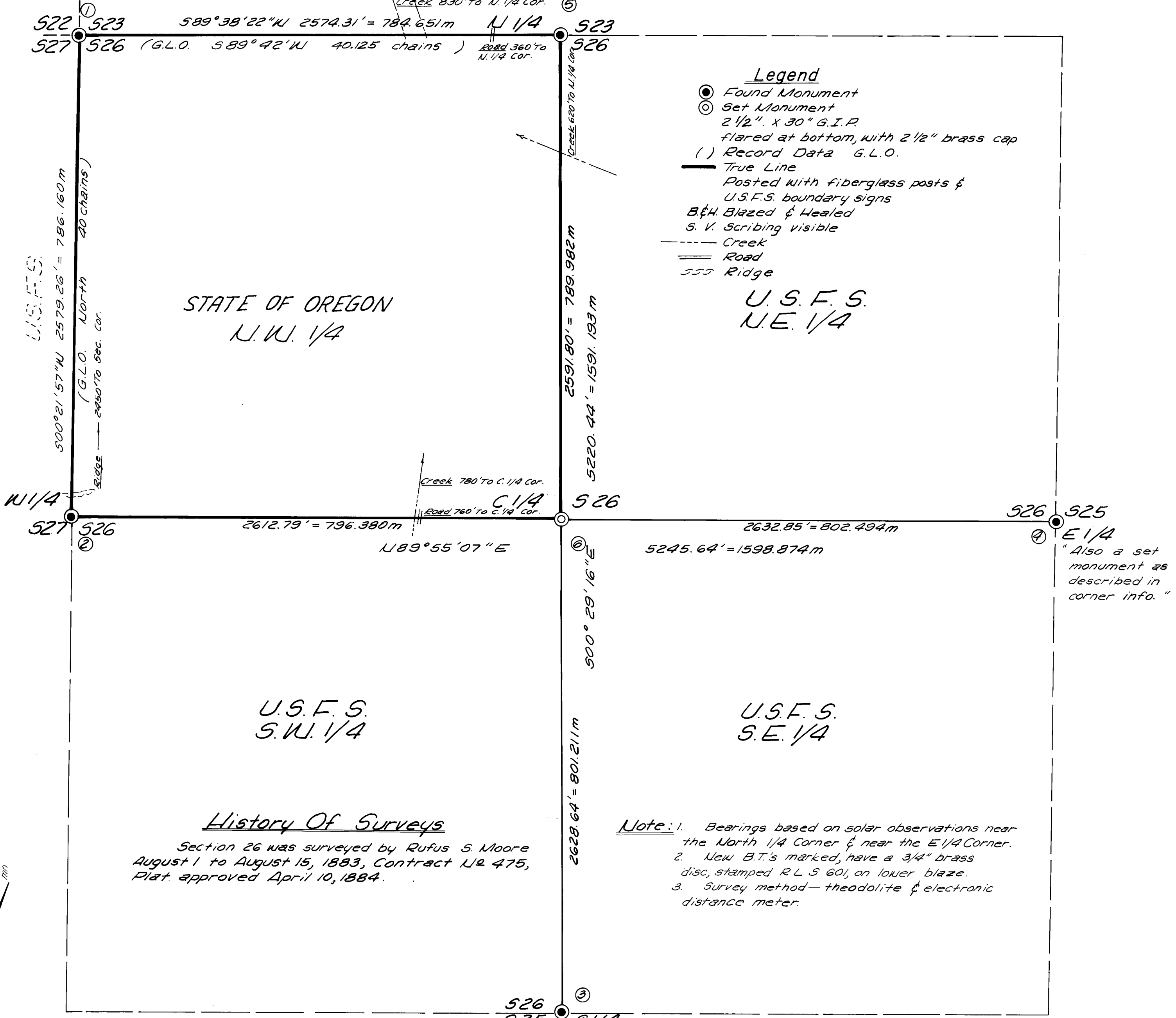
June, 1980

Scale: 1" = 400'



U.S.F.S.

Creek 720' to N. 1/4 Cor.  
Creek 830' to N. 1/4 Cor.



- Legend**
- ⊙ Found Monument
  - ⊙ Set Monument
  - 2 1/2" x 30" G.I.P. flared at bottom, with 2 1/2" brass cap
  - ( ) Record Data G.L.O.
  - True Line
  - Posted with fiberglass posts & U.S.F.S. boundary signs
  - B&H Blazed & Healed
  - S.V. Scribing visible
  - Creek
  - == Road
  - Ridge

STATE OF OREGON  
N.W. 1/4

U.S.F.S.  
N.E. 1/4

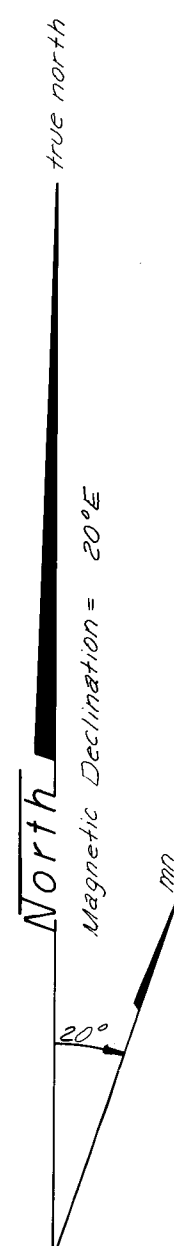
U.S.F.S.  
S.W. 1/4

U.S.F.S.  
S.E. 1/4

History Of Surveys

Section 26 was surveyed by Rufus S. Moore August 1 to August 15, 1883, Contract No 475, Plat approved April 10, 1884.

- Note:**
1. Bearings based on solar observations near the North 1/4 Corner & near the E 1/4 Corner.
  2. New B.T.'s marked, have a 3/4" brass disc, stamped R.L.S. 601, on lower blaze.
  3. Survey method—theodolite & electronic distance meter.



**① N.W. Corner Section 26**

Found B.L.M. brass cap in mound of stones  
**B.T.'s Found**

- 14" D. Fir, N.60°E, 15.7', B&H
- 24" D. Fir, S.19°W, 13.6', B&H
- 18" D. Fir, S.10°E, 10.4', B&H
- 32" D. Fir, N.12°W, 31.5', B&H

T405 R2W  
1/4 522 523  
527 526  
1975  
Cadastral Survey

**② West 1/4 Corner Section 26**

Found B.L.M. brass cap in mound of stones  
**B.T.'s Found**

- 36" W. Fir, N.74°W, 7.3', B&H
- 5" W. Fir, S.38°W, 13.5', S.V.
- 10" W. Fir, S.66 1/2°E, 39.5', S.V.
- 18" Fir Snag 582 1/2°E, 26.0', Blazed & Scribed (Windfall portion of tree)

T405 R2W  
1/4 527 526  
1975  
Cadastral Survey

**③ South 1/4 Corner Section 26**

Found B.L.M. brass cap in mound of stones  
**B.T.'s Found**

- 34" D. Fir, S.63°W, 7.6', B&H
- 16" D. Fir, S.08°E, 18.3', S.V.
- 18" D. Fir, N.75°E, 10.4', S.V.

T405 R2W  
1/4 526  
535  
1975  
Cadastral Survey

**④ East 1/4 Corner Section 26**

Found 6" x 8" x 20" rock with "1/4" on West face. Replaced rock with 2 1/2" x 30" G.I.P. & brass cap marked as shown.  
**B.T. Found**

- 24" D. Fir Stump, shows evidence of old axe mark, no scribing
- Bears S.70°W, 7.8' to center

**Set new B.T.'s**

- 24" W. Fir, S.40°25'W, 90.5'
- Scribed-T405 R2W 1/4 526 BT
- 18" W. Fir, S.45°E, 35.5'
- Scribed T405 R2W 1/4 525 BT

T405 R2W  
1/4 526 525  
1980  
R.L.S. 601

**⑤ North 1/4 Corner Section 26**

Found B.L.M. brass cap in mound of stones  
**B.T.'s Found**

- 16" D. Fir, N.16°E, 23.8', S.V.
- 8" D. Fir, S.22°W, 15.1', B&H.

T405 R2W  
1/4 523  
526  
1975  
Cadastral Survey

**⑥ Center 1/4 Corner Section 26**

Brass cap set marked as shown.  
**B.T.'s Set**

- 12" N. Fir, S.85°30'W, 73.3'
- Scribed T405 R2W C 1/4 526 BT
- 8" W. Fir, S.16°35'W, 6.2'
- Scribed T405 R2W C 1/4 526 BT

T405 R2W  
C 1/4 526  
1980  
R.L.S. 601

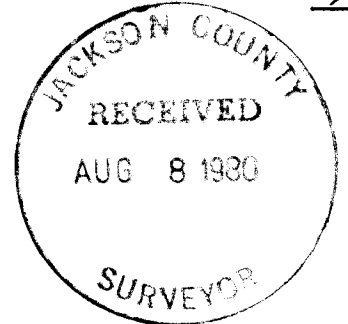
I, Malcolm N. Clark, a registered land surveyor in the state of Oregon, hereby certify that this plat and the notes hereon are a correct representation of a survey I performed during June, 1980, for the U.S. Forest Service, in accordance with the statutes of the State of Oregon and with the Articles of my contract.

*Malcolm N. Clark*

MALCOLM N. CLARK  
REGISTERED LAND SURVEYOR  
OREGON LICENSE 601

REGISTERED PROFESSIONAL LAND SURVEYOR  
*Malcolm N. Clark*

OREGON  
JULY 12, 1903  
MALCOLM N. CLARK  
601



Accepted and approved for the U.S. Forest Service

*Harold L. [Signature]* 8-8-80  
C.O.R. DATE

U.S.F.S. CONTRACT NO 53-04HI-O-7908N  
CONTRACTOR IDENTIFICATION  
Chickering-Green Empire, Inc.  
360 "H" Street  
Grants Pass, Oregon

T40S R2W  
 S26  
 1/4  
 S35  
 1975  
 Cadastral Survey

A standard BLM brass cap in a mound of stones, with a brass cap marked as shown, projecting 6" above the ground. The original corner stone is along side the iron pipe.

Bearing Trees found:  
 34" D. Fir, bears S63°W, 7.6 feet, blazed and healed  
 16" D. Fir, bears S08°E, 18.3 feet, scribing visible  
 18" D. Fir, bears N75°E, 10.4 feet, scribing visible

T40S R2W  
 S23  
 1/4  
 S26  
 1975  
 Cadastral Survey

A standard BLM monument, in a mound of stones with a brass cap marked as shown, projecting 6 inches above the ground. The original cornerstone is along side the iron pipe.

Bearing Trees found:  
 16" D. Fir, bears N16°E, 23.8 feet, scribing visible  
 8" D. Fir, bears S22°W, 15.1 feet, blazed and healed

Corners Set:  
 T40S R2W  
 1/4  
 S26 | S25  
 1980  
 RLS 601

Found a 6" x 8" x 20" rock, with 1/4 on West face. At the corner point, set a 2 1/2" x 30" G.I.P., 24" in the ground, with a 2 1/2" brass cap marked as shown on corner diagram. The original corner stone is buried alongside the iron pipe.

Bearing Trees found:  
 24" D. Fir stump, bears S70°W, 7.8 feet, no scribing, but with remnants of the lower blaze just below the top of the stump. Axe work visible on the blaze.

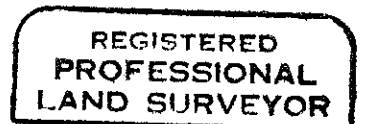
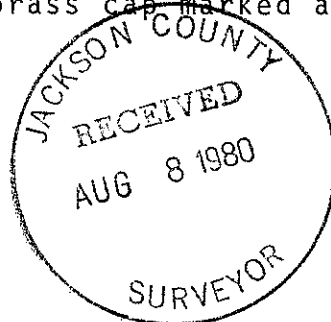
Marked new Bearing Trees as follows:  
 24" W. Fir, bears S40° 25' W, 90.5 feet, scribed T40S R2W 1/4 S26 BT  
 18" W. Fir, bears S45° 00'E, 35.5 feet, scribed T40S R2W 1/4 S25 BT  
 Placed BT tags on BT's and 3/4" brass washer stamped RLS 601 on lower blaze.

T40S R2W  
 1/4 S26  
 1980  
 RLS 601

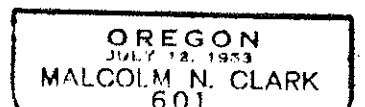
Marked Bearing Trees as follows:  
 12" W. Fir, bears S85° 30'W, 73.3 feet, scribed T40S R2W 1/4 S26 BT.  
 8" W. Fir, bears S16° 35'W, 6.2 feet, scribed T40S R2W 1/4 S26 BT  
 Put a 3/4" brass washer stamped RLS601 on lower blazes of BT's.

Set a 2 1/2" G.I.P. 26" in the ground in a mound of stones, with a 2 1/2" brass cap marked as shown.

Date of Survey: August 1, 1980



*Malcolm N. Clark*



NARRATIVE TO COMPLY O.R.S. 209.250

Survey for: U.S. Forest Service SURVEY NUMBER 8477  
 Rogue River National Forest  
 Medford, Or. 97501

Survey by: Chickering-Green Empire, Inc.  
 360 S.E. "H" Street  
 Grants Pass, Oregon 97526  
 (Malcolm N. Clark, RLS 601)

Location: Section 26, T40S, R2W, W.M.

Purpose: To establish the center 1/4 corner of Section 26 and to post and mark the boundary of the N.W. 1/4 of Section 26.

Equipment: Wild T-16 and K&E Auto Ranger.

Procedure: A closed traverse was run to tie all controlling corners in Section 26. Bearings are based on a solar observation near the North 1/4 corner of Section 26. The section was then subdivided according to the BLM Manual for the Survey of Public Lands. Property lines were then blazed and posted with fiberglass fence posts and U.S.F.S. Boundary Signs.

Corners Found:

T40S R2W

S22 | S23

S27 | S26

1975

Cadastral Survey

A standard BLM monument, in a mound of stones, with a brass cap marked as shown, projecting 6 inches above the ground. The original corner stone is along side the iron pipe.

Bearing Trees found:

- 14" D.Fir, bears N60°E, 15.7 feet, blazed and healed
- 18" D. Fir, bears S10°E, 10.4 feet, blazed and healed
- 24" D. Fir, bears S19°W, 13.6 feet, blazed and healed
- 32" D. Fir, bears N12°W, 31.5 feet, blazed and healed

T40S R2W

1/4

S27 | S26

1975

Cadastral Survey

A standard BLM monument cap, in a mound of stones, with a brass cap marked as shown in corner diagram, projecting 4" above the ground. The original corner stone is along side the iron pipe.

Bearing Trees found:

- 36" W. Fir, bears N74°W, 7.3 feet, blazed and healed
  - 5" W. Fir, bears S38°W, 13.5 feet, scribing visible
  - 10" W. Fir, bears S66 1/2°E, 39.5 feet, scribing visible
  - 18" W. Fir, stump, 4 feet high, bears S82 1/2°E, 26.0 feet
- The tree is broken off below the blaze, the scribed portion of the tree lies to the NE of the stump.