

2/1
11/12

1/6
12/7

SECTION CORNER
Fd. 2 1/2" I. Pipe with Brass Cap
set by BLM in 1975

HISTORY OF SURVEYS:

The East line of Township 40 South, Range 2 West was surveyed by A. O. Eckelson under Contract No. 328, dated June 17, 1879. The Subdivisional lines were surveyed by Rufus S. Moore under Contract No. 475, dated July 3, 1883. The corners of Section 12 have been remonumented by the Bureau of Land Management and the Jackson County Surveyor and are more particularly described in the attached survey narrative.

GENERAL NOTES:

This survey was executed using a Wild T-16ED Theodolite, a Wild T-2 Theodolite and a MAC II Electronic Distance Measuring instrument. All bearings are referred to the true meridian based upon separate solar observations taken at the SW and SE Corners of Section 12. The Range line and the East half of the South line of Section 12 were blazed and posted using right angle offsets from traverse points. The West half of the South line of Section 12 was surveyed as true line closing up a traverse. All trees within three feet of true line were blazed with a hack mark being placed above and below each blaze. Trees on Forest Service land were quarter blazed while those on private land were given a single facing blaze. All blaze and hack marks were painted red. National Forest Boundary signs were placed on posts within one foot of true line and spaced intervisibly, but not more than 300 feet apart, along the property boundaries. See the attached survey narrative for additional information.

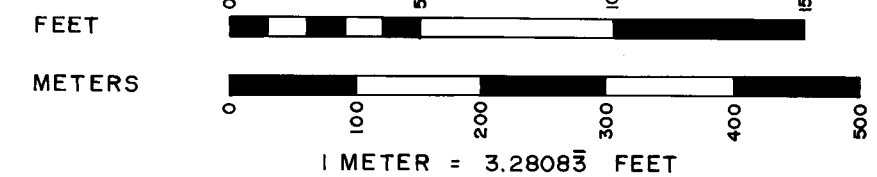
CERTIFICATION:

I, Richard L. Templin, Jr., Registered Professional Land Surveyor No. 1354 of the State of Oregon, hereby certify that this plat and the attached narrative are a correct representation of a survey which I executed from October, 1979 to June, 1980 for the U. S. Forest Service in accordance with Oregon State Statutes and with the provisions of Forest Service Cadastral Survey Contract No. 53-04HI-9-7634N

Richard L. Templin, Jr.
RICHARD L. TEMPLIN, JR.
P.L.S. No. 1354, Oregon

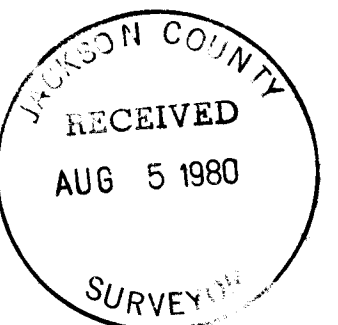
LEGEND:

- ⊙ Monument found as shown
- 2" Iron Pipe set with a brass cap
- National Forest Boundary Line, blazed and posted



APPROVED:

Richard L. Templin, Jr.
U. S. Forest Service C.O.R. August 5, 1980 Date



SECTION 12
PRIVATE LAND

1/4 CORNER
Fd. 2 1/2" I. Pipe with Brass Cap set by BLM in 1975

U.S.(U.S.F.S.)

MEAN MAG. DECL. = 20°E

12/7
13/18

SECTION CORNER
Set 2" I. Pipe with Brass Cap

5287.77'
N 87° 25' 39" E

1/4 CORNER
Set 2" I. Pipe with Brass Cap

2643.885'
(1883 Rec. = West, 40.00 ch.)

SECTION 13
U.S.
(U.S.F.S.)

U.S.(U.S.F.S.)

N 00° 11' 39" W
2582.08'
(1879 Rec. = South, 40.00 ch.)

R2W
R1W

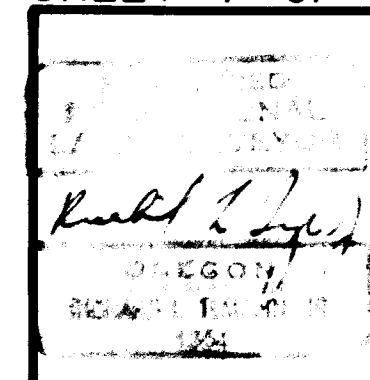
1/4 CORNER
Fd. 1" I. Pipe with Brass Cap set by County Surveyor in 1976

SECTION CORNER
Fd. 2 1/2" I. Pipe with Brass Cap set by BLM in 1975

11/12
14/13

2643.885'
(1883 Rec. = West, 40.00 ch.)

SHEET 1 OF 3



RICHARD L. TEMPLIN
CONSULTING ENGINEER
321 NW "A" STREET 476-7114 GRANTS PASS, OREGON

DEPENDENT RESURVEY
SECTIONS 12 & 13, T. 40S., R. 2 W., W.M.
LOCATED IN
JACKSON COUNTY, OREGON
Surveyed For: Rogue River National Forest, Medford, Oregon
Scale: 1" = 500'
July 1, 1980

T. 40S., 2W., 12

8472

and MAC II E.D.M. The bearings are referred to the true meridian based upon several separate solar observations made at different locations, as stated on the accompanying plats.

The boundaries of the National Forest lands were marked with fiberglass posts and "Forest Boundary" signs placed within one foot of true line. These are set intervisibly but not more than 300 feet apart. All trees within three feet of true line were blazed. A hack mark was placed above and below each blaze. Trees on Forest Service land were quarter blazed while those on private land were given a single blaze facing towards true line. All blazes and hack marks were painted red. The surveying, monumenting, and line marking were carried out per the specifications of U.S.F.S. Cadastral Survey Contract No. 53-04HI-9-7634N.

REGISTERED
PROFESSIONAL
LAND SURVEYOR

Richard L. Templin, Jr.

OREGON
SEPTEMBER 21, 1977
RICHARD L. TEMPLIN, JR.
1354

JACKSON COUNTY
RECEIVED
AUG 5 1980
SURVEYOR

- An Incense-cedar, 9 ins. diam., bears S 86°16'W, 42.76 feet,
 scribing visible on partially healed blaze.
 An Incense-cedar, 9 ins. diam., bears N 37°51' W, 67.98 feet,
 scribing visible on partially healed blaze.

Thence, North 89°56'47" East, 2649.63 feet to the Quarter Corner common to Sections 5 and 8, T. 40 S., R. 1 W., which is monumented with a one inch diameter iron pipe, extending 9 inches above the ground, as set by the Jackson County Surveyor in 1979, with a brass cap stamped:

JACKSON COUNTY

T40S R1W
 5
 1/4S_____
 8
 1979

From which:

The remaining Original Bearing Tree scribed by Rufus S. Moore, per Contract No. 475, in 1883:

- A Black Oak stump hole with sprouts, diam. indeterminate, bears N 41°35'W, 47.23 feet. A dead and down Black Oak, 14 ins. diam., with scribing visible on opened blaze lies approx. 84 feet downhill.

Bearing trees scribed by the County Surveyor, in 1979:

- A Douglas-fir, 22 ins. diam., bears N 44°27' E, 22.79 feet, scribing "CS BT" visible on recent blaze.
 A Douglas-fir, 13 ins. diam., bears S 65°43' E, 65.34 feet, scribing "CS BT" visible on recent blaze.

Thence, North 89°12'16" East, 2582.25 feet to the Section Corner common to Sections 4, 5, 8, and 9, T. 40 S., R. 1 W., which is monumented with a one inch diameter iron pipe, extending 6 inches above the ground, as set by the Jackson County Surveyor in 1973, with a brass cap stamped:

T40S R1W

S5	S4
S8	S9

C.S.
 1973

From which:

The remaining Original Bearing Tree scribed by Rufus S. Moore, per Contract No. 475, in 1883:

- A Ponderosa Pine, 20 ins. diam., bears S 22°08'W, 66.40 feet, scribing visible on opened blaze.

Bearing trees scribed by the County Surveyor, in 1973:

- A Douglas-fir, 10 ins. diam., bears N 25°50'E, 24.30 feet.
 A Madrone, 16 ins. diam., bears S 77°20'E, 49.17 feet.
 A Douglas-fir, 14 ins. diam., bears S 49°35'W, 18.40 feet.
 A Madrone, 12 ins. diam., bears N 47°15'W, 18.25 feet.

The triangulation portion of this survey was executed with a Wild T-2 Theodolite and a MAC II Electronic Distance Measuring instrument. The traverses and true lines were surveyed with a Wild T-16ED Theodolite

Thence, I commence surveying at the Quarter Corner common to Sections 7 and 8, T. 40 S., R. 1 W., at which point I found a one inch diameter pipe, bent, with brass cap missing from recent logging. I remonument the corner point with a 2 inch diameter iron pipe, 32 inches long, extending 11 inches above the ground. This pipe was set from bearing trees described by Charles H. Hurst, L.S. 483, per Survey No. 4890 and has a brass cap stamped:

T40S R1W
 1/4 S7 | S8
 PLS1354
 1979

From which:

The remaining Original Bearing Tree scribed by Rufus S. Moore, per Contract No. 475, in 1883:

A Ponderosa Pine, 31 ins. diam., bears S 42°13' W, 7.26 feet to face of opened blaze, 7.06 feet to nail in side of tree, scribing visible on opened blaze.

Bearing tree scribed by Charles H. Hurst, L.S. 483, per Survey No. 4890, in 1972:

A Douglas-fir stump, 11 ins. diam., 11 ins. high, bears N 26° 17' W, 22.30 feet, no scribing visible.

Scribe a new bearing tree:

A Douglas-fir, 11 ins. diam., bears N 83°52' E, 8.08 feet, scribed "1/4S8 PLS1354 BT" nailed brass washer stamped "PLS 1354" to face of lower blaze.

Thence, North 00°01'59" West, 2613.04 feet to the Section Corner common to Sections 5, 6, 7 and 8, T. 40 S., R. 1 W., which is monumented with a one inch diameter iron pipe, extending 4 inches above the ground, as set by the Jackson County Surveyor in 1970, with a brass cap stamped:

T40S R1W
 SEC ——— | ——— COR
 6 | 5
 7 | 8
 C.S.
 1970

From which:

The remaining Original Bearing Trees scribed by Rufus S. Moore, per Contract No. 475, in 1883:

A Douglas-fir, dead and standing, 32 ins. diam., bears N 65°15' E, 38.44 feet, bark scribing visible.

A Douglas-fir stump, 18 ins. diam., 6 ins. high, bears S 38° 39' W, 25.62 feet, no scribing visible.

A Madrone, 21 ins. diam., bears N 56°47' W, 30.15 feet, scribing visible on rotted blaze.

Bearing trees scribed by the County Surveyor, in 1970:

An Incense-cedar, 5 ins. diam., bears N 56°16' W, 32.60 feet, scribing visible on partially healed blaze.

A White Fir, 5 ins. diam., bears S 51°40' E, 5.84 feet, scribing visible on partially healed blaze.

Thence, continue South $00^{\circ}23'07''$ West, 2613.665 feet to the Section Corner common to Sections 17, 18, 19 and 20, T. 40 S., R. 1 W., which is monumented with a one inch diameter iron pipe, in a mound of rock, extending 9 inches above the ground as set by the Jackson County Surveyor in 1979, with a brass cap stamped:

JACKSON COUNTY 1979

T40S R1W

18	17
19	20

From which:

Remaining Original Bearing Trees scribed by Rufus S. Moore, per Contract No. 475, in 1883:

A Douglas-fir, 52 ins. diam., bears N $9^{\circ}50'$ E, 24.00 feet, blaze healed.

A White Fir snag, 37 ins. diam., 25 feet high, bears S $83^{\circ}43'$ E, 14.71 feet, blaze healed.

A Douglas-fir, 27 ins. diam., bears S $60^{\circ}27'$ W, 11.75 feet, blaze healed.

Bearing trees scribed by the County Surveyor, in 1979:

A White Fir, 10 ins. diam., bears S $29^{\circ}52'$ E, 20.25 feet, scribing "CS BT" visible on recent blaze.

A Douglas-fir, 14 ins. diam., bears N $36^{\circ}17'$ W, 29.79 feet, scribing "CS BT" visible on recent blaze.

Thence, South $89^{\circ}41'30''$ West, 2610.49 feet to the Quarter Corner common to Sections 18 and 19, T. 40 S., R. 1 W., which is monumented with a one inch diameter iron pipe, extending 5 inches above the ground as set by the Jackson County Surveyor in 1973, with a brass cap stamped:

T40S R1W

18	19
1/4S	CS
19	1973

From which:

Original Bearing Trees scribed by Rufus S. Moore, per Contract No. 475, in 1883:

A Douglas-fir, 55 ins. diam., bears N $85^{\circ}01'$ E, 64.47 feet, scribing visible on opened blaze.

A Bigleaf Maple, rotted flush with ground, 7 ins. diam., bears S $58^{\circ}53'$ W, 60.00 feet, segment of tree lies downhill from stump with axe marks on opened blaze, no scribing visible.

Bearing tree scribed by the County Surveyor, in 1973:

A White Fir, 17 ins. diam., bears N $13^{\circ}41'$ W, 93.21 feet, scribing "CS BT" visible on partially healed blaze.

Thence, North $00^{\circ}45'08''$ East on the N/S Centerline of Section 18, 5183.76 feet to the Quarter Corner common to Sections 7 and 18, T. 40 S., R. 1 W., hereinbefore described.

above the ground, as set by Charles H. Hurst, L.S. 483, per Survey No. 4890, with a brass cap stamped:

T40S R1W

S7	S8
S18	S17

RS483 1972

From which:

Original Bearing Trees scribed by Rufus S. Moore, per Contract No. 475, in 1883:

A rotten Douglas-fir stump, 30 ins. diam., 3 ft. high, bears N 45°02'E, 49.80 feet, no scribing visible.

A rotten Douglas-fir stump, 24 ins. diam., 4 ft. high, bears S 84°26'E, 27.54 feet, axe work visible, no scribing visible.

A rotten Douglas-fir stump shell, 20 ins. diam., bears S 56°01' W, 10.28 feet, no scribing visible.

A rotten Douglas-fir stump, 10 ins. diam., bears N 57°12'W, 18.54 feet, scribe marks "T40S R1W S7" visible on slab of tree.

Bearing trees scribed by Charles H. Hurst, L.S. 483, per Survey No. 4890, in 1972:

A White Fir, 8 ins. diam., bears S 72°47'E, 35.69 feet, blaze healed.

A White Fir, 12 ins. diam., bears S 50°34' W, 21.34 feet, scribing visible on partially healed blaze.

A White Fir, 13 ins. diam., bears N 41° 15' W, 19.92 feet, blaze healed.

Scribe a new bearing tree:

A Douglas-fir, 7 ins. diam., bears N 58°54" E, 49.79 feet, scribed "T40S R1W S8 PLS 1354 BT" with brass washer stamped "PLS 1354" nailed to face of lower blaze.

Thence, South 00°23'07" West, 2613.665 feet at which point I set the Quarter Corner common to Sections 17 and 18, T. 40 S., R. 1 W., at proportionate distance. A diligent search was made for evidence of the original corner, but none was found. At the computed position for said Quarter Corner, I set a 2 inch diameter iron pipe, 32 inches long, extending 6 inches above the ground, with a brass cap stamped:

T40S R1W

1/4	S18	S17
-----	-----	-----

PLS1354
1980

From which, scribe new bearing trees:

A Bigleaf Maple, 9 ins. diam., bears S 60°00' E, 9.16 feet, scribed "1/4S17 PLS1354 BT" with brass washer stamped "PLS1354" nailed to face of lower blaze.

A White Fir, 6 ins. diam., bears S 24°34' W, 22.74 feet, scribed "1/4S18 PLS1354 BT" with brass washer stamped "PLS1354" nailed to face of lower blaze.

"1/4S13 T40S R2W PLS 1354 BT" with brass washer stamped "PLS1354" nailed to face of lower blaze.

A Ponderosa Pine, 14 ins. diam., bears N 61°05' W, 49.15 feet, scribed "1/4S12 T40S R2W PLS 1354 BT" with brass washer stamped "PLS1354" nailed to face of lower blaze.

Thence, continue South 87°25'39" West, 2643.885 feet to the Section Corner common to Sections 11, 12, 13 and 14, T. 40 S., R. 2 W., which is monumented with a 2 1/2 inch diameter iron pipe, extending 6 inches above the ground, as set by the BLM in 1975, with a brass cap stamped:

T40S R2W

S11	S12
S14	S13

1975

From which:

The only remaining Original Bearing Tree scribed by Rufus S. Moore, per Contract No. 475, in 1883:

A Ponderosa Pine, 33 ins. diam., bears S 29°04'W, 21.41 feet scribing visible on opened blaze.

Bearing trees scribed by the BLM, in 1975:

A Douglas-fir, 11 ins. diam., bears N 61°35' E, 11.83 feet, scribing visible on partially healed blaze.

A Douglas-fir, 23 ins. diam., bears S 40°50'E, 32.76 feet, blaze pitched over.

A Douglas-fir, 9 ins. diam., bears N 46°34' W, 10.42 feet, blaze pitched over.

Thence, I again return to the Southeast Corner of Section 12, T. 40 S., R. 2 W., hereinbefore described, and survey North 88°42'43" East, 3093.83 feet on a calculated bearing and distance, at which point I set the Quarter Corner common to Sections 7 and 18, T. 40 S., R. 1 W., at proportionate distance. A diligent search was made for evidence of the original corner, but none was found. At the computed position for said Quarter Corner, I set a 2 inch diameter iron pipe, 32 inches long, extending 4 inches above the ground, with a brass cap stamped:

T40S R1W

S7

1/4 _____

S18

PLS1354

1980

From which, scribe new bearing trees:

A Madrone, 12 ins. diam., bears N 72°57' E, 14.65 feet, scribed "1/4S7 PLS1354 BT" with brass washer stamped "PLS1354" nailed to face of lower blaze.

A Douglas-fir, 7 ins. diam., bears S 9°42' E, 18.20 feet, scribed "1/4S18 PLS1354 BT" with brass washer stamped "PLS1354" nailed to face of lower blaze.

Thence, continue North 88°42'43" East, 2578.20 feet to the Section Corner common to Sections 7, 8, 17 and 18, T. 40 S., R. 1 W., which is monumented with a one inch diameter iron pipe, extending 5 inches

- nailed to face of lower blaze.
 A Douglas-fir, 8 ins. diam., bears S 60°58' W, 30.71 feet, scribed
 "S13 T40S R2W PLS1354 BT" with brass washer stamped "PLS 1354"
 nailed to face of lower blaze.
 A Douglas-fir, 5 ins. diam., bears N 27°58' W, 9.77 feet, scribed
 "S12 T40S R2W PLS1354 BT" with brass washer stamped "PLS 1354"
 nailed to face of lower blaze.

Thence, continue South 00°11'39" East, 2582.08 feet to the Quarter Corner common to Section 18, T. 40 S., R. 1 W., and Section 13, T. 40 S., R. 2 W., which is monumented with a one inch diameter iron pipe extending 9 inches above the ground, as set by the Jackson County Surveyor in 1976, with a brass cap stamped:

JACKSON COUNTY

```

      T40S
      1/4
      |
    13 · 18
      |
    R2W  |  R1W
      1976
  
```

From which:

Original Bearing Trees scribed by A.O. Eckelson, per Contract No. 328, in 1879:

- A Ponderosa Pine stump, 60 ins. diam., 3 ft. high, bears S 38°27' E, 15.20 feet, scribing visible on upper and lower blaze.
 A Ponderosa Pine, 43 ins. diam., bears N 42°35' W, 17.37 feet, scribing visible on upper and lower blaze.

Bearing trees scribed by the County Surveyor, in 1976:

- A Douglas-fir, 18 ins. diam., bears N 58°57' E, 26.80 feet, scribing visible on partially healed blaze.
 A Ponderosa Pine, 21 ins. diam., bears S 25°12' W, 17.02 feet, scribing visible on partially healed blaze.

Thence, I return to the Southeast Corner of Section 12, T. 40 S., R. 2 W. hereinbefore described, and survey South 87°25'39" West, 2643.885 feet at which point I set the Quarter Corner common to Sections 12 and 13, T. 40 S., R. 2 W., at proportionate distance. A diligent search was made for evidence of the original corner, but no conclusive evidence was found. At the computed position for said Quarter Corner, I set a 2 inch diameter iron pipe, 32 inches long, extending 7 inches above the ground, with a brass cap stamped:

```

      T40S  R2W
      |
      S12
    1/4 —·—
      |
      S13
      PLS1354
      1979
  
```

From which, scribe new bearing trees:

- A Douglas-fir, 18 ins. diam., bears S 38°27' W, 30.81 feet, scribed

8472

From which:

The remaining Original Bearing Trees scribed by A.O. Eckelson, per Contract No. 328, in 1879:

A White Fir, 38 ins. diam., bears N 68°00' E, 14.05 feet, blaze healed.

A White Fir, 33 ins. diam., bears S 41°56' W, 12.79 feet, blaze healed.

Bearing trees scribed by the BLM, in 1975:

A Douglas-fir, 10 ins. diam., bears S 23°23' E, 22.58 feet, blaze pitched over.

A Douglas-fir, 18 ins. diam., bears N 56°07' W, 39.33 feet, blaze pitched over.

Thence, South 00°14'13" East, 2605.05 feet to the Quarter Corner common to Section 7, T. 40 S., R. 1 W., and Section 12, T. 40 S., R. 2 W., which is monumented with a 2 1/2 inch diameter iron pipe, extending 4 inches above the ground, as set by the BLM in 1975, with a brass cap stamped:

T40S		
R2W		R1W
1/4		
S12		S7
1975		

From which:

The remaining Original Bearing Tree scribed by A.O. Eckelson, per Contract No. 328, in 1879:

A rotten Douglas-fir stump, 23 ins. diam., 3 ft. high, bears S 86° 54' E, 1.70 feet, the center of the stump is completely rotted out, scribing visible on wood fragments lying inside stump.

Bearing trees scribed by the BLM, in 1975:

A White Fir, 5 ins. diam., bears N 75°31' E, 18.29 feet, blaze healed.

A White Fir, 12 ins. diam., bears S 87°18' W, 29.75 feet, scribing visible on partially healed blaze.

Thence, South 00°11'39" East, 2582.08 feet at which point I set the Section Corner common to Sections 7 and 18, T. 40 S., R. 1 W., and Sections 12 and 13, T. 40 S., R. 2 W., at proportionate distance. A diligent search was made for evidence of the original corner, but none was found. At the computed position for said Section Corner, I set a 2 inch diameter iron pipe, 32 inches long, extending 9 ins. above the ground, with a brass cap stamped:

T40S		
R2W		R1W
S12 S7		
S13 S18		
PLS1354		
1979		

From which, scribe new bearing trees:

A Douglas-fir, 14 ins. diam., bears N 46°41' E, 44.03 feet, scribed "S7 T40S R1W PLS1354 BT" with brass washer stamped "PLS 1354" nailed to face of lower blaze.

A White Fir, 7 ins. diam., bears S 47°48' E, 31.59 feet, scribed "S18 T40S R1W PLS 1354 BT" with brass washer stamped "PLS 1354"



RICHARD L. TEMPLIN
CONSULTING ENGINEER

8472

321 NORTHWEST A STREET
GRANTS PASS, OREGON 97526

REGISTERED ENGINEER OREGON
REGISTERED LAND SURVEYOR CALIF.

July 1, 1980

TEL. (503) 476-7114

SURVEY NARRATIVE

LOCATION: Section 12, Township 40 South, Range 2 West, and Sections 8 and 18, Township 40 South, Range 1 West of the Willamette Meridian, Jackson County, Oregon.

SURVEYED FOR: Rogue River National Forest, Medford, Oregon.

PURPOSE: To survey and mark the Rogue River National Forest boundaries per U.S. Forest Service Cadastral Survey Specifications.

HISTORY: The range line between Range 1 West and Range 2 West at Township 40 South was surveyed by A.O. Eckelson under Contract No. 328, dated June 17, 1879. The subdivisional lines of Township 40 South, Range 1 West and Township 40 South, Range 2 West were surveyed by Rufus S. Moore under Contract No. 475, dated July 3, 1883. The original government corners have since been remonumented by either the Bureau of Land Management, the Jackson County Surveyor or Charles H. Hurst, L.S. 483; as noted later in this narrative.

PROCEDURE: The East lines and the East half of the South lines of both Section 12, T. 40 S., R. 2 W., and Section 18, T. 40 S., R. 1 W. were blazed and posted by using right angle offsets from points along traverse lines. All other national forest boundary lines shown as being blazed and posted on the survey plat were surveyed as true line in the field after a triangulation survey was made to determine the position of each government corner. The government corners and the calculated bearings and distances are described as follows:

Commencing at the Section Corner common to Sections 6 and 7, T. 40 S., R. 1 W., and Sections 1 and 12, T. 40 S., R. 2 W., which is monumented with a 2 1/2 inch diameter iron pipe, extending 6 inches above the ground, as set by the BLM in 1975, with a brass cap stamped:

T40S	
R2W	R1W
S1	S6
S12	S7
1975	

SECTION CORNER
Fd. 1" I. Pipe with Brass Cap
set by County Surveyor in 1970

1/4 CORNER
Fd. 1" I. Pipe with Brass Cap
set by County Surveyor in 1979

SECTION CORNER
Fd. 1" I. Pipe with Brass Cap
set by County Surveyor in 1973

HISTORY OF SURVEYS:

All of Section 8 was originally surveyed and monumented by Rufus S. Moore under Contract No. 475, dated July 3, 1883. The corners along the North line of Section 8 were remonumented by the Jackson County Surveyor. The West Quarter Corner was remonumented by Charles H. Hurst, L.S. 483 per Survey No. 4890. The corners are more particularly described in the attached survey narrative.

GENERAL NOTES:

This survey was executed using a Wild T-16ED Theodolite, a Wild T-2 Theodolite and a MAC II Electronic Distance Measuring instrument. All bearings are referred to the true meridian based upon a solar observation taken at the NW Section Corner. The East half of the North line was blazed and posted by using right angle offsets from traverse points. All other National Forest Boundary lines were surveyed as true line in the field after the position of each corner was determined by triangulation. All trees within three feet of true line were blazed with a hack mark being placed above and below each blaze. Trees on Forest Service land were quarter blazed while those on private land were given a single facing blaze. All blaze and hack marks were painted red. National Forest Boundary signs were placed on posts within one foot of true line and spaced intervisibly, but not more than 300 feet apart, along the property boundaries. See the attached survey narrative for additional information.

CERTIFICATION:

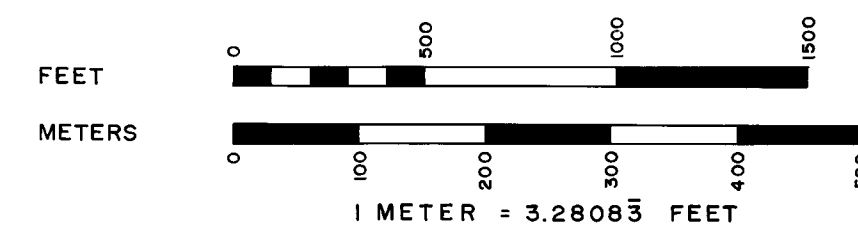
I, Richard L. Templin, Jr., Registered Professional Land Surveyor No. 1354 of the State of Oregon, hereby certify that this plat and the attached narrative are a correct representation of a survey which I executed from October, 1979 to June, 1980 for the U. S. Forest Service in accordance with Oregon State Statutes and with the provisions of Forest Service Cadastral Survey Contract No. 53-04HI-9-7634N

Richard L. Templin, Jr.
RICHARD L. TEMPLIN, JR.
P.L.S. No. 1354, Oregon

LEGEND:

- ⊙ Monument found as shown
- 2" Iron Pipe set with a brass cap
- National Forest Boundary Line, blazed and posted
- - - Line not run

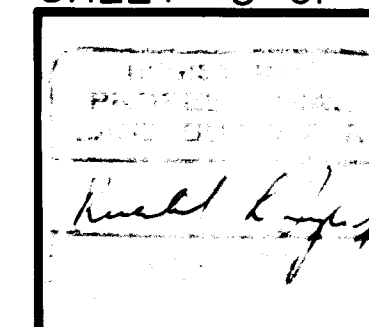
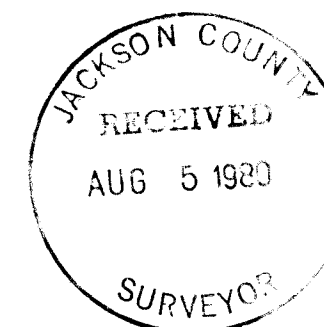
MEAN MAG.
DECL. = 20°E



APPROVED:

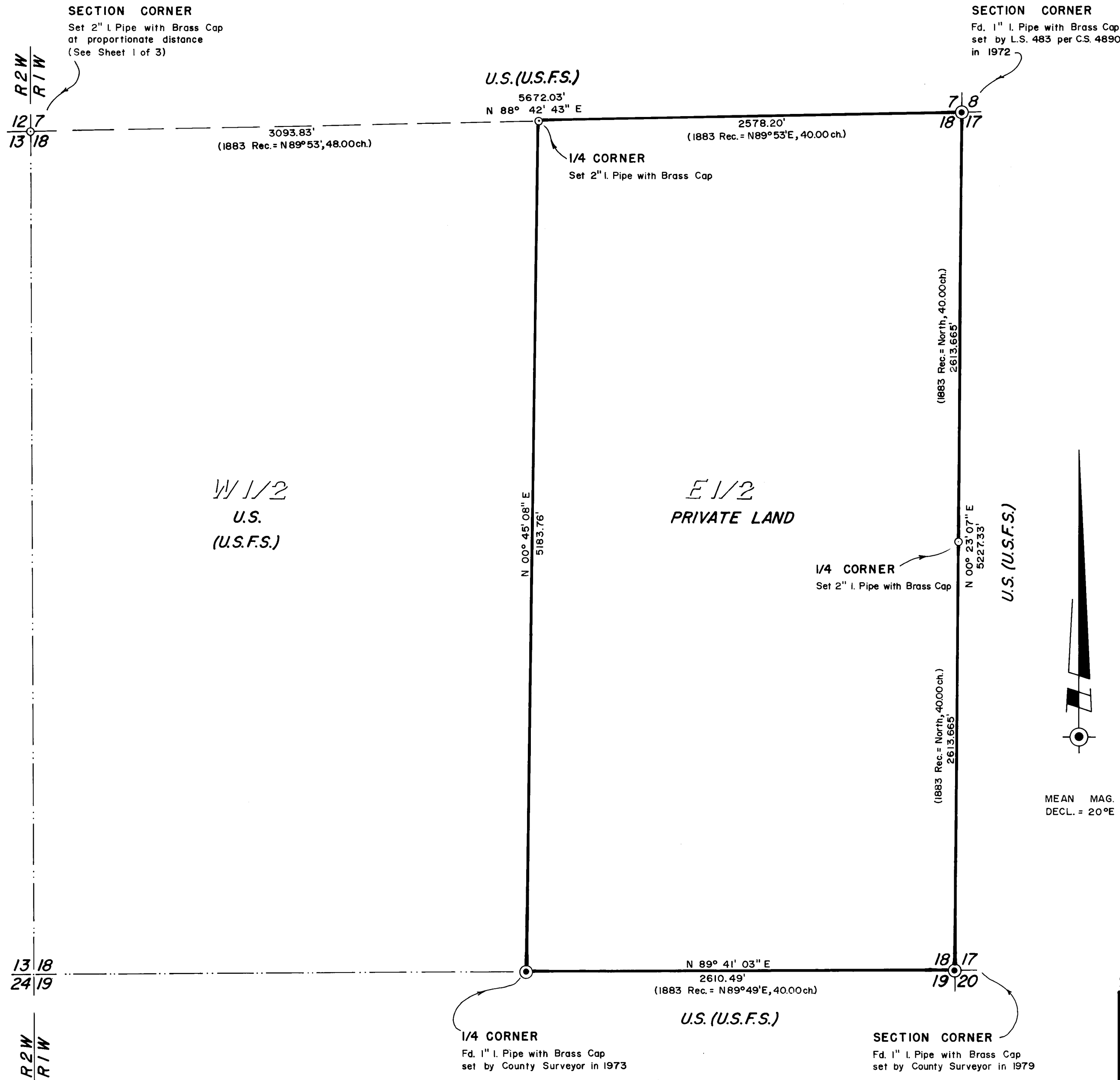
Richard L. Templin, Jr. August 5, 1980
U. S. Forest Service C.O.R. Date

SHEET 3 OF 3



RICHARD L. TEMPLIN CONSULTING ENGINEER 321 NW "A" STREET 476-7114 GRANTS PASS, OREGON	
DEPENDENT RESURVEY	
SECTION 8, T.40S., R.1W., W.M.	
LOCATED IN JACKSON COUNTY, OREGON	
Surveyed For: Rogue River National Forest, Medford, Oregon Scale: 1" = 500' July 1, 1980	

T40S, R1W, Sec 8



HISTORY OF SURVEYS:

The West line of Township 40 South, Range 1 West was surveyed by A.O. Eckelson under Contract No. 328, dated June 17, 1879. The Subdivisional lines were surveyed by Rufus S. Moore under Contract No. 475, dated July 3, 1883. The Northeast Corner of Section 18 was set by Charles H. Hurst, L.S. 483, per Survey No. 4890. The remaining corners of Section 18 used in this survey were remonumented by the Jackson County Surveyor. All corners, both found and set, are more particularly described in the attached survey narrative.

GENERAL NOTES:

This survey was executed using a Wild T-16ED Theodolite, a Wild T-2 Theodolite and a MAC II Electronic Distance Measuring Instrument. All bearings are referred to the true meridian based upon a solar observation made near the NW Section Corner. The East line and the East half of the South line were blazed and posted by using right angle offsets from traverse points. All other National Forest Boundary lines were surveyed as true line in the field after the position of each corner was determined by triangulation. All trees within three feet of true line were blazed with a hack mark being placed above and below each blaze. Trees on Forest Service land were quarter blazed while those on private land were given a single facing blaze. All blaze and hack marks were painted red. National Forest Boundary signs were placed on posts within one foot of true line and spaced intervisibly, but not more than 300 feet apart, along the property boundaries. See the attached survey narrative for additional information.

CERTIFICATION:

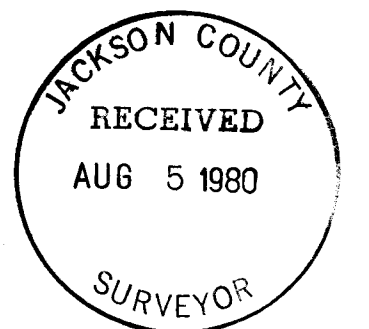
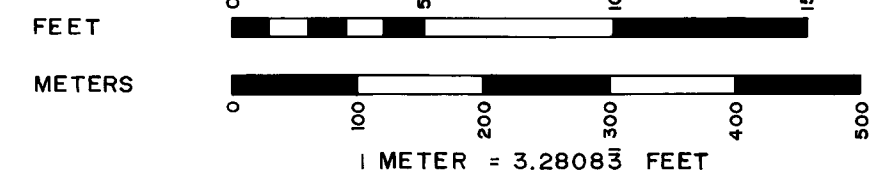
I, Richard L. Templin, Jr., Registered Professional Land Surveyor No. 1354 of the State of Oregon, hereby certify that this plat and the attached narrative are a correct representation of a survey which I executed from October, 1979 to June, 1980 for the U. S. Forest Service in accordance with Oregon State Statutes and with the provisions of Forest Service Cadastral Survey Contract No. 53-04HI-9-7634N

Richard L. Templin, Jr.
 RICHARD L. TEMPLIN, JR.
 P.L.S. No. 1354, Oregon

LEGEND:

- ⊙ Monument found as shown
- 2" Iron Pipe set with a brass cap
- National Forest Boundary Line, blazed and posted
- - - Line calculated from triangulation
- Line not run

MEAN MAG. DECL. = 20°E



APPROVED:

Richard L. Templin, Jr. August 5, 1980
 U. S. Forest Service C.O.R. Date

SHEET 2 OF 3

	RICHARD L. TEMPLIN CONSULTING ENGINEER 321 NW "A" STREET 476-7114 GRANTS PASS, OREGON
	DEPENDENT RESURVEY SECTION 18, T. 40 S., R. 1 W., W.M. LOCATED IN JACKSON COUNTY, OREGON Surveyed For: Rogue River National Forest, Medford, Oregon Scale: 1" = 500' July 1, 1980

T40S, R1W, 18