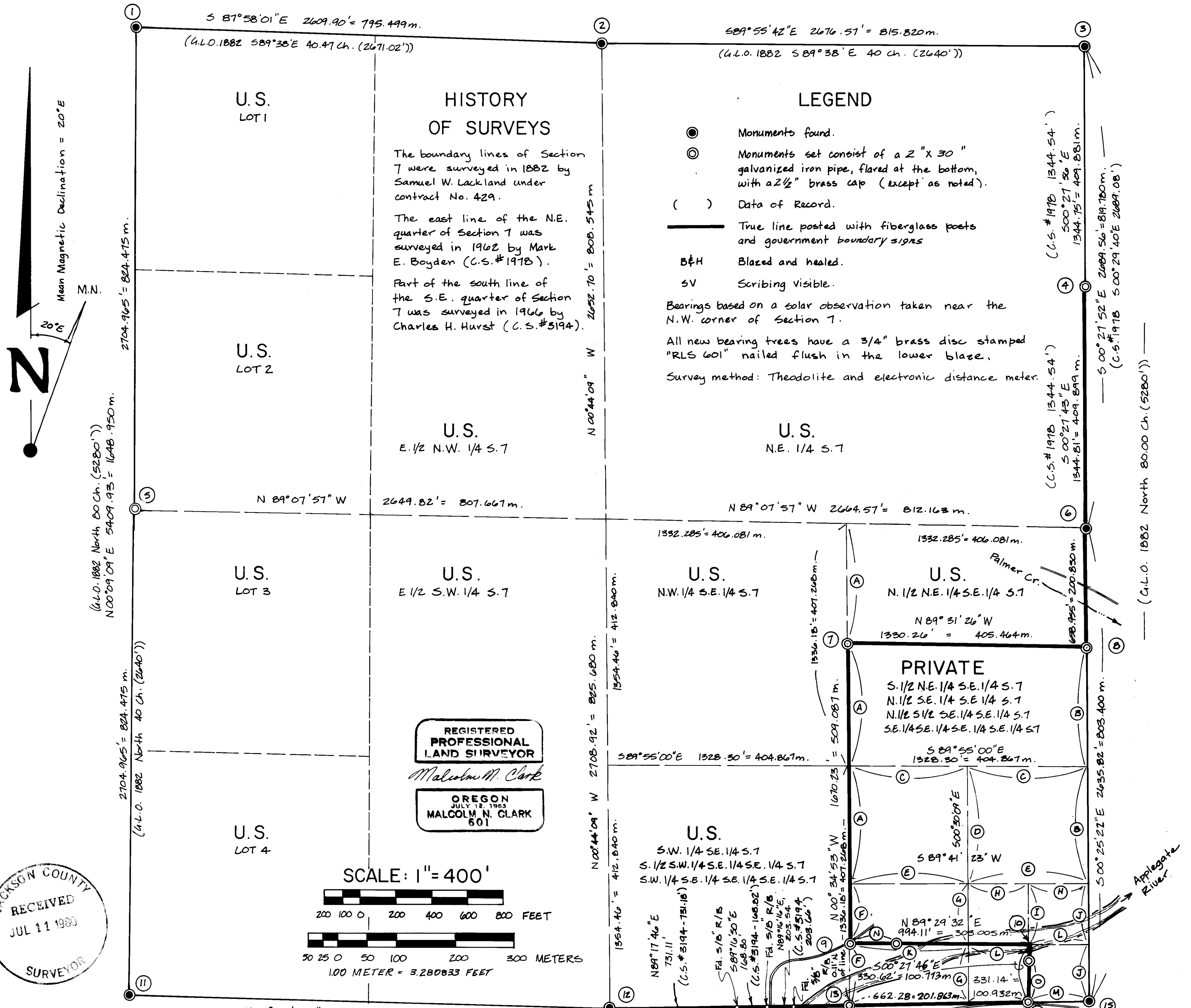


SURVEY FOR U.S. FOREST SERVICE

SECTION 7, T. 40 S., R. 3 W., W.M., JACKSON COUNTY, OREGON

DARK CANYON CADASTRAL SURVEY - CONTRACT NO. 53-04HI-7884N - MAY, 1980

CHICKERING / GREEN EMPIRE, INC. - 360 S.E."H" ST. - GRANTS PASS, OREGON



HISTORY OF SURVEYS

The boundary lines of Section 7 were surveyed in 1882 by Samuel W. Lackland under contract No. 429.

The east line of the N.E. quarter of Section 7 was surveyed in 1962 by Mark E. Boyden (C.S.#1978).

Part of the south line of the S.E. quarter of Section 7 was surveyed in 1966 by Charles H. Hurst (C.S.#5194).

LEGEND

- Monuments found.
- ⊙ Monuments set consist of a 2" x 30" galvanized iron pipe, flared at the bottom, with a 2 1/2" brass cap (except as noted).
- () Data of Record.
- True line posted with fiberglass posts and government boundary signs
- B&H Blazed and healed.
- SV Scribing Visible.

Bearings based on a solar observation taken near the N.W. corner of Section 7.

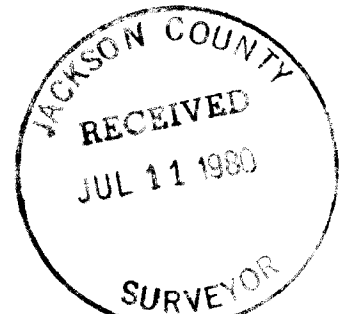
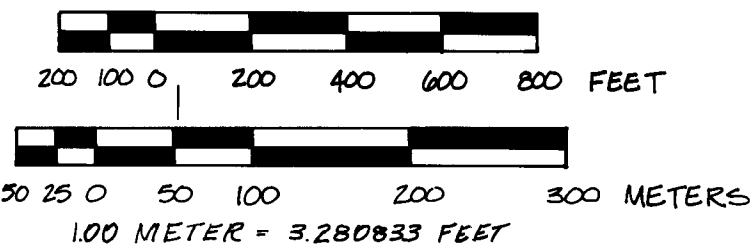
All new bearing trees have a 3/4" brass disc stamped "RLS 601" nailed flush in the lower blaze.

Survey method: Theodolite and electronic distance meter.

REGISTERED PROFESSIONAL LAND SURVEYOR

MALCOLM N. CLARK
JULY 12, 1963
OREGON
601

SCALE: 1" = 400'



- ① Fd. B.L.M. Cap stamped: Fd. B.T.'s:
TAOS R4W R3W
51 | 56
52 | 57
1966
12" Doug Fir - N 34° E - 4.8' (B&H.)
10" Doug Fir - N 44° E - 23.2' (S.V.)
8" Doug Fir - S 86° E - 13.2' (B&H.)
30" Doug Fir - S 12° W - 31.3' (B&H.)
6" Oak - N 74° W - 10.0' (S.V.)
- ② Fd. Brass Cap stamped:
Jackson County Fd. B.T.'s:
TAOS R3W 10" Ponderosa Pine - N 07° E - 17.5' (S.V.)
1/4 S 40" Madrone - N 08° E - 28.6' (S.V.)
1977 14" Madrone - S 20° E - 24.4' (S.V.)
14" Doug Fir - S 70° W - 13.3' (S.V.)
- ③ Fd. B.L.M. Cap stamped: Fd. B.T.'s:
TAOS R3W 26" Ponderosa Pine - S 48° E - 68.5' (B&H.)
56 | 55 12" Ponderosa Pine - S 55° W - 41.4' (B&H.)
57 | 58 12" Doug Fir - N 26° W - 19.3' (B&H.)
1964 10" Doug Fir - N 70° E - 29.5' (B&H.)
- ④ Fd. 1" Iron Pipe. Replaced pipe with Brass Cap stamped: Fd. B.T.'s:
TAOS R3W N 1/10
57 | 58 7" D.F. - N 71° E - 6.4 ft. (B&H.)
1980 12" D.F. Windfall - N 27 1/4° W - 22.0'
RLS 601 New B.T.'s: 8" D.F. - S 36° W - 13.6'
scribed "TAOSR3W N 1/10 S 7 BT"
- ⑤ Set Brass Cap by proportion stamped:
TAOS R3W New B.T.'s:
1/4
52 | 57 10" D.F. - N 18° 00' W - 70.3'
scribed "TAOSRAW 1/4 52 BT"
1980 6" D.F. - S 45° 15' E - 57.6'
RLS 601 scribed "TAOSR3W 1/4 57 BT"

- ⑥ Fd. Brass Cap stamped: Fd. B.T.'s:
TAOSR3W 6" Doug Fir - N 58° E - 24.7' (S.V.)
1/4 7 | B COR 16" Oak - N 43° E - 17.6' (S.V.)
C.S. 1962 24" Ponderosa Pine - S 20° E - 24.6' (B&H.)
14" Oak - S 22° W - 19.8' (rotten blaze)
24" Oak - N 67° W - 15.8' (S.V.)
- ⑦ Set Brass Cap by proportion stamped:
TAOS R3W New B.T.'s:
57
C-N-SE 22" D.F. - S 39° 50' W - 93.5'
1/64
1980 scribed: "TAOSR3WC-N-SE 1/64 S 7 BT"
20" Ponderosa Pine - S 73° 20' E - 38.0'
RLS 601 scribed: "TAOSR3WC-N-SE 1/64 S 7 BT"
- ⑧ Set Brass Cap by proportion stamped:
TAOS R3W New B.T.'s:
N-S
1/64
57 | 58 20" Doug Fir - N 46° W - 42.4'
scribed: "TAOSR3WN-S 1/64 S 7 BT"
1980 16" Doug Fir - N 29° E - 14.7'
RLS 601 scribed: "TAOSR3WN-S 1/64 S 8 BT"
- ⑨ Set Brass Cap by proportion stamped:
TAOS R3W New B.T.'s:
57
C-S-S-SE 12" Doug Fir - S 17° 35' W - 68.5'
1/256
1980 8" Ponderosa Pine - N 52° 30' W - 27.8'
Both scribed:
RLS 601 "TAOSR3WCSSSE 1/256 S 7 BT"
- ⑩ Corner falls in Applegate River. Set Witness Corners as follows: A
TAOSR3W Brass Cap, stamped as shown,
57 bears 500° 27' 46" E, 92.75'
↑ from the position of the corner.
SE-SE-SE Witness Corner B.T.'s:
1/256 8" Incense Cedar - N 60 1/2° W - 48.6'
1980 10" Ponderosa Pine - S 28° W - 19.2'
RLS 601

- A Brass Cap, stamped as shown, (U.L.O. 1882 N 89° 51' E 40 Ch. (2640')) bears S 89° 29' 32" W, 740.63' from the position of the corner.
- TAOS R3W Witness Corner B.T.'s:
57 18" Oak - N 53° E - 108.1'
SE-SE-SE 12" Oak - N 40 3/4° W - 26.6'
1/256 All Witness Corner B.T.'s
1980 scribed "TAOSR3WUC-SE-SE 1/256
RLS 601 S 7 BT"
- ⑪ Fd. Brass Cap stamped:
Jackson Co. Fd. B.T.'s:
TAOS 8" Oak - N 71° W - 58.8' (S.V.)
52 | 57 18" Doug Fir - N 16° E - 8.4' (B&H.)
53 | 58 14" Doug Fir - S 74° E - 67.5' (S.V.)
RAW R3W 10" D.F. Snag - S 08° W - 19.8'
1977 12" Doug Fir - S 42° W - 30.9' (S.V.)
- ⑫ Fd. B.L.M. Brass Cap stamped:
TAOS R3W Fd. B.T.'s:
57
1/4 518 12" Doug Fir - N 41° W - 21.6' (B&H.)
1964 12" Doug Fir - S 13° E - 15.6' (B&H.)
- ⑬ Set Brass Cap by proportion stamped:
TAOS R3W New B.T.'s:
E 1/10 57 10" Ponderosa Pine - S 32° 45' E - 77.6'
1980 scribed: "TAOSR3WE 1/10 S 18 BT"
RLS 601 22" Ponderosa Pine - N 45° 15' E - 68.3'
scribed: "TAOSR3WE 1/10 S 7 BT"

- ⑭ Set Brass Cap tablet, in asphalt road, by proportion, stamped:
TAOS R3W Set 5/8" R/B reference pins as follows: 543° 09' 40" W - 37.52'
57 57 58 N 45° 45' 22" W - 47.90'
518 1980 N 40° 40' 15" E - 37.13'
RLS 601 S 46° 16' 40" E - 46.21'
- ⑮ Fd. B.L.M. Brass Cap stamped:
TAOS R3W Fd. B.T.'s:
57 58 30" Doug Fir - S 89° 10' E - 57.6'
518 | 517 28" Doug Fir - N 81° 00' W - 200.4'
1964 42" Doug Fir - S 39° 50' W - 80.6'

- ⓐ 668.09' = 203.634 m.
- ⓑ 658.955' = 200.850 m.
- ⓒ 664.15' = 202.433 m.
- ⓓ 663.52' = 202.241 m.
- ⓔ 663.20' = 202.144 m.
- ⓕ 334.045' = 101.817 m.
- ⓖ 331.76' = 101.121 m.
- ⓗ 331.60' = 101.012 m.
- ⓓ 330.62' = 100.713 m.
- ⓓ 329.478' = 101.425 m.
- ⓓ 662.74' = 202.004 m.
- ⓓ 331.37' = 101.002 m.
- ⓓ 331.14' = 100.932 m.
- ⓓ 253.47' = 77.258 m.
- ⓓ 237.87' = 72.503 m.

Accepted and approved for the U.S. Forest Service.

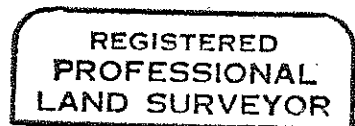
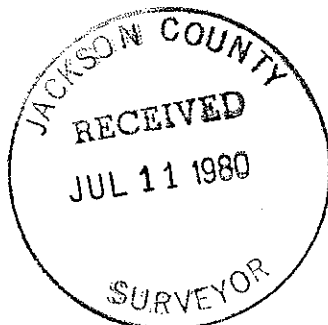
Nautila 7/1/80 Date
C.O.R.

I, Malcolm N. Clark, a registered land surveyor in the State of Oregon, hereby certify that this plat and the notes hereon are a correct representation of a survey I performed during May, 1980, for the U.S. Forest Service, in accordance with the statutes of the State of Oregon and with the Articles of my contract.

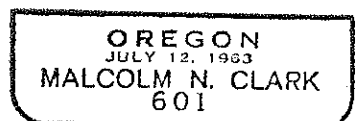
MALCOLM N. CLARK
Registered Land Surveyor
Oregon License 601

Survey Number 8439

13. T40S R3W Set by proportion, a 2 1/2" X 30" G.I.P., flared at the bottom, with a 2 1/2" brass cap, marked as shown.
 S7
 E 1/16 S18 Marked BT's as follows:
 1980 10" P. Pine, bears S32°45'E, 77.6 feet,
 RLS 601 scribed, T40SR3WE1/16S18BT.
 22" P. Pine, bears N45°15'E, 68.3 feet,
 scribed T40SR3WE1/16S7BT.
14. T40S R3W Corner falls in paved road to Applegate Dam.
 S7 Set by proportion, a 3" brass disc flush with the asphalt surface, marked as shown.
 E-E-E, 1/256 Set 5/8" X 30" rebar for references as follows:
 S18 1) N45°45'22"W, 47.90 feet: 2) N40°40'15"E 37.13 feet:
 1980 3) S46°16'40"E, 46.21 feet: 4) S43°09'40"W, 37.52 feet:
 RLS 601 The rebars are set in the right-of-way fence lines.
15. T40S R3W Found BLM brass cap set in concrete, flush with lawn, marked as shown. Found BT's as follows:
 S7/S8 30" D. Fir, bears S89°10'E, 37.6 feet, blazed and healed.
 S18/S17 28" D. Fir, bears N81°00'W, 200.4 feet, blazed and healed.
 1964 42" D. Fir, bears S39°50'W, 88.6 feet, blazed and healed.
 Corner is in a front yard, 4 feet North of board fence, approximately 20 feet West of a sidewalk to house.



Malcolm N. Clark



Survey Number 8439

10. T40S R3W
S7
SE-SE-SE
1/256
1980
RLS 601
- Corner falls in the Applegate River. Set Witness corners as follows:
A 2 1/2" X 30" G.I.P., flared at the bottom, with a brass cap marked as shown at right, that bears S00°27'46"E, 92.75 feet from the true corner position.
Marked BT's as follows:
8" I. Cedar, bears N60 1/2°W, 48.6 feet, scribed, T40SR3WWCSESESE1/256S7BT.
10" P. Pine, bears S28°W, 19.2 feet, scribed, T40SR3WWCSESESE1/256S7BT.
Land Survey Monument and Boundary signs 3.4 feet North of corner.
- T40S R3W
WC
↑
S7
SE-SE-SE
1/256
1980
RLS 601
- A 2 1/2" X 30" G.I.P., flared at the bottom with a 2 1/2" brass cap marked as shown, that bears S89°29'32"W, 740.63 feet from the true corner position.
Marked new BT's as follows:
18" Oak, bears N53°E, 108.1 feet, scribed T40SR3WWCSRSESE1/256S7BT.
12" Oak, bears N40°45'W, 26.6 feet, scribed T40SR3WWCSESESE1/256S7BT.
Land Survey Monument and Boundary signs 5.3 feet West of corner.
- T40S R3W
WC
→
S7
SE-SE-SE
1/256
1980
RLS 601
11. Jackson County
T40S
S12 | S7
S13 | S18
R4W R3W
1977
- Found 2 1/2" brass cap marked as shown. Found BT's as follows:
8" Oak, bears N71°W, 58.8 feet, scribing visible.
18" D. Fir, bears N16°E, 8.4 feet, blazed and healed.
14" D. Fir, bears S74°E, 67.5 feet, scribing visible.
10" D. Fir snag, bears S08°W, 19.8 feet, chopped out.
12" D. Fir, bears S42°W, 30.9 feet, scribing visible.
A Land Survey Monument sign is 4 feet South of corner.
12. T40S R3W
S7
1/4 ———
S18
1964
- Found BLM brass cap marked as shown. Found BT's as follows:
12" D. Fir, bears N41°W, 21.6 feet, blazed and healed.
12" D. Fir, bears S13°E, 15.6 feet, blazed and healed.
A Land Survey Monument sign is 2 feet West of corner.

Survey Number 8439

5. T40S R4W R3W
1/4
S12|S7
1980
RLS 601
Set by proportion, a 2 1/2"X 30" G.I.P., flared at the bottom, with a 2 1/2" brass cap marked as shown. Marked BT's as follows:
6" D. Fir, bears S45°15'E, 57.6 feet, scribed, T40SR3W1/4S7BT.
10" D. Fir, bears N18°00'W, 70.3 feet, scribed, T40SR3W1/4S12BT.
A Land Survey Monument sign is 4 feet North of corner.
6. T40S R3W
1/4 7|8
CS
1962
Found 2 1/2" brass cap in a mound of stones, marked as shown, on a 1 1/4" G.I.P.. Found BT's as follows:
6" D. Fir, bears N38°E, 24.7 feet, scribing visible.
16" Oak, bears N43°E, 17.6 feet, blazed and healed.
14" Oak, bears S22°W, 19.8 feet, blaze rotted.
24" Oak, bears N67°W, 15.8 feet.
24" P. Pine, bears S20°E, 24.6 feet, blazed and healed.
A Land Survey Monument sign is 3.1 feet South of corner.
7. T40S R3W
S7
C-N-SE
•
1/64
1980
RLS 601
Set by proportion, a 2 1/2"X30" G.I.P., flared at the bottom, with a 2 1/2" brass cap marked as shown. Marked BT's as follows:
20" P. Pine, bears S73°20'E, 38.0 feet, scribed, T40SR3WCNSE1/64S7BT.
22" D. Fir, bears S39°50'W, 93.5 feet, scribed, T40SR3WCNSE1/64S7BT.
Land Survey Monument and Boundary signs 3.4 feet South of corner.
8. T40S R3W
N-S
1/64
S7|S8
1980
RLS 601
Set by proportion, a 2 1/2"X 30" G.I.P., flared at the bottom, with a 2 1/2" brass cap marked as shown. Marked BT's as follows:
20" D. Fir, bears N46°W, 42.4 feet, scribed, T40SR3WNS1/64S7BT.
16" D. Fir, bears N29°E, 14.7 feet, scribed, T40SR3WNS1/64S8BT.
Land Survey Monument and Boundary signs 4.3 feet North of corner.
9. T40S R3W
S7
C-S-S-SE
•
1/256
1980
RLS 601
Set by proportion, a 2 1/2"X 25" G.I.P., flared at the bottom with a 2 1/2" brass cap marked as shown. Marked BT's as follows:
12" D. Fir, bears S17°35'W, 68.5 feet, scribed, T40SR3WCSSSE1/256S7BT.
8" P. Pine, bears N52°30'W, 27.8 feet, scribed, T40SR3WCSSSE1/256S7BT.
A 4"X 4" treated wood post with Land Survey Monument and Boundary signs is 15 feet North of corner. Corner falls in West ditch line of gravel road and is 6" below the surface.

Survey Number 8439

Note: All BT's have a 6" red paint band and an Attention Sign.
New BT's have brass washer stamped RLS 601 on lower blaze.

Corners set
or Found:

1. Found BLM brass cap in a mound of stones, marked as shown. Found BT's as follows:

T40S	
R4W	R3W
S1	S6
S12	S7
1966	

12" D. Fir, bears N34°E, 4.8 feet, blazed and healed.
10" D. Fir, bears N44°E, 23.2 feet, blazed and healed.
10" D. Fir, bears S86°E, 13.2 feet, blazed and healed.
8" D. Fir, bears S12°W, 31.3 feet, blazed and healed.
30" D. Fir, bears S54°W, 29.8 feet, blazed and healed.
6" Oak, bears N74°W, 10.0 feet, scribing visible.
12" D. Fir, bears N33°W, 16.7 feet, scribing visible.
10" D. Fir, bears S52°E, 41.4 feet, blazed and healed.
A Land Survey Monument sign is 3.5 feet West of corner.
2. Found Jackson County brass cap, in a mound of stones marked as shown. Found BT's as follows:

T40S	R3W
1/4	S6
	S7
1977	

10" P. Pine, bears N07°E, 17.5 feet, scribing visible.
40" Madrone, bears N08°E, 28.6 feet, scribing visible.
14" D. Fir, bears S78°W, 13.3 feet, scribing visible.
14" Madrone, bears S20°E, 24.4 feet, scribing visible.
A Land Survey Monument sign is 1 foot East of corner.
3. Found a BLM brass cap, in a mound of stones, marked as shown. Found BT's as follows:

T40S	R3W
S6	S5
S7	S8
1964	

26" P. Pine, bears S48°E, 68.5 feet, blazed and healed.
12" P. Pine, bears S55°W, 41.4 feet, blazed and healed.
12" D. Fir, bears N26°W, 19.3 feet, blazed and healed.
10" D. Fir, bears N70°E, 29.5 feet, blazed and healed.
A Land Survey Monument sign is 1 foot South of corner.
4. Found a 1" iron pipe, which I replaced with a 2 1/2" X 30" G.I.P., flared at the bottom with a 2 1/2" brass cap marked as shown. Found BT's as follows:

T40S	R3W
N 1/16	
S7	S8
1980	
RLS 601	

7" D. Fir, bears 71°E, 6.4 feet, blazed and healed.
12" D. Fir windfall, bears N27 1/4°W, 22.0 feet, blazed and healed.
Set New BT's: 8" D. Fir, bears S36°W, 13.6 feet, scribed, T40SR3WN1/16S7BT.
12" D. Fir, bears N69°E, 16.9 feet, scribed, T40SR3WN1/16S8BT.
Land Survey Monument and Boundary sign 3 feet South of corner.

Survey Number 8439

Survey Narrative To Comply With ORS 209.250

Location: Section 7, T. 40S., R. 3W., W.M.

Survey for: U.S. Forest Service, Rogue River National Forest
Medford, Oregon. Dark Canyon Cadastral
Contract No. 53-04H1-7884N

Survey by: CHICKERING/GREEN EMPIRE, INC.
360 S.E. "H" Street
Grants Pass, Oregon 97526
(Malcolm N. Clark, RLS 601)

Date: May 1980

Equipment: Wild T-16, K&E AutoRanger and Model 78 Geodimeter

Purpose: To survey certain boundaries of U.S. Forest Service lands in Section 7, to mark, and post the boundary lines of certain U.S. Forest Service lands, to monument certain interior property corners of the U.S. Forest Service, and to reestablish the West 1/4 corner of Section 7.

Procedure: A Solar observation was taken near the Northwest Section Corner of Section 7 and a second solar was taken at the South 1/4 corner. Bearings are based on the solar near the Northwest Section Corner. E.D.M. traverses were run between controlling corners. A search was made for original evidence of the West 1/4 corner and found none, the corner was set by proportionate measurement, using Samuel Lackland's plat of 1882 as the basis of proportionate measurement. All property lines shown on the record survey map were marked by 6 foot fiberglass post with Forest Service boundary signs. The property lines were blazed and painted with red paint. Corner monuments are 2 1/2 inch brass caps on 2 inch (ID) by 30 inch flared galvanized iron pipe, set approximately 24 inches in the ground. The E-E-E 1/256 between Section 7 and 18 is a 3 inch brass disc set flush with the asphalt and the C-S-S-SE 1/256 corner is set in the ditch of a gravel road, 6 inches below the surface.