

FAIRWAY ESTATES SUBDIVISION, UNIT NO. 1

LOCATED IN LOTS 1, 3 AND 4 OF CREST BROOK ORCHARD TRACTS (A RECORDED SUBDIVISION), AND IN THE N.E. 1/4 OF SECTION 28, T.37S., R.1W., W.M., MEDFORD, OREGON

POST MONUMENTATION MAP

6/10/1980

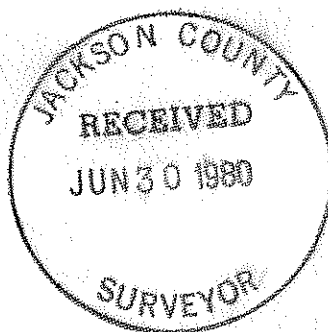
Filed for record this 27 day of June, 1980 at 9:22 o'clock A.M. and recorded in the official records of Jackson County, Oregon.

Betty Key
DEPUTY

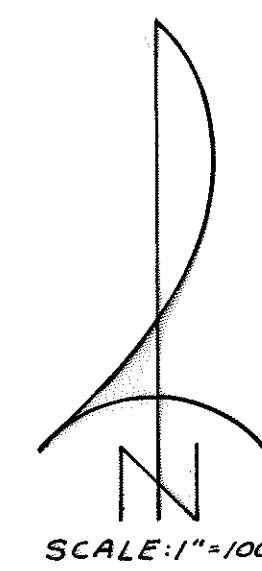
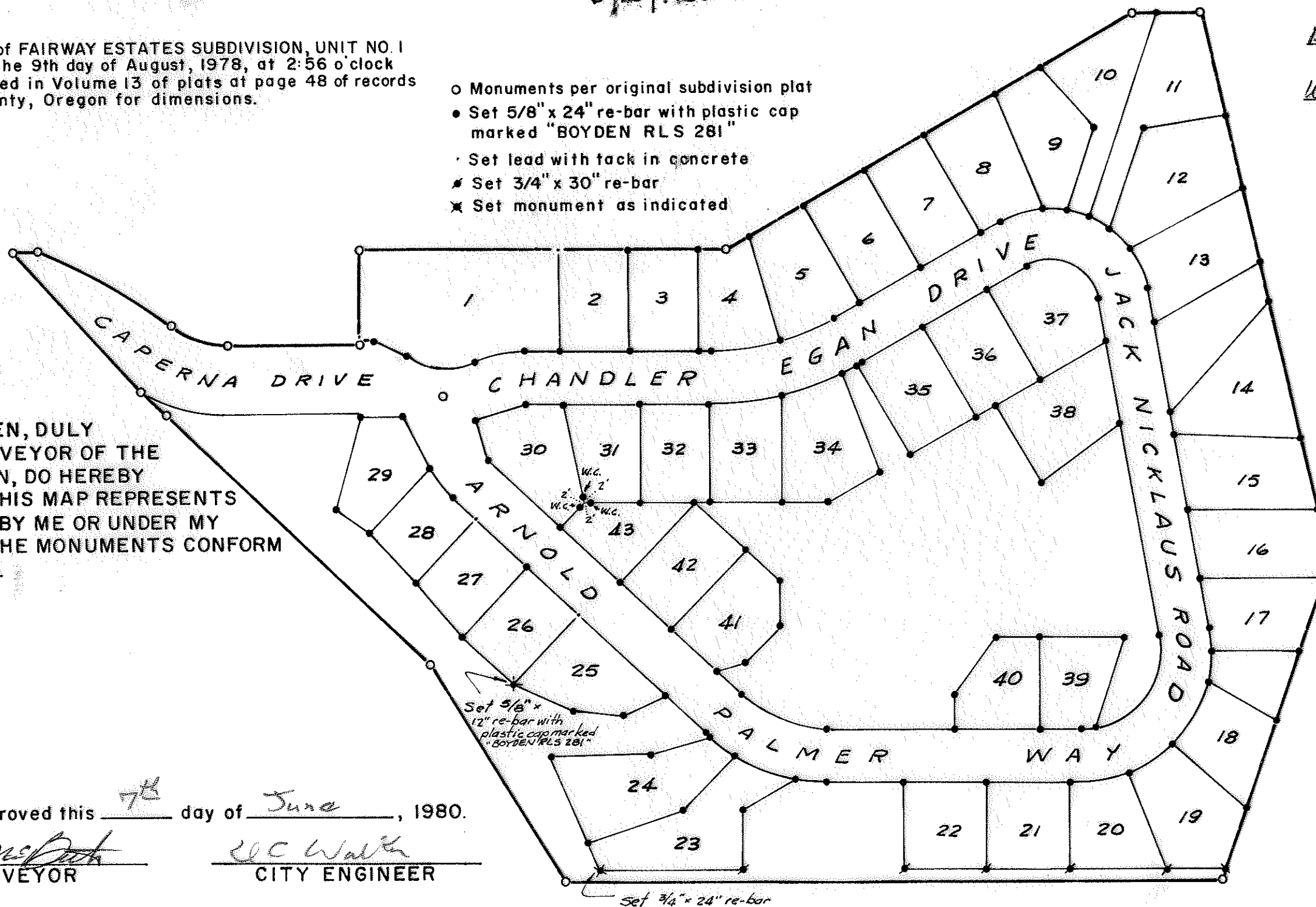
Waldene Terry
COUNTY CLERK

NOTE: See plat of FAIRWAY ESTATES SUBDIVISION, UNIT NO. 1 filed for record the 9th day of August, 1978, at 2:56 o'clock P.M. and recorded in Volume 13 of plats at page 48 of records of Jackson County, Oregon for dimensions.

- o Monuments per original subdivision plat
- Set 5/8" x 24" re-bar with plastic cap marked "BOYDEN RLS 281"
- Set lead with tack in concrete
- * Set 3/4" x 30" re-bar
- * Set monument as indicated



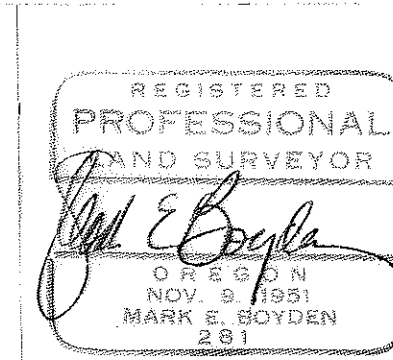
I, MARK E. BOYDEN, DULY REGISTERED SURVEYOR OF THE STATE OF OREGON, DO HEREBY CERTIFY THAT THIS MAP REPRESENTS A SURVEY MADE BY ME OR UNDER MY DIRECTION AND THE MONUMENTS CONFORM TO O.R.S. 92.060.



Examined and approved this 7th day of June, 1980.

David McBeth
CITY SURVEYOR

W.C. Walker
CITY ENGINEER



8413

8413