

S9 T35S R2E W.M.

MAP OF SURVEY
FOR
MEDFORD RESOURCES CORPORATION
P.O. BOX 550
MEDFORD, OREGON
97501

DATE : JUNE 17, 1980

SCALE : 1" = 500'



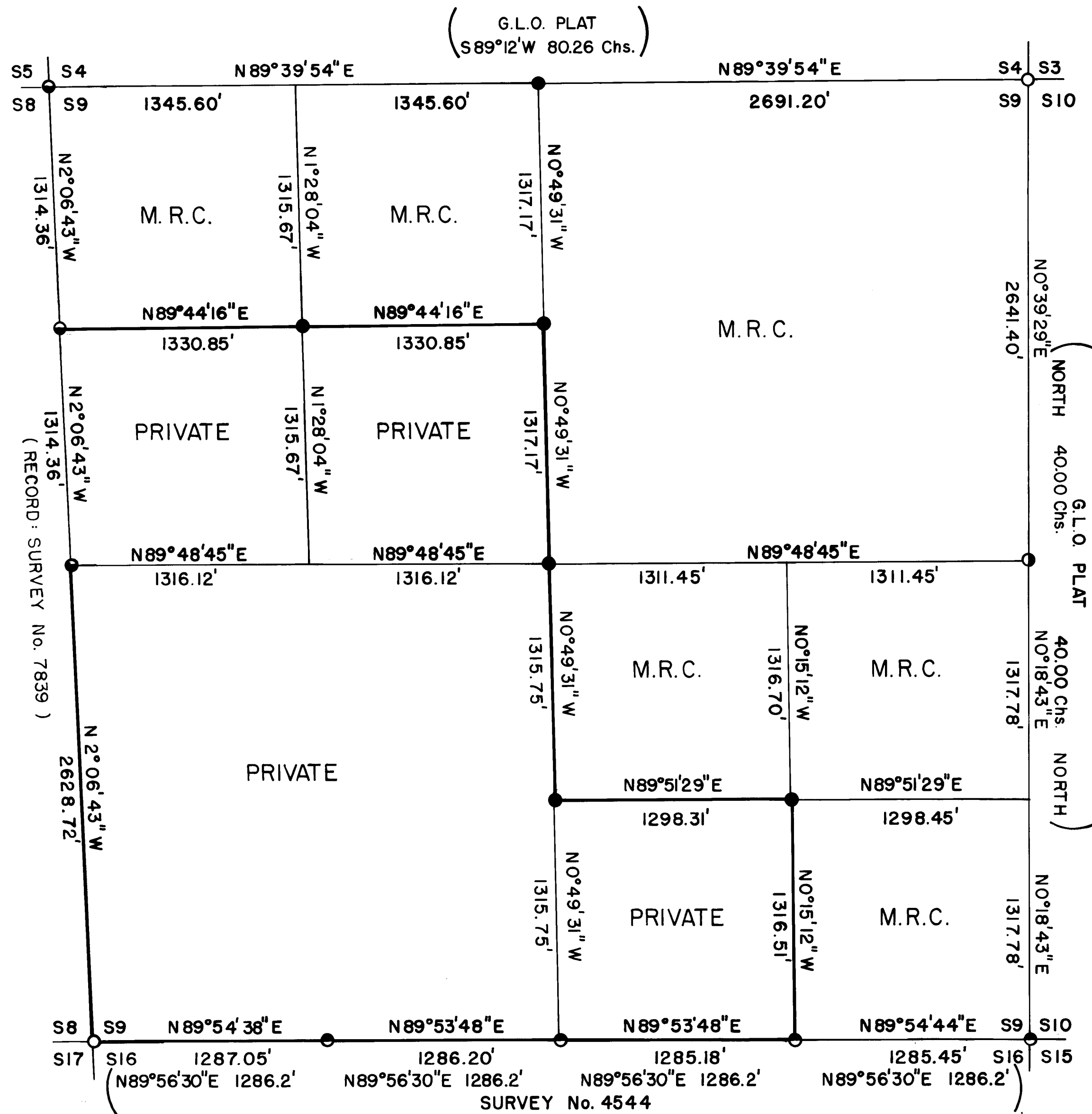
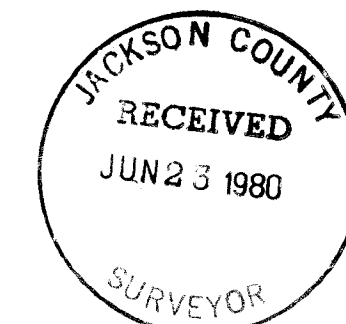
BASIS OF BEARING : SURVEY No. 7839

- FOUND STANDARD B.L.M. MONUMENT
- FOUND COUNTY MONUMENT
- FOUND MEDCO MONUMENT SET SURVEY No.7839
- FOUND MEDCO MONUMENT SET SURVEY No.4544
- SET 5/8" X 30" REBAR WITH 1 1/2" ALUM. CAP

REGISTERED
PROFESSIONAL
LAND SURVEYOR

Arthur R. Rambo

OREGON
MAY 20 1974
ARTHUR R. RAMBO
No. 1086



From which I take trees

A 12 inch dia. Oak bears N74⁰25'W 68.2 feet marked CS 1/16S9 upper face
BT lower face

A 7 inch dia. Pine bears S15⁰52'W 93.9 feet marked CS 1/16S9 upper face
BT lower face

Center one quarter corner S9. At the corner location I set a 5/8" x 30"
rebar with a 1½ in. aluminum cap marked:

T35S R2E

S9

C¼ +

LS 1086

From which I take trees

A 7 inch dia. Fir S47⁰46'W 25.1 feet marked C¼S9 upper face
BT lower face

A 9 inch dia. Fir bears S45⁰28'E 17.0 feet marked C¼S9 upper face
BT lower face

Center North one sixteenth corner S9. At the corner location 10 inches under
the surface of Medford Water Commission road I set a 5/8" x 30" rebar with a
1½ inch aluminum cap marked:

T35S R2E

S9

CN1/16+

LS 1086

From which I take trees

An 11 inch dia. Fir bears N26⁰20'W 55.9 feet marked CN 1/16S9 upper face
BT lower face

A 12½ inch dia. Fir bears N42⁰12'E 31.8 feet marked CN 1/16S9 upper face
BT lower face

North West one sixteenth corner S9. At the corner location I set a 5/8" x 30"
rebar with a 1½ in. aluminum cap marked:

T35S R2E

S9

NW1/16+

LS 1086

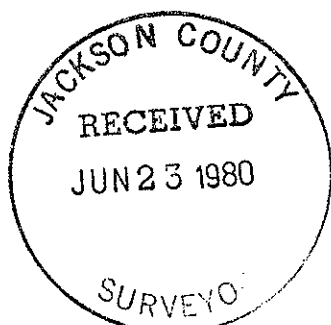
From which I take trees

An 8 inch dia. Oak bears N28⁰48'W 58.7 feet marked NW 1/16S9 upper face
BT lower face

A 7 inch dia. Oak bears N18⁰00'E 49.8 feet marked NW 1/16S9 upper face
BT lower face



Arthur R. Rambo



8407

SECTION 9, TOWNSHIP 35 SOUTH, RANGE 2
EAST WILLAMETTE MERIDIAN

Survey Narrative to Comply with O.R.S. 209.250

Survey For: Medford Resources Corporation
P. O. Box 550
Medford, Oregon 97501

Survey By: Arthur R. Rambo LS 1086
331 Bluff Street
Butte Falls, Oregon 97522

Basis of Bearing: Survey # 7839

Date: June 17, 1980

Procedure:

A search of the records revealed the following surveys in this area:

Nathaniel Ford surveyed T35S R2E under contract No. 58 dated April 18, 1855.
The South line of Section 9 was resurveyed in 1971 (survey #4544).
The West line of Section 9 was resurveyed in 1979 (survey #7839).

A search in the field revealed the following evidence:

Beginning from survey No. 7839 at the Northwest corner of Section 9, I traversed around the section, with a Theodolite and electronic measuring device, to the Southwest corner closing to survey No. 7839. All of the controlling corners except the North 1/4 corner have been re-established by the Cadastral Surveyor, County Surveyor, or by previous surveys. We spent 4-man days searching for the North 1/4 corner, also personnel from the county surveyor's office spent 1 day searching for this corner. Having found no evidence of this corner, it was set by proportionate measurement.

Corners established this survey:

Measurement to bearing trees are to the center of trees unless stated otherwise.

One quarter corner common to S4 and 9 T35S R2E. At the corner location I set a 5/8" x 30" rebar with a 1½ inch aluminum cap marked:

T35S R2E
S4
¼
S9
LS 1086

From which I take trees

A 7 inch dia. Cedar bears S15⁰⁰'E 33.8 feet marked ¼S9 upper face
BT lower face
A 9 inch dia. Pine bears N58⁰⁰'W 33.8 feet marked ¼S4 upper face
BT lower face

Southeast one sixteenth corner S9. At the corner location I set a 5/8" x 30" rebar with a 1½ in. aluminum cap marked:

T35S R2E
S9
SE1/16+
LS 1086

From which I take trees

A 10 inch dia. Fir bears N57⁰⁰'E 29.2 feet marked SE 1/16S9 upper face
BT lower face
A 9½ in. dia. Fir bears N44⁰⁰'W 20.0 feet marked SE 1/16S9 upper face
BT lower face

Center South one sixteenth corner S9. At the corner location, I set a 5/8" x 30" rebar with a 1½ in. aluminum cap marked:

T35S R2E
S9
CS1/16+
LS 1086