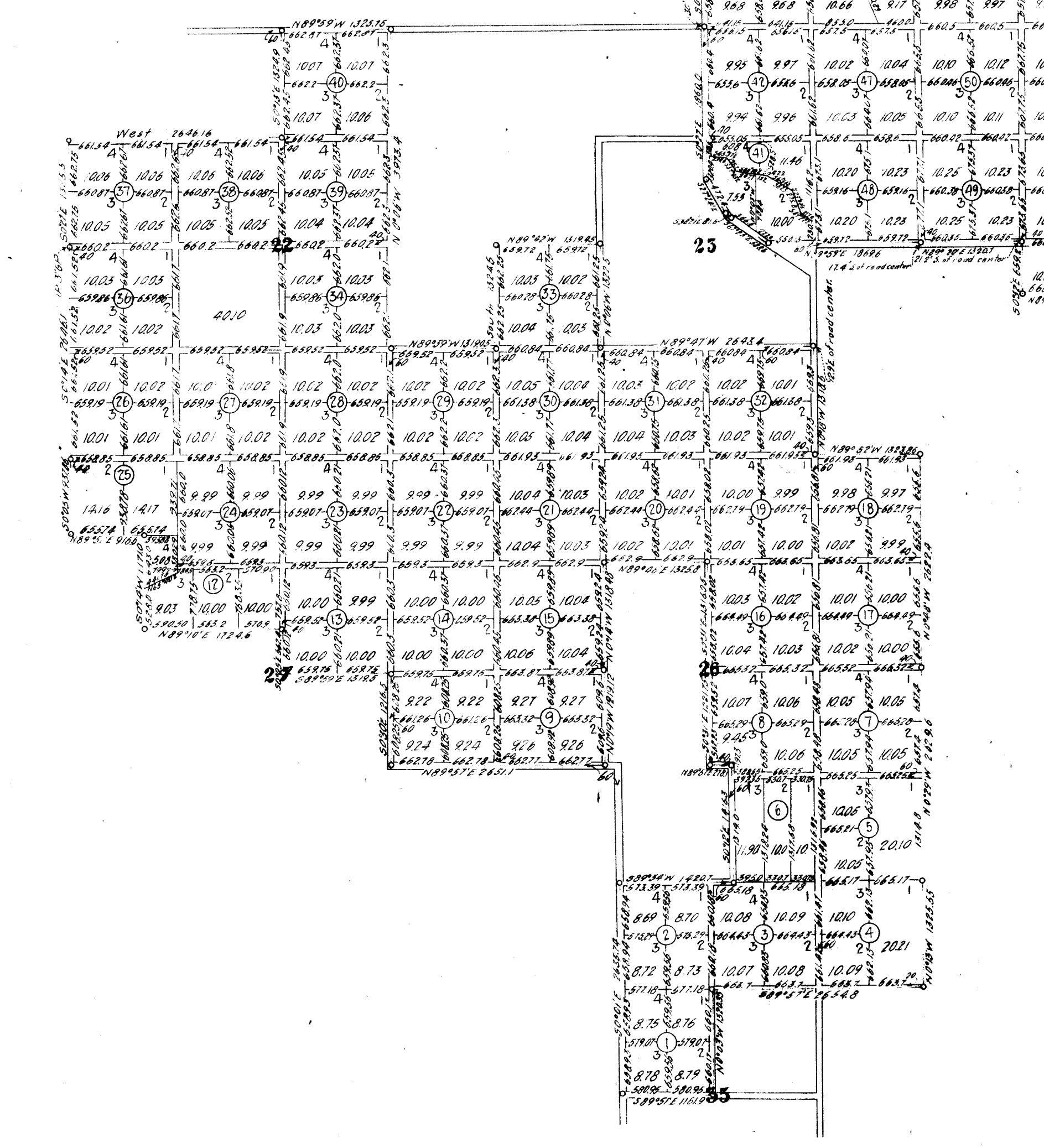


11.70) TRAVEL ROE - Beginning at the corner common to Block 54 and 62 and running thence S89°30'E 1770.76 ft on a curve of 923.74 ft radius, central angle 119.27', 18.85'; thence N12°20'17" S 999.94 ft, thence N71° on a curve of 278.16 ft radius, central angle 29°41', 117.14'; thence N52°04'W 220.11 ft; thence right on a curve of 633.37 ft radius, central angle 12°45' 21.94"; thence N39°30'W 440.14 ft; thence left on a curve of 512.65 ft radius, central angle 2°8' 46.51"; thence N43°09'W 427.71 ft; thence right on a curve of 1002.91 ft radius, central angle 1°13' 16.42"; thence N43°04'E 549.74 ft; thence from a parallel to the North boundary of Block 54, thence right on a curve of 202.53 ft radius, central angle 6°51' 56.74"; thence left on a curve of 167.14 ft radius, central angle 3°35' 12.71"; thence N47°55'E 355.74 ft; thence right on a curve of 242.74 ft radius, central angle 4°58' 18.68"; thence S 20°21' S 520.71 ft; thence left on a curve of 333.69 ft radius, central angle 13°27' 33.14 ft; thence left on a curve of 233.7 ft radius, central angle 27°57' 16.71"; thence right on a curve of 174.2 ft radius, central angle 12°21' 11.27"; thence N39°30'W 182.71 ft; thence right on a curve of 483.5 ft radius, central angle 8°40' 2.68"; thence N40°00'W 200.71 ft; thence N40°00'E 608.71 ft; thence from a parallel to the North boundary of Block 65, thence N71°50'E 457.25 ft; thence N45°17'E 491.14 ft; thence right on a curve of 248.8 ft radius, central angle 4°52' 18.88"; thence N30°52' 603.71 ft; thence right on a curve of 424.74 ft radius, central angle 3°27' 48.14"; thence left on a curve of 670.25 ft radius, central angle 1°43' 21.31"; thence N47°55'E 454.41 ft; thence right on a curve of 448.58 ft radius, central angle 3°27' 10.20"; thence N37°50'E 454.41 ft; thence right on a curve of 135.11 ft radius, central angle 1°51' 15.11"; thence from a parallel to the North boundary of Block 9, thence left on a curve of 283.5 ft radius, central angle 4°37' 12.57"; thence S72°40'E 122.71 ft; thence right on a curve of 212.4 ft radius, central angle 2°42' 13.21"; thence left on a curve of 197.2 ft radius, central angle 4°27' 9.19 ft; thence N44°52'E 378.71 ft; thence right on a curve of 226.35 ft radius, central angle 2°50' 18.64 ft; thence N49°25'E 363.31 ft; thence right on a curve of 241.68 ft radius, central angle 2°56' 19.71 ft; thence left on a curve of 181.1 ft radius, central angle 1°48' 11.43 ft; thence N46°50'E 349.2 ft; thence right on a curve of 133.7 ft radius, central angle 10°19' 26.31 ft; thence N42°02'E 276.71 ft; thence N46°50'E 349.2 ft; thence right on a curve of 181.1 ft radius, central angle 1°48' 11.43 ft; thence left on a curve of 342.3 ft radius, central angle 6°52' 37.14 ft; thence right on a curve of 148.89 ft radius, central angle 1°52' 46.21 ft; thence N47°00'E 136.7 ft; thence right on a curve of 68.5 ft radius, central angle 1°52' 46.21 ft; thence N42°00'W 516.71 ft; thence right on a curve of 119.2 ft radius, central angle 4°56' 17.61 ft; thence left on a curve of 112.9 ft radius, central angle 5°22' 10.37 ft; thence N35° 53'E 105.8 ft; thence right on a curve of 122.8 ft radius, central angle 5°10' 11.8 ft; to a point 15 ft South of the South boundary of Block 10, thence parallel to and 5 ft from the South boundary of Block 10, N69°42' 33.4 ft; thence N47°00'E 216.71 ft; thence S49°02' 216.71 ft; thence East 458 ft to a point 15 ft S 30°12'E of the South east corner of Block 10.



DESCRIPTION: This subdivision comprises the following described premises owned by ROGUELANDS INCORPORATED an Oregon corporation with its principal place of business at Medford, Oregon, said premises being particularly described as follows, to wit: - Beginning at the SE corner between Sections 23 and 25 Township 36S, Range 2 W, W.M. and running thence S0°42'E on the section line 766.61 ft; thence S0°42'W 852.08 ft; thence N89°01'E 966.6 ft; thence S0°42'W 1015.5 ft; thence N89°01'E 1246.4 to the NE corner D.L.C. 52 T.36S, R.2W, W.M.; thence S0°05'E 562.4 ft; thence S89°59'E 512.55 ft; thence S0°05'E 1216.34 to the North line D.L.C. 52 T.36S, R.2W, W.M.; thence N08°12'E 263.11 ft; thence N01°14'W 138.48 ft; thence N8°41'E 325.5 ft; thence S0°11' 253.2 ft; thence N87°31'E 278.1 ft; thence S0°12'E 148.3 ft; thence S89°59'W 1207.1 ft; thence S0°11'E 263.2 ft; thence S89°59'W 1167.9 ft; thence N8°31'W 1302.35 ft; thence S89°59'E 204.3 ft; thence N08°15'W 325.5 ft; thence N02°14'W 262.4 ft; thence N0°46'W 262.4 ft; thence N18°02'W 225.08 ft; thence N10°18'W 436.6 ft; thence N47°50'W 464.9 ft; thence N1°15'W 1205.7 ft; thence N89°52'W 151.63 ft; thence South 1326.3 ft; thence N08°41'E 915.4 ft; thence N89°59'W 324.8 ft; thence S0°21' 122.8 ft; thence West 264.8 ft; thence S0°12'E 132.6 ft; thence South 152.7 ft; to a point more or less. Saving and excepting from the above described premises the NE 1/4 of the SW 1/4 of Section 22, T.36S, R.2W, W.M. containing 40.6 acres, more or less. Also the NE 1/4 of the NW 1/4 of Section 23 T.36S, R.1W, W.M. containing 40.6 acres, more or less. Saving and excepting from the above described premises the SW 1/4 of the NW 1/4 of Section 18, T.36S, R.1W, W.M. containing 40.6 acres, also the NE 1/4 of the NE 1/4 of Section 20, T.36S, R.1W, W.M. containing 40.59 acres, also the Pacific and Eastern Railroad right-of-way as shown on the above map, containing 48.44 acres, more or less.

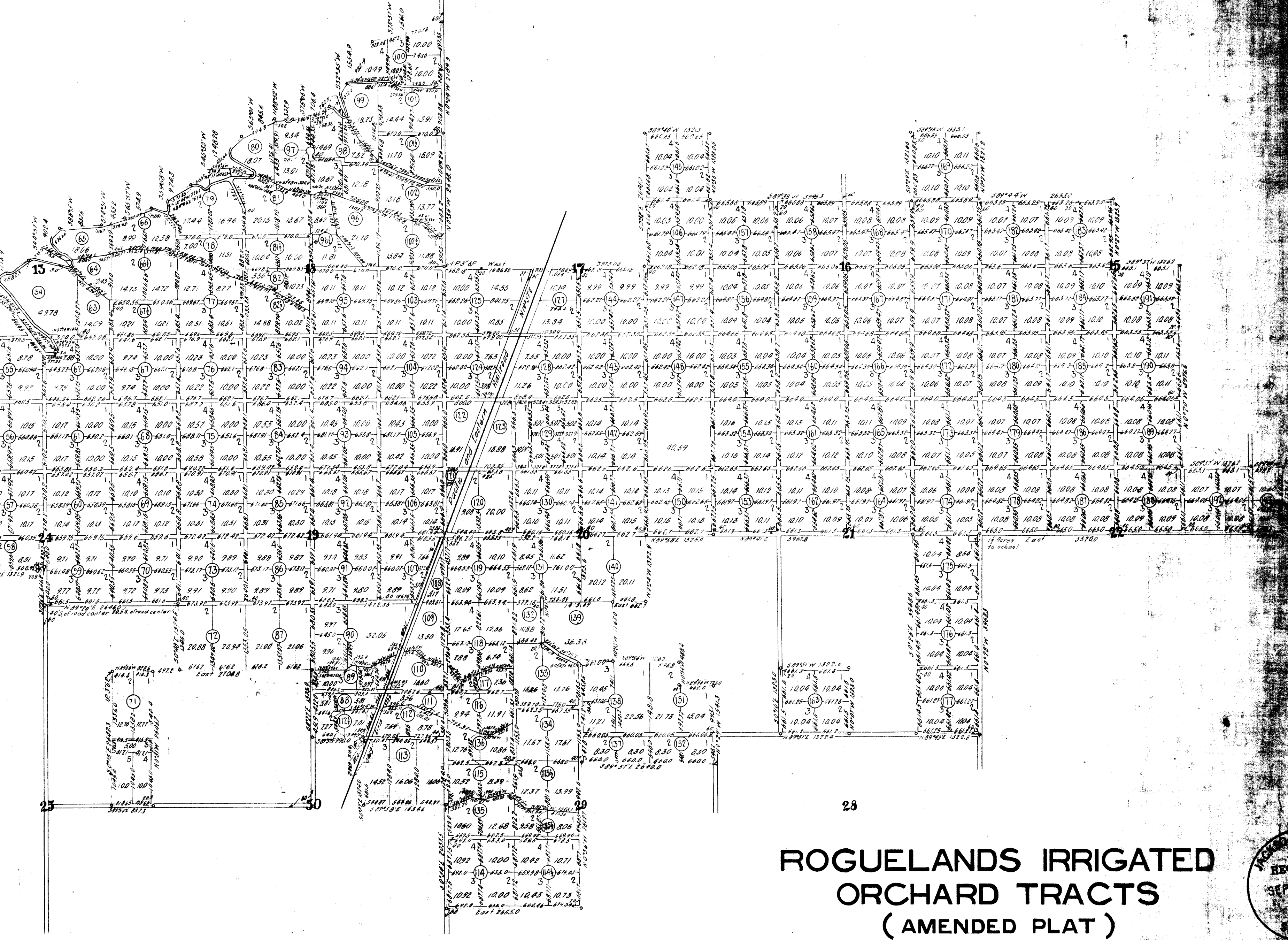
DEDICATION: Know all men by these presents that ROGUELANDS INCORPORATED an Oregon corporation is the owner and JACOBI COUNTY IMPROVEMENT CO. a California corporation is the mortgagee of the above described tracts of land and that they have sold at the same place, Blocks and Roads as shown hereon and that the accompanying plat is a correct representation of said survey and they do hereby dedicate to the public for use as highways all the roads shown hereon and do hereby name and dedicate this subdivision as ROGUELANDS IRRIGATED ORCHARD TRACTS (AMENDED PLAT).

In witness whereof said ROGUELANDS INCORPORATED and JACOBI COUNTY IMPROVEMENT CO. have caused these presents to be executed by their duly authorized officers and their corporate seals to be hereunto affixed on this 12th day of September 1912.

Witness my hand and seal this 12th day of September 1912.

IRVING WORTHINGTON, Secretary
 JACOB I. JACOB, Secretary
 JACOBI COUNTY IMPROVEMENT COMPANY.

STATE OF OREGON } ss. On this 12th day of September 1912 before me appeared Irving Worthington to me personally known who being duly sworn did say that he is the Secretary of ROGUELANDS INCORPORATED an Oregon Corporation and that the seal affixed to said instrument is the corporate seal of said corporation and that said instrument was signed and sealed in the presence of said JACOBI COUNTY IMPROVEMENT CO. by authority of its Board of Directors and said Irving Worthington acknowledged said instrument to be the free act and deed of said Corporation. In testimony whereof I have hereunto set my hand and affixed my official seal.



ROGUELANDS IRRIGATED ORCHARD TRACTS (AMENDED PLAT)

Scale 1 inch = 1320 feet
 September, 1912.

I, Irving Worthington, hereby certify and swear that this plat was made under my direction from notes taken during an actual survey and that said plat is a correct representation of said survey.

Subscribed and sworn to before me this 12th day of Sept. 1912.

Examined and approved by the County Surveyor on the ___ day of ___ 1912.

Filed with the County Clerk on the ___ day of ___ 1912.

By order of County Commissioners Court approving this plat see page ___ of Commissioners Journal of Proceedings.

Examined and approved by the County Assessor on the ___ day of ___ 1912.

Filed for record this ___ day of ___ 1912 at ___ o'clock and recorded in Vol. ___ Page ___ Book of Plat Records of Jackson County.

Irving Worthington, President
Irving Worthington, Secretary

N. P. Mealey, Notary Public for Oregon



INFORMATIONAL MAP FILING

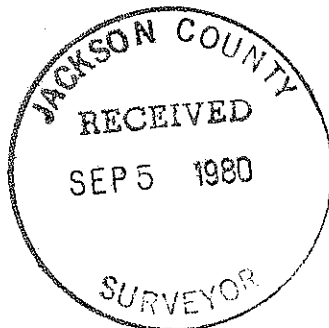
The enclosed sepia of

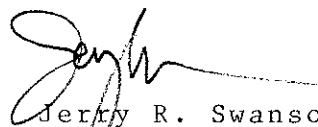
ROQUELANDS IRRIGATED ORCHARD TRACTS
(Amended Plat) unrecorded, dated
September 1912

is filed in the Jackson County Surveyor's office this
date as reference to changes for informational and
historical purposes.

No Surveyor's seal is on the plat and it shall be noted
in the Subdivision Index of this office only under
'Unrecorded Plats' and given a survey number for convenience
of location.

This sepia furnished by Mark E. Boyden, P.L.S.




Jerry R. Swanson
Deputy County Surveyor
September 5, 1980