

SEE SURVEY 5371

5/8" I. Pin
SEE DETAIL

STEWART AVENUE

N 89° 54' 15" E 887.67

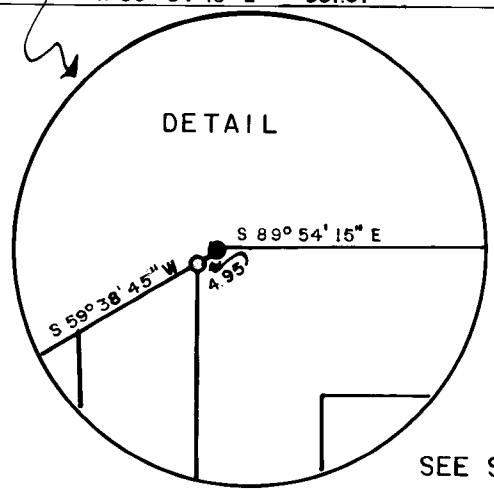
3/4" I. Pin

440.10

B. Cap

N.W. Cor. D.L.C. 84

DETAIL



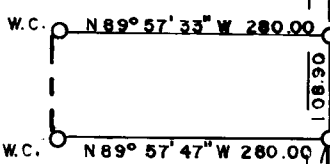
SEE SURVEY 7095

SURVEY FOR JOHN HUGHES
Sec. 36, T. 37S., R. 2 W., W.M.
Jackson County, Oregon
April 9, 1980

ORCHARD

HOME

ASSOCIATION



LEGEND

● Mon. Found

○ 5/8" X 24" I. Pin Set

BASIS OF BEARINGS: Survey 7095



SCALE: 1" = 200'

REGISTERED
PROFESSIONAL
LAND SURVEYOR
Verlyn Thomas
OREGON
MAY 13, 1960
VERLYN D. THOMAS
505

JACKSON COUNTY
RECEIVED
JUN 4 1980
SURVEYOR

8392

N.W. Cor. D.L.C. 81
B. Cap

3/4" X 30" Pin

SEE SURVEY 118

37 2W 36 B & C

8392

John Hughes/Page 2

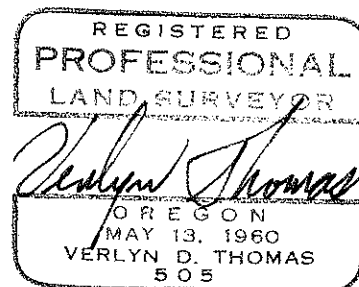
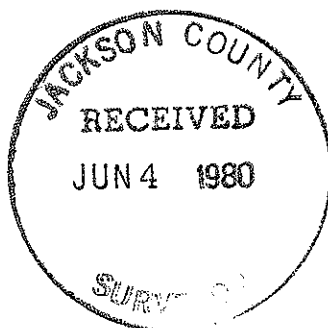
of these two streets as they were dedicated.

A pro-rate location for Dixie Lane was determined between these monumented streets.

The distance of 462.09 between County P.I. monuments on Stewart Avenue was made by this office May 15, 1973, in performing Survey No. 5371.

Additional E.D.M. measurements were taken, monuments established as shown on the accompanying plat.

BASIS OF BEARINGS: Survey No. 7095



SURVEY NO. 8392

SURVEY NARRATIVE TO COMPLY WITH O.R.S. 209.250

FOR: John Hughes
1408 Dixie Lane
Medford, Oregon

PURPOSE: To survey and monument lines of occupancy for purposes of Boundary Line Adjustments between parties affected.

PROCEDURE: Parcels are presently described relative to ORCHARD HOME ASSOCIATION. Two official plats are recorded for this extensive Subdivision, one dated 1890, the other dated 1900. It is assumed the second plat superceded the 1890 plat.

The centerline of Orchard Home Drive was established from monuments set by the County in 1945 (C. Z. Boyden). A measurement was made by this office on August 15, 1974, using E.D.M. equipment, between the spike at Stewart Avenue and the iron pipe at Cunningham Lane. Subsequent sewer construction removed the pipe at Orchard Home Drive and Cunningham Lane. A 3/4" x 30" iron pin was set from remaining control established by this office at the time of measurement, at the exact location for the missing pipe.

An examination of County road notes for Orchard Home Drive and Columbus Avenue revealed these two streets had been established at record distance from the West and East boundaries of ORCHARD HOME ASSOCIATION TRACTS, respectively. (In the case of Orchard Home Drive, the monumented centerline is 20 feet east of the original centerline to account for the Vacation of the Westerly 40 feet).

In view of this procedure for establishing the monumented centerline of these two streets, and the number of surveys performed relative to these monumented locations over the past 35 years, said locations were accepted as representing the true location