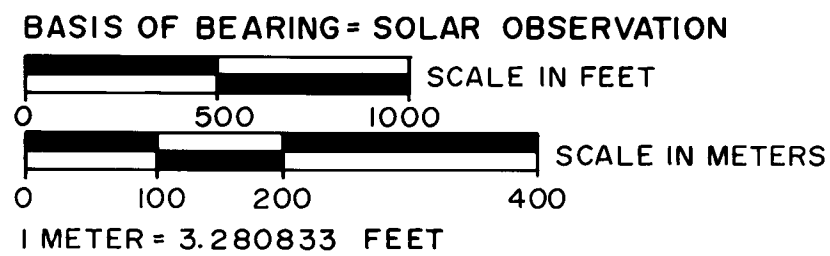


MAP OF SURVEY FOR ROGUE RIVER NATIONAL FOREST

P.O. BOX 520
MEDFORD, OREGON
MAY 27, 1980



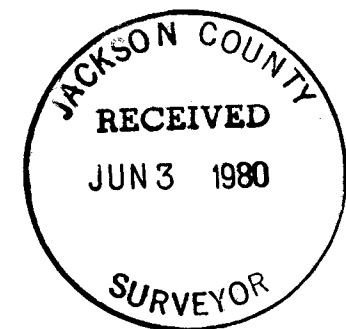
HISTORY OF SURVEYS

THE ORIGINAL SURVEY OF THE WEST LINE OF SECTION 31 WAS ESTABLISHED BY RUFUS S. MOORE UNDER CONTRACT NO. 475, DATED JULY 1883.

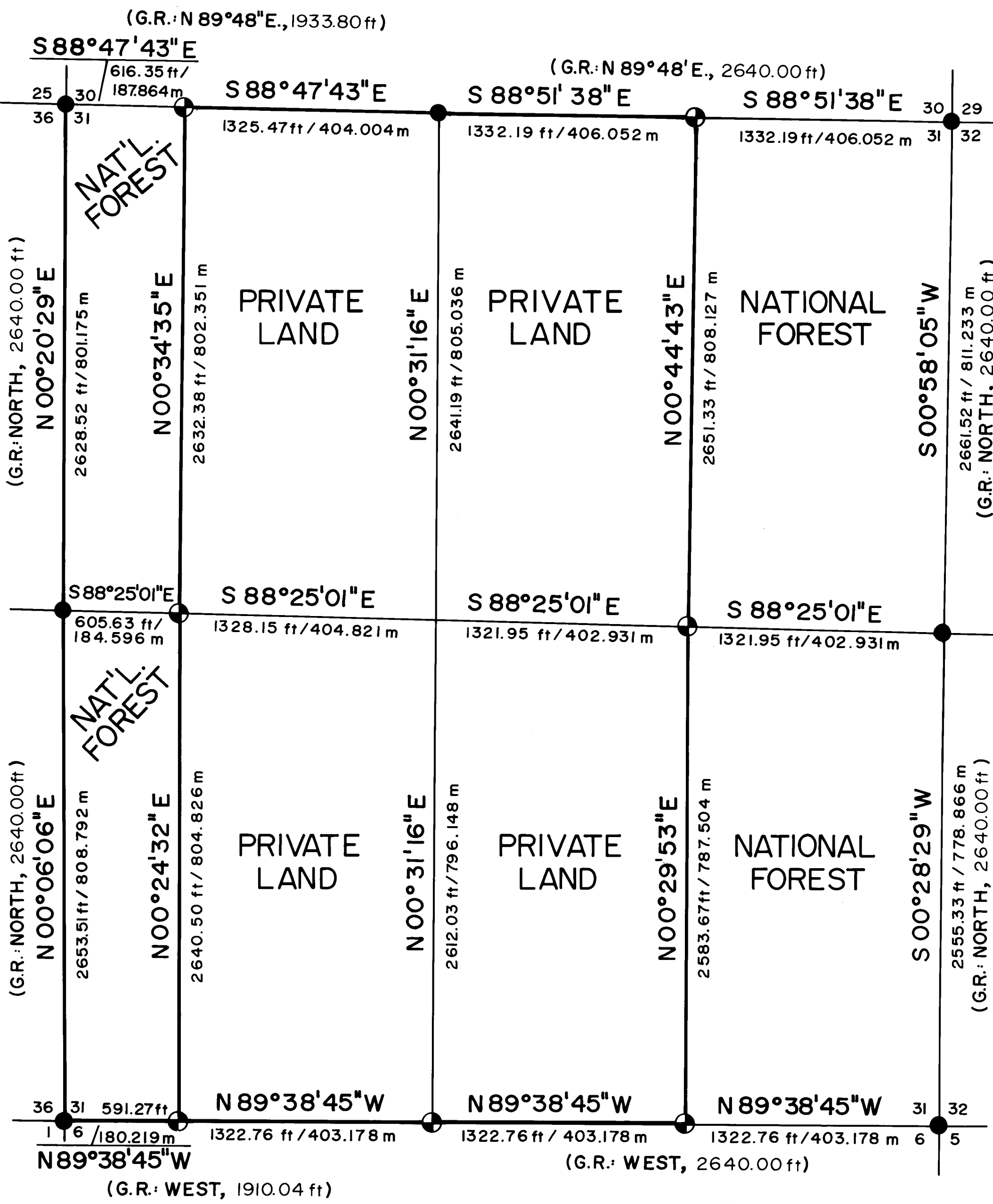
THE ORIGINAL SURVEY OF THE NORTH, EAST AND SOUTH LINES OF SECTION 31 WAS ESTABLISHED BY RUFUS S. MOORE UNDER CONTRACT NO. 504, DATED MAY 27, 1884.

ALL CONTROLLING SECTION AND ONE-QUARTER SECTION CORNERS HAD BEEN REMONUMENTED BY THE BUREAU OF LAND MANAGEMENT.

EVIDENCE WAS FOUND OF AN UNRECORDED SURVEY BELIEVED TO HAVE BEEN PERFORMED BY MEDFORD CORPORATION SURVEYORS, CIRCA 1960. WOODPOSTS HAD BEEN ESTABLISHED AT APPROXIMATE ONE-SIXTEENTH CORNER POSITIONS AND RANDOM BLAZED LINES WERE FOUND THROUGHOUT THE PROJECT.



U.S. DEPARTMENT OF AGRICULTURE FOREST SERVICE	
REGION 6	ROGUE RIVER NAT'L. FOREST
DEPENDENT RESURVEY and SECTION SUBDIVISION SEC. 31, T. 34 S., R. 4 E., W.M. JACKSON COUNTY, OREGON	
REVIEWED BY <i>[Signature]</i>	DATE <i>5/22/80</i>
REVIEWED BY <i>[Signature]</i>	DATE <i>5/22/80</i>



LEGEND

- FOUND STANDARD BLM OR COUNTY SURVEYOR MONUMENT.
- ⊕ SET 2 1/2" DIA. X 30" LG. IRON POST WITH 2 1/2" BRASS CAP UNLESS OTHERWISE NOTED.
- G.R. GOVERNMENT RECORD.
- SECTION LINE CALCULATED FROM TRAVERSE SURVEY.
- PROPERTY LINE ESTABLISHED AND POSTED THIS SURVEY.

CERTIFICATE OF SURVEY

I, HAROLD L. CENTER, REGISTRATION NO. 1071 REGISTERED PROFESSIONAL LAND SURVEYOR, STATE OF OREGON, HEREBY CERTIFY THAT THIS MAP CORRECTLY REPRESENTS A SURVEY MADE BY ME OR UNDER MY DIRECTION IN CONFORMANCE WITH THE LAWS OF THE STATE OF OREGON, AT THE REQUEST OF THE U.S. FOREST SERVICE.

0688

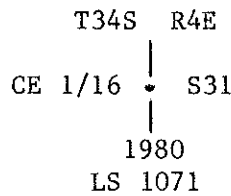
From which the following references:

A 27-inch diameter fir bears N 66° 30' E 11.10 feet distance. Scribed E 1/6 S30 LS 1071 BT.

A 9-inch diameter fir bears S 13° 27' E 32.60 feet distance. Scribed E 1/16 S31 LS 1071 BT.

Center east one-sixteenth corner Section 31, Township 34 South, Range 4 East.

At the corner point I set a 2 1/2-inch diameter galvanized iron post with a 2 1/2-inch diameter brass cap marked:



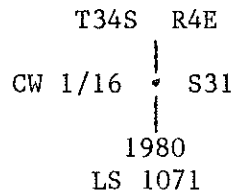
From which the following references:

A 12-inch diameter fir bears N 49° 07' E 32.17 feet distance. Scribed CE 1/16 S31 LS 1071 BT.

A 30-inch diameter cedar bears S 67° 36' E 120.66 feet distance. Scribed CE 1/16 S31 LS 1071 BT.

Center west one-sixteenth corner Section 31, Township 34 South, Range 4 East.

At the corner point I set a 2 1/2-inch diameter galvanized iron post with a 2 1/2-inch diameter brass cap marked:



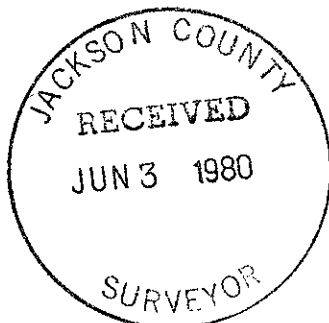
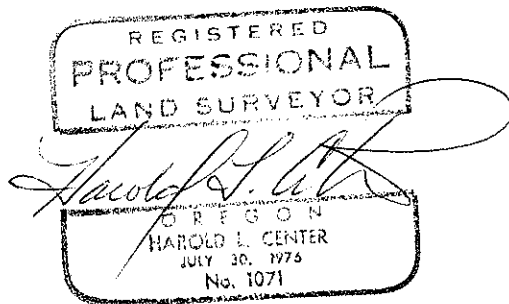
From which the following references:

A 14-inch diameter fir bears S 18° 24' E 44.51 feet distance. Scribed CW 1/16 S31 LS 1071 BT.

A 20-inch diameter fir bears S 30° 31' W 33.46 feet distance. Scribed CW 1/16 S 31 LS 1071 BT.

May 27, 1980

HAROLD L. CENTER
Registered Professional Land Surveyor
Oregon Certificate No. 1071



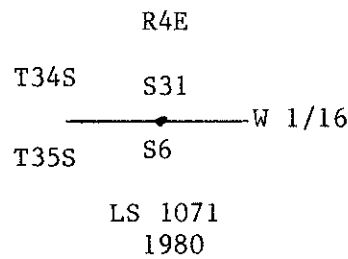
From which the following references:

A 36-inch diameter pine bears N 00° 37' W 8.20 feet distance. Scribed E 1/16 S31 LS 1071 BT.

A 13-inch diameter fir bears S 89° 22' W 25.00 feet distance. Scribed E 1/16 S6 LS 1071 BT.

West one-sixteenth corner common to Section 31, Township 34 South, Range 4 East, and Section 6, Township 35 South, Range 4 East.

At the corner point I set a 2½-inch diameter galvanized iron post with a 2½-inch diameter brass cap marked:



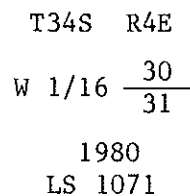
From which the following references:

A 14-inch diameter fir bears S 61° 54' W 35.90 feet distance. Scribed W 1/16 S6 LS 1071 BT.

A 16-inch diameter fir bears N 32° 35' W 12.50 feet distance. Scribed W 1/16 S31 LS 1071 BT.

West one-sixteenth corner common to Sections 30 and 31, Township 34 South, Range 4 East.

At the corner point I set a 2½-inch diameter galvanized iron post with a 2½-inch diameter brass cap marked:



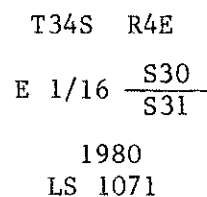
From which the following references:

A 15-inch diameter fir bears S 57° 53' W 56.90 feet distance. Scribed E 1/16 S31 LS 1071 BT.

A 19-inch diameter fir bears N 48° 31' W 10.17 feet distance. Scribed E 1/16 S30 LS 1071 BT.

East one-sixteenth corner common to Sections 30 and 31, Township 34 South, Range 4 East.

At the corner point I set a 2½-inch diameter galvanized iron post with a 2½-inch diameter brass cap marked:



At the corner point I found a standard BLM brass cap monument marked:

U.S. Dept. of Interior
 Unlawful to disturb
 T34S R4E

S31	S32
S6	S5

T35S
 1966
 Cadastral Surveys
 Bureau of Land Management

From which the following references:

- A 8-inch diameter cedar bears N 36° 54' W 10.05 feet distance. Scribe visible.
- A 11-inch diameter fir bears N 64° 56' E 8.24 feet distance. Healed blaze.
- A 16-inch diameter fir bears S 34° 35' E 34.73 feet distance. Healed blaze.
- A 22-inch diameter fir bears S 45° 31' W 7.96 feet distance. Scribe visible.

CORNERS ESTABLISHED THIS SURVEY

One-quarter corner common to Section 31, Township 34 South, Range 4 East, and Section 6, Township 35 South, Range 4 East.

At the corner point I set a 2 1/2-inch diameter galvanized iron post with a 2 1/2-inch diameter brass cap marked:

T34S R4E

1/4	$\frac{S31}{S6}$
-----	------------------

T35S
 1980
 LS 1071

From which the following references:

- A 10-inch diameter fir bears N 36° 27' W 16.80 feet distance. Scribed 1/4 S31 LS 1071 BT.
- A 20-inch diameter fir bears S 66° 06' W 36.00 feet distance. Scribed 1/4 S6 LS 1071 BT.

East one-sixteenth corner common to Section 31, Township 34 South, Range 4 East, and Section 6, Township 35 South, Range 4 East.

At the corner point I set a 2 1/2-inch diameter galvanized iron post with a 2 1/2-inch diameter brass cap marked:

T34S R3E

E 1/16	$\frac{S31}{S6}$
--------	------------------

T35S
 1980
 LS 1071

Section corner common to Sections 29, 30, 31 and 32, Township 34 South, Range 4 East.

At the corner point I found a standard BLM brass cap monument marked:

U.S. Dept. of Interior
Unlawful to disturb
T34S R4E

S30	S29
S31	S32

1966
Cadastral Surveys
Bureau of Land Management

From which the following references:

A 10-inch diameter fir bears S 71° 50' W 9.80 feet distance. Healed blaze.

A 22-inch diameter cedar bears N 55° 03' W 27.00 feet distance. Scribe visible.

A 11-inch diameter fir bears N 03° 38' E 20.00 feet distance. Healed blaze.

A 26-inch diameter fir bears S 53° 56' E 46.20 feet distance. Scribe visible.

One-quarter corner common to Sections 31 and 32, Township 34 South, Range 4 East.

At the corner point I found a standard BLM brass cap monument marked:

U.S. Dept. of Interior
Unlawful to disturb
T34S R4E

1/4	
S31	S32

1966
Cadastral Surveys
Bureau of Land Management

From which the following references:

A 22-inch diameter fir bears S 34° 21' E 38.50 feet distance. Healed blaze.

A 13-inch diameter fir bears S 77° 27' W 23.20 feet distance. Healed blaze.

Section corner common to Sections 31 and 32, Township 34 South, Range 4 East, and Sections 5 and 6, Township 35 South, Range 4 East.

At the corner point I found a standard BLM brass cap monument marked:

U.S. Dept. of Interior
 Unlawful to disturb
 T34S

R3E R4E

S25	S30
S36	S31

1964
 Cadastral Surveys
 Bureau of Land Management

From which the following references:

- A 35-inch diameter fir bears S 57° 59' W 112.90 feet distance. Healed blaze.
- A 35-inch diameter fir bears S 76° 04' W 17.00 feet distance. Healed blaze.
- A 38-inch diameter fir bears N 54° 54' W 43.50 feet distance. Scribe 34 visible.
- A 30-inch diameter firs bears N 50° 47' W 24.00 feet distance. Healed blaze.
- A 40-inch diameter fir bears N 24° 23' E 59.75 feet distance. Scribe visible.
- A 7-inch diameter cedar bears S 68° 48' E 35.10 feet distance. Scribe visible.
- A 35-inch diameter fir bears S 37° 31' E 28.50 feet distance. Healed blaze.

One-quarter corner common to Sections 30 and 31, Township 34 South, Range 4 East.

At the corner point I found a standard BLM brass cap monument marked:

U.S. Dept. of Interior
 Unlawful to disturb
 T34S R4E

1/4 $\frac{S30}{S31}$

1966
 Cadastral Surveys
 Bureau of Land Management

From which the following references:

- A 27-inch diameter fir bears N 28° 16' W 27.50 feet distance. Healed blaze.
- A 6-inch diameter fir bears S 35° 37' E 30.00 feet distance. Healed blaze.
- A 37-inch diameter fir bears S 06° 20' E 4.00 feet distance. Healed blaze.

At the corner position I found a standard BLM brass cap monument marked:

U.S. Dept. of Interior
Unlawful to disturb
T34S

R3E	R4E
S36	S31
S1	S6

T35S
1964
Cadastral Surveys
Bureau of Land Management

From which the following references:

A 10-inch diameter fir bears S 44° 10' W 34.77 feet distance. Healed blaze.

A 18-inch diameter fir bears N 35° 55' W 15.98 feet distance. Healed blaze.

A 12-inch diameter fir bears N 26° 33' E 173.63 feet distance. Healed blaze.

A 12-inch diameter fir bears S 29° 33' E 28.53 feet distance. Healed blaze.

A 48-inch diameter pine snag bears S 38° 09' E 97.30 feet distance. Scribe 34 S 4 E 57 visible.

One-quarter corner common to Section 36, Township 34 South, Range 3 East, and Section 31, Township 34 South, Range 4 East.

At the corner point I found a standard BLM brass cap monument marked:

U.S. Dept. of Interior
Unlawful to disturb
1/4

S36	S31
R3E	R4E

T34S
1964

From which the following references:

A 13-inch diameter fir bears S 59° 42' W 26.30 feet distance. Healed blaze.

A 28-inch diameter cedar bears S 79° 06' W 14.30 feet distance. Healed blaze.

A 17-inch diameter fir bears S 69° 53' E 31.00 feet distance. Healed blaze.

Section corner common to Sections 30 and 31, Township 34 South, Range 4 East, and Sections 25 and 36, Township 34 South, Range 3 East.

SURVEY NARRATIVE TO COMPLY WITH
PARAGRAPH 209.250 OREGON REVISED STATUTES

SURVEY FOR: Rogue River National Forest
P. O. Box 520
Medford, Oregon 97501

LOCATION: Section 31, Township 34 South, Range 4 East,
Willamette Meridian, Jackson County, Oregon.

BASIS OF BEARING: Solar observation

PURPOSE: To establish property corners and mark and post
mutual property lines separating National Forest
and private lands.

PROCEDURE: Prior to commencement of this survey an extensive
search of controlling section and one-quarter sec-
tion corners was performed. All controlling cor-
ners had been recovered and remonumented by the
Bureau of Land Management, Cadastral Surveys
Division with the exception of the south one-
quarter corner. Prior search for this corner had
been performed by Medford Corporation surveyors and
personnel from the County Surveyors Office without
success.

I began this survey with a closed traverse around
the perimeter of Section 31 tying to all
controlling corners. In addition, a random tra-
verse was run along the south line of the section
tying to topographic features to aid in deter-
mining a search area for the south one-quarter
corner.

Search areas were determined utilizing proportional
positions between controlling corners and
topographic features. Extensive search for the
lost corner was performed without success.
Although the distance between certain topographic
calls agreed favorably, overall comparisons failed
to agree sufficiently to allow for reestablishment
of the lost corner solely on topographic calls. I,
therefore, elect to reestablish the corner at the
proportional position as shown on the attached map
of survey.

Remaining corner positions were computed and
established as shown.

CORNERS ACCEPTED FOR CONTROL

Section corner common to Section 36, Township 34 South, Range 3 East,
Section 31, Township 34 South, Range 4 East, Section 6, Township 35 South,
Range 4 East, and Section 1, Township 35 South, Range 3 East.