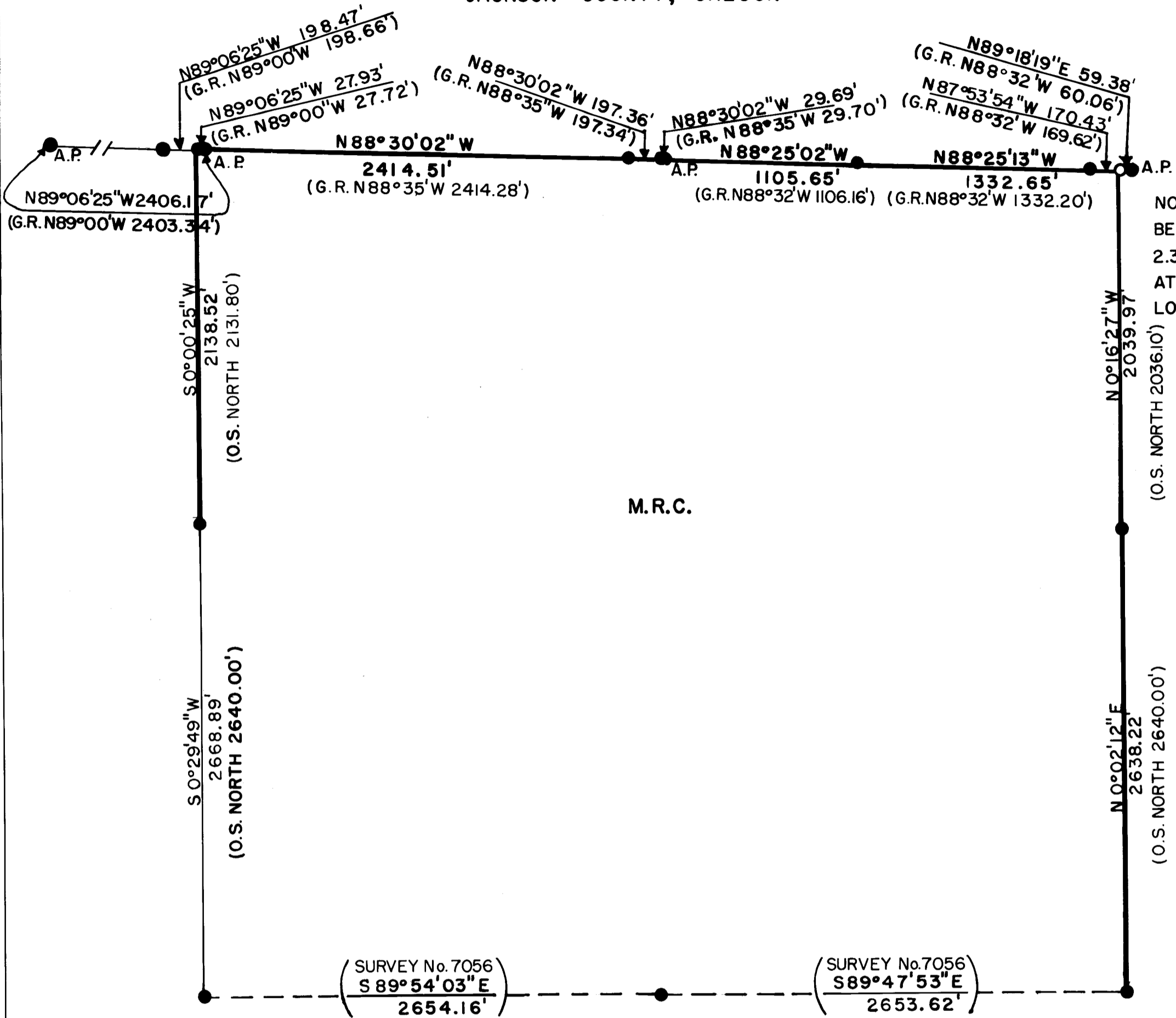


S4, T36S R3E W.M.

JACKSON COUNTY, OREGON



NOTE: CC S3,4
 BEARS N0°16'27\"/>

M.R.C.

(SURVEY No. 7056)
 S 89°54'03\"/>

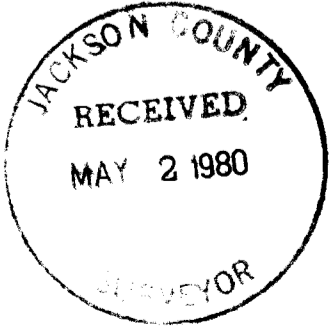
(SURVEY No. 7056)
 S 89°47'53\"/>



- FOUND STANDARD B.L.M. MONUMENT
- FOUND COUNTY MONUMENT
- PROPERTY LINE ESTABLISHED AND POSTED THIS SURVEY *Arthur R. Rambo*
- DATE: 10 APRIL, 1980
- SCALE: 1" = 600'
- BASIS OF BEARING: SOLAR OBSERVATION
- G. R. GOVERNMENT RECORD (1978 RETRACEMENT, B.L.M.)
- A. P. ANGLE POINT
- O. S. ORIGINAL 1883 SURVEY

REGISTERED
PROFESSIONAL
 LAND SURVEYOR

OREGON
 JULY 30, 1976
 ARTHUR R. RAMBO
 No. 1086



CERTIFICATE OF SURVEY
 I, ARTHUR R. RAMBO REGISTRATION
 No. 1086 REGISTERED PROFESSIONAL
 LAND SURVEYOR STATE OF OREGON, HEREBY
 CERTIFY THAT THIS MAP CORRECTLY
 REPRESENTS A SURVEY MADE BY ME IN
 CONFORMANCE WITH THE LAWS OF THE
 STATE OF OREGON.
Arthur R. Rambo
 ARTHUR R. RAMBO
 REGISTERED LAND SURVEYOR
 OREGON LICENSE No. LS-1086

From which:

A fir stub bears $S17^{\circ} 55'E$ 6.2 feet with chopped out face no scribe visible

An $8\frac{1}{2}$ inch dia. Fir bears $S59^{\circ} 29'W$ 12.2 feet unopened

A 7 inch dia. Fir bears $N26^{\circ} 21'E$ 16.0 feet unopened

One-quarter corner common to S3 and 4 T36S R3E. At the corner location I found a standard BLM monument marked:

T36S R3E
1/4
S4 | S3
1962

From which:

A 20 inch dia. Fir bears $S2^{\circ} 17'E$ 21.5 feet unopened

A $9\frac{1}{2}$ inch dia. Fir bears $N47^{\circ} 48'W$ 11.5 feet unopened

Corner common to S3, 4, 9 and 10 T36S R3E. At the corner location I found a standard BLM monument marked:

T36S R3E
S4 | S3

S9 | S10
1962

From which:

An 8 inch dia. Fir bears $N32^{\circ} 20'W$ 33.7 feet unopened

An 8 inch dia. Fir bears $N37^{\circ} 17'E$ 13.6 feet unopened

A 9 inch dia. Yew Wood bears $S63^{\circ} 56'E$ feet with scribes visible

A 25 inch dia. Fir bears $S17^{\circ} 00'E$ 22.4 feet unopened

An 11 inch dia. Fir bears $S26^{\circ} 00'W$ 41.1 feet unopened

A 19 inch dia. Pine stump bears $S83^{\circ} 12'W$ 22.8 feet with scribe visible.

Corner common to S4, 5, 8 and 9 T36S R3E. At the corner location I found a standard BLM monument marked:

T36S R3E
S5 | S4

S8 | S9
1966

From which:

An 11 inch dia. Fir bears $S62^{\circ} 59'E$ 24.9 feet

A 33 inch dia. Fir bears $S38^{\circ} 07'W$ 29.4 feet

A 12 inch dia. Fir bears $S38^{\circ} 47'W$ 36.0 feet

A 17 inch dia. Fir bears $N35^{\circ} 36'E$ 3.8 feet

A 12 inch dia. Fir bears $N43^{\circ} 37'E$ 37.0 feet

A 13 inch dia. Fir bears $N36^{\circ} 31'W$ 23.4 feet

One-quarter corner common to S4 and 5 T36S R3E. At the corner location I found a standard BLM monument marked:

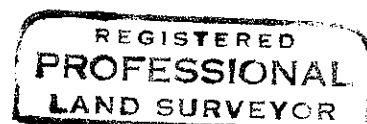
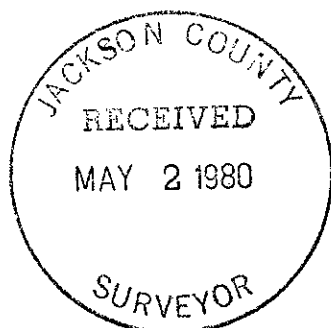
T36S R3E
 $\frac{1}{4}$
S5 | S4
1962

From which:

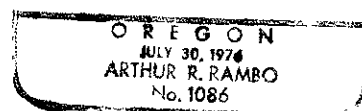
A 10 inch dia. Fir stub bears $N83^{\circ} 52'E$ 18.4 feet marked $1/4S$

A $20\frac{1}{2}$ inch dia. Madrone bears $N23^{\circ} 15'W$ 19.2 feet unopened

A 12 inch dia. Fir bears $N45^{\circ} 30'E$ 17.8 feet unopened



Arthur R. Rambo



Angle Point common to S33 T35S R3E and S4 T36S R3E W.M. At the corner location I found a standard BLM monument marked:

A.P.
T35S R3E
S33

S 4
T36S
1977

From which:

A 15 inch dia. Cedar bears N58⁰ 26'W 34.4 feet marked CS BT

An 11 inch dia. Fir bears S22⁰ 25'E 21.1 feet unopened

A rotten Fir stump indeterminate in size with scribes visible bears N18⁰ 33'E 33.2 feet

North one-quarter corner common to S4 T36S R3E only At the corner location I found a standard BLM monument marked:

S 4
T36S R3E
1978

From which:

A 7 inch dia. Cedar bears S19⁰ 54'W 13.4 feet marked $\frac{1}{4}$ S4 BT

Angle Point ($\frac{1}{4}$ corner) common to Section 33 T35S R3E and 4 T36S R3E W.M. At the corner location I found a standard BLM monument marked:

A.P.
T35S R3E
S 33

S 4
T36S
1978

From which:

A 13 inch dia. Cedar bears N37⁰ 13'E 13.9 feet marked CS BT

A 6 inch dia. Cedar bears S57⁰ 18'W 22.5 feet marked CS BT

Closing corner common to S3 and 4 T36S R3E and 8th Standard Parallel South. At a point 2.34 feet S0⁰ 16' 27" E of the corner location I found a 1 inch dia. pipe with a 2 $\frac{1}{2}$ inch dia. bronze disc marked:

Jackson County
T35S
4 | 3
C C
T36S R3E 926L

From which:

A 39 inch dia. Fir stump bears S12⁰ 48'E 12.4 feet marked BT on lower chopped out face

An 8 $\frac{1}{2}$ inch dia. Cedar bears S44⁰ 58'W 17.5 feet marked CS BT

A 10 $\frac{1}{2}$ inch dia. Fir bears N18⁰ 56'E 12.8 feet unopened

A rotten Fir stub bears N68⁰ 34'E 61.8 feet to face marked BT

A 10 inch dia. Fir bears S14⁰ 59'E 63.5 feet marked CS BT

A 37 inch dia. down Fir bears N61⁰ 35'W 58.9 feet to center of stump hole marked BT in chopped out face on bottom of log

Angle Point common to S34 T35S and S3 T36S R3E. At the corner location I found a standard BLM monument marked:

A.P.
T35S R3E
S34

S 3
T36S
1977

Survey Narrative to Comply With O.R.S. 209.250

Location: Section 4, Township 36 South, Range 3 East, Willamette Meridian, Jackson County, Oregon

Survey For: Medford Resources Corporation P. O. Box 500 Medford, Oregon 97501
 Rogue River National Forest P. O. Box 520 Medford, Oregon 97501

Survey By: Arthur R. Rambo
 331 Bluff Street
 Butte Falls, Oregon 97522

Date: April 9, 1980

Purpose: To post and mark the property lines between Medford Resources Corporation and National Forest land in S4 T36S R3E.

History: Nathaniel Ford surveyed the 8th Standard Parallel South, North Boundary of T36S R3E W.M. under Contract No. 58 dated April 18, 1855. Rufus Moore surveyed T36S R3E and resurveyed the 8th Standard Parallel South, Range 3 East under contract No. 475 dated July 3, 1883. The County Surveyor re-established from original evidence the closing corner common to S4 and 5 in 1973, the closing corner common to S3 and 4 in 1950 and again in 1975, the Angle Point to S33 T35S R3E and S4 T36S R3E (1/4 corner) and the Angle point to S34 T35S R3E and S3 T36S R3E in 1975. The Cadastral Surveyor re-established from original evidence the East and West 1/4 corners and the corner common to S3, 4, 9 and 10 in 1962, and the corner common to S4, 5, 8 and 9 in 1966. Ron Scherler, Cadastral Surveyor, resurveyed the 8th Standard Parallel South between S 33 T35S and S 4 T36S R3E in 1977 and 1978.

Procedure: Ran a traverse with a Theodolite and electronic measuring devise closing to Survey No. 7056. The corners which were set by the Cadastral Surveyor in 1977 and 1978 are not official at this date. These monuments were checked and found to be set within the tolerances as specified in the Manual of Surveying Instructions 1973.

Corners and accessories accepted for control of this survey:
 (Measurement to bearing trees are to the center of trees unless otherwise stated.)

Closing corner common to S4 and S5 T36S R3E and 8th Standard Parallel South. At the corner location I found a 2½ inch diameter bronze disc buried 11 inches under road surface marked:

T35S
Clos. Cor.
 S5 | S4
 T36S R3E
 CS
 1973

From which:
 A 12 inch dia. Fir bears S34° 29'W 38.4 feet unopened
 A 14 inch dia. Fir bears S6° 39'E 75.2 feet unopened
 A 22½ inch dia. Fir snag bears S17° 21'W 42.8 feet marked CC T36S 3 S5