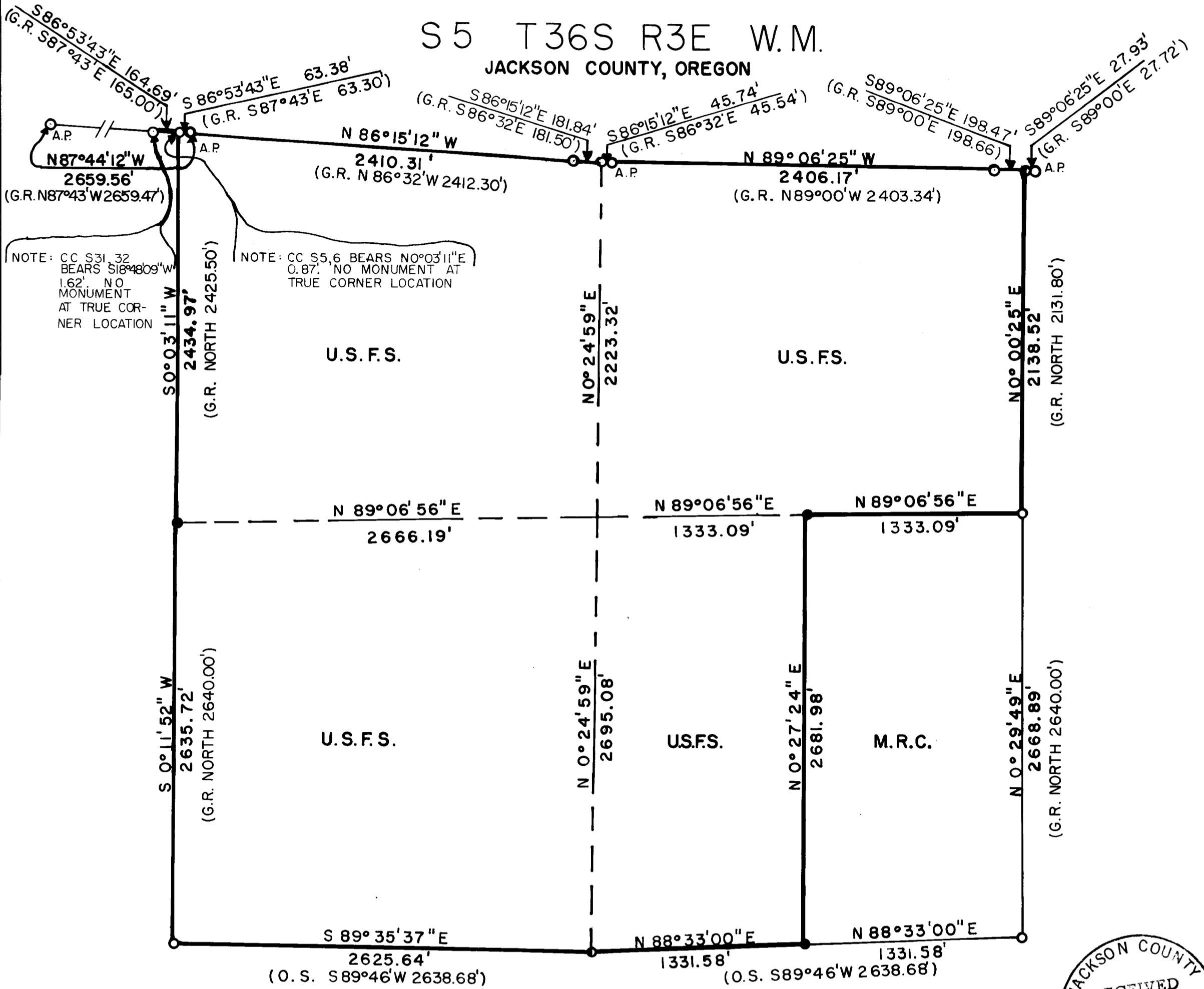
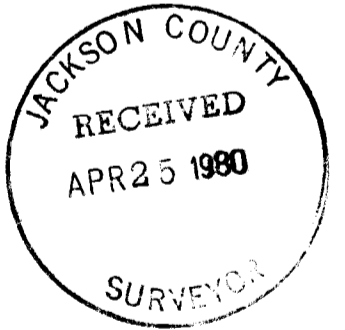


S 5 T 36 S R 3 E W. M.
JACKSON COUNTY, OREGON



NOTE: CC S31.32 BEARS S18°48'09\" W 1.62'. NO MONUMENT AT TRUE CORNER LOCATION

NOTE: CC S5,6 BEARS N0°03'11\" E 0.87'. NO MONUMENT AT TRUE CORNER LOCATION



REGISTERED PROFESSIONAL LAND SURVEYOR

Arthur R. Rambo

OREGON JULY 30, 1975 ARTHUR R. RAMBO No. 1086

- FOUND STANDARD B.L.M. MONUMENT
 - ◐ FOUND COUNTY MONUMENT
 - SET 2 1/2\" G.I. PIPE WITH 2 1/2\" BRONZE DISC
 - PROPERTY LINE ESTABLISHED AND POSTED THIS SURVEY
- DATE: 9 APRIL, 1980
SCALE: 1\" = 600'
BASIS OF BEARING: SOLAR OBSERVATION
G.R. GOVERNMENT RECORD (1963 AND 1978 B.L.M. RETRACEMENT)
A.P. ANGLE POINT
O.S. ORIGINAL 1883 SURVEY

CERTIFICATE OF SURVEY
I, ARTHUR R. RAMBO REGISTRATION N^o1086 REGISTERED PROFESSIONAL LAND SURVEYOR STATE OF OREGON, HEREBY CERTIFY THAT THIS MAP CORRECTLY REPRESENTS A SURVEY MADE BY ME IN CONFORMANCE WITH THE LAWS OF THE STATE OF OREGON.
Arthur R. Rambo
ARTHUR R. RAMBO
REGISTERED LAND SURVEYOR
OREGON LICENSE N^o. LS-1086

From which

A 15 inch dia. Cedar bears $N58^{\circ} 26'W$ 34.4 feet marked CS BT

An 11 inch dia. Fir bears $S22^{\circ} 25'E$ 21.1 feet unopened

A rotten Fir stump indeterminate in size with scribes visible bears $N18^{\circ} 33'E$ 33.2 feet

Corners set this survey:

One quarter corner common to S5 and 6 T36S R3E. At the corner location I found the original stone marked 1/4 on West face. No evidence of the bearing trees was found. Stone is within 5 feet of record call to corner common to S5, 6, 7 and 8 T36S R3E. Stone is accepted as best evidence for this corner. At the corner location I set a $2\frac{1}{2}$ inch dia. x 30 inch iron pipe with $2\frac{1}{2}$ inch dia. brass disc marked:

T36S R3E
1/4
S6+S5

LS1086

Laid stone face down on West side of pipe.

From which I scribed

A 19 inch dia. Pine bears $S51^{\circ} 11'E$ 18.4 feet marked 1/4 S5 BT

An 11 inch dia. Fir bears $S57^{\circ} 00'W$ 17.0 feet marked 1/4 S6 BT

At the East one sixteenth corner common to S5 and 8 T36S R3E by proportionate measurement I set a $2\frac{1}{2}$ inch dia. x 30 inch iron pipe with $2\frac{1}{2}$ inch dia. brass disc marked:

T36S R3E
S5
E1/16 +
S8

LS1086

From which I scribed

An 8 inch dia. Fir bears $S45^{\circ} 42'W$ 32.9 feet marked E 1/16 S8 BT

A $10\frac{1}{2}$ inch dia. Fir bears $N4^{\circ} 24'W$ 30.7 feet marked E 1/16 S5 BT

At the Center East one sixteenth corner S5 T36S R3E I set a $2\frac{1}{2}$ inch dia. rock cap in the Southwest side of an 8 foot by 8 foot rock marked:

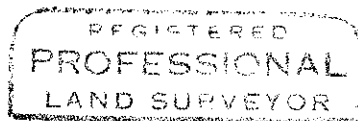
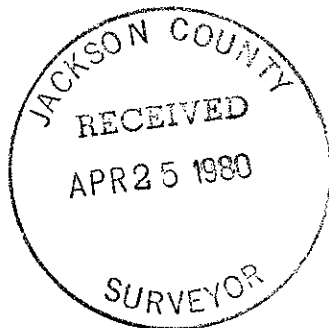
T36S R3E
S5
CE1/16 +

LS1086

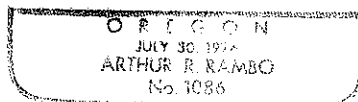
From which I scribed

A 13 inch dia. Fir bears $N26^{\circ} 29'E$ 22.6 feet marked CE 1/16 S5 BT

A 12 inch dia. Fir bears $N17^{\circ} 35'W$ 17.8 feet marked CE 1/16 S5 BT



Arthur R. Rambo



Angle Point common to Section 5 T36S R3E and Section 32 T35S R3E W.M. At the Angle Point location I found a standard BLM monument marked:

T35S R3E
AP S32
S5
T36S
1963

From which

A 10½ inch dia. Fir bears S16° 46' W 30.1 feet unopened

A 12 inch dia. Fir bears N61° 55' W 42.5 feet unopened

North one quarter corner Section 5 T36S R3E only. At the corner location I found a standard BLM monument marked:

1/4 S5
T36S R3E
1978

From which

A 9½ inch dia. Fir bears S63° 48' E 15.3 feet marked 1/4 S5 BT

A 4 inch dia. Cedar bears S52° 59' W 16.7 feet marked X BT

Angle Point common to S32 T35S R3E and S5 T36S R3E W.M. At the Angle Point location I found a standard BLM monument marked:

AP
T35S R3E
S32
S5
T36S
1977

From which

An 8½ inch dia. Fir bears S12° 14' E 53.2 feet marked APT36SR3ES5BT

An 11½ inch dia. Fir bears N38° 51' E 27.0 feet marked APT35SR3ES32BT

Closing corner common to S4 and 5 T36S R3E and 8th Standard Parallel South. At the corner location I found a 2½ inch dia. bronze disc buried 11 inches under road surface marked:

T35S
Clos. Cor.
S5/S4
T36S R3E
CS
1973

From which

A 12 inch dia. Fir bears S34° 29' W 38.4 feet unopened

A 14 inch dia. Fir bears S6° 39' E 75.2 feet unopened

A 22½ inch dia. Fir snag bears S17° 21' W 42.8 feet marked CC T36S 3 S 5

Angle Point common to S33 T35S R3E and S4 T36S R3E W.M. At the corner location I found a standard BLM monument marked:

AP
T35SR3E
S33
S 4
T36S
1977

From which

- A 10 inch dia. Fir stub bears N83⁰ 52' E 18.4 feet marked 1/4 S (orig. tree)
- A 20½ inch dia. Madrone bears N23⁰ 15' W 19.2 feet unopened
- A 12 inch dia. Fir bears N 45⁰ 30' E 17.8 feet unopened

Section corner common to Sections 4, 5, 8 and 9 T36S R3E. At the corner location I found a standard BLM monument marked:

T36S R3E
 $\frac{S5}{S8} \frac{S4}{S9}$
 1966

From which

- An 11 inch dia. Fir bears S62⁰ 59' E 24.9 feet
- A 33 inch dia. Fir bears S38⁰ 07' E 29.4 feet
- A 12 inch dia. Fir bears S38⁰ 47' W 36.0 feet
- A 17 inch dia. Fir bears N 35⁰ 36' E 3.8 feet
- A 12 inch dia. Fir bears N43⁰ 37' E 37.0 feet
- A 13 inch dia. Fir bears N36⁰ 31' W 23.4 feet

One quarter corner common to Sections 5 and 8 T36S R3E W.M. At the corner location I found a 2½ in. dia. bronze disc on a 1 in. dia. pipe marked:

T36S R3E
 $\frac{1}{4}S \frac{5}{8}$
 CS
 1973

with stone marked 1/4 lying along side of pipe.

From which

- A 10 inch dia. Pine bears N 38⁰ 36' W 38.2 feet marked CS BT
- A 14 inch dia. Fir bears S 61⁰ 31' W 23.2 feet marked CS BT

Section corner common to Sections 5, 6, 7 and 8 T36S R3E W.M. At the corner location I found a standard BLM monument marked:

T36S R3E
 $\frac{S6}{S7} \frac{S5}{S8}$
 1962

original stone lying on North side of monument

from which

- A 14 inch dia. Cedar bears N43⁰ 02'E 24.2 feet scribes visible
- A 14 inch dia. Fir bears S78⁰ 54'E 9.9 feet unopened
- A 13 inch dia. Fir bears S19⁰ 10'W 11.4 feet unopened
- A 19 inch dia. Fir bears N 39⁰ 00'W 30.9 feet unopened

Closing Section corner common to Sections 5 and 6 and T36S R3E the 8th Standard Parallel South R3E W.M. At a point S0⁰ 03' 11"W 0.87 feet of the corner location I found a standard BLM monument marked:

T35S
 S32
 $\frac{S6}{C.C.} \frac{S5}{S8}$
 T36S R3E
 1963

from which

- A 10 inch dia. Fir bears S27⁰ 08' E 37.1 feet unopened
- An 11 inch dia. Fir bears S33⁰ 47' W 30.3 feet unopened
- A broken up Fir stub bears S21⁰ 14'W 10.9 feet marked CCT36S R3E S6 (orig. Tree)

Survey Narrative to Comply With O.R.S. 209.250

Location: Section 5, Township 36 South, Range 3 East, Willamette Meridian, Jackson County, Oregon

Survey For: Medford Resources Corporation P. O. Box 550 Medford, Oregon 97501 Rogue River National Forest P. O. Box 520 Medford, Oregon 97501

Survey By: Arthur R. Rambo
331 Bluff Street
Butte Falls, Oregon 97522

Date: April 3, 1980

Purpose: To post and mark the property lines between Medford Resources Corporation and National Forest land.

History: Nathaniel Ford surveyed the 8th Standard Parallel South, North boundary of T36S R3E W.M. under contract No. 58 dated April 18, 1855. Rufus Moore surveyed T36S, R3E and resurveyed the 8th Standard Parallel South through R3E W.M. under contract No. 475 dated July 3, 1883. The County Surveyor re-established from original evidence the South $\frac{1}{4}$ corner and the closing corner common to Section 4 and 5 in 1973 and the angle point common to S33T35S R3E and S4 T36S R3E in 1975. The Cadastral Surveyor re-established from original evidence the East $\frac{1}{4}$ corner and the SW corner in 1962 and the SE corner in 1966. Joseph Gowran, Cadastral Surveyor, resurveyed a portion of the 8th Standard Parallel South in 1963. Ron Scherler, Cadastral Surveyor, resurveyed a portion of the 8th Standard Parallel South 1977-1979.

Procedure: Ran a closed traverse survey with Theodolite and electronic distance meter. The corners which were set by the Cadastral Surveyor from 1977 to 1979 are not official at this date. These monuments were checked and found to be set within the tolerance as specified in the Manual of Surveying Instructions 1973.
Corners and accessories accepted for control of this survey (Measurement to bearing trees are to the center of trees unless otherwise stated.)

Angle Point common to S31 T35S R3E and S6 T36S R3E ($\frac{1}{4}$ corner). At the corner location I found a standard BLM monument marked:

T35S R3E
AP
S31

S6
T36S
1963

From which

a 10 inch Cedar bears N $15^{\circ} 44'$ W 35.1 feet marked T35S R3E AP S31 BT
a 15 inch dia. Fir bears S $30^{\circ} 20'$ W 19.1 feet unopened

One quarter corner common to Sections 4 and 5 T36S R3E. At the corner location I found a standard BLM monument marked:

T36S R3E
1/4
S5/S4
1962