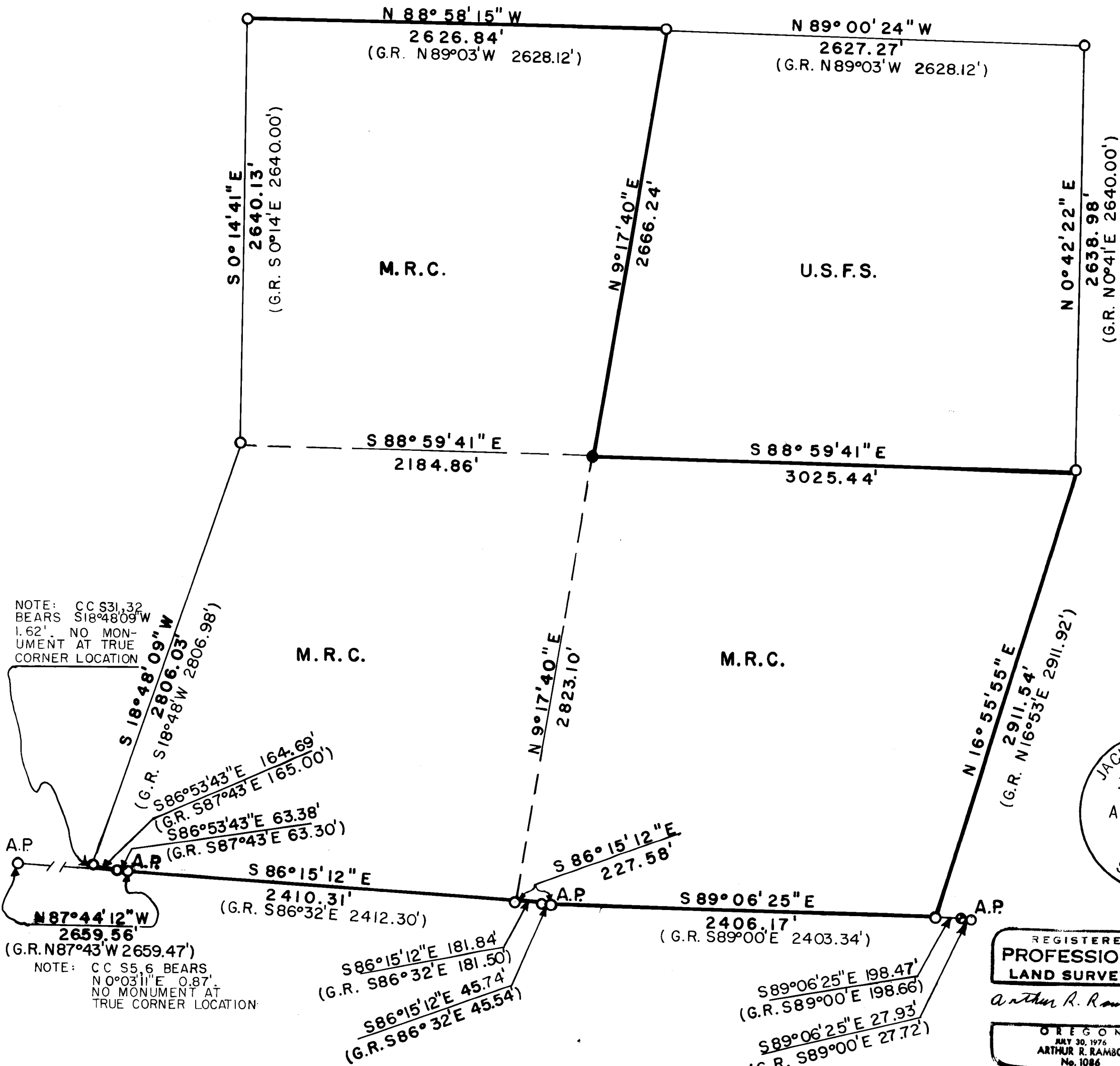
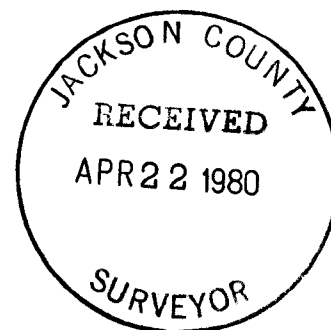


S32 T35S R3E W.M.
JACKSON COUNTY, OREGON



NOTE: CC S31,32 BEARS S18°48'09\" W 1.62'. NO MONUMENT AT TRUE CORNER LOCATION

NOTE: CC S5,6 BEARS N0°03'11\" E 0.87'. NO MONUMENT AT TRUE CORNER LOCATION



REGISTERED PROFESSIONAL LAND SURVEYOR

Arthur R. Rambo

OREGON
JULY 30, 1976
ARTHUR R. RAMBO
No. 1086

- FOUND STANDARD B.L.M. MONUMENT
 - SET 2 1/2\" G.I. PIPE WITH 2 1/2\" BRONZE DISC
 - ⊙ FOUND COUNTY MONUMENT
 - PROPERTY LINE ESTABLISHED AND POSTED THIS SURVEY
- DATE: 7 APR 80
SCALE: 1\" = 600'
BASIS OF BEARING: SOLAR OBSERVATION
G.R. GOVERNMENT RECORD (1963 AND 1978 B.L.M. RETRACEMENT)
A.P. ANGLE POINT



CERTIFICATE OF SURVEY
I, ARTHUR R. RAMBO REGISTRATION N° 1086 REGISTERED PROFESSIONAL LAND SURVEYOR STATE OF OREGON, HEREBY CERTIFY THAT THIS MAP CORRECTLY REPRESENTS A SURVEY MADE BY ME IN CONFORMANCE WITH THE LAWS OF THE STATE OF OREGON.

Arthur R. Rambo
ARTHUR R. RAMBO
REGISTERED LAND SURVEYOR
OREGON LICENSE N° LS-1086

Angle Point common to Section 32T 35S R3E and Section 5 T36S R3E W.M. ($\frac{1}{4}$ corner). At the Angle Point location I found a standard BLM monument marked:

AP
T35S R3E
S32
S 5
T36S
1977

From which:

A 12 inch dia. Fir bears N $38^{\circ} 51'$ E 27.0 feet marked: APT35SR3E S 32 BT
An $8\frac{1}{2}$ inch dia. Fir bears S $12^{\circ} 14'$ E 53.2 feet marked: APT 36S R3E S5 BT

Section corner common to Sections 32 and 33 T35S R3E and 8th Standard Parallel South R3E W.M. At the corner location I found a standard BLM monument marked:

T35S R3E
S32 | S33
S5
T36S
1977

From which:

A $17\frac{1}{2}$ inch dia. Fir bears N $33^{\circ} 26'$ W 49.7 feet marked: T35S R3E S 32 BT
A 15 inch dia. Cedar bears N $35^{\circ} 36'$ E 32.1 feet marked: T35S R3E S33 BT

Angle point common to Section 33T 35S R3E and S4 T36S R3E W.M. 8th Standard Parallel South. At the Angle Point location I found a standard BLM monument marked:

AP
T35S R3E
S33
S 4
T36S
1977

From which:

A 15 inch dia. Cedar bears N $58^{\circ} 26'$ W 34.4 feet marked: CSBT
An 11 inch dia. Fir bears S $22^{\circ} 25'$ E 21.1 feet unopened
A rotten Fir stump indeterminate in size with scribes visible bears
N $18^{\circ} 33'$ E 33.2 feet

One quarter corner common to Sections 32 and 33 T35S R3E W.M. At the corner location I found a standard BLM monument marked:

T35 S R3E
1/4
S32 | S33
T978

From which:

A 12 inch dia. Cedar bears S $61^{\circ} 50'$ E 28.0 feet marked: 1/4 S33 BT
A $9\frac{1}{2}$ inch dia. Fir bears S $61^{\circ} 40'$ W 36.0 feet marked: 1/4 S32 BT

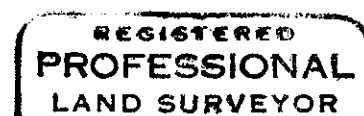
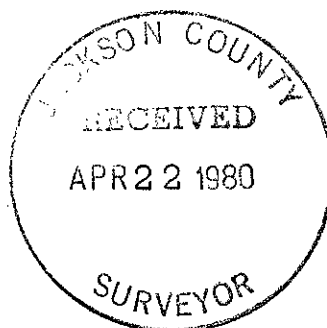
Corners set this survey:

Center one quarter corner S32T35S R3E W.M.
At the corner location I set a $2\frac{1}{2}$ inch dia. by 30 inch galvanized iron pipe with a $2\frac{1}{2}$ inch dia. brass disc on top marked:

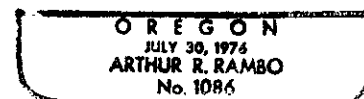
T35S R3E
C $\frac{1}{4}$ + S32
LS1086

From which:

An 11 inch Dia. Fir bears N $63^{\circ} 10'$ E 40.9 feet marked: C $\frac{1}{4}$ S32 BT
A 13 inch dia. Fir bears S $69^{\circ} 55'$ E 30.6 feet marked: C $\frac{1}{4}$ S32 BT



Arthur R. Rambo



One quarter corner common to S29 and 32 T35S R3E. At the corner location I found a standard BLM monument marked:

T35S R3E
 $\frac{1}{4}$ S29
 S32
 1977

From which

An 1 $\frac{1}{2}$ inch dia. Pine bears S 24⁰ 18' W 84.5 feet marked 1/4 S32 BT
 A 7 $\frac{1}{2}$ inch dia. Fir bears N 29⁰ 32' W 16.9 feet marked 1/4 S29 BT
 A 3/4 inch dia. solid iron pin in mound of stone bears N 67⁰ 47' E 13.3 feet

Section corner common to Sections 29, 30, 31 and 32 T35S R3E. At the corner location I found a standard BLM monument marked:

T35 S R3E
 S30 | S29
 S31 | S32
 1977

From which

A 12 inch dia. Fir bears S 30⁰ 07' E 28.2 feet unopened
 A 9 $\frac{1}{2}$ inch dia. Fir bears N 83⁰ 21' E 8.3 feet unopened
 A 12 inch dia. Fir bears N 27⁰ 57' W 5.8 feet unopened
 An 18 inch dia. Fir bears S 70⁰ 01' W 16.5 feet unopened

One quarter corner common to Section 31 and 32 T35S R3E W.M. At the corner location I found a standard BLM monument marked:

T35S R3E
 $\frac{1}{4}$
 S31 | S32
 1978

From which

A 7 $\frac{1}{2}$ inch dia. Cedar bears S 74⁰ 59' E 27.1 feet marked 1/4 S32 BT
 A 7 inch dia. Fir bears N 45⁰ 11' W 41.1 feet marked partially healed blaze with scribe visible.

Section corner common to S31 and 32 T35S R3E and the 8th Standard Parallel South. At a point 1.62 feet N 18⁰ 48' 09" E of the corner location I found a standard BLM Monument marked:

T35S R3E
 S31 | S32
 S5
 T36S
 1963

From which

A 7 $\frac{1}{2}$ inch dia. Fir bears N 51⁰ 02' W 7.2 feet unopened
 A 10 $\frac{1}{2}$ inch dia. Fir bears N 81⁰ 40' E 49.4 feet unopened

Angle point common to S32T35S R3E and S5T36S R3E. At the angle point location I found a standard BLM monument marked:

T35S R3E
 AP S32
 S5
 T36S
 1963

From which

A 10 $\frac{1}{2}$ inch dia. Fir bears S16⁰ 46' W 30.1 feet unopened
 A 12 inch dia. Fir bears N 61⁰ 55' W 42.5 feet unopened

South one quarter corner Section 32T35S R3E only. At the corner location I found a standard BLM monument marked:

T35S R3E
 $\frac{1}{4}$ S32
 1977

From which

A 21 $\frac{1}{2}$ inch dia. Fir bears N 47⁰ 13' W 34.1 feet marked $\frac{1}{4}$ S32 BT
 A 5 $\frac{1}{2}$ inch dia. Fir bears N 47⁰ 47' E 34.3 feet marked X upper face
 BT lower face

SURVEY NARRATIVE TO COMPLY WITH O.R.S. 209.250

Location: Section 32, Township 35 South, Range 3 East, Willamette Meridian, Jackson County, Oregon

Survey for: Medford Resources Corporation
P. O. Box 550
Medford, Oregon 97501

Rogue River National Forest
P. O. Box 520
Medford, Oregon 97501

Survey by: Arthur R. Rambo
331 Bluff Street
Butte Falls, Oregon 97522

Date: April 2, 1980

Purpose: To mark and post the property lines between Medford Resources Corporation and National Forest land.

History: Nathaniel Ford surveyed T35S R3E W.M. and the 8th Standard Parallel South - North boundary of T36S R3E W.M. under contract No. 58 dated April 18, 1855. Rufus Moore resurveyed the 8th Standard Parallel South - North boundary of T36S R3E W.M. under contract No. 475 dated July 3, 1883. Joseph Gowran, cadastral surveyor, re-surveyed a portion of the 8th Standard Parallel South Willamette Meridian in 1963.

The County Surveyor re-established the following corners from original evidence: corner common to 28, 29, 32 and 33 T35S R3E in 1930; Angle Point to S33T35S R3E and S4T36S R3E (Ford Standard corner for S4 and 5T36S R3E) 1975. Ron Scherler, Cadastral Surveyor, resurveyed a portion of T35S R3E and a portion of the 8th Standard Parallel South under instruction, Group 942, Oregon 1977-1979. Recorded survey No. 4080 re-established the corner common to 29, 30, 31 and 32 T35S R3E W.M. from original evidence.

Procedure: Ran a closed traverse survey with a Wild T-16 Theodolite and Hewlett Packard 3805A distance meter.
The corners set by the cadastral surveyor 1977-1979 are not official yet. These corners were checked and found to be set within the tolerances as specified in the Manual of Surveying Instructions 1973.

Corners and accessories found and accepted for this survey. Measurements to bearing trees are to the center of trees unless stated otherwise.

Angle Point common to S31T35S R3E and S6T36S R3E (1/4 cor.) at the corner location I found a standard BLM monument marked:

T35S R3E
AP
S31
S 6
T36S
1963

From which

A 10 inch dia. Cedar bears N 15⁰ 44' W 35.1 feet marked T35S R3E AP S31 BT
A 15 inch dia. Fir bears S 30⁰ 20' W 19.0 feet unopened

Section corner common to S28, 29, 32 and 33T35S R3E at the corner location I found a standard BLM monument marked:

T35S R3E
S29 | S28
S32 | S33
1977

From which

A 7½ inch dia. Fir bears S 9⁰ 52' E 17.5 feet marked T35S R3E S33 BT
A 10 inch dia. Fir bears S 64⁰ 00' W 28.4 feet marked T35S R3E S32 BT
A 10 inch dia. Fir bears N 58⁰ 00' E 27.5 feet marked T35S R3E S28 BT
A 14 inch dia. Fir bears N 0⁰ 20' E 63.3 feet marked T35S R3E S29 BT
A down Fir bears N 44⁰ 23' W 17.2 feet to stump hole scribes visible on tree (CS tree)
A 9 inch dia. Fir stump bears S 11⁰ 15' E 18.4 feet (CS tree)