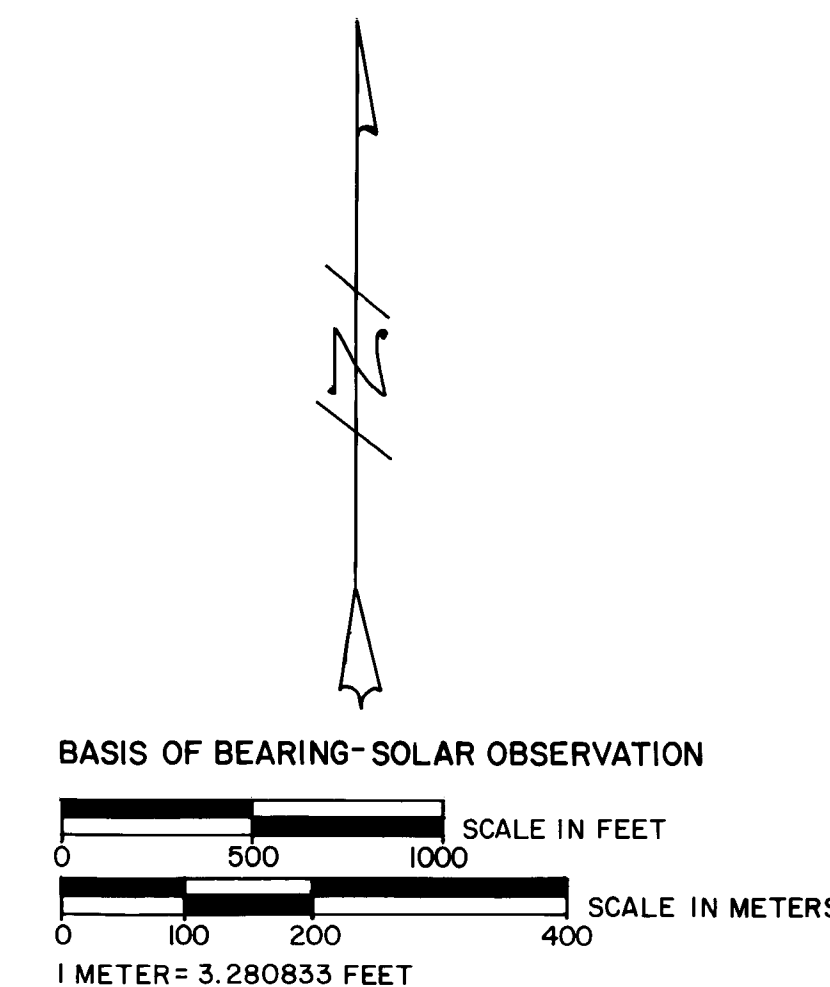
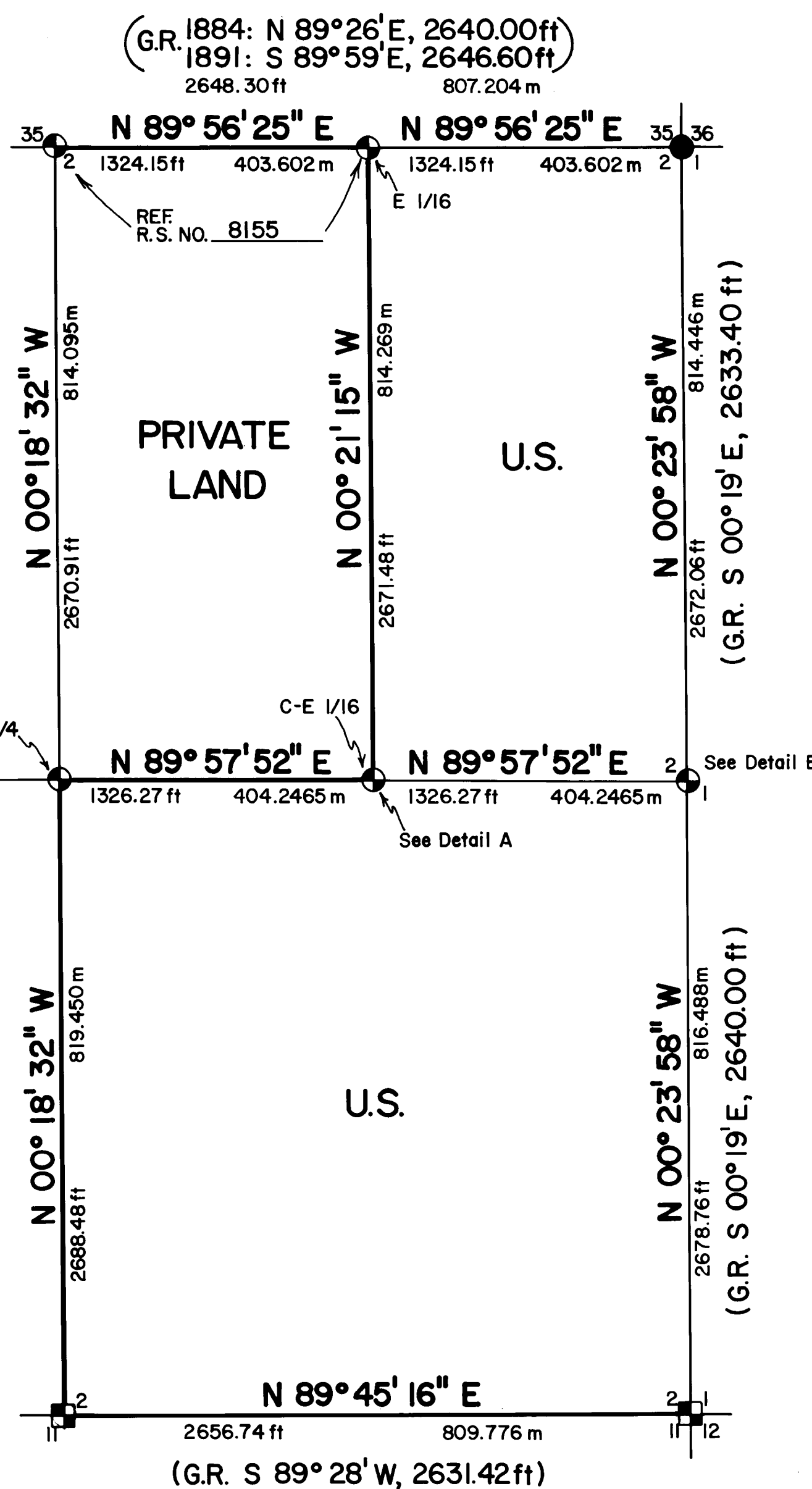
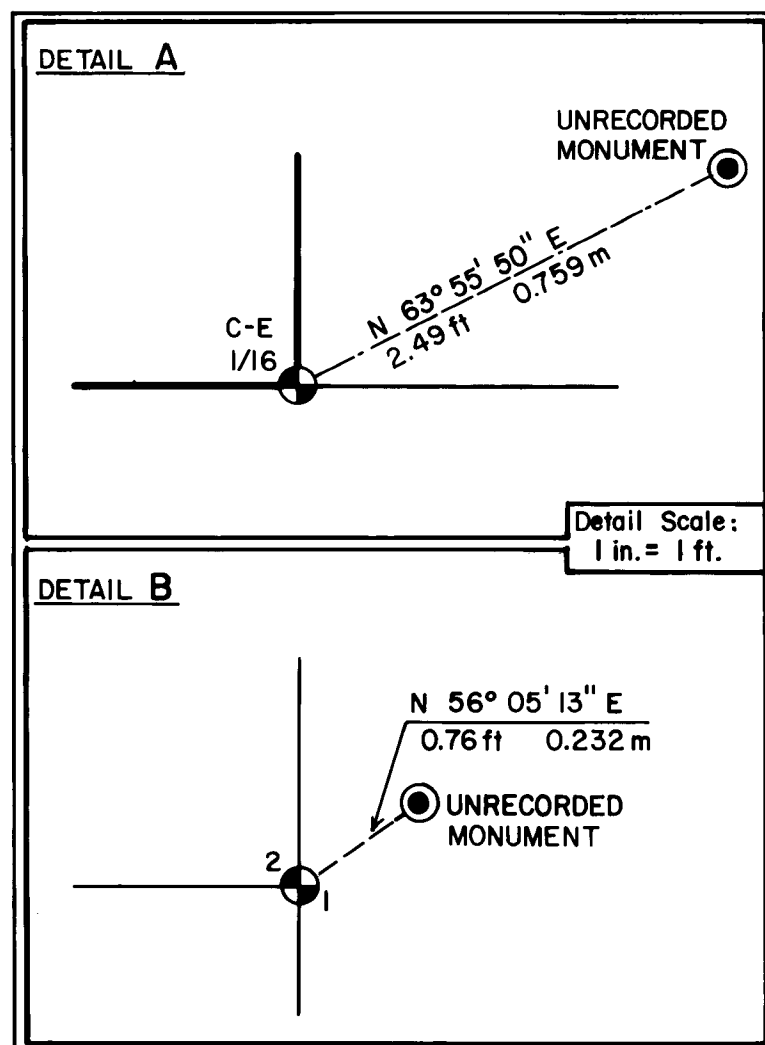


MAP OF SURVEY
FOR
ROGUE RIVER NATIONAL FOREST
P.O. BOX 520
MEDFORD, OREGON
DECEMBER 31, 1979



HISTORY OF SURVEYS

SURVEY OF THE TOWNSHIP LINE WAS PERFORMED BY RUFUS S. MOORE IN MARCH, 1884 UNDER CONTRACT NO. 496.

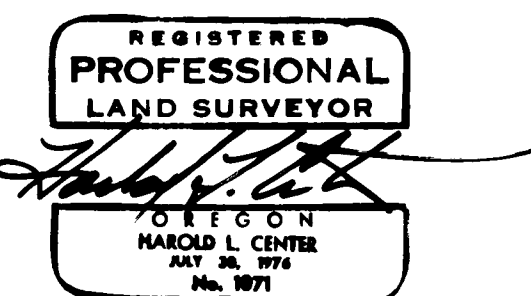
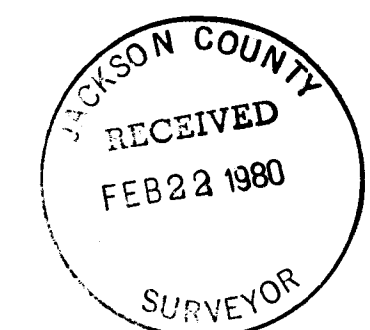
RESURVEY OF THE TOWNSHIP LINE WAS PERFORMED BY PETER APPLAGATE IN APRIL, 1891, UNDER CONTRACT NO. 571.

THE SECTION SUBDIVISION WAS PERFORMED BY RUFUS S. MOORE IN MARCH, 1884, UNDER CONTRACT NO. 496.

THE SECTION CORNER COMMON TO SECTIONS 1, 2, 11, & 12, AND THE QUARTER CORNER BETWEEN SECTIONS 2 & 11, WERE REMONUMENTED BY THE COUNTY SURVEYOR IN 1959. THESE WERE ACCEPTED BY THE BUREAU OF LAND MANAGEMENT IN 1962.

THE SECTION CORNER COMMON TO SECTIONS 35 & 36 (TOWNSHIP 31 SOUTH) AND SECTIONS 1 & 2 (TOWNSHIP 32 SOUTH), WAS REMONUMENTED BY THE BUREAU OF LAND MANAGEMENT IN 1962.

AN INCOMPLETE AND UNRECORDED SURVEY WAS PERFORMED IN SECTION 2 BY ELK LUMBER COMPANY CORP. IN 1968.



LEGEND

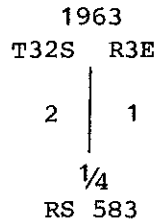
- FOUND STANDARD BLM OR COUNTY SURVEYOR MONUMENT.
- ⊙ SET 2 1/2" DIA. X 30" LG. IRON POST WITH 2 1/2" DIA. BRASS CAP UNLESS OTHERWISE NOTED.
- ⊠ FOUND 1" DIA. IRON POST WITH 2" DIA. BELL PIPE EXPANDER FILLED WITH POT METAL.
- PROPERTY LINE ESTABLISHED AND POSTED THIS SURVEY.
- SECTION LINE CALCULATED FROM TRAVERSE SURVEY.
- ⊙ FOUND UNRECORDED MONUMENT.

CERTIFICATE OF SURVEY

I, HAROLD L. CENTER, REGISTRATION NO. 1071 REGISTERED PROFESSIONAL LAND SURVEYOR, STATE OF OREGON, HEREBY CERTIFY THAT THIS MAP CORRECTLY REPRESENTS A SURVEY MADE BY ME OR UNDER MY DIRECTION IN CONFORMANCE WITH THE LAWS OF THE STATE OF OREGON, AT THE REQUEST OF THE U.S. FOREST SERVICE.

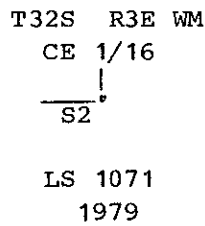
U.S. DEPARTMENT OF AGRICULTURE	
FOREST SERVICE	
REGION 6	ROGUE RIVER NAT. FOREST
DEPENDENT RESURVEY and SECTION SUBDIVISION SEC. 2, T. 32 S., R. 3 E., W.M. JACKSON COUNTY, OREGON	
REVIEWED BY <i>D.J. McDonald</i>	DATE 2/8/1980
REVIEWED BY <i>R.J. Athaway</i>	DATE 2/19/80

An unrecorded 1-inch diameter galvanized iron pipe with 2-inch diameter bell pipe expander bears N 56° 05' E 0.76 feet distant. Expander marked:



The Center-East one-sixteenth of Section 2, Township 32 South, Range 3 East, Willamette Meridian.

At the proportioned position I set a 2½-inch diameter by 30-inches long galvanized iron post with a 2½-inch diameter brass cap marked:



From which the following references:

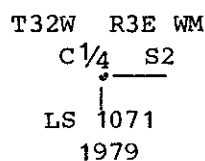
A Douglas-fir 12-inches in diameter bears N 71° 30' E 11.90 feet distant. Scribed CE 1/16 S2 LS 1071 BT on a double blaze.

A Douglas-fir 23-inches in diameter bears N 78° 00' W 33.70 feet distant. Scribed CE 1/16 S2 LS 1071 BT on a double blaze.

An unrecorded 2-inch bell pipe expander filled with pot metal set flush with the ground believed to be set by Boise Cascade Corporation bears N 63° 55' 50" E 2.49 feet distant.

Center ¼ Section 2, Township 32 South, Range 3 East, Willamette Meridian.

At the corner position I set a 2½-inch diameter by 30-inches long galvanized iron post with a 2½-inch diameter brass cap marked:



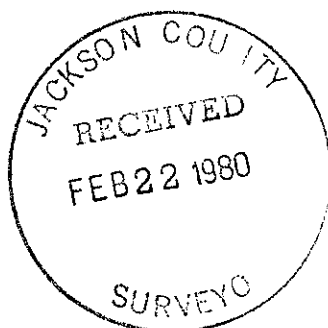
From which the following references:

A cedar 12-inches in diameter bears N 84° 16' W 19.1 feet distant. Scribed C ¼ S2 LS 1071 BT on a double blaze.

A Douglas-fir 22-inches in diameter bears S 02° 06' E 130.20 feet distant. Scribed C ¼ S2 LS 1071 BT on a double blaze.

December 31, 1979

HAROLD L. CENTER
 Registered Professional Land Surveyor
 Oregon Certificate No. 1071



At the corner location I found a 1-inch diameter galvanized iron pipe with a 2-inch bell pipe expander filled with pot metal marked:

1959
 T32S R3E
 BLM

2	1
11	12

1962
 SEC. COR.
 CS

From which the following references:

- A fir 22-inches in diameter bears N 77° 27' W 37.80 Feet distant with a partially healed blaze.
- A cedar 16-inches in diameter bears N 05° 58' W 85.60 feet distant with a partially healed blaze.
- A pine 18-inches in diameter bears N 64° 41' E 61.10 feet distant with a partially healed blaze.
- A fir 66-inches in diameter bears S 40° 18' E 69.50 feet distant with a partially healed blaze.
- A fir 16-inches in diameter bears S 11° 44' W 58.60 feet distant with a partially healed blaze.
- A dead fir 50-inches in diameter bears S 25° 42' W 29.60 feet distant with a partially healed blaze.
- A cedar 20-inches in diameter bears S 84° 31' W 47.70 feet distant with a partially healed blaze.

CORNERS ESTABLISHED THIS SURVEY

The one-quarter corner common to Sections 1 and 2, Township 32 South, Range 3 East, Willamette Meridian.

At the corner position I set a 2½-inch diameter by 30-inches long galvanized iron post with a 2½-inch diameter brass cap marked:

T32S R3E WM
 ¼

S2	S1
----	----

LS 1071
 1979

From which the following references:

- A pine 9-inches in diameter bears N 32° 34' E 47.60 feet distant. Scribed ¼ S1 LS 1071 BT on a double blaze.
- A Douglas-fir 12-inches in diameter bears S 65° 18' W 24.20 feet distant. Scribed ¼ S2 LS 1071 BT on a double blaze.

At the corner location I found an unrecorded 1-inch diameter galvanized iron pipe with a 2-inch diameter bell pipe expander filled with pot metal marked:

1963
T32S R3E
3 | 2
1/4 Cor
RS 583

The original stone found upside down on the North-Northeasterly side of the iron monument.

From which following original references:

A 6-inch diameter cedar snag bears S 01° 28' E 2.30 feet distant to side center, with scribed figures 1/4 S BT on a single blaze.

From this evidence I accepted the found monument to be correctly located and added the following marks, 1979 and LS 1071, to the monument.

From which the following unrecorded references believed marked by RS 583:

A cedar 16-inches in diameter bears N 61° 48' E 12.20 distant. Scribing illegible within a double blaze.

A cedar 20-inches in diameter bears S 26° 54' W 26.10 distant. Scribing illegible within a double blaze.

The quarter corner common to Sections 2 and 11, Township 32 South, Range 3 East, Willamette Meridian.

At the corner position I found a 1-inch diameter galvanized iron pipe with a 2-inch diameter bell pipe expander filled with pot metal marked:

1950
T32S R3E
US BLM
2

11
1962
1/4 Cor
CS

From which the following references:

A hemlock 15-inches in diameter bears S 44° 55' W 27.50 feet distant. Scribing illegible on a partly healed blaze.

A hemlock stump 4 feet in height 14-inches in diameter bears N 68° 15' E 24.95 feet distant. Scribed figures 1/4 S2 BT visible on a rotted face.

The section corner common to Sections 1, 2, 11 and 12, Township 32 South, Range 3 East, Willamette Meridian.

NARRATIVE TO COMPLY WITH OREGON
REVISED STATUTES PARAGRAPH 209.250

SURVEY FOR: Rogue River National Forest
P. O. Box 520
Medford, Oregon 97501

LOCATION: Section 2, Township 32 South, Range 3 East,
Willamette Meridian, Jackson County, Oregon.

BASIS OF BEARING: Solar observation

PURPOSE: To establish property corners and mark and post
National Forest boundary within Section 2.

PROCEDURE: Prior to commencement of this survey an investiga-
tion of corner control was made. The Northeast and
Northwest corners were remonumented by the Bureau
of Land Management from original evidence. The
Southeast and the South one quarter corners were
remonumented by the Jackson County Surveyors Office
from original evidence. Unrecorded monuments
believed set by Boise Cascade Corporation were
found near the corner positions for the West and
East one quarter corners. The recovered West one
quarter corner monument was found to be correctly
positioned from original evidence, the East one
quarter corner monument appeared to have been set
by single proportion measurement as I find no ori-
ginal evidence of this corner. I then proportioned
this corner as shown on the attached map of survey.
The North one quarter corner and East one-sixteenth
corner were established as part of Recorded Survey
No. 8155 (Section 35, Township 31 South, Range 3
East). From the identified corner control, I pro-
ceeded to subdivide and mark lines as shown on the
attached map of survey.

CORNERS ACCEPTED FOR CONTROL

The following corners were described within Record Survey No. 8155 on file
with Jackson County Surveyors and will not be redescribed within this
narrative.

Section corners common to Sections 35 and 36, Township 31 South, Range 3
East, and Sections 1 and 2, Township 32 South, Range 3 East, Willamette
Meridian;

East one-sixteenth common to Section 35, Township 31 South, Range 3 East,
and Section 2, Township 32 South, Range 3 East, Willamette Meridian;

Quarter corner common to Section 35, Township 31 South, Range 3 East, and
Section 2, Township 32 South, Range 3 East, Willamette Meridian; and

Section corner common to Sections 34 and 35, Township 31 South, Range 3
East, and Sections 2 and 3, Township 32 South, Range 3 East, Willamette
Meridian.

CORNERS DESCRIBED THIS SURVEY:

Quarter corner common to Sections 2 and 3, Township 32 South, Range 3 East,
Willamette Meridian.