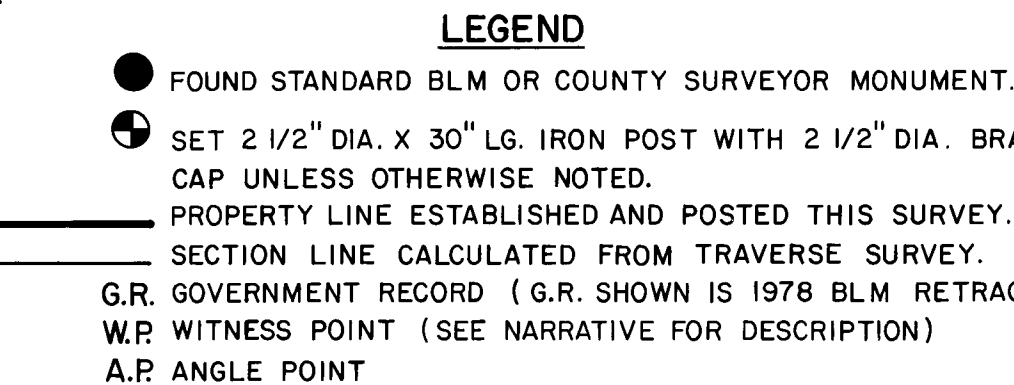


[illegible]

I, HAROLD L. CENTER, REGISTRATION NO. 1071, REGISTERED PROFESSIONAL LAND SURVEYOR STATE OF OREGON, HEREBY CERTIFY THAT THIS MAP CORRECTLY REPRESENTS A SURVEY MADE BY ME OR UNDER MY DIRECTION IN CONFORMANCE WITH THE LAWS OF THE STATE OF OREGON, AT THE REQUEST OF THE U.S. FOREST SERVICE.

JACKSON COUNTY
RECEIVED
APR 11 1980
SURVEYOR

REVIEWED BY R.J. Hathaway DATE 4/10/80

At the corner point I set a 2½-inch diameter 30-inch long galvanized iron post with 2½-inch diameter brass cap marked:

T35S R3E
W 1/16

C — C

S34

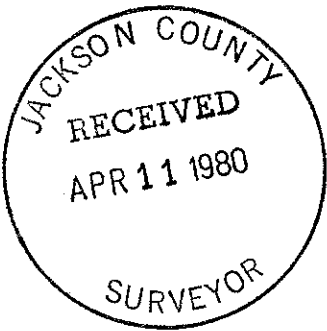
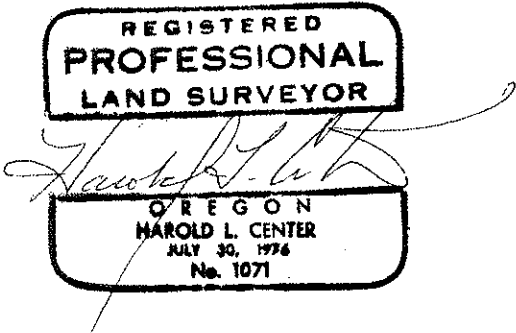
1980
LS 1071

From which the following references:

- A 10-inch diameter fir bears S 41° 13' E 27.40 feet distance. Scribed CW 1/16 S34 LS 1071 BT.
- A 14-inch diameter fir bears N 78° 09' W 41.10 feet distance. Scribed CW 1/16 S34 LS 1071 BT.

February 15, 1980

HAROLD L. CENTER
Registered Professional Land Surveyor
Oregon Certificate No. 1071

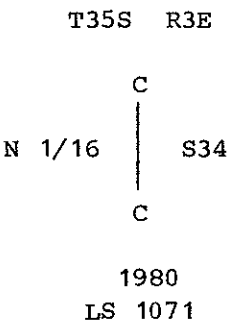


- A 11-inch diameter cedar bears S 45° 30' W 17.80 feet distance. Scribe visible.
- A 12-inch diameter fir bears N 15° 45' E 13.00 feet distance. Healed blaze.

CORNERS ESTABLISHED THIS SURVEY

Center North one sixteenth corner Section 34, Township 35 South, Range 3 East, Willamette Meridian.

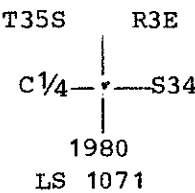
At the corner point I set a 2½-inch diameter 30-inch long galvanized iron post with 2½-inch diameter brass cap marked:



- From which the following references:
- A 11-inch diameter pine bears N 76° 44' W 31.30 feet distance. Scribed CN 1/16 S34 LS 1071 BT.
 - A 10-inch diameter pine bears N 88° 13' E 32.80 feet distance. Scribed CN 1/16 S 34 LS 1071 BT.

Center one quarter corner Section 34, Township 35 South, Range 3 East, Willamette Meridian.

At the corner point I set a 2½-inch diameter 30-inch long galvanized iron post with 2½-ing diameter brass cap marked:



- From which the following references:
- A 6-inch diameter pine bears N 24° 39' E 22.08 feet distance. Scribed C ¼ S34 LS 1071 BT.
 - A 6-inch diameter fir bears S 12° 28' E 2.00 feet distance. Scribed C ¼ S34 LS 1071 BT.

Center west one sixteenth corner Section 34, Township 35 South, Range 3 East, Willamette Meridian.

At the corner point I found a standard BLM monument marked:

U. S. Dept. of Interior
Unlawful to Disturb
W 1/16 S34
1977
Cadastral Surveys
Bureau of Land Management

From which the following references:

A 9-inch diameter fir bears N 37° 00' E 29.37 feet distance. Scribed X BT.

A 8-inch diameter fir bears N 23° 30' E 6.20 feet distance. Partial healed blaze.

Standard corner of Section 34, Township 34 South, Range 3 East, and Section 3, Township 36 South, Range 3 East, Willamette Meridian. This corner functions as an angle point on the 8th standard parallel.

At the corner point I found a standard BLM monument marked:

U. S. Dept. of Interior
Unlawful to Disturb
A. P.
T35S R3E
S34
S3
T36S
1977
Cadastral Surveys
Bureau of Land Management

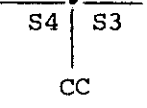
From which the following references:

A 6-inch diameter fir bears N 25° 15' E 16.50 feet distance. Healed scar.

A 8-inch diameter fir bears S 59° 00' W 12.21 feet distance. Healed scar.

Closing section corner to Sections 3 and 4, Township 36 South, Range 3 East, Willamette Meridian.

At the corner point I found a standard Jackson County Surveyors monument marked:

Jackson County Surveyor
T35S

T36S R3E
1975

From which the following references:

A 40-inch diameter fir stump bears S 10° 00' E 12.00 feet distance. Scribe visible.

At the corner point I found a standard BLM monument marked:

U. S. Dept. of Interior
 Unlawful to Disturb
 W. P.
 T35S R3E
S35
 S2
 T36S
 1977
 Cadastral Surveys
 Bureau of Land Management

From which the following references:

A 17-inch diameter fir bears N 82° 05' W 11.80 feet distance. Double healed blaze.

A 12-inch diameter fir bears N 11° 19' W 60.00 feet distance. Double healed blaze.

A 20-inch diameter fir bears S 26° 09' E 50.40 feet distance. Double healed blaze.

Witness Point No. 2 on the west side of Willow Creek Reservoir established by Surveyor C. Z. Boyden and reestablished by the BLM in 1977.

At the corner point I found a standard BLM monument marked:

U. S. Dept. of Interior
 Unlawful to Disturb
 W. P.
 T35S R3E
S34
 S3
 T36S
 1977
 Cadastral Surveys
 Bureau of Land Management

From which the following references:

A 7-inch diameter fir bears N 17° 20' E 46.30 feet distance. Partial healed blaze.

A 7-inch diameter fir bears S 32° 28' E 25.80 feet distance. Partial healed blaze.

Note - This corner falls in a flat area above Willow Lake Resort. The area is used for winter storage of boats. The corner monument is 6-8 inches below ground surface. Axed faces on witness trees marked by the BLM in 1977 do not face to monument.

West one sixteenth corner to Section 34, Township 35 South, Range 3 East, Willamette Meridian.

From which the following references:

- A 13-inch diameter fir bears S 42° 49' E 23.00 feet distance. Scribe visible.
- A 14-inch diameter fir bears N 58° 58' W 3.00 feet distance. Scribe visible.

One quarter corner common to Sections 34 and 35, Township 35 South, Range 3 East, Willamette Meridian.

At the corner point I found a standard BLM monument marked:

U. S. Dept. of Interior
Unlawful to Disturb
T35S R3E

1/4
S34 | S35
1966
Cadastral Surveys
Bureau of Land Management

From which the following references:

- A 10-inch diameter fir bears N 83° 21' W 8.80 feet distance. Healed blaze.
- A 16-inch diameter fir bears S 60° 27' E 50.70 feet distance. Healed blaze.

South one sixteenth corner common to Sections 34 and 35, Township 35 South, Range 3 East, Willamette Meridian.

At the corner point I found a standard BLM monument marked:

U. S. Dept. of Interior
Unlawful to Disturb
T35S R3E

S 1/16
S34 | S35
1977
Cadastral Surveys
Bureau of Land Management

From which the following references:

- A 15-inch diameter fir bears N 59° 46' W 40.90 feet distance. Scribe visible.
- A 8-inch diameter fir bears N 70° 29' E 26.20 feet distance. Scribe visible.

Witness Point No. 1 on east side of Willow Creek Reservoir established by Surveyor C.Z. Boyden and remonumented by the BLM in 1977.

At the corner point I found a standard BLM monument marked:

U. S. Dept. of Interior
Unlawful to Disturb
T35S R3E

1/4 S27
 S34

1977
Cadastral Surveys
Bureau of Land Management

From which the following references:

- A 19-inch diameter pine bears N 12° 12' E 77.80 feet distance. Scribe visible.
- A 7-inch diameter pine bears S 13° 34' E 15.10 feet distance. Scribe visible.

Section corner common to Sections 26, 27, 34 and 35, Township 35 South, Range 3 East, Willamette Meridian.

At the corner point I found a standard BLM monument marked:

U. S. Dept. of Interior
Unlawful to Disturb
T35S R3E

S27 S26

S34 S35

1966
Cadastral Surveys
Bureau of Land Management

From which the following references:

- A 22-inch diameter fir bears N 88° 18' W 23.40 feet distance. Single healed blaze.
- A 12-inch diameter fir bears S 81° 53' W 35.50 feet distance. Single healed blaze.
- A 11-inch diameter fir bears N 42° 09' W 47.30 feet distance. Single healed blaze.
- A 20-inch diameter pine bears N 12° 13' W 29.50 feet distance. Single healed blaze.
- A 17-inch diameter fir bears S 51° 37' E 24.90 feet distance. Single healed blaze.

North one sixteenth corner common to Sections 34 and 35, Township 35 South, Range 3 East, Willamette Meridian.

At the corner point I found a standard BLM monument marked:

U. S. Dept. of Interior
Unlawful to Disturb
T35S R3E

N 1/16
S34 S35

1977
Cadastral Surveys
Bureau of Land Management

SURVEY NARRATIVE TO COMPLY WITH
PARAGRAPH 209.250 OREGON REVISED STATUTES

SURVEY FOR: Rogue River National Forest
 P. O. Box 520
 Medford, Oregon 97501

 and

 Medford Water Commission
 Medford City hall - Room 286
 Medford, Oregon 97501

LOCATION: Section 34, Township 35 South, Range 3 East,
 Willamette Meridian, Jackson County, Oregon.

BASIS OF BEARING: Solar observation

PURPOSE: To monument interior property corners and mark and
 post mutual property lines separating private and
 National Forest lands.

PROCEDURE: Began this survey at the southwest corner Section
 34 and ran a closed traverse around the perimeter
 of said section tying controlling corners necessary
 for the subdivision of said section. A random tra-
 verse was then ran along the interior lines closing
 to the previously ran perimeter traverse. From
 this data corners were established and lines were
 posted as shown on the attached map of survey.

 This survey performed using a Wild T-16 Theodolite
 and Hewlett-Packard 3805-A Electronic Distance
 Meters.

Special Note

The 8th standard parallel south, Range 3 East, and several sections within Township 35 South, Range 3 East, were the subject of a 1978 BLM dependent resurvey. Several of the corners used for control within this survey were established during the 1978 BLM resurvey. Those corners are yet to be officially approved.

CORNERS ACCEPTED FOR CONTROL

The following corners were described within Record Survey No. 8180 and will not be redescribed within this narrative.

Section corner common to Sections 27, 28, 33 and 34, Township 35 South, Range 3 East, Willamette Meridian.

One quarter corner common to Sections 33 and 34, Township 35 South, Range 3 East, Willamette Meridian.

Section corner common to Sections 33 and 34, Township 35 South, Range 3 East, and Section 4, Township 36 South, Range 3 East, Willamette Meridian.

South one sixteenth corner common to Sections 33 and 34, Township 35 South, Range 3 East, Willamette Meridian.

Corners described this survey:

One quarter corner common to Sections 27 and 34, Township 35 South Range 3 East, Willamette Meridian.