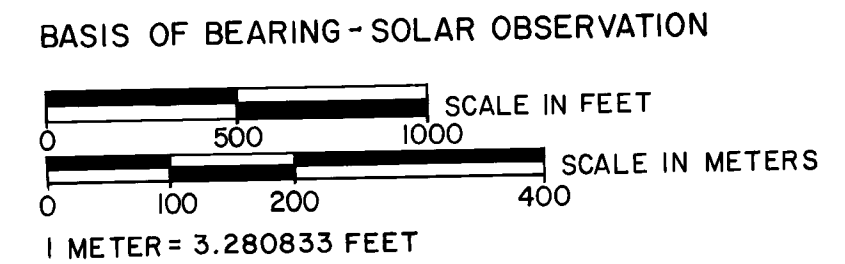


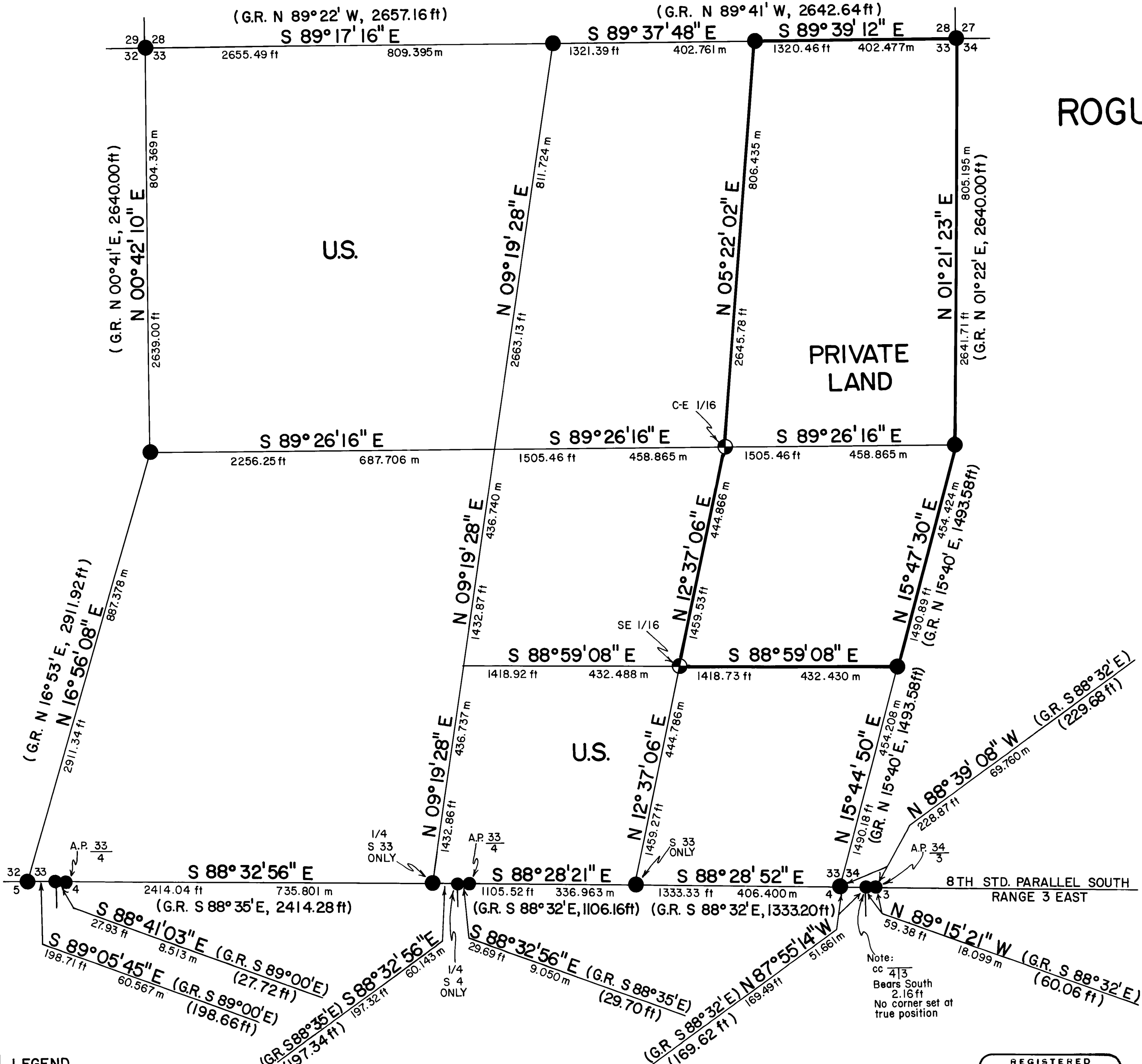
MAP OF SURVEY  
FOR  
ROGUE RIVER NATIONAL FOREST  
P.O. BOX 520  
MEDFORD, OREGON  
DECEMBER 10, 1979



HISTORY OF SURVEYS

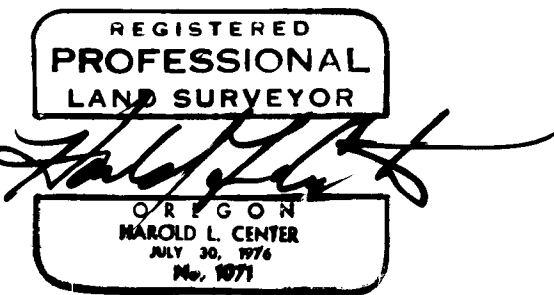
ESTABLISHMENT OF THE EIGHTH STANDARD PARALLEL SOUTH, RANGE 3 EAST, WAS PERFORMED BY DEPUTY SURVEYOR NATHANIEL FORD UNDER CONTRACT NO. 58 DATED APRIL 18TH, 1855.  
SUBDIVISIONS OF TOWNSHIP 35 SOUTH, RANGE 3 EAST, WERE PERFORMED BY DEPUTY SURVEYOR NATHANIEL FORD UNDER CONTRACT NO. 58 DATED APRIL 18, 1855.  
THE SOUTH BOUNDARY OF SECTION 33 WAS RESURVEYED BY RUFUS S. MOORE UNDER CONTRACT NO. 475 DATED JULY 3, 1883.  
A DEPENDENT RESURVEY OF THE EIGHTH STANDARD PARALLEL SOUTH, RANGE 3 EAST, AND PORTIONS OF TOWNSHIP 35 SOUTH, RANGE 3 EAST, WAS PERFORMED BY CADASTRAL SURVEYOR RONALD SHIRLER OF THE BUREAU OF LAND MANAGEMENT'S WESTERN FIELD OFFICE DURING 1977 AND 1978, WITH THE RESULTS OF THAT SURVEY YET TO BE OFFICIALLY APPROVED.

U.S. DEPARTMENT OF AGRICULTURE <b>FOREST SERVICE</b>	
REGION 6	ROGUE RIVER NAT. FOREST
DEPENDENT RESURVEY and SECTION SUBDIVISION SEC. 33, T. 35 S., R. 3 E., W.M. JACKSON COUNTY, OREGON	
REVIEWED BY <i>R. McDonald</i>	DATE <i>1/2/1980</i>
REVIEWED BY <i>R.J. Hathaway</i>	DATE <i>1/8/80</i>



- LEGEND**
- FOUND STANDARD BLM OR COUNTY SURVEYOR MONUMENT.
  - ⊙ SET 2 1/2" DIA. BY 30" LG. IRON POST WITH 2 1/2" DIA. BRASS CAP UNLESS OTHERWISE NOTED.
  - PROPERTY LINE ESTABLISHED AND POSTED THIS SURVEY.
  - - - SECTION LINE CALCULATED FROM TRAVERSE SURVEY.
  - G.R. GOVERNMENT RECORD (G.R. SHOWN IS 1978 BLM RETRACEMENT).
  - A.P. ANGLE POINT

**CERTIFICATE OF SURVEY**  
I, HAROLD L. CENTER, REGISTRATION NO. 1071 REGISTERED PROFESSIONAL LAND SURVEYOR, STATE OF OREGON, HEREBY CERTIFY THAT THIS MAP CORRECTLY REPRESENTS A SURVEY MADE BY ME OR UNDER MY DIRECTION IN CONFORMANCE WITH THE LAWS OF THE STATE OF OREGON, AT THE REQUEST OF THE U.S. FOREST SERVICE.





From which the following references:

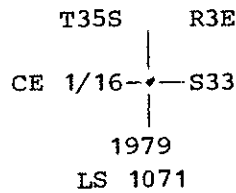
A 9 inch diameter fir bears S 02° 00' W 50.10 feet distant.

A 10 inch diameter fir bears N 28° 00' W 21.80 feet distant.

CORNER ESTABLISHED THIS SURVEY

Center east one sixteenth corner Section 33, Township 35 South, Range 3 East.

At the corner point I set a 2½ inch diameter galvanized iron post with a 2½ inch diameter brass cap monument marked:



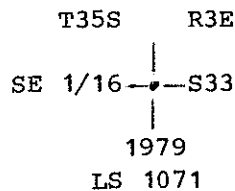
From which the following references:

A 13 inch diameter Douglas-fir bears S 73° 44' W 25.50 feet distance.  
Scribed CE 1/16 S33 LS 1071 BT.

A 12 inch diameter sugar pine bears N 00° 45' W 25.30 feet distance.  
Scribed CE 1/16 S33 LS 1071 BT.

Southeast one sixteenth corner Section 33, Township 35 South, Range 3 East.

At the corner point I set a 2½ inch diameter galvanized iron post with a 2½ inch diameter brass cap monument marked:



From which the following references:

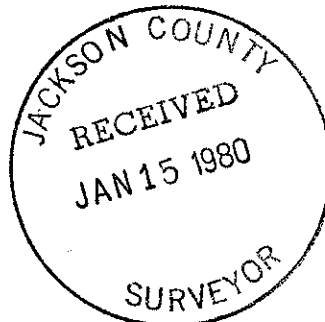
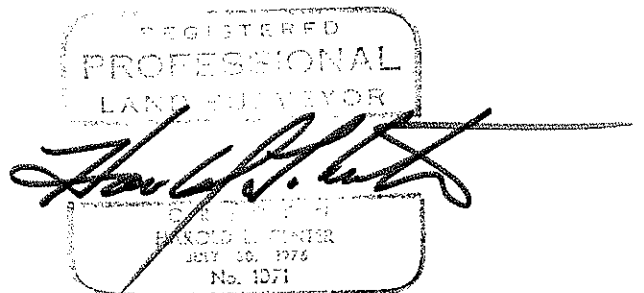
A 24 inch diameter ponderosa pine bears S 04° 06' E 26.20 feet distance.  
Scribed SE 1/16 S33 LS 1071 BT.

A 6 inch diameter Douglas-fir bears S 66° 44' W 35.00 feet distance.  
Scribed SE 1/16 S33 LS 1071 BT.

This survey performed using Wild T-16 Theodolites and Hewlett-Packard 3805 electronic distance meters.

December 10, 1979

HAROLD L. CENTER  
Registered Professional Land Surveyor  
Oregon Certificate No. 1071



From which the following references:

A 7 inch diameter fir bears S 09° 52' E 17.52 feet distance. Scribe visible.

A 10 inch diameter fir bears S 64° 00' W 28.40 feet distance. Scribe visible.

A 10 inch diameter fir bears N 58° 00' W 27.50 feet distance. Scribe visible.

A 14 inch diameter fir bears N 00° 20' E 63.30 feet distance. Scribe visible.

A dead and down fir, size indeterminate, bears N 44° 30' W 17.20 feet distance to center of stump hole.

A 9 inch diameter fir bears S 11° 15' E 18.40 feet distance.

One quarter section corner common to Sections 28 and 33, Township 35 South, Range 3 East.

At the corner point I found a standard Bureau of Land Management monument marked:

U. S. Dept. of Interior  
Unlawful to disturb

$\frac{1}{4}$   $\frac{S28}{S33}$

1966  
Cadastral Surveys  
Bureau of Land Management

From which the following references:

A 15 inch diameter fir bears N 49° 58' E 37.40 feet distance. Healed scar.

A 40 inch diameter fir bears N 46° 04' W 5.60 feet distance. Healed scar.

A 23 inch diameter fir bears S 69° 05' W 7.80 feet distance. Scribe 4 visible in opened face.

A 14 inch diameter fir (now dead) bears S 28° 13' W 31.10 feet distance. Scribe visible.

East one sixteenth corner common to Sections 28 and 33, Township 35 South, Range 3 East.

At the corner point I found a standard Bureau of Land Management monument marked:

U. S. Dept. of Interior  
Unlawful to Disturb

T35S R3E

E  $\frac{1}{16}$   $\frac{S28}{S33}$

1977  
Cadastral Survey  
Bureau of Land Management

At the corner point I found a standard Bureau of Land Management monument marked:

U. S. Dept. of Interior  
 Unlawful to disturb  
 T35S R3E

S32		S33
S5		

1977  
 Cadastral Surveys  
 Bureau of Land Management

From which the following references:

A 18 inch diameter fir bears N 33° 26' W 49.71 feet distance.

A 15 inch diameter cedar bears N 35° 35' E 32.13 feet distance.

One quarter corner common to Sections 32 and 33, Township 35 South, Range 3 East.

At the corner point I found a standard Bureau of Land Management monument marked:

U. S. Dept. of Interior  
 Unlawful to disturb  
 T35S R3E

	1/4	
S32	•	S33
1978		

Cadastral Surveys  
 Bureau of Land Management

From which the following references:

A 10 inch diameter fir bears S 61° 40' W 36.00 feet distance. Scribe 1/4 S32 BT visible.

A 10 inch diameter fir bears S 61° 50' E 27.97 feet distance. Scribe 1/4 S33 BT visible.

Section corner common to Sections 28, 29, 32 and 33, Township 35 South, Range 3 East.

At the corner point I found a standard Bureau of Land Management monument marked:

U. S. Dept. of Interior  
 Unlawful to disturb  
 T35S R3E

S29		S28
S32		
S32		S33

1977  
 Cadastral Surveys  
 Bureau of Land Management

From which the following references:

A 8 inch diameter fir bears N 31° 46' E 35.20 feet distance. Scribed 1/4 S33 BT.

A 8 inch diameter fir bears N 25° 03' E 44.90 feet distance. Scribed X BT.

Angle point common to Section 33, Township 35 South, Range 3 East, and Section 4, Township 36 South, Range 3 East.

At the corner point I found a standard Bureau of Land Management monument marked:

U. S. Dept. of Interior  
 Unlawful to disturb  
 A.P.  
 T35S R3E  
  
 S33  
 ————  
 S 4  
  
 T36S  
  
 1977  
 Cadastral Surveys

From which the following references:

A fir stub size undeterminate bears S 22° 25' E 21.17 feet distance.

A 15 inch diameter cedar bears N 58° 25' W 34.38 feet distance.

A 12 inch diameter fir bears S 22° 25' E 21.17 feet distance.

Closing section corner common to Sections 4 and 5, Township 36 South, Range 3 East.

At the corner point I found a standard Jackson County Surveyor brass cap monument marked:

T35S  
 Clos. Cor.  
 ————  
 S5 | S4  
 T36S R3E  
 C.S.  
 1973

From which the following references:

A 12 inch diameter fir bears S 34° 28' W 38.33 feet distance.

A fir stub size indeterminate in bears S 17° 21' W 42.77 feet distance.

A 14 inch diameter fir bears S 06° 39' E 75.12 feet distance.

Section corner common to Sections 32 and 33, Township 35 South, Range 3 East, and Section 5, Township 36 South, Range 3 East.

At the corner point I found a standard Bureau of Land Management monument marked:

U. S. Dept. of Interior  
Unlawful to disturb  
A.P.  
T35S R3E

S33

S 4

T36S

1978  
Cadastral Surveys  
Bureau of Land Mangement

From which the following references:

A 24 inch diameter fir bears N 72° 46' E 5.70 feet distance. Scribe visible on an opened face.

A 13 inch diameter cedar bears N 37° 13' E 13.94 feet distance. Scribe CS BT visible.

A 6 inch diameter cedar bears S 57° 18' W 22.51 feet distance. Scribe CS BT visible.

One quarter corner common to Section 4, Township 36 South, Range 3 East.

At the corner point I found a standard Bureau of Land Mangement monument marked:

U. S. Dept. of Interior  
Unlawful to disturb

1/4 S4

T36S R3E

1978  
Cadastral Surveys  
Bureau of Land Mangement

From which the following reference:

A 7 inch diameter cedar bears S 19° 54' W 13.40 feet distance. Scribed 1/4 S4 BT.

One quarter corner common to Section 33, Township 35 South, Range 3 East.

At the corner point I found a standard Bureau of Land Mangement monument marked:

U. S. Dept. of Interior  
Unlawful to disturb  
T35S R3E

1/4 S33

1977

Cadastral Surveys  
Bureau of Land Management

A 14 inch diameter fir bears N 38° 56' W 33.75 feet distance. Scribe S 1/16 S33 BT visible. Blaze faces improperly to northeast.

Section corner common to Sections 33 and 34, Township 35 South, Range 3 East and Section 4, Township 36 South, Range 3 East only.

At the corner position I found a standard Bureau of Land Management monument marked:

U. S. Dept. of Interior  
Unlawful to disturb  
T35S R3E  

S33	S34
-----	-----

  
S4  
  
1977  
Cadastral Surveys  
Bureau of Land Management

From which the following references:

A 9 inch diameter pine bears N 19° 24' E 53.10 feet distance.

A 20 inch diameter fir bears N 53° 26' W 64.0 feet distance.

East one sixteenth corner Section 33 only, Township 35 South, Range 3 East.

At the corner point I found a standard Bureau of Land Management monument marked:

U. S. Dept. of Interior  
Unlawful to disturb  
T35S R3E  
  
E 1/16 S33  
  
1977  
Cadastral Surveys  
Bureau of Land Management

From which the following references:

A 5 inch diameter fir bears N 67° 30' E 13.45 feet distance. X BT scribe visible.

A 7 inch diameter fir bears N 63° 00' E 30.03 feet distance. Scribe visible.

Angle point common to Section 33, Township 35 South, Range 3 East, and Section 4, Township 36 South, Range 3 East.



From which the following references:

A 25 inch diameter fir bears N 45° 53' W 35.20 feet distance, healed blaze.

A 22 inch diameter fir bears N 07° 05' E 10.60 feet distance, healed blaze.

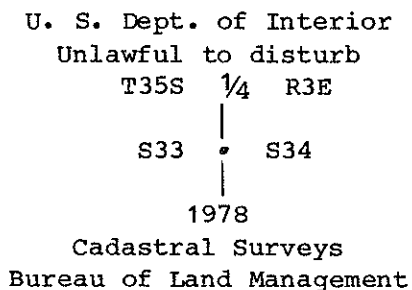
A 15 inch diameter fir bears S 76° 22' E 21.60 feet distance, healed blaze.

A 26 inch diameter fir bears S 48° 10' E 31.40 feet distance, healed blaze.

A 20 inch diameter fir bears S 13° 24' W 44.90 feet distance, healed blaze.

One quarter corner common to Sections 33 and 34, Township 35 South, Range 3 East.

At the corner point I found a standard Bureau of Land Management monument marked:

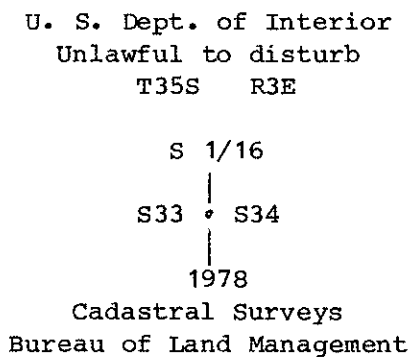


From which the following reference:

A fir 10 inches in diameter bears S 38° 00' E 34.60 feet distance. Partially healed blaze.

South one sixteenth corner common to Sections 33 and 34, Township 35 South, Range 3 East.

At the corner point I found a standard Bureau of Land Management monument marked:



From which the references:

A 12 inch diameter fir bears N 21° 54' E 50.81 feet distance. Scribe visible.

SURVEY NARRATIVE TO COMPLY WITH  
PARAGRAPH 209.250 OREGON REVISED STATUTES

SURVEY FOR: Rogue River National Forest  
P. O. Box 520  
Medford, Oregon 97501

LOCATION: Section 33, Township 35 South, Range 3 East, Willamette  
Meridian, Jackson County, Oregon.

BASIS OF BEARING: Solar Observation

PURPOSE: To establish interior property corners and mark and post  
mutual property lines separating National Forest lands  
and private lands.

PROCEDURE: A closed traverse was run around the exterior of Section  
33, tying all controlling section corners. This survey  
was performed to verify the position of corners  
established during a Bureau of Land Management dependent  
resurvey of the 8th Standard Parallel South, Range 3  
East, and portions of Township 35 South, Range 3 East.  
Controlling corners were found to be established within  
BLM manual standards and were accepted in the positions  
found. The procedure used by the BLM to reestablish the  
east and west one quarter corners, creates a strong  
southwesterly bearing from the one quarter corners  
southerly to the controlling corner situated along the  
8th Standard Parallel. Prior to subdivision of this  
section, an opinion was obtained from the BLM Western  
Field Office as to the correct procedure to be followed  
in subdivision of said section. A copy of said letter  
is attached and made a part of this narrative.

I followed BLM instructions and proceeded to subdivide  
the section as shown on the attached map of survey.

At the date of this survey several corners used as  
control for this survey are unofficial and this survey  
is subject to any discrepancies or changes which may  
occur prior to these corners becoming official.

CORNERS ACCEPTED FOR CONTROL

Note all exterior section, quarter section, and angle points are described  
within this narrative although not all would normally be required to  
separate National Forest and private lands within Section 33.

Section corner common to Sections 27, 28, 33 and 34, Township 35 South,  
Range 3 East.

At the corner point I found a standard Bureau of Land Management monument  
marked:

U. S. Dept. of Interior  
Unlawful to disturb  
T35S R3E

S28	S27
S33	S34

1962  
Cadastral Surveys  
Bureau of Land Management