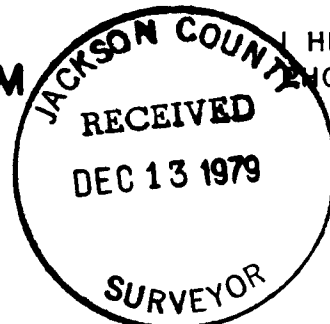


GARNET SUBDIVISION
 LOCATED IN THE N.E. 1/4 OF SECTION 20, T. 37S., R. 1W., W. M.
 MEDFORD, OREGON



HEREBY CERTIFY THAT THIS IS A PHOTOCOPY OF THE ORIGINAL PLAT

San O. Kaiser
 SURVEYOR

CURVE DATA

- | | | | | | | | | | | | | | | | | | | | | | | | | | | | | | | | | | | | | | | | | | | | | | | | | | |
|--|--|--|--|--|--|--|--|--|--|--|--|--|--|--|--|--|--|--|--|--|--|--|--|--|--|--|--|--|--|--|--|--|--|--|--|--|--|--|--|--|--|--|--|--|--|--|--|--|--|
| ① Δ = 27°15'53"
L = 35.689'
R = 75.00' | ② Δ = 27°15'53"
L = 35.689'
R = 75.00' | ③ Δ = 27°15'53"
L = 35.689'
R = 75.00' | ④ Δ = 27°15'53"
L = 35.689'
R = 75.00' | ⑤ Δ = 27°15'53"
L = 35.689'
R = 75.00' | ⑥ Δ = 27°15'53"
L = 35.689'
R = 75.00' | ⑦ Δ = 27°15'53"
L = 35.689'
R = 75.00' | ⑧ Δ = 27°15'53"
L = 35.689'
R = 75.00' | ⑨ Δ = 27°15'53"
L = 35.689'
R = 75.00' | ⑩ Δ = 27°15'53"
L = 35.689'
R = 75.00' | ⑪ Δ = 27°15'53"
L = 35.689'
R = 75.00' | ⑫ Δ = 27°15'53"
L = 35.689'
R = 75.00' | ⑬ Δ = 27°15'53"
L = 35.689'
R = 75.00' | ⑭ Δ = 27°15'53"
L = 35.689'
R = 75.00' | ⑮ Δ = 27°15'53"
L = 35.689'
R = 75.00' | ⑯ Δ = 27°15'53"
L = 35.689'
R = 75.00' | ⑰ Δ = 27°15'53"
L = 35.689'
R = 75.00' | ⑱ Δ = 27°15'53"
L = 35.689'
R = 75.00' | ⑲ Δ = 27°15'53"
L = 35.689'
R = 75.00' | ⑳ Δ = 27°15'53"
L = 35.689'
R = 75.00' | ㉑ Δ = 27°15'53"
L = 35.689'
R = 75.00' | ㉒ Δ = 27°15'53"
L = 35.689'
R = 75.00' | ㉓ Δ = 27°15'53"
L = 35.689'
R = 75.00' | ㉔ Δ = 27°15'53"
L = 35.689'
R = 75.00' | ㉕ Δ = 27°15'53"
L = 35.689'
R = 75.00' | ㉖ Δ = 27°15'53"
L = 35.689'
R = 75.00' | ㉗ Δ = 27°15'53"
L = 35.689'
R = 75.00' | ㉘ Δ = 27°15'53"
L = 35.689'
R = 75.00' | ㉙ Δ = 27°15'53"
L = 35.689'
R = 75.00' | ㉚ Δ = 27°15'53"
L = 35.689'
R = 75.00' | ㉛ Δ = 27°15'53"
L = 35.689'
R = 75.00' | ㉜ Δ = 27°15'53"
L = 35.689'
R = 75.00' | ㉝ Δ = 27°15'53"
L = 35.689'
R = 75.00' | ㉞ Δ = 27°15'53"
L = 35.689'
R = 75.00' | ㉟ Δ = 27°15'53"
L = 35.689'
R = 75.00' | ㊱ Δ = 27°15'53"
L = 35.689'
R = 75.00' | ㊲ Δ = 27°15'53"
L = 35.689'
R = 75.00' | ㊳ Δ = 27°15'53"
L = 35.689'
R = 75.00' | ㊴ Δ = 27°15'53"
L = 35.689'
R = 75.00' | ㊵ Δ = 27°15'53"
L = 35.689'
R = 75.00' | ㊶ Δ = 27°15'53"
L = 35.689'
R = 75.00' | ㊷ Δ = 27°15'53"
L = 35.689'
R = 75.00' | ㊸ Δ = 27°15'53"
L = 35.689'
R = 75.00' | ㊹ Δ = 27°15'53"
L = 35.689'
R = 75.00' | ㊺ Δ = 27°15'53"
L = 35.689'
R = 75.00' | ㊻ Δ = 27°15'53"
L = 35.689'
R = 75.00' | ㊼ Δ = 27°15'53"
L = 35.689'
R = 75.00' | ㊽ Δ = 27°15'53"
L = 35.689'
R = 75.00' | ㊾ Δ = 27°15'53"
L = 35.689'
R = 75.00' | ㊿ Δ = 27°15'53"
L = 35.689'
R = 75.00' |
|--|--|--|--|--|--|--|--|--|--|--|--|--|--|--|--|--|--|--|--|--|--|--|--|--|--|--|--|--|--|--|--|--|--|--|--|--|--|--|--|--|--|--|--|--|--|--|--|--|--|

SURVEYOR'S CERTIFICATE
 STATE OF OREGON SS
 COUNTY OF JACKSON

I, GARY D. KAISER, A DULY REGISTERED PROFESSIONAL LAND SURVEYOR OF THE STATE OF OREGON, BEING DULY SWORN, DO HEREBY CERTIFY THAT THE TRACT OF LAND HEREON SHOWN HAS BEEN CORRECTLY SURVEYED AND MARKED WITH THE PROPER MONUMENTS AS PROVIDED BY LAW, AND THAT THE FOLLOWING IS AN ACCURATE DESCRIPTION OF ITS BOUNDARY LINES:

Commencing at the North Quarter corner to Section 20, Township 37 South, Range 1 West of the Willamette Meridian in Jackson County, Oregon; thence South, 38.936 feet; thence East, 605.277 feet to an 8 inch diameter by 24 inch long concrete post with bronze disk set 6 inches below the ground surface located on the Westerly right-of-way line of Valley View Drive for the initial point of beginning; thence along said Drive line, South 0° 05' 34" East, 22.123 feet; thence along said Drive line, 35.689 feet on the arc of a 75.00-foot radius curve right (the long chord bears South 13° 32' 22" West, 35.353 feet) to a point of reverse curve; thence along said Drive line, 59.482 feet on the arc of a 125.00-foot radius curve left (the long chord bears South 13° 32' 22" West, 58.922 feet) to intersect the Westerly boundary of that tract described in Instrument No. 78-09377 of the Official Records of said County; thence along said tract boundary, South 0° 05' 34" East, 598.23 feet to the Southwest corner thereof; thence along the Southerly boundary of said tract, South 89° 54' 27" East, 291.615 feet; thence North, 560.00 feet to a point which bears South, 190.00 feet from the North boundary of said Section 20; thence North 89° 54' 27" West, 115.50 feet; thence South, 50.00 feet; thence North 89° 54' 27" West, 112.717 feet to the Easterly right-of-way line of said Valley View Drive; thence along said Drive line, 46.953 feet on the arc of a 75.00-foot radius curve right (the long chord bears North 18° 01' 40" West, 46.19 feet); thence along said Drive line, North 0° 05' 34" West, 44.49 feet; thence along said Drive line, 35.689 feet on the arc of a 75.00-foot radius curve right (the long chord bears North 13° 32' 22" East, 35.353 feet) to a point of reverse curve; thence along said Drive line, 59.482 feet on the arc of a 125.00-foot radius curve left (the long chord bears North 13° 32' 22" East, 58.922 feet); thence along said Drive line, North 0° 05' 34" West, 21.876 feet; thence along said Drive line, 20.462 feet on the arc of a 13.00-foot radius curve right (the long chord bears North 45° 00' East, 18.414 feet) to an intersection with the Southerly right-of-way line of Lone Pine Road; thence along said Road line, North 89° 54' 27" West, 76.00 feet to an intersection with the Westerly right-of-way line of said Valley View Drive; thence along said Drive line, 20.378 feet on the arc of a 13.00-foot radius curve right (the long chord bears South 45° 00' East, 18.355 feet) to the initial point of beginning.

San O. Kaiser
 SURVEYOR

SUBSCRIBED AND SWORN TO BEFORE ME THIS 8th DAY OF MAY, 1979.

San O. Kaiser

JERRY R. SWANSON
 Notary Public - Oregon

NOTARY PUBLIC for the STATE of OREGON
 MY COMMISSION EXPIRES THE 18 DAY OF July, 1979.

DECLARATION

KNOW ALL MEN BY THESE PRESENTS, THAT WE, LLOYD D. TYLER AND ROBERT FREDINBURG, PARTNERS, DO HEREBY MAKE, ESTABLISH AND DECLARE THE ATTACHED MAP TO BE A TRUE AND CORRECT MAP OF THE LAND OWNED AND LAID OUT BY US AS "GARNET SUBDIVISION", SAID LAND BEING MORE PARTICULARLY DESCRIBED IN THE SURVEYOR'S CERTIFICATE SHOWN HEREON. WE HEREBY GRANT TO THE CITY OF MEDFORD, OREGON, IN FEE SIMPLE, THAT AREA DESIGNATED HEREON AS A STREET PLUG AND WE ALSO DEDICATE TO THE PUBLIC FOR PUBLIC USE, THE STREETS AND PUBLIC UTILITY EASEMENTS (P.U.E.) AS SHOWN HEREON.

Lloyd D. Tyler
 LLOYD D. TYLER

Robert Fredinburg
 ROBERT FREDINBURG.

ACKNOWLEDGEMENT

STATE OF OREGON SS
 COUNTY OF JACKSON

THIS CERTIFIES THAT ON THE 8th DAY OF June, 1979, BEFORE ME, A NOTARY PUBLIC IN AND FOR SAID STATE AND COUNTY, PERSONALLY APPEARED LLOYD D. TYLER AND ROBERT FREDINBURG, PARTNERS, WHO FIRST BEING DULY SWORN, ACKNOWLEDGED THE FOREGOING INSTRUMENT TO BE THEIR VOLUNTARY ACT AND DEED.

JERRY R. SWANSON
 Notary Public - Oregon
 MY COMMISSION EXPIRES 7-8-79

NOTARY PUBLIC for the STATE of OREGON
 MY COMMISSION EXPIRES THE 27th DAY OF July, 1979.

APPROVALS

EXAMINED AND APPROVED BY THE MEDFORD IRRIGATION DISTRICT IN REGULAR SESSION THIS 7th DAY OF August, 1979.

Richard Payne
 PRESIDENT

Carla J. Lemery
 SECRETARY

EXAMINED AND APPROVED THIS 8th DAY OF November, 1979.

Donald C. Walk
 CITY ENGINEER

WE CERTIFY PURSUANT TO AUTHORITY GRANTED TO US BY THE MEDFORD PLANNING COMMISSION IN OPEN MEETING OF _____, 1979 THE ABOVE PLAT IS HEREBY APPROVED BY THE MEDFORD PLANNING COMMISSION.

DATE Nov 8, 1979
James E. Frawland
 PRESIDENT

James M. Eisenbaum
 SECRETARY

I HEREBY CERTIFY THAT ALL AD VALOREM TAXES AND ALL SPECIAL ASSESSMENTS, FEES AND OTHER CHARGES REQUIRED BY LAW WHICH WILL BECOME A LIEN DURING THE 1979 CALENDAR YEAR HAVE BEEN PAID.

DATE 11-16-79

Ray Stewart
 DIRECTOR OF ASSESSMENT AND TAXATION

FILED FOR RECORD THIS THE 13 DAY OF December, 1979, AT 11:30 O'CLOCK A.M. AND RECORDED IN VOLUME 14 OF PLATS AT PAGE 10 OF RECORDS OF JACKSON COUNTY, OREGON.

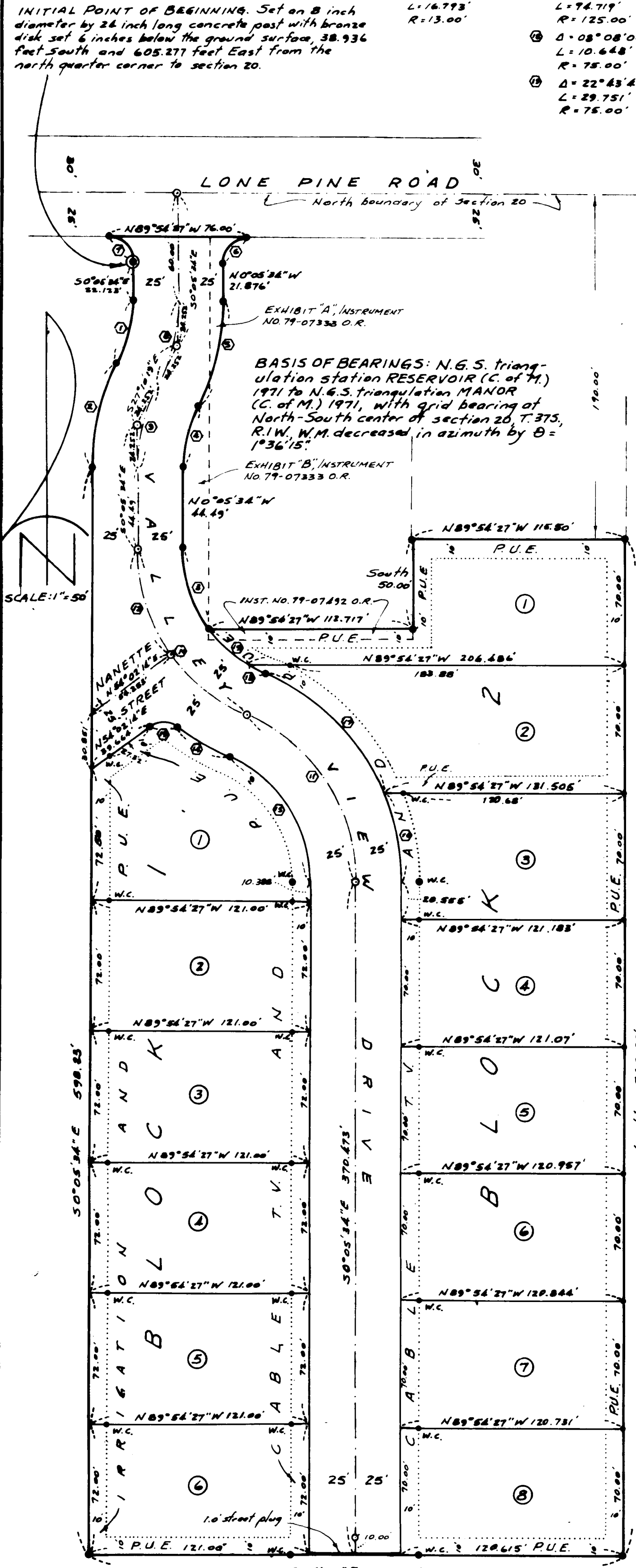
BY *Mark Cole*
 DEPUTY

William J. Long
 COUNTY CLERK

FOR ORDER OF THE BOARD OF COUNTY COMMISSIONERS APPROVING THIS PLAT SEE VOLUME 109, PAGE 364 OF THE COUNTY COMMISSIONERS' JOURNAL OF PROCEEDINGS.

BY *Mark Cole*
 DEPUTY

William J. Long
 COUNTY CLERK



POST MONUMENTATION CERTIFICATE
 ALL MONUMENTS WILL BE SET ON OR BEFORE THE 30th OF JUNE, 1980. ALL MONUMENTS ARE NOW SET, ON THIS 27th DAY OF June, 1980. SEE DOCUMENT NO. 80-11864 OF THE OFFICIAL RECORDS OF JACKSON COUNTY, OREGON.
 SURVEYOR *San O. Kaiser*

- Deferred monument
- Set 5/8" x 30" re-bar/plastic cap
- Set 5/8" x 24" re-bar/plastic cap
- P.U.E. - public utility easement
- W.C. - Witness corner

8131

8411

37 1W 20 N 8131 BR/64

Survey No. 8131

SURVEY NARRATIVE TO COMPLY WITH O.R.S. 209.250

FOR: Lloyd D. Tyler
and
Robert Fredinburg
c/o Tyler Real Estate
25 Hawthorne
Medford, Oregon

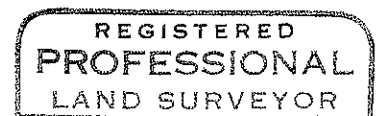
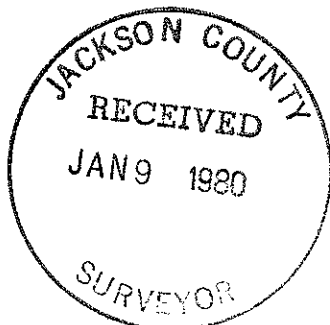
BY: Boyden Surveyors
26 Laurel Street
Medford, Oregon

PURPOSE: The purpose of this report is to be an accessory to GARNET SUBDIVISION (Recorded) located in Section 20, T37SR1W, W.M. It is felt that an explanation of procedures utilized in positioning the Easterly and Westerly boundaries is necessary.

PROCEDURE: The Southerly portion of the Westerly boundary of said subdivision was monumented parallel with and 583.00 feet Easterly at right angles from the North-South center line of said Section 20.
The most Easterly boundary was monumented along a line which is approximately 2 feet West of the record position of said boundary (see Instrument No. 78-09377 O.R.), leaving the existing fence entirely on the property to the East.

Basis of bearings is N.G.S. triangulation station RESERVOIR (C. of M.) 1971 to N.G.S. triangulation station MANOR (C. of M.) 1971, with grid bearings at the North-South center line of Section 20, T37SR1W, W.M. decreased in azimuth by $\theta = 1^{\circ}36'15''$.

January 4, 1980



Gary D. Kaiser

