

CLEARBROOK SUBDIVISION UNIT NO. 1

LOCATED IN THE S.E. 1/4 SECT. 17, T.37S., R.1W., W.M.

BEING WITHIN STEWART ACRES

CITY OF MEDFORD, JACKSON COUNTY, OREGON

POST MONUMENTATION MAP

OCTOBER 3, 1979

3:17

700

8115

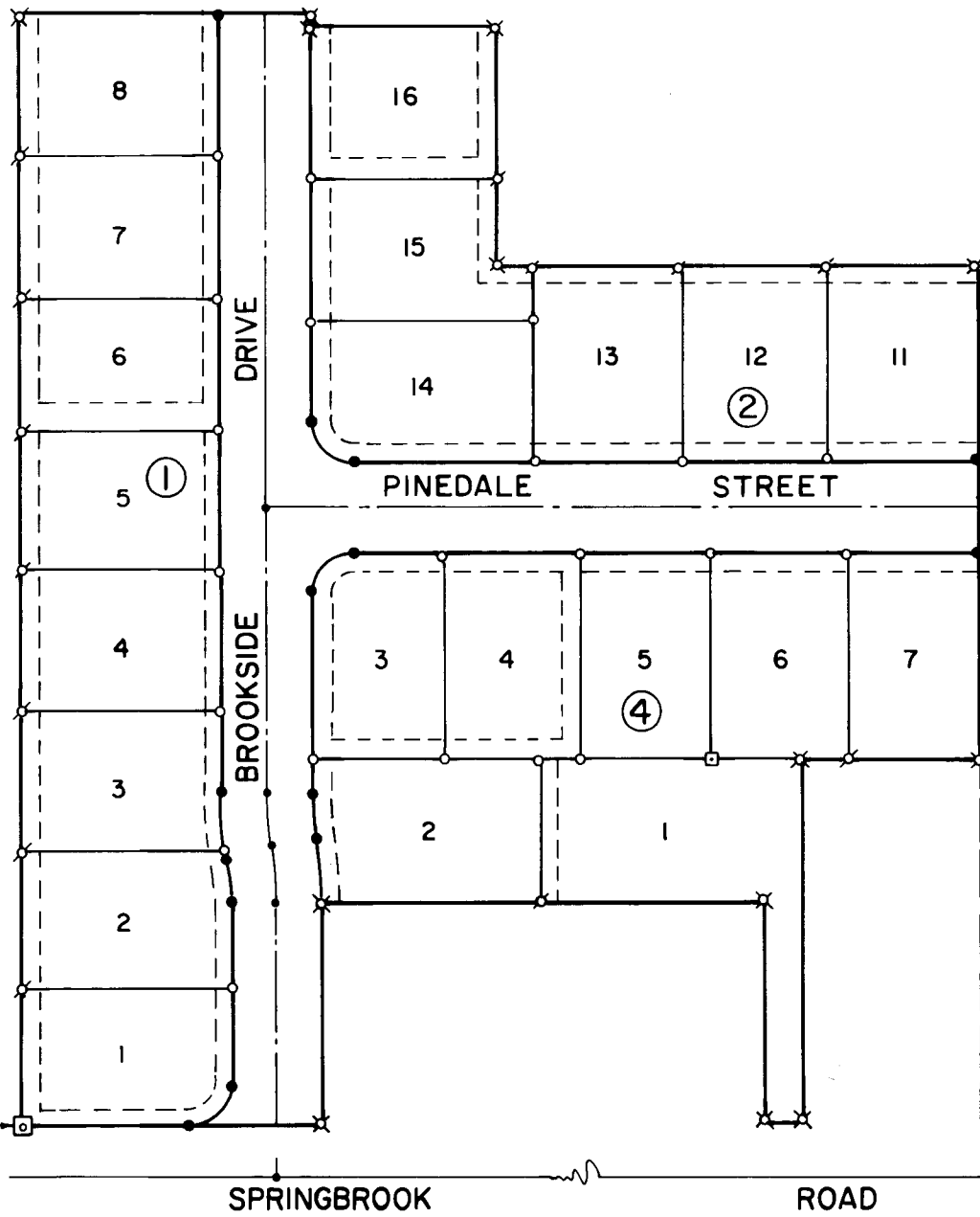
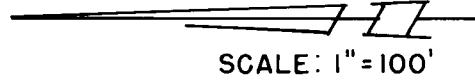
Examined and approved this
27th day of November
1979

Donald C. Walker
City Engineer

Filed for record this 30
day of November 1979
at 3:17 O'Clock PM. and
recorded in the official
records of Jackson County,
Oregon.

Waldene Terry
County Clerk

Joy A. Rameter
Deputy



79-26461

INITIAL POINT, Concrete
Monument with Metal
Disc. 1/4 cor. common to
Sect. 17 and 20 bears
South 1220.70 and
West 27.83

1/4 COR.
FD. BRASS CAP

I, Robert Joseph Milts, duly registered Land
Surveyor of the State of Oregon, do hereby
certify that this Map represents a survey
made by me or under my direction, and the
Monuments conform to O.R.S. 92.060.

Robert Joseph Milts

NOTE: See Plat of Clearbrook Subdivision
Unit No. 1 filed for record the 30th day of
August, 1979, at 11:57 O'Clock AM and
recorded in Volume 13 of Plats at page 92
of records of Jackson County, Oregon, for
lot bearings and distances.

LEGEND

- 5/8" x 24" Iron Pin Set Flush or to Point of Refusal
- 5/8" x 30" Iron Pin Set Flush or to Point of Refusal
- ⊕ 5/8" x 24" Iron Pin Set Per Original Plat
- ⊗ 5/8" x 30" Iron Pin Set Per Original Plat
- Street Monument (Brass Cap in Concrete)
- ⊙ Monument Found
- ⊠ Tack In Lead In Concrete Foundation

