

79-24505

# GLENMONT SUBDIVISION

LOCATED IN THE N.W. 1/4 OF SECTION 33, T. 37 S., R. 1 W., W. M.  
MEDFORD, OREGON

700  
4:45

79-24505

## POST MONUMENTATION MAP NOVEMBER 1, 1979

- Monuments per original subdivision plat
- Set 5/8" x 24" re-bar with plastic cap marked "BOYDEN RLS 281"
- ✱ Set 5/8" x 30" re-bar with plastic cap marked "BOYDEN RLS 281"
- ⊗ Set brass disk in concrete monument per City of Medford monument detail No. 77-1.
- Set 3/4" x 30" re-bar

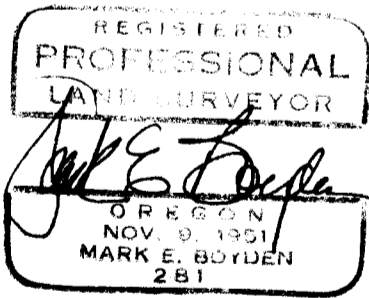
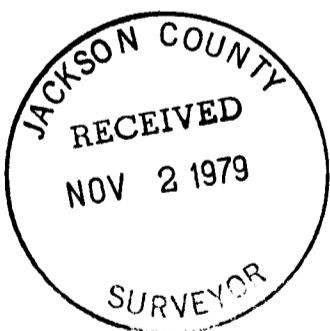
NOTE: See plat of GLENMONT SUBDIVISION filed for record the 7th day of February, 1979, at 4:14 o'clock P.M. and recorded in volume 13 of plats at page 73 of records of Jackson County, Oregon, for dimensions.

79-24505



79-24505

I, MARK E. BOYDEN, DULY REGISTERED SURVEYOR OF THE STATE OF OREGON, DO HEREBY CERTIFY THAT THIS MAP REPRESENTS A SURVEY MADE BY ME OR UNDER MY DIRECTION AND THE MONUMENTS CONFORM TO O.R.S. 92.060.



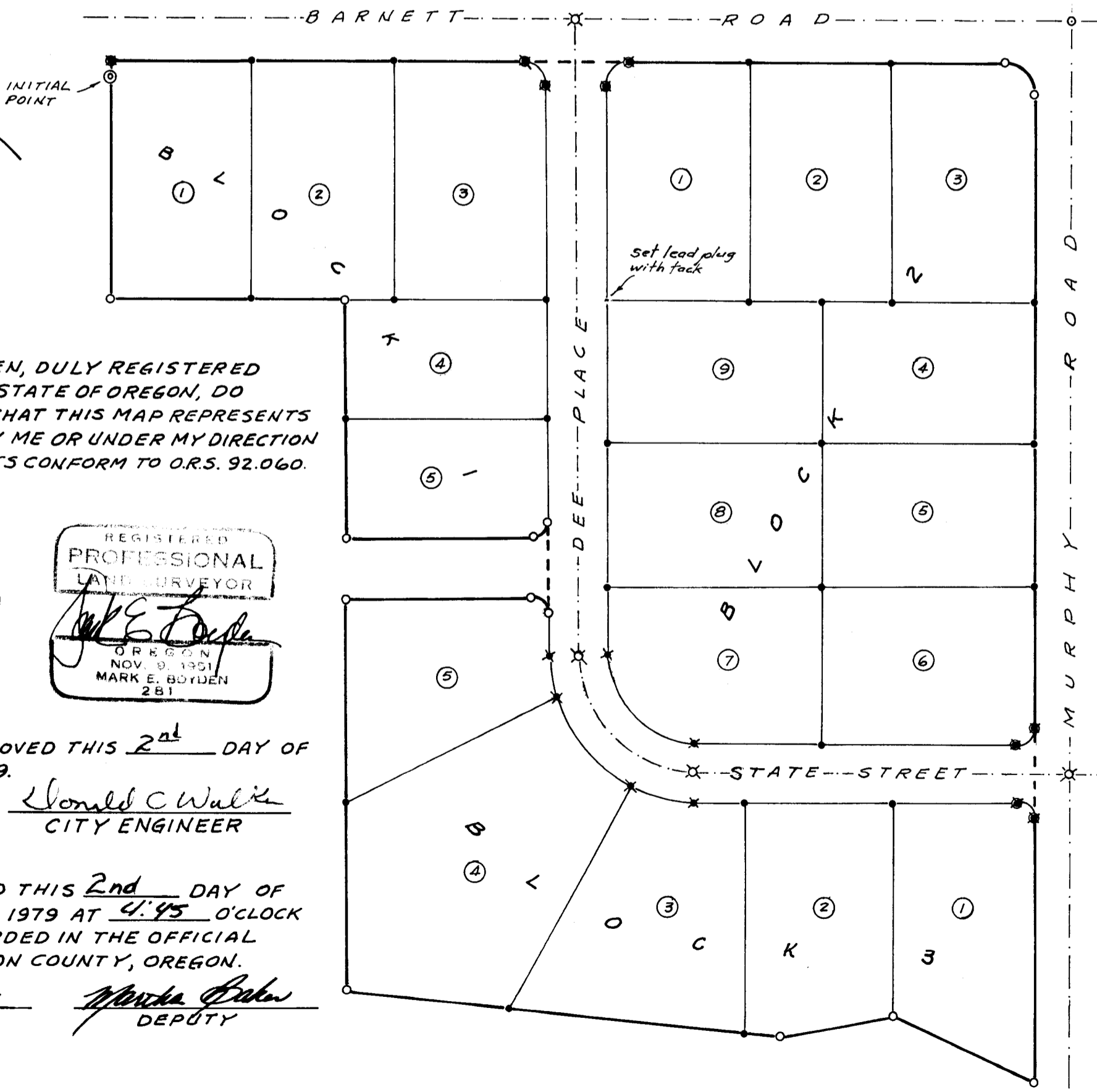
EXAMINED AND APPROVED THIS 2nd DAY OF November, 1979.

Donald C. Walker  
CITY ENGINEER

FILED FOR RECORD THIS 2nd DAY OF November, 1979 AT 4:45 O'CLOCK P. M. AND RECORDED IN THE OFFICIAL RECORDS OF JACKSON COUNTY, OREGON.

Waldene Terry  
COUNTY CLERK

Martha Baker  
DEPUTY



79-24505