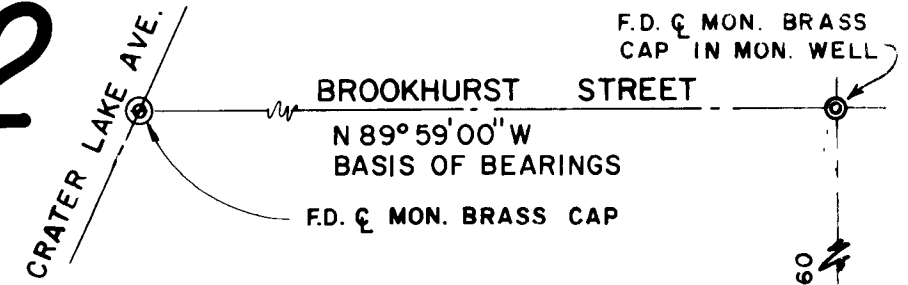


# CAMPUS SUBDIVISION UNIT NO. 2

LOCATED IN THE S.W. 1/4 OF SECTION 17, T. 37 S., R. 1 W., W.M. BEING WITHIN THE CITY OF MEDFORD, JACKSON COUNTY, OREGON



## DEDICATION

KNOW ALL MEN BY THESE PRESENTS, That we, Homesites Incorporated, an Oregon Corporation, are the owners in fee simple of the lands hereon described, and that we have subdivided the same into lots, block, and streets as shown hereon, and the number and size of the lots and the lengths of all lines are plainly set forth, and that this plat is a correct representation of the said subdivision, and we do hereby dedicate to the public for public use all streets and utility easements, shown hereon, and we do hereby designate said subdivision as, CAMPUS SUBDIVISION, UNIT NO. 2.

IN WITNESS WHEREOF, we have set our hands and seals this 5<sup>TH</sup> day of SEPT. 1979.

Homesites Incorporated: Clifford E. Lewis Secretary Roy P. Wilkes President

STATE OF OREGON )  
County of Jackson )  
SEPT. 5 A.D. 1979.

Personally appeared the above named Roy P. Wilkes, President and Clifford E. Lewis, Secretary of Homesites Incorporated, an Oregon Corporation, and acknowledged the foregoing instrument to be their voluntary act and deed.

Before me:

Charles A. Strom  
MAY 3, 1980

Medford Irrigation District, in regular session has examined and approved this plat on this 25<sup>th</sup> day of October, 1979.

William Payne President Carl H. King Secretary

I certify that pursuant to authority granted to us by the Medford Planning Commission in open meeting of October 11, 1979, the above plat is hereby approved by the Medford Planning Commission. Dated this 11 day of October, 1979.

Larry E. Ashland President James M. Eisenhart Secretary

Examined and approved this 11<sup>th</sup> day of October, 1979.

Leonard  
City Engineer

Examined and approved this 12 day of October, 1979.

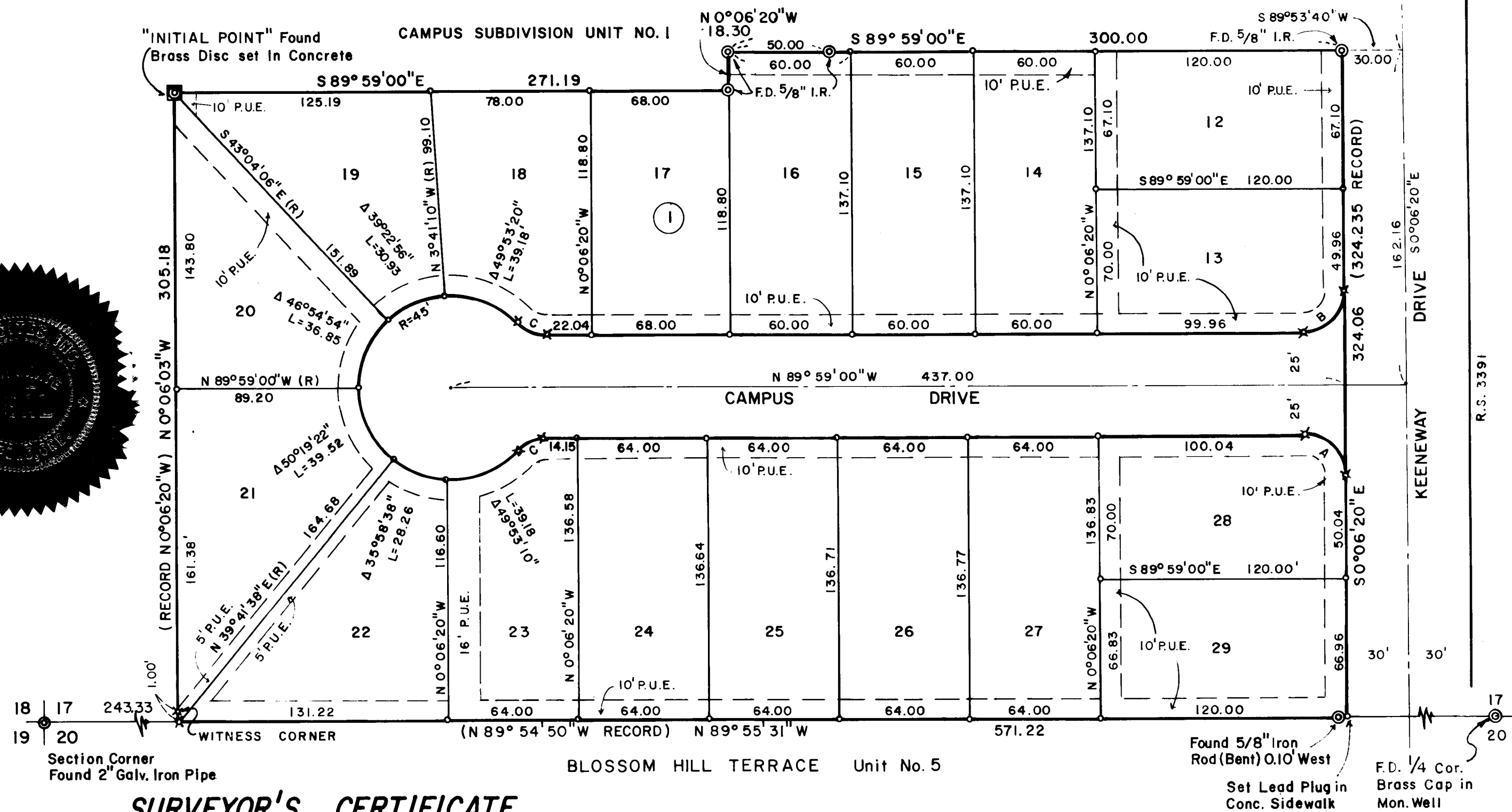
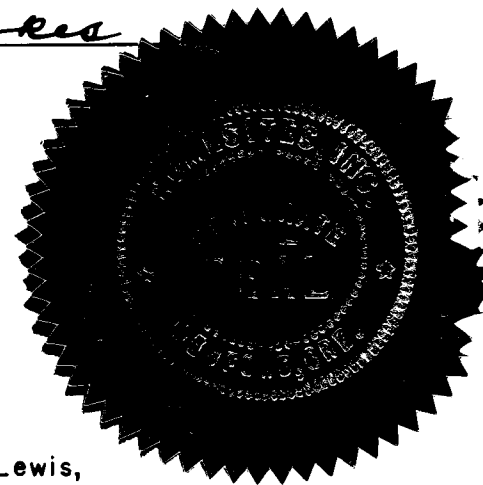
by Gene Gordon Deputy Ray Stewart Director of Assessment and Taxation

For order of the County Court approving this plat see Volume \_\_\_\_\_ page \_\_\_\_\_ of County Commissioner's Journal of Proceedings.

by Ruby A. Poling Deputy Haldene Terry County Clerk

Filed for record this 25<sup>th</sup> day of October 1979, at 11:30 o'clock A. and recorded in Volume 14 of Plats at Page 6 of Records of Jackson County, Oregon.

by Ruby A. Poling Deputy Haldene Terry County Clerk



## SURVEYOR'S CERTIFICATE

STATE OF OREGON )  
County of Jackson )

I, Robert Joseph Milts, a duly registered Surveyor of the State of Oregon, being first duly sworn, depose and say that this, CAMPUS SUBDIVISION, UNIT NO. 2 plat correctly represents a survey made under my direction and the following is an accurate description thereof:

Commencing at a 2-inch galvanized iron pipe common to Sections 17, 18, 19 and 20, Township 37 South, Range 1 West of the Willamette Meridian, Jackson County, Oregon; thence along the North line of Blossom Hill Terrace (recorded subdivision) South 89° 55' 31" East (Record S 89° 54' 50" E), 243.33 feet; thence North 00° 06' 03" West (Record N 00° 06' 20" W), 305.18 feet to a brass disc set in concrete, said brass disc being the Initial Point of Beginning; thence South 89° 59' 00" East, 271.19 feet; thence North 00° 06' 20" West, 18.30 feet; thence South 89° 59' 00" East 300.00 feet to the Westerly right of way line of Keeneway Drive; thence South 00° 06' 20" East along said right of way line, 324.06 feet (Record 324.235 feet) to the North line of said Blossom Hill Terrace; thence North 89° 55' 31" West (Record N 89° 54' 50" W), along said North line, 571.22 feet; thence North 00° 06' 03" West (Record N 00° 06' 20" W), 305.18 feet to the Initial Point of Beginning.

Robert Joseph Milts  
Surveyor

Robert Joseph Milts

I hereby certify this is an exact copy of the original.

Robert Joseph Milts

- LEGEND
- ⊙ Monument Found
  - Set 5/8" x 24" Iron Pin
  - ⊗ Set 5/8" x 30" Iron Pin
  - Street Monumentation, Brass Disc Set in Concrete
  - P.U.E. Public Utility Easement for Telephone, Electric Power, Gas, Television, Sanitary Sewer, Storm Sewer, and Domestic Water

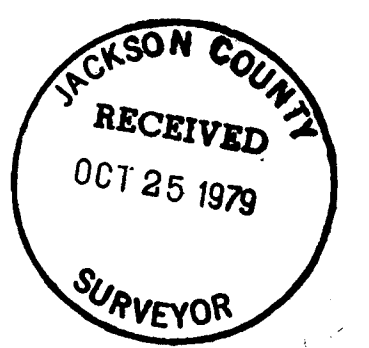
CURVE DATA

A	Δ 89° 52' 40"	R=20'	L=31.37
B	Δ 90° 07' 20"	R=20'	L=31.46
C	Δ 46° 11' 10"	R=20'	L=16.12

Subscribed and sworn to before me this 11<sup>TH</sup> day of SEPT., 1979.

Charles A. Strom

MAY 3, 1980



SCALE: 1" = 50'