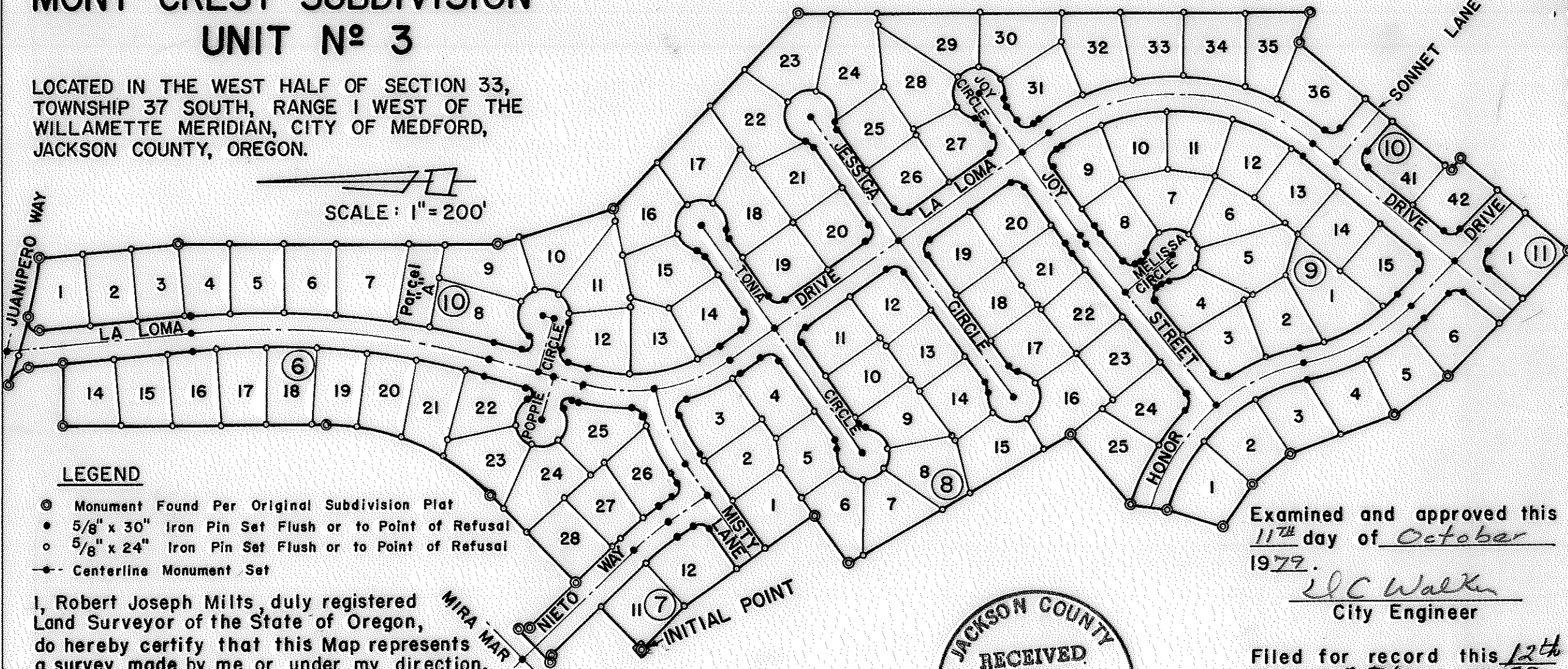


# MONT CREST SUBDIVISION UNIT N<sup>o</sup> 3

LOCATED IN THE WEST HALF OF SECTION 33,  
TOWNSHIP 37 SOUTH, RANGE 1 WEST OF THE  
WILLAMETTE MERIDIAN, CITY OF MEDFORD,  
JACKSON COUNTY, OREGON.

SCALE: 1" = 200'



### LEGEND

- ⊙ Monument Found Per Original Subdivision Plat
- 5/8" x 30" Iron Pin Set Flush or to Point of Refusal
- 5/8" x 24" Iron Pin Set Flush or to Point of Refusal
- Centerline Monument Set

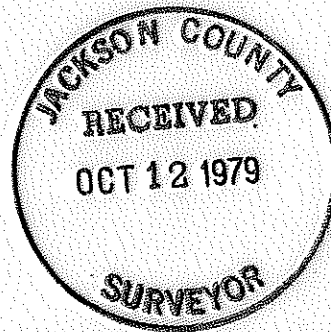
I, Robert Joseph Milts, duly registered  
Land Surveyor of the State of Oregon,  
do hereby certify that this Map represents  
a survey made by me or under my direction,  
and the monuments conform to O.R.S. 92.060.

NOTE: See Plat of Mont Crest Subdivision, Unit N<sup>o</sup> 3  
filed for record the 29th Day of December, 1978, at  
2:23 O'Clock P.M. and Recorded in Volume 13 of  
Plats on Page 68 of Records of Jackson County,  
Oregon, for lot bearings and distances.

REGISTERED  
PROFESSIONAL  
LAND SURVEYOR

*Robert Joseph Milts*

OREGON  
SEPTEMBER 23, 1977  
ROBERT JOSEPH MILTS  
No. 1270



Examined and approved this  
11<sup>th</sup> day of October  
1979.

*J.C. Walker*  
City Engineer

Filed for record this 12<sup>th</sup>  
day of October 1979  
at 10:12 O'Clock A.M. and  
recorded in the official  
records of Jackson County,  
Oregon.

*Waldene Terrey*  
County Clerk  
*Pauline E. McCormack*  
Deputy

350

1012

79-22709

8043