

79-19751

NORTHWOOD PARK SUBDIVISION

LOCATED IN D.L.C. NO. 41, N 1/2 OF SEC. 9, TWP. 38S., R. 1W.W.M.
JACKSON COUNTY OREGON

FOR DECLARATION OF RESTRICTIVE COVENANTS
SEE DOCUMENT No. 78-02421

I, Everett L. Swain, Duly Registered Surveyor of the State of Oregon, do hereby certify that this map represents a survey made by me or under my direction and the monuments conform to O.R.S. 92.060

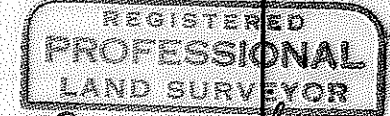
Everett L. Swain

POST MONUMENTATION MAP

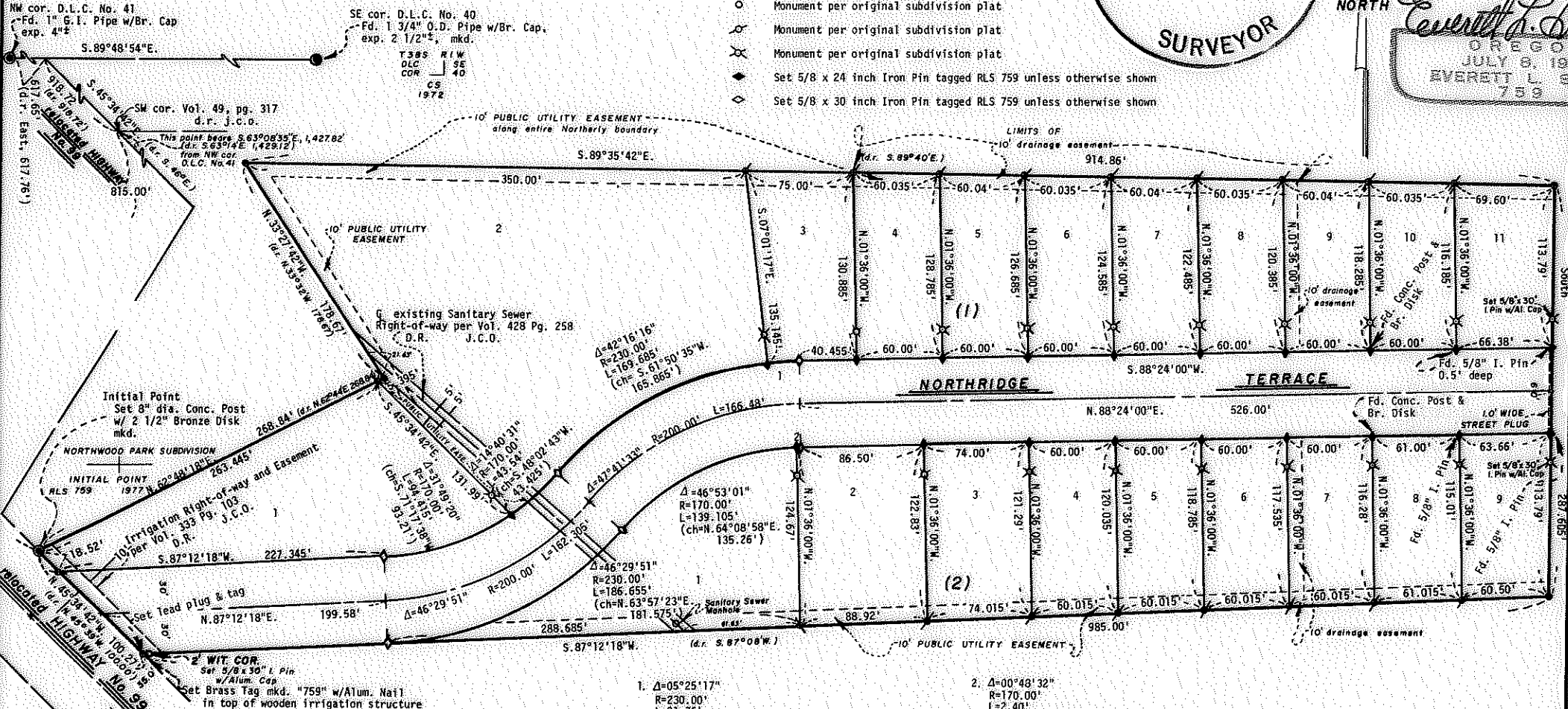
Scale: 1"=100'

Basis of Bearing:
Recorded Survey No. 2521

- Monument per original subdivision plat
- Monument per original subdivision plat
- ⊗ Monument per original subdivision plat
- ⊘ Monument per original subdivision plat
- ◆ Set 5/8 x 24 inch Iron Pin tagged RLS 759 unless otherwise shown
- ◇ Set 5/8 x 30 inch Iron Pin tagged RLS 759 unless otherwise shown



Everett L. Swain
OREGON
JULY 8, 1968
EVERETT L. SWAIN
759



NOTE:

1. S.O. Cable TV shall have the right to utilize the Public Utility Easement as hereon.
2. Highway alignment established from monuments shown on State Highway Map and Recorded Survey No. 1549

Examined and approved this 28 day of August 19 79

Edward A. McCusky
County Surveyor
by [Signature] Deputy

Filed for record this 7th day of Sept 19 79 at 3:14 o'clock P.M.
and recorded in the Official Records of Jackson County, Oregon.

Wallace Terry County Clerk
Pauline E. McCormack Deputy

79-19751