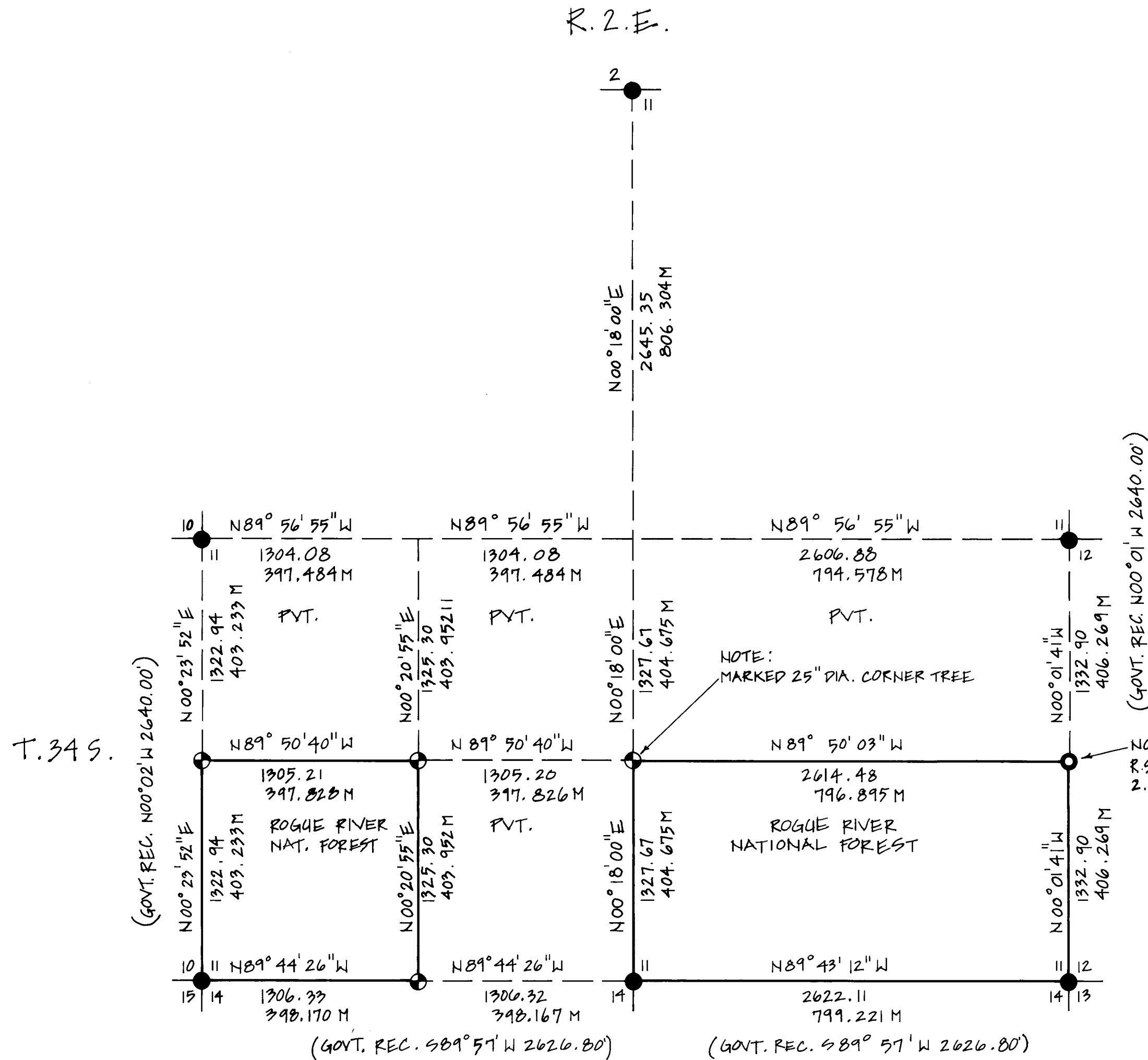
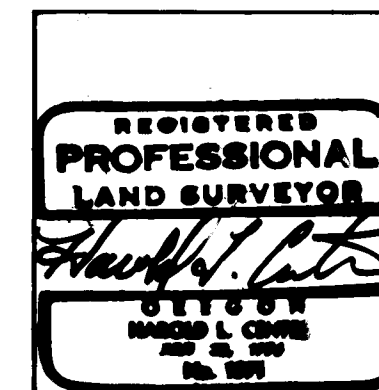
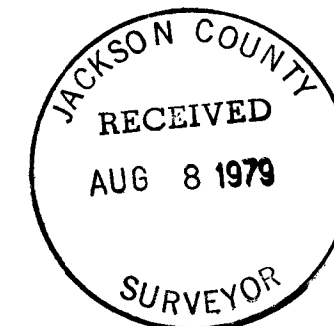
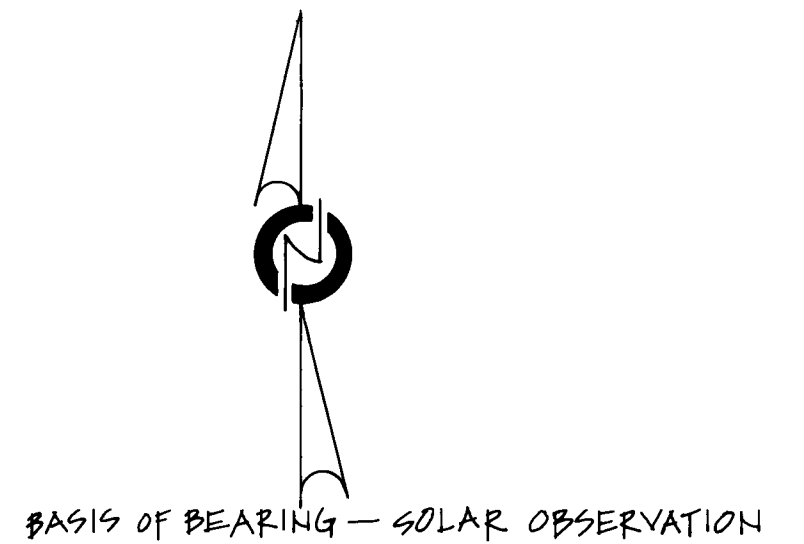


MAP OF SURVEY
FOR
ROGUE RIVER NATIONAL FOREST
P.O. BOX 520
MEDFORD, OREGON
JUNE 26, 1979



LEGEND:

- FOUND STANDARD BLM MONUMENT
 - ⊕ SET 2 1/2" DIA. X 30" LG. IRON POST WITH 2 1/2" DIAMETER BRASS CAP UNLESS OTHERWISE NOTED.
 - FOUND 2" DIA. IRON PIPE WITH STEEL PLUG - SET R.S. NO. 461
 - TRUE LINE ESTABLISHED AND POSTED THIS SURVEY.
 - - - SECTION LINE CALCULATED FROM TRAVERSE SURVEY.
- SCALE: 1" = 600'
- 1 METER = 3.280833'



HISTORY OF SURVEY

ORIGINAL SURVEYS WERE PERFORMED BY DEPUTY SURVEYOR NATHANIEL FORD UNDER CONTRACT NO. 58 DATE APRIL 18TH 1855.
CONTROLLING SECTION AND QUARTER SECTION CORNERS WERE REMONUMENTED BY THE BUREAU OF LAND MANAGEMENT (BLM) IN 1968 AND 1974 EVIDENCE OF UNRECORDED SURVEY LINES AND MONUMENTS WERE FOUND AS NOTED WITHIN ATTACHED NARRATIVE.

CERTIFICATE OF SURVEY

I, HAROLD L. CENTER REGISTRATION NO 1071 REGISTERED PROFESSIONAL LAND SURVEYOR, STATE OF OREGON, HEREBY CERTIFY THAT THIS MAP CORRECTLY REPRESENTS A SURVEY MADE BY ME OR UNDER MY DIRECTION IN CONFORMANCE WITH THE LAW OF THE STATE OF OREGON, AT THE REQUEST OF THE U. S. FOREST SERVICE.

U.S. DEPARTMENT OF AGRICULTURE FOREST SERVICE	
REGION 6	ROGUE RIVER NAT. FOREST
DEPENDENT SURVEY SECTION II	
TOWNSHIP 34 SOUTH, RANGE 2 EAST WILLAMETTE MERIDIAN — JACKSON CO. OREGON	
SURVEYED BY <u>H. Center</u>	DATE <u>6-79</u>
REVIEWED BY <u>De McDonald</u>	DATE <u>8/79</u>
APPROVED BY <u>Dick Anthony</u>	DATE <u>8/7/79</u>

From which the following references:

A 7 inch diameter cedar bears S 19° 03' E 22.20 feet distance. Scribed SW 1/16 S11 LS 1071 BT.

A 8 inch diameter fir bears N 78° 27' W 20.90 feet distance. Scribed SW 1/16 S11 LS 1071 BT.

I found no unrecorded monument at this corner location. I did recover a broken squared stake marked approx. CSW 1/16.

Center south one sixteenth corner Section 11, Township 34 South, Range 2 East.

At the corner position I marked a 25 inch diameter fir as a corner tree. I scribed this tree as follows:

Cor tree CS 1/16 S11 LS 1071. In addition, I drove a #8D iron spike in the westerly edge of the tree root crown at the proper corner point.

From which the following references:

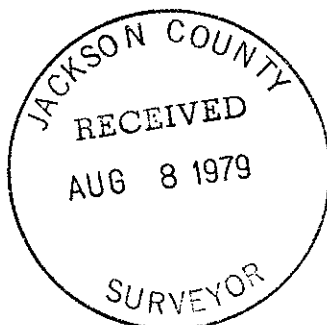
A 6 inch diameter yew bears N 18° 00' E 18.50 feet distance. Scribed CS 1/16 S11 LS 1071 BT.

A 5 inch diameter hemlock bears S 39° 00' W 53.10 feet distance. Scribed X-BT.

At a point approximately 50 feet distance westerly, I found evidence of an unrecorded iron pipe to have been set previously along with 2 unrecorded witness trees.

This survey performed using Wild T-16 and T-2E theodolite and Hewlett-Packard 3805 electronic distance meters.

HAROLD L. CENTER
Registered Professional Land Surveyor
Oregon Certificate No. 1071



From which the following references:

A 10 inch diameter hemlock bears N 05° 18' W 40.40 feet distance.
Scribed W 1/16 S11 LS 1071 BT.

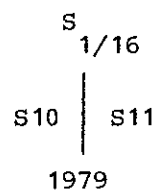
A 18 inch diameter hemlock bears S 17° 03' W 50.91 feet distance.
Scribed W 1/16 S14 LS 1071 BT.

An unrecorded 1/2 inch diameter iron pipe bears N 50° W 17.14 feet distance.

South one sixteenth corner common to Sections 10 and 11, Township 34 South, Range 2 East.

At the corner position I set a 2 1/2 inch diameter galvanized iron pipe with a 2 1/2 inch diameter brass cap marked:

T34S R2E



LS 1071

From which the following references:

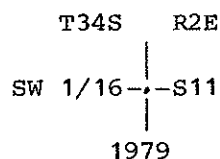
A 7 inch diameter fir bears S 37° 21' W 9.30 feet distance. Scribed S 1/16 S10 LS 1071 BT.

A 10 inch diameter hemlock bears S 88° 40' E 19.00 feet distance.
Scribed S 1/16 S11 LS 1071 BT.

An unrecorded 1/2 inch diameter iron pipe bears N 55° 22' W 20.00 feet distance.

Southwest one sixteenth corner Section 11, Township 34 South, Range 2 East.

At the corner position I set a 2 1/2 inch diameter galvanized iron pipe with a 2 1/2 inch diameter brass cap marked:



LS 1071

From which the following references:

A 10 inch diameter yew bears N 52° 27' W 11.90 feet distance. Scribe visible.

A 9 inch diameter yew bears S 30° 00' E 46.20 feet distance. Scribe visible.

South one sixteenth corner common to Sections 11 and 12, Township 34 South, Range 2 East, established by Registered Land Surveyor No. 461, D. A. Smeltzer in his 1963 survey of Section 12 (Ref. R. S. No. 2317).

At the corner point I found a 2 inch diameter iron pipe with steel plug marked:

S
RS 461
11 | 12
1/16

From which the following references:

A 12 inch diameter fir bears N 69° 37' W 6.06 feet distance. Scribe visible on a partial healed blaze.

A 10 inch diameter fir bears N 86° 05' E 14.82 feet distance. Double healed blaze.

I found this corner to be N 43° 31' E 2.16 feet distance from the true corner position. I set no new monument for this corner to avoid duplication of monuments at corner position.

Corners established this survey:

West one sixteenth corner common to Sections 11 and 14, Township 34 South, Range 2 East.

At the corner position I set a 2½ inch diameter galvanized iron pipe with a 2½ inch diameter brass cap marked:

T34S R2E
W 1/16 — $\frac{S11}{S14}$ —

1979

LS 1071

To replace the 30 inch diameter fir I marked the following reference:

A 14 inch diameter fir bears S 18° 30' W 63.90 feet distance. Scribbled
1/4 S11 LS 1071 BT.

Section corner common to Sections 11, 12, 13 and 14, Township 34 South,
Range 2 East.

At the corner point I found a standard BLM Monument marked:

U.S. Dept. of Interior
Unlawful to disturb

T34S R2E

S11	S12
S14	S13

1968

Cadastral Surveys
Bureau of Land Management

From which the following references:

A 20 inch diameter fir bears N 25° 56' E 44.95 feet distance.

A 24 inch diameter fir bears N 44° 42' E 33.32 feet distance.

A 24 inch diameter cedar bears S 49° 53' E 6.70 feet distance.

A 12 inch diameter fir bears N 76° 53' W 43.38 feet distance.

A 12 inch diameter fir bears S 30° 57' W 58.38 feet distance.

One quarter corner common to Sections 11 and 14, Township 34 South, Range 2
East.

At the corner point I found a standard BLM Monument marked:

U.S. Dept. of Interior
Unlawful to disturb

T34S R2E

1/4	S11
	S14

1968

Cadastral Surveys
Bureau of Land Management

At the corner point I found a standard BLM Monument marked:

U.S. Dept. of Interior
Unlawful to disturb

T34S R2E

$\frac{1}{4}$ $\frac{S2}{S11}$

1968

Cadastral Surveys
Bureau of Land Management

From which the following references:

A 18 inch diameter yew bears S 80° 40' W 41.80 feet distance. Scribe visible.

A 15 inch diameter fir bears N 39° 55' E 17.10 feet distance. Scribe visible.

One quarter corner common to Sections 11 and 12, Township 34 South, Range 2 East.

At the corner point I found a standard BLM Monument marked:

U.S. Dept. of Interior
Unlawful to disturb

$\frac{1}{4}$
S11 | S12
1968

Cadastral Surveys
Bureau of Land Management

From which the following references:

A 15 inch diameter fir bears S 60° 16' E 19.50 feet distance. Healed blaze.

Remains of a 30 inch diameter fir stump and remaining tree at record N 44° 00' W 26.40 feet distance.

From which the following references:

A 36 inch diameter fir bears S 48° 29' W 58.71 feet distance. Scribe visible.

A 13 inch diameter hemlock bears N 23° 53' W 31.07 feet distance. Scribe visible.

A 34 inch diameter fir bears N 45° 01' E 30.20 feet distance. Scribe visible.

A 36 inch diameter fir bears S 76° 42' E 27.10 feet distance. Scribe visible.

One quarter corner common to Sections 10 and 11, Township 34 South, Range 2 East.

At the corner point I found a standard BLM Monument marked:

U.S. Dept. of Interior
Unlawful to disturb

T34S R2E

S10 | S11

1968

Cadastral Surveys
Bureau of Land Management

From which the following references:

Note - I make no measurement or bearing determinations to these references. BLM bearings and distances were used to locate trees from monument using a hand compass and cloth tape with no apparent discrepancies noted.

BLM references:

A white fir, 17 inch in diameter, bears N 19° E 93 links.

A white fir, 7 inch in diameter, bears N 67° W 70 links.

One quarter corner common to Sections 2 and 11, Township 34 South, Range 2 East.

SURVEY NARRATIVE TO COMPLY WITH
PARAGRAPH 209.250 OREGON REVISED STATUTES

SURVEY FOR: Rogue River National Forest
P. O. Box 520
Medford, Oregon 97501

LOCATION: Section 11, Township 34 South, Range 2 East,
Willamette Meridian, Jackson County, Oregon.

BASIS OF BEARING: Solar observation.

PURPOSE: To establish monuments and mark and post property
lines separating National Forest and private lands
within the south half of Section 11.

PROCEDURE: A control net was established tying controlling
corners necessary for the subdivision of Section
11. In addition, a series of random traverse lines
were run around the south half of the southeast
one-quarter Section 11 and the southwest one-
quarter of the southwest one-quarter Section 11
closing each line to my control net. From this
data, corners were established and lines posted as
shown on the attached map of survey.

Corners accepted for control:

Section corner common to Sections 10, 11, 14, and 15, Township 34 South,
Range 2 East.

At the corner point I found a standard BLM Monument marked:

U.S. Dept. of Interior
Unlawful to disturb

T34S R2E

S10		S11
<hr/>		
S15		S14

1974

Cadastral Survey
Bureau of Land Management