

286A

①
FOUND BRASS CAP MONUMENT IN
EDGE PAVED ROAD 2.5' NORTH
OF SOUTH SIDE OF CURB MARKED:
SHAIN SURVEYING T395 RIE

522 | 523
527 | 526
RLS 759
1974

GOVT. RECORD
N00°39'W 5344.68
(80.98 CH)

REFERENCES:
10" PINE N28°19'W 60.50'
10" PINE N29°46'E 40.00'
18" D. FIR S28°12'E 78.10'
14" D. FIR S16°03'W 21.80'

②
SET-2 1/2" DIAMETER BRASS DISK IN
BEDROCK ON WEST BANK OF TOLMAN
CREEK MARKED: T395 RIE

1/4
521 | 526
1979
LS 1071

REFERENCES:
21" FIR S74°03'W 26.95'
SCRIBED 1/4 S 21 LS 1071 BT
25" PINE N38°53'E 105.00'
SCRIBED 1/4 S 26 LS 1071 BT
A 3/4" DIAMETER GALVANIZED IRON
PIPE BEARS N57°27'W 24.33'

③
FOUND BRASS CAP MONUMENT
MARKED: T395 RIE

521 | 526
534 | 535
1973
RLS 759

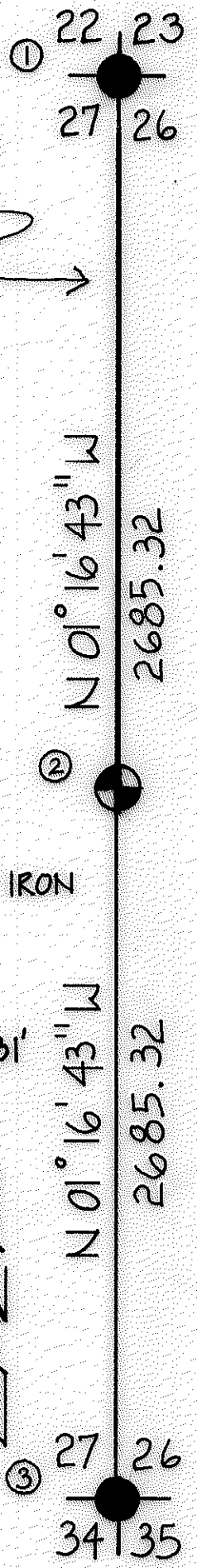
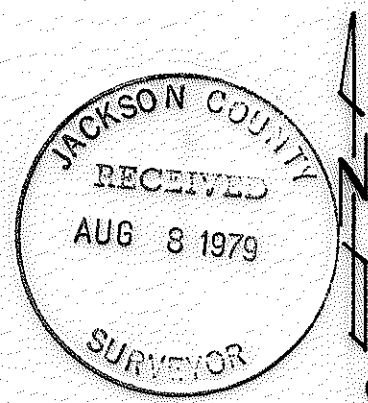
REFERENCES:
33" D. FIR N81°10'E 21.09'
10" MADRONA S41°57'E 13.31'
6" S. PINE S64°01'W 30.80'
6" D. FIR N75°07'W 20.80'

MAP OF SURVEY
LOCATED IN
SEC. 27 & 26, T395 RIE WM
JACKSON CO. OREGON
FOR
ROGUE RIVER NAT. FOREST
JULY 18, 1979

BASIS OF BEARING - SOLAR OBSERVATION
SCALE 1" = 600' SCALE IN FEET



● FOUND MONUMENT
⊙ SET 2 1/2" DIA. BRASS DISK



REGISTERED PROFESSIONAL LAND SURVEYOR
Davidson-Center
OFFICE
MADISON & CENTER
ASTORIA, OREGON
1979

U. S. DEPARTMENT OF AGRICULTURE
FOREST SERVICE
REGION 6
ROGUE RIVER NAT. FOREST
SURVEYED BY DAVIDSON-CENTER DATE 7-79
REVIEWED BY D. McDonald DATE 7/30/79
APPROVED BY R. J. Hathaway DATE 7/30/79

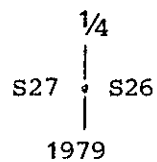
286A

Corner established this survey:

The one quarter corner common to Sections 26 and 27, Township 39 South, Range 1 East, Willamette Meridian.

At the proportioned corner location I set a 2 1/2-inch diameter brass disk in bed rock on the west bank of Tolman Creek marked:

T39S R1E



LS 1071

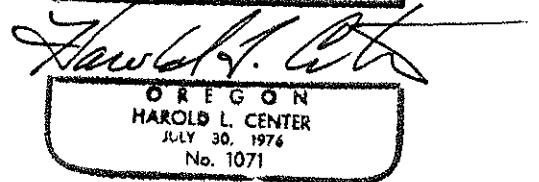
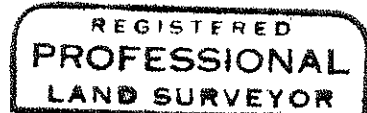
From which the following references:

A 24 inch diameter fir bears S 74° 03' W 26.95 feet distance. Scribed 1/4 S27 LS 1071 BT.

A 25 inch diameter pine bears N 38° 53' E 105.00 feet distance. Scribed 1/4 S26 LS 1071 BT.

A 3/4' inch diameter galvanized iron pipe (protrudes 30" above ground level) bears N 57° 27' W 24.33 feet distance.

HAROLD L. CENTER
Registered Professional Land Surveyor
Oregon Certificate No. 1071



From which the following references:

A 33 inch diameter fir bears N 87° 10' E 21.09 feet distance. Open face with scribe marks visible.

A 10 inch diameter madrona bears S 41° 57' E 13.31 feet distance. Bark scribe T39S R1E S35 BT 759 visible.

A 6 inch diameter s. pine bears S 64° 01' W 30.80 feet distance. Scribe visible on partial healed blaze.

A 6 inch diameter Douglas-fir bears N 75° 07' W 20.80 feet distance. Scribe visible on partial healed blaze.

The section corner common to Sections 22, 23, 26 and 27, Township 39 South, Range 1 East, Willamette Meridian.

At the corner point I found a 2½-inch diameter brass cap set flush with pavement surface and approximately 2.50 feet distance north of the south curb line of Forest Road No. 392 marked:

Swain Surveying

T39S	R1E
S22	S23
S27	S26
RLS 759	

1974

From which the following references:

A 10 inch diameter pine bears N 28° 19' W 60.50 feet distance. Partial healed blaze.

A 10 inch diameter pine bears N 29° 46' E 40.00 feet distance. Scribe visible on a partial healed blaze.

A 18 inch diameter Douglas-fir bears S 28° 12' E 78.10 feet distance. Partial healed blaze.

A 14 inch diameter Douglas-fir bears S 16° 08' W 21.80 feet distance. Partial healed blaze.

SURVEY NARRATIVE TO COMPLY WITH
PARAGRAPH 209.250 OREGON REVISED STATUTES

SURVEY FOR: Rogue River National Forest
P. O. Box 520
Medford, OR 97501

LOCATION: West half (1/2) Section 26 and East half (1/2) Section 27,
Township 39 South, Range 1 East, Willamette Meridian,
Jackson County, Oregon.

BASIS OF BEARING: Solar observation

PURPOSE: To monument the one quarter corner common to Sections 26
and 27, Township 39 South, Range 1 East, Willamette
Meridian, and mark and post the South half of the common
line between Sections 26 and 27.

PROCEDURE: A closed traverse was ran tying the section corner com-
mon to Sections 26, 27, 34 and 35 and the section corner
common to Sections 22, 23, 26, and 27. From this data
true lines were computed and corners established at the
locations as shown on the attached map of survey.

Survey was performed using a wild T-16 Theodolite and
Hewlett-Packard 3805 Electronic Distance Meter.

Corners accepted for control:

The section corner common to Sections 26, 27, 34 and 35, Township 39 South,
Range 1 East, Willamette Meridian.

At the corner point I found a one-inch diameter iron pipe with 2 1/2-inch brass cap
marked:

T39S	R1E
S27	S26
S34	S35

1973

RLS 759