

HISTORY OF SURVEYS

The subdivision of Township 38 South, Range 4 East was surveyed by M. L. McCall under Contract No. 137, dated August 18, 1870. Additional survey work as follows: "Retracement and Survey a portion of Subdivisional Lines in Township 38 South, Range 4 East" by Fred W. Rodolf under special instructions, dated August 19, 1916 - Group 31 -. Survey No. 6505 conducted for Lumber Mills Corporation of California in Section 9 by Registered Professional Land Surveyor No. 759 in 1976. The original Government section corners and quarter section corners that were previously re-established, have been monumented by the Bureau of Land Management, Jackson County Surveyor and private surveyors.

GENERAL NOTES

This survey was extended, in part, from the previous survey executed for Lumber Mills Corporation of California and filed for record as Survey No. 6505 in the office of the Jackson County Surveyor. The control for Lumber Mills Corporation survey was executed with a Wild T-2 theodolite and a Hewlett-Packard 3800A distance meter. This survey utilized Wild T-2 theodolites and both the Hewlett-Packard 3805A and 3808A distance meter. The bearing is based upon Recorded Survey No. 6505. All major control lines, established in this survey, were closed traverses. Any side ties were either established by a separate closed traverse and connected to the major control lines or two (2) independent lines were established to the same point, thereby giving a coordinate check for all points. All section lines blazed and posted were established by offsets from the random traverse line to the section line in question. Trees on the U.S. Forest Service side of the section line were quarter blazed with a single hack mark above and below said blaze. Trees on private land were single blazed facing toward the section line. All blazes and hacks were painted with red paint. Fiberglass posts with U.S. Forest Service signs No. 54-2 were placed at intervals of intervisibility, if the brush were removed, but not more than 300 foot intervals. Orange fluorescent ribbon was hung along the section lines designated to be "posted and marked" to help identify said section lines. See narrative for additional information.

CERTIFICATION

I, Everett L. Swain, Registered Professional Land Surveyor No. 759 of the State of Oregon, hereby certify that this map and the attached narrative are a correct representation of a survey executed by me or under my direction, in the months of May, June and July of 1979, for the United States Forest Service in accordance with the statutes of the State of Oregon and the instructions as set forth in the Forest Service Cadastral Survey Contract No. 53-04H1-9-7355N.

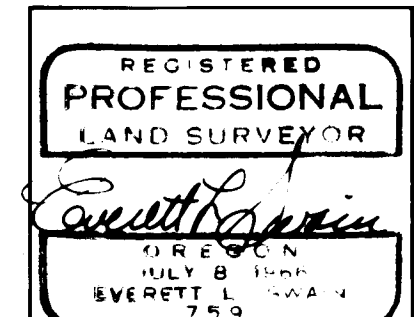
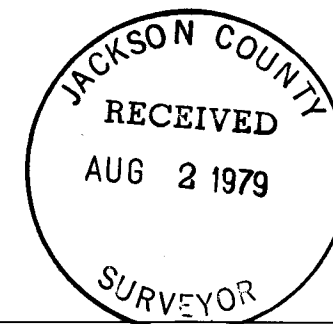
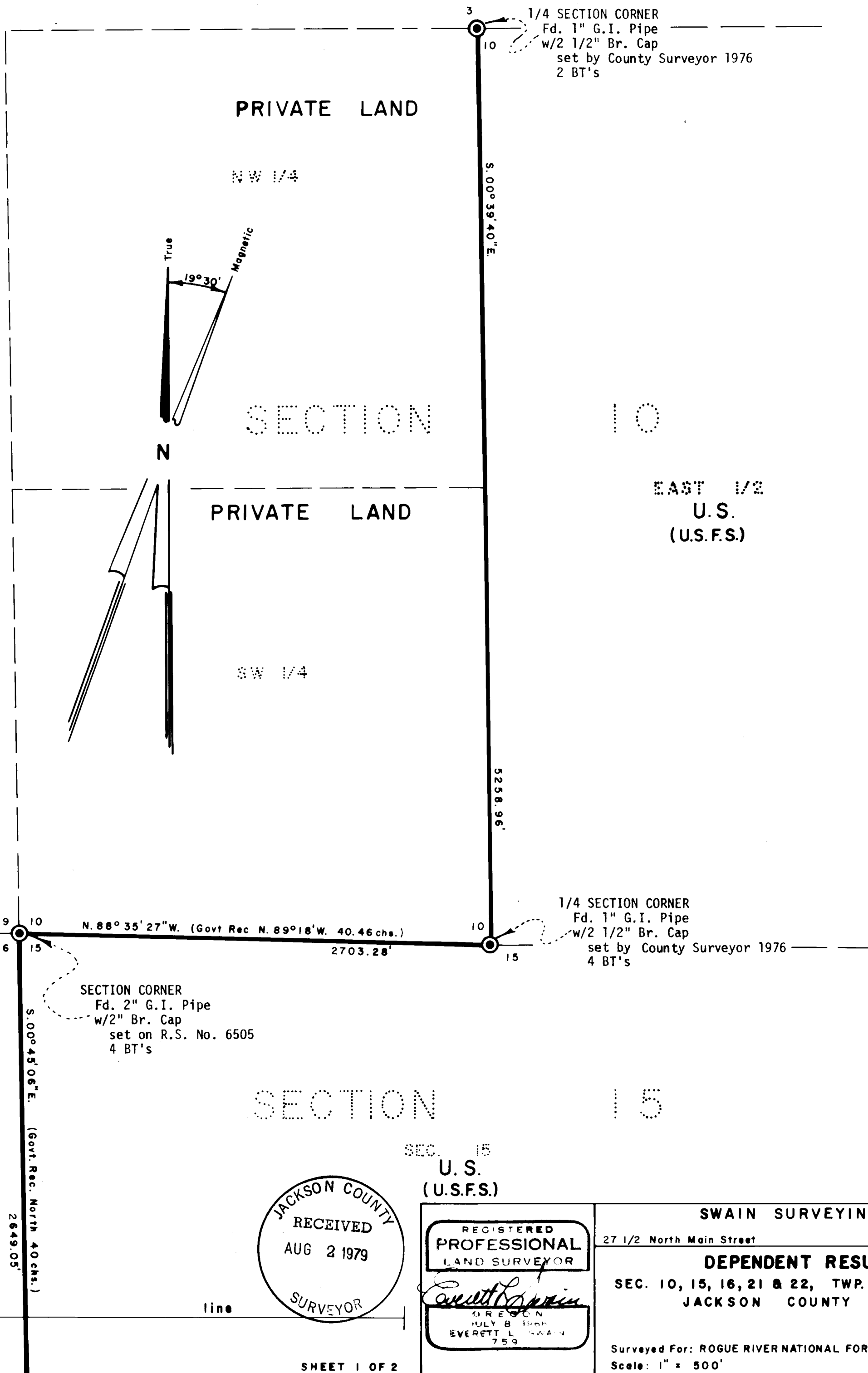
Everett L. Swain
 Everett L. Swain
 RPLS No. 759 - Oregon

APPROVED:
Donald A. Coe R.L.S. 8-2-79
 U.S. Forest Service C.O.R. Date

SECTION 16

SEC. 16
 PRIVATE LAND

match



SWAIN SURVEYING, INC. 27 1/2 North Main Street Ashland, Oregon	
DEPENDENT RESURVEY SEC. 10, 15, 16, 21 & 22, TWP. 38 S., R. 4 E.W.M. JACKSON COUNTY OREGON	
Surveyed For: ROGUE RIVER NATIONAL FOREST Medford, Oregon Scale: 1" = 500' July 30, 1979	

TWP. 38 S., R. 4 E., SEC. 10, 15, 16, 21, 22

exposed 4 inches in a mound of stones from which:

ORIGINAL BEARING TREES

A White Fir, 36.5 inches in diameter, brs. N.68°11'E., 50.23 feet with healed blazes. (Govt. Rec. A Fir, 10 inches in dia., brs. N.67°E., 79 lks. = 52.14 feet).

BEARING TREES by County Surveyor, 1956

A Cedar, 10.5 inches in diameter, brs. N.11°38'E., 56.70 feet with partially healed blazes. (Rec. scribed a 7 inch cedar "CS BT" which bears N. 11 1/2°E., 56.4 feet).

A Cedar, 24 inches in diameter, brs. S.50°05'W., 52.84 feet with healed blazes. (Rec. scribed a 17 inch cedar "CS BT" which bears S.50°W., 52.6 feet)

A White Fir, 8 inches in diameter, brs. N.37°43'W., 19.50 feet with healed blazes. (Rec. scribed a 4 inch White Fir "CS BT" which bears N.37°W., 19.3 feet).

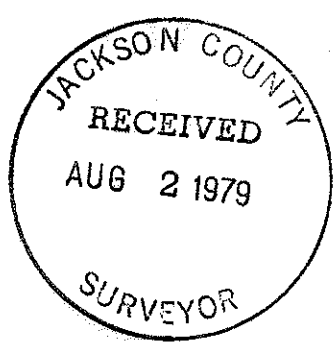
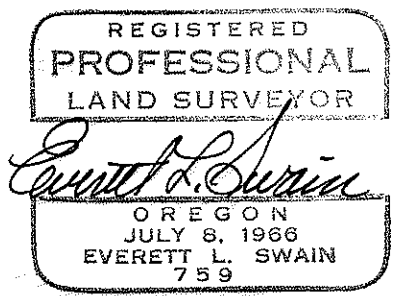
BEARING TREES by County Surveyor, 1976

A White Fir, 12.8 inches in diameter, brs. S.04°35'E., 21.50 feet with scribing visible in partially healed blaze. (Rec. W. Fir, 12 inches, dia., bears S. 4 1/2° E., 21.4 feet).

Set a fence post with U.S. Forest Service sign No. 54-4, North, 5.0 feet.

July 30, 1979

Swain Surveying, Inc.
Ashland, Oregon



feet, scribing visible. (Govt. Rec. A Fir, 24 inches in diameter
brs. S.18°E., 19 lks. = 12.54 feet)

A White Fir, 28.4 inches in diameter, brs. N.30°16'W., 6.00 feet
with healed blazes. (Govt. Rec. A Fir, 15 inches in diameter,
brs. N.31°W., 8 lks. = 5.28 feet)

BEARING TREES by BLM, 1973

A White Fir, 6.7 inches in diameter, brs. S.58°21'W., 38.60 feet
with healed blazes. (BLM Rec. A White Fir, 6 inches in diameter,
brs. S. 57 1/2° W., 58 1/2 lks. = 38.61 feet)

A Douglas Fir, 45.5 inches in diameter, brs. N.66°17'W., 62.46
feet, scribing visible on partially healed blaze. (BLM Rec. A
Fir, 45 inches in diameter, brs. N.67°W., 94 lks. = 62.04 feet)

Set fence post with U.S. Forest Service sign No. 54-4, East, 5.0
feet.

SECTION CORNER common to Sections 14, 15, 22 and 23, Township 38 South,
Range 4 East

At the corner point found a 1 1/2 inch diameter galvanized iron
pipe with 2 1/2 inch diameter bronze cap marked:

U.S. GENERAL LAND OFFICE SURVEY
PENALTY \$200 FOR REMOVAL
T38S R4E
S15 | S14
S22 | S23
1917

exposed 18 inches in a mound of stones from which:

ORIGINAL BEARING TREES by F.W. Rodolf, 1917

A Fir Snag, 28 inches in diameter, brs. N.26°37'E., 22.80 feet
with scribing found nailed to snag. (Govt. Rec. A Fir (white)
28 inches in dia., brs. N.35°E., 33 lks. = 21.78 feet)

BEARING TREES by County Surveyor

A White Fir, 12 inches in diameter, brs. S.85°58'W., 18.00 feet,
scribing visible in partially healed blaze. (Rec. W. Fir, 12
inches (30 cm) dia., bears S.86 1/2°W., 17.97 feet (5.48 m)

A White Fir, 9.5 inches in diameter, brs. N.09°19'W., 8.70 feet
with scribing visible in partially healed blaze. (Rec. W. Fir,
8 inches (20 cm) dia. bears N.8°W. 8.75 feet (2.67 m)

A White Fir, 9.5 inches in diameter, brs. N.47°14'E., 15.50 feet
with scribing visible in partially healed blaze. (Rec. W. Fir,
8 inches (20 cm) dia., bears N.49°E., 15.70 feet (4.79 m)

A White Fir, 7 inches in diameter, brs. S.63°48'E., 8.90 feet with
scribing visible in partially healed blaze. (Rec. W. Fir, 7 inches
(18 cm) dia. bears S.62°E., 8.93 feet (2.72 m)

Set a fence post with U.S. Forest Service sign No. 54-4, West,
5.0 feet.

SECTION CORNER common to Sections 21, 22, 27 and 28, Township 38
South, Range 4 East

At the corner point found a 1 inch diameter galvanized iron pipe
with 1 1/2 inch expander filled with pot metal, marked:

T38S R4E
21 | 22
28 | 27
CS 1956

A White Fir, 17 inches in diameter, brs. S.02°48'E., 9.42 feet, scribing visible on partially healed blaze. (Rec. per R.S. No. 6505 A White Fir, 15.3 inches in diam., brs. S.02°56'E., 9.25 feet dist., scribed 1/4 S15 BT. Dist. to ctr. tree)

Set fence post with U.S. Forest Service sign No. 54-4, South, 5.0 feet.

SECTION CORNER common to Sections 16, 17, 20 and 21, Township 38 South, Range 4 East

At the corner point found a 2 inch galvanized iron pipe with 3 1/4 inch diameter bronze cap marked:

U.S. DEPT. OF INTERIOR
UNLAWFUL TO DISTURB
T38S R4E
S17 | S16
S20 | S21
1973
CADASTRAL SURVEY
BUREAU OF LAND MANAGEMENT

exposed 9 inches

ORIGINAL BEARING TREES:

A White Fir, dead and down, 21 inches in diameter, brs. S.34°55'E., 16.4 feet to approx. ctr. of stump hole, scribing visible. (Govt. Rec. A Fir, 24 inches in dia., brs. S.31°E., 23 lks. = 15.18 feet)

A White Fir, 29.4 inches in diameter, brs. S.69°29'W., 44.80 feet with healed blazes. (Govt. Rec. A Fir, 14 inches in dia., brs. S.69°W., 73 lks. = 48.18 feet)

BEARING TREES by BLM, 1973

A Yew, 6.6 inches in diameter, brs. N.79°21'E., 44.50 feet, scribing visible on partially healed blaze. (BLM Rec. A double trunked Yew, 15 inches in diam., brs. N.80°E., 68 1/2 lks. = 45.21 feet)

A Douglas Fir, 74.2 inches in diameter, brs. N.47°56'W., 53.80 feet, scribing visible on partially healed blaze. (BLM Rec. A Fir, 72 inches in diam., brs. N.47 1/2°W., 81 lks. = 53.46 feet)

NEW BEARING TREE

A White Fir, 6 inches in diameter, brs. S45°14'E., 52.2 feet, scribed X BT. The X was placed on small blaze at breast height.

Set fence post with U.S. Forest Service sign No. 54-4, East, 5.0 feet.

1/4 SECTION CORNER common to Sections 15 and 22, Township 38 South, Range 4 East

At the corner point found a 2 inch galvanized iron pipe with 3 1/4 inch diameter bronze cap marked:

U.S. DEPT. OF THE INTERIOR
UNLAWFUL TO DISTURB
T38S R4E
1/4 S15
S22
CADASTRAL SURVEY
BUREAU OF LAND MANAGEMENT

ORIGINAL BEARING TREES

A White Fir Snag, 30 inches in diameter, brs. S.17°55'E., 13.30

A Yew, 6.3 inches in diameter, brs. N.19°41'E., 23.80 feet with "CS BT" visible in partially healed blaze. (CS Rec. Yew, 6 inches diameter, brs. N.20°E., 23.90 feet)

A White Fir, 16.8 inches in diameter, brs. S.32°35'E., 33.35 feet with "CS BT" visible in partially healed blaze. (CS Rec. W. Fir, 17 inches dia. brs. S.33°E., 33.30 feet)

Set a fence post with U.S. Forest Service sign No. 54-4, North, 5.0 feet.

SECTION CORNER common to Sections 9, 10, 15 and 16, Township 38 South, Range 4 East

At the corner point found a 2 inch galvanized iron pipe with 3 inch diameter bronze cap marked:

SWAIN SURVEYING			
T38S R4E			
S9		S10	
Sec	S16	S15	Cor
RLS 759		1976	

exposed 3 inches, as set and shown on Recorded Survey No. 6505 from which:

BEARING TREES by E. Swain, 1976

A Red Fir, 11 inches in diameter, brs. S.24°37'W., 74.22 feet, scribing visible in partially healed blaze.

A White Fir, 14 inches in diameter, brs. N.08°19'E., 42.4 feet, scribing visible in partially healed blaze.

A Red Fir, 9 inches in diameter, brs. S.34°38'E., 148.5 feet, scribing visible in partially healed blaze.

A White Fir, 12 inches in diameter, brs. N.61°49'W., 179.1 feet, scribing visible in partially healed blazes.

Set a fence post with U.S. Forest Service sign No. 54-4, East, 5.0 feet.

1/4 SECTION CORNER common to Sections 15 and 16, Township 38 South, Range 4 East

At the corner point found a 2 inch galvanized iron pipe with 3 inch diameter bronze cap marked:

SWAIN SURVEYING			
T.38S. R.4E.			
1/4 S16		S15	Cor
RLS 759		1976	

exposed 6 inches in mound of stones as set and shown on Recorded Survey No. 6505 from which:

ORIGINAL BEARING TREES:

A Fir, 27 inches in diameter, brs. N.59°57'E., 29.04 feet to face of blaze, 29.2 feet to ctr. of tree. No scribing visible at this time. (Govt. Rec. A Fir, 10 inches in dia., brs. N.60°E., 44 lks. = 29.04 feet)

BEARING TREES by E. Swain, 1976

A Yew, 4.5 inches in diameter, brs. N.33°35'E., 8.85 feet, scribing visible on partially healed blaze. (Rec. per R.S. No. 6505 A Yew 4 inches in diam., (most Southerly of a triple fork brs. N.33°30'E., 8.65 feet dist., scribed 1/4 S15 BT. Dist. to ctr. of fork)

A White Fir, 17 inches in diameter, brs. N.58°19'W., 45.91 feet, scribing visible on partially healed blaze. (Rec. per R.S. No. 6505 A White Fir, 13.6 inches in diam., brs. N.58°19'W., 45.95 feet dist., scribed 1/4 S16 BT. Dist. to ctr. tree)

NEW BEARING TREES:

A White Fir, 9 inches in diameter, brs. N.64°21'W., 16.98 feet, scribed "T38S R4E S16 BT". Nailed a tag marked "LS 759" to face of lower blaze.

A White Fir, 8.5 inches in diameter, brs. N.05°00'E., 9.40 feet, scribed "T38S R4E S15 BT". Nailed a tag marked "LS 759" to face of lower blaze.

A Red Fir, 18 inches in diameter, brs. S.83°44'E., 43.28 feet, scribed "T38S R4E S22 BT". Nailed tag marked "LS 759" to face of lower blaze.

A White Fir, 13 inches in diameter, brs. S.09°54'W., 47.27 feet, scribed "T38S R4E S21 BT". Nailed a tag marked "LS 759" to face of lower blaze.

Set a fence post with U.S. Forest Service sign No. 54-4, South, 5.0 feet.

CORNERS FOUND AS SET BY OTHERS:

1/4 SECTION CORNER common to Sections 3 and 10, Township 38 South, Range 4 East.

At the corner point found a 1 inch galvanized iron pipe with 2 1/2 inch diameter bronze cap marked:

JACKSON COUNTY 1976
T38S R4E

1/4S $\frac{3}{10}$

2 inches below surface of road No. 3804 from which:

BEARING TREES scribed by L.E. Ager per R.S. No. 3380

A Fir, 37 inches in diameter, brs. N.41°16'E., 68.80 feet, with scribing visible in partially healed blaze. A railroad spike in lower blaze, 10 inches, m.o.l. above ground, brs. N.41°57'E., 66.58 feet. (Record N.43 1/4°E., 66.60 feet)

A Fir, 34.7 inches in diameter, brs. S.44°38'E., 23.37 feet, with scribing visible in partially healed blaze. A railroad spike in lower blaze, 10 inches, m.o.l. above ground, brs. S.46°16'E., 22.06 feet. (Record S.44°E., 22.10 feet)

1/4 SECTION CORNER common to Sections 10 and 15, Township 38 South, Range 4 East

At the corner point found 1 inch galvanized iron pipe with 2 1/2 inch diameter bronze cap marked:

JACKSON COUNTY 1976
T38S R4E

1/4S $\frac{10}{15}$

exposed 9 inches, as set by the Jackson County Surveyor from which:

ORIGINAL BEARING TREES:

A White Fir Stump, 21 inches in diameter, brs. S.40°54'W., 10.35 feet with scribing visible. (Govt. Rec. A Fir, 12 inches in diameter, brs. S.39°W., 15 lks. = 9.90 feet)

A White Fir, 12.4 inches in diameter, brs. N.34°05'W., 19.10 feet with healed blazes. (Govt. Rec. A Fir, 10 inches in diameter, brs. N.35°W., 28 lks. = 18.48 feet)

BEARING TREES by County Surveyor 1976

A White Fir, 12 inches in diameter, brs. N.10°34'E., 4.53 feet, scribed "1/4 S22 BT". Nailed a tag marked E.L. Swain to face of
 RLS 759
 Lower blaze.

A White Fir, 16 inches in diameter, brs. S.87°15'W., 57.8 feet, scribed "1/4 S21 BT". Nailed a tag marked E.L. Swain to face of
 RLS 759
 Lower blaze.

Set a fence post with U.S. Forest Service sign No. 54-4, South, 5.0 feet.

1/4 SECTION CORNER common to Sections 16 and 21, Township 38 South, Range 4 East

At the corner point found a 6 inch by 12 inch by 12 inch Granite Stone with 1/4 chiseled on Northerly face from which :

A Stump Hole, diameter indeterminate, with fir wood and bark fragments, brs. N.15°E., 19.5 feet. (Govt. Rec. = A Fir, 28 inches dia., brs. N.20°E. 28 lks. = 18.48 feet)

At the location of said found stone set a 30 inch long, 2 inch diameter galvanized iron pipe, 24 inches in the ground, with 2 1/2 inch diameter bronze cap marked:

T. 38S. R. 4E.
 1/4 $\frac{S16}{S21}$
 PLS 759

deposited found stone along side and built mound of stones around 1/4 section corner from which:

NEW BEARING TREES:

A White Fir, 11 inches in diameter, brs. S.57°49'W., 15.71 feet, scribed "1/4 S21 BT". Nailed a tag marked "LS 759" to face of lower blaze.

A White Fir, 11 inches in diameter, brs. N.45°53' W., 9.55 feet, scribed "1/4 S16 BT". Nailed a tag marked "LS 759" to face of lower blaze.

Set a fence post with U.S. Forest Service sign No. 54-4, West, 5.0 feet.

SECTION CORNER common to Sections 15, 16, 21 and 22, Township 38 South, Range 4 East.

At the corner point found a 6 inch by 11 inch by 13 inch Basalt Stone (Govt. Rec. Granite Stone) with 3 chisel marks on South face and 3 chisel marks on East face from which:

A Stump Hole, diameter indeterminate, brs. S.66°E., 22.0 feet. (Govt. Rec. A Fir, 14 inches dia., brs. S.65°E., 32 lks. = 21.12 feet)

A Stump Hole, diameter indeterminate, brs. S.34°W., 20.0 feet. (Govt. Rec. A Fir, 12 inches dia., brs. S.34°W., 30 lks. = 19.8 feet)

No evidence of other bearing tree locations.

At the location of said found stone, set a 30 inch long, 2 inch diameter galvanized iron pipe, 22 inches in the ground, with 2 1/2 inch diameter bronze cap marked:

T. 38S. R. 4E.
 Sec $\frac{S16 | S15}{S21 | S22}$ Cor
 PLS 759

built mound of stones around section corner from which:

SURVEY NARRATIVE TO COMPLY WITH PARAGRAPH 209.250
OREGON REVISED STATUTES

SURVEY FOR: Rogue River National Forest
P. O. Box 520
Medford, Oregon 97501

LOCATION: Sections 10, 15, 16, 21 and 22, Township 38 South, Range 4 East of the Willamette Base and Meridian, Jackson County, Oregon.

PURPOSE: To survey and mark the boundary lines as follows: North-South centerline of Section 10, the West one-half mile of the section line common to Sections 10 and 15, the section line common to Sections 15 and 16 and the section line common to Sections 15 and 22. Also, to locate and monument the following Government Section and 1/4 Section Corners: the 1/4 section corner common to Sections 9 and 16, 1/4 section corner common to Sections 21 and 22 and the section corner common to Sections 9, 10, 15 and 16.

HISTORY: The subdivision of Township 38 South, Range 4 East was surveyed by M.L. McCall under Contract No. 137, dated August 18, 1870. Additional survey work as follows: "Retracement and Survey a portion of Subdivisional Lines in Township 38 South, Range 4 East" by Fred W. Rodolf under special instructions, dated August 19, 1916 - Group 31-. Survey No. 6505 conducted for Lumber Mills Corporation of California in Section 9 by Registered Professional Land Surveyor No. 759 in 1976. The original Government section corners and quarter section corners that were previously re-established, have been monumented by the Bureau of Land Management, Jackson County Surveyor and private surveyors.

PROCEDURE: Recovered control points which were set in the course of executing a survey for Lumber Mills Corporation of California and recorded as Survey No. 6505 in the office of the Jackson County Surveyor. From these found control points initiated additional control traverses to all areas where section corners were to be tied or looked for. These traverses were computed and the closures were found to be satisfactory. Computed locations for the 1/4 section corners common to Sections 21 and 22, 16 and 21 and the section corner common to Sections 15, 16, 21 and 22 were made. After a great deal of time, search and evaluation, the stones as set by M.L. McCall were all recovered. Proceeded to compute the offsets from the random traverse lines to the true section lines and to blaze and monument said lines. Trees were quarter blazed on the U.S. Forest Service side of the section lines and face blazes on the side opposite U.S. Forest Service ownership. Fiberglass posts, with U.S. Forest Service signs No. 54-2 attached, were set to mark the section lines. These fiberglass posts were set at intervals of 300 feet or less. Orange fluorescent ribbon was also placed along the section lines to help mark the true boundary lines.

CORNERS FOUND AND RE-MONUMENTED

1/4 SECTION CORNER common to Sections 21 and 22, Township 38 South, Range 4 East

At the corner point found a 6 inch by 12 inch by 16 inch Granite Stone with 1/4 chiseled thereon. Found a 1 inch B.I. Pipe South-westerly and along side of said stone. No original bearing trees in evidence.

At the location of said found stone, set a 30 inch long, 2 inch diameter galvanized iron pipe, 25 inches in the ground, with 2 1/2 inch diameter bronze cap marked:

T. 38S. R. 4E.
1/4 S21 | S22
PLS 759

deposited found stone and B.I. pipe along side and built mound of stones around 1/4 section corner from which:

NEW BEARING TREES:

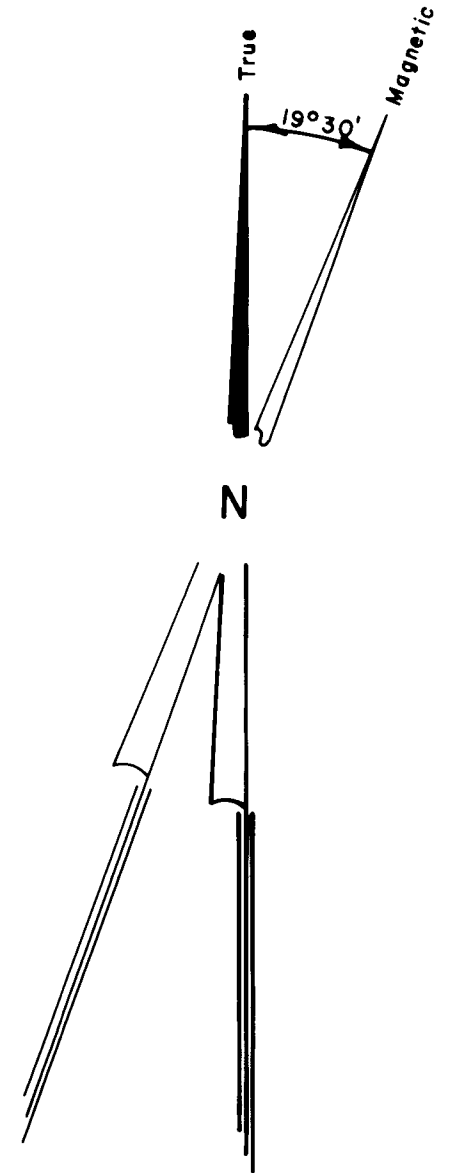
match line

SECTION 16

SECTION 15

SEC. 16 PRIVATE LAND

SEC. 15 U.S. (U.S.F.S.)



SECTION CORNER
Fd. 2" G.I. Pipe
w/3 1/4" Br. Cap
set by BLM
4 BT's: scribed 1 new BT

1/4 SECTION CORNER
Fd. 2" G.I. Pipe
w/3" Br. Cap
set on R.S. No. 6505
4 BT's

1/4 SECTION CORNER
Fd. 2" i.d. G.I. Pipe
w/3 1/4" Br. Cap
set by BLM
4 BT'S

1/4 SECTION CORNER
Fd. 6"x12"x12" Granite Stone
replaced with a 2" G.I. Pipe
w/2 1/2" Br. Cap & scribed
2 BT's

SECTION CORNER
Fd. 6"x11"x13" Basalt Stone
replaced with a 2" G.I. Pipe
w/2 1/2" Br. Cap & scribed
4 BT's

SECTION CORNER
Fd. 1 1/2" G.I. Pipe
w/2 1/2" Br. Cap
set by U.S. General Land Office
1917 5 BT's

NW 1/4 PRIVATE LAND

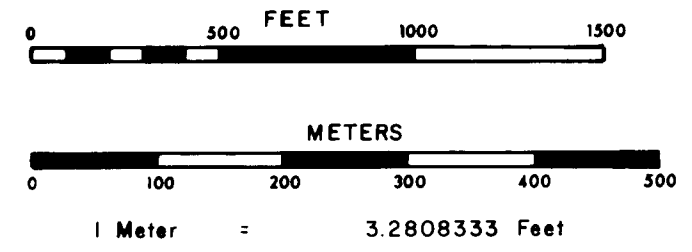
NE 1/4 PRIVATE LAND

LEGEND:

Basis of Bearing: Recorded Survey No. 6505

- Found monuments as shown
- Government Corner found and re-established this survey

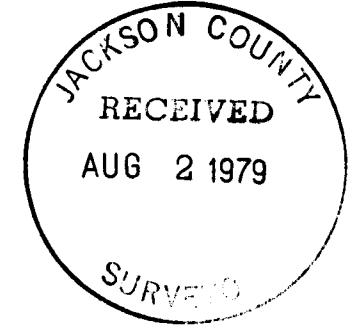
- Section line established and posted this survey
- Section line calculated from traverse survey



SECTION 21

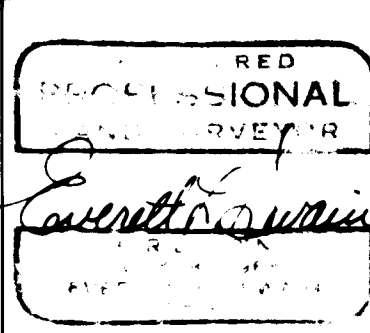
SECTION 22

PRIVATE LAND



APPROVED: *[Signature]* P.L.S. 8-2-79
U.S. Forest Service C.O.R. Date

SECTION CORNER
Fd. 1" G.I. Pipe
w/2 3/8" Metal Cap
set by County Surveyor 1956
5 BT's



SWAIN SURVEYING, INC.
27 1/2 North Main Street Ashland, Oregon

DEPENDENT RESURVEY
SEC. 10, 15, 16, 21 & 22, TWP. 38 S., R. 4 E.W.M.
JACKSON COUNTY OREGON

Surveyed For: ROGUE RIVER NATIONAL FOREST Medford, Oregon
Scale: 1" = 500' July 30, 1979

TWP. 38 S., R. 4 E.W.M.