

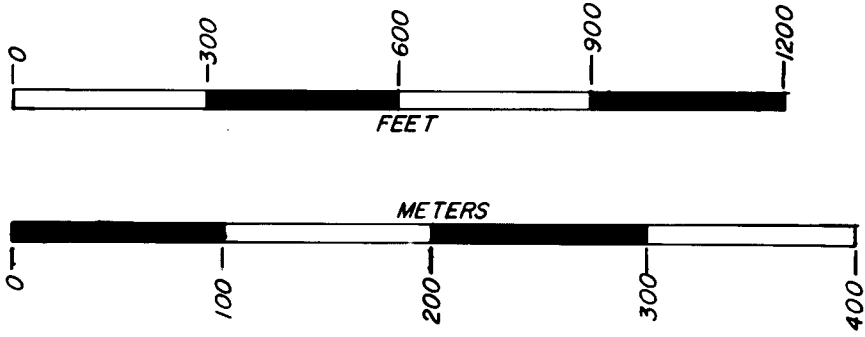
MAP OF SURVEY

Located in Sections 1 and 12, T33S, R3E and Section 36, T32S, R3E, of the Willamette Meridian, Jackson County, Oregon.

for THE U.S. FOREST SERVICE

Ref. Contract Number 53-04HI-9-7338N

THE ORIGINAL SURVEY OF THOSE SECTION LINES SHOWN ON THIS PLAT WERE ORIGINALLY RUN BY RUFUS MOORE IN 1883. THE FRACTIONAL SECTION LINES WITHIN SECTION 1 WERE APPARENTLY RUN BY SOMEONE EMPLOYED BY THE ELK LUMBER CO. IN 1967, SEE NARRATIVE FOR TIES TO 1967 MONUMENTS.

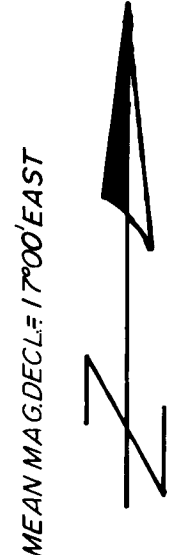
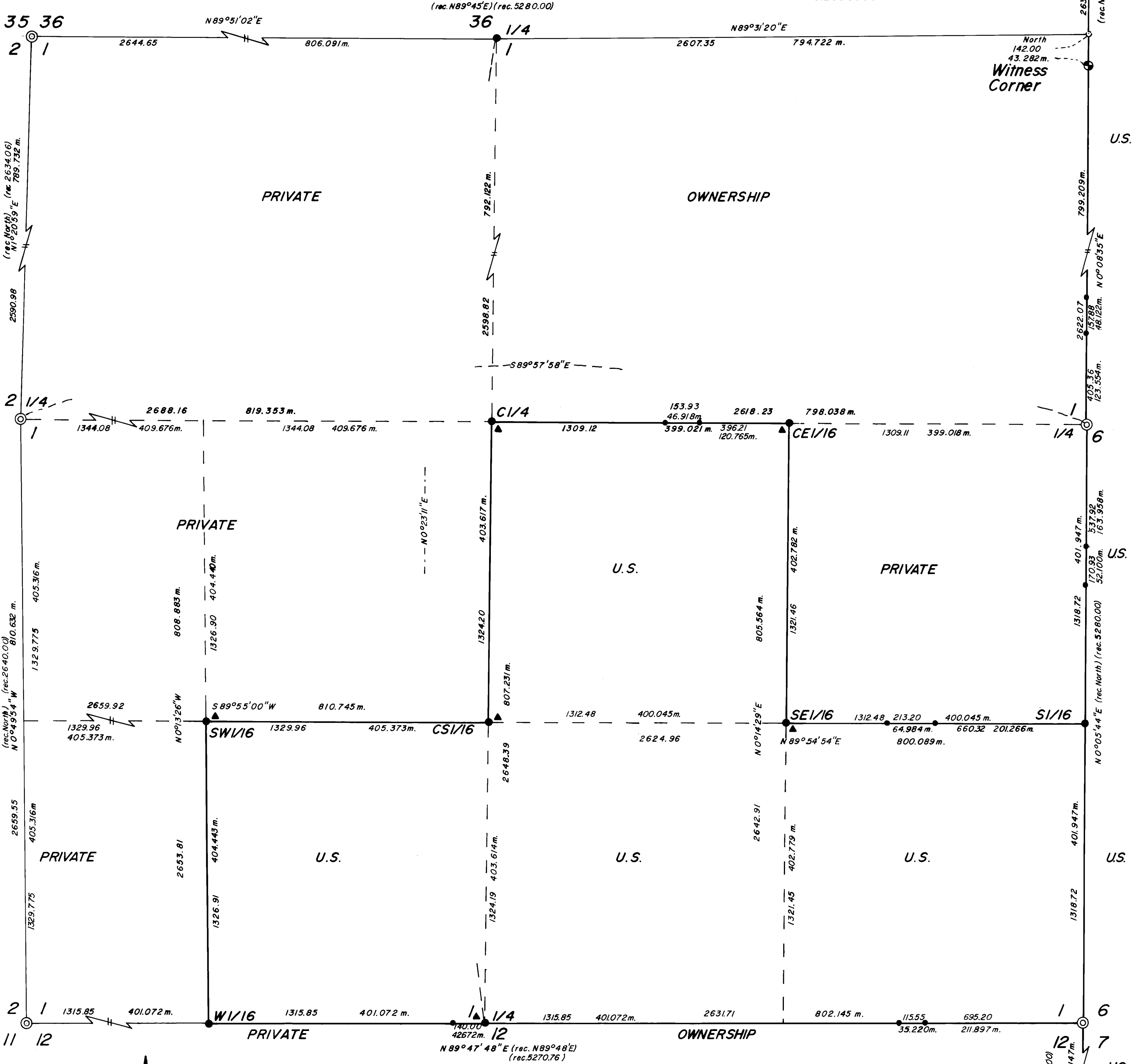


BASIS OF BEARING: SOLAR OBSERVATION

- FD. BLM BRASS CAP AS SHOWN
FD. JACK. CO. BRASS CAP AS SHOWN
SET 2" x 30" G.I.P. w/A 2 1/2" BRASS CAP MKD. AS PER THE BLM MANUAL OF INSTRUCTIONS.
SET 5/8" I.P. w/A ALUMINUM CAP

REF.: FIELD BOOK NO. 1 OF 1, NORTH DANIEL CADASTRAL SURVEY, CONTRACT NO. 53-04HI-9-7338N.

SCALE: 1"=300'
DATE: Survey began May 15, 1979 - completed June 25, 1979
1 METER = 3.2808333 FT.



Examined and Accepted for the U.S. FOREST SERVICE this 7th day of July 1979. [Signature]

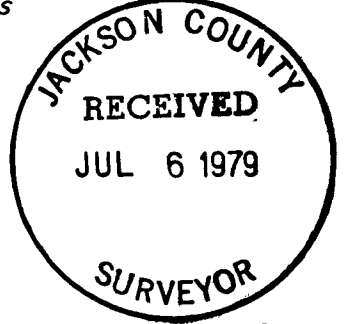
NOTE: MONUMENTS FD. SEE NARRATIVE.

REGISTERED PROFESSIONAL LAND SURVEYOR Kurt C. Weaver OREGON JULY 14, 1978 KURT C. WEAVER 1679

CONTRACT SURVEYOR'S CERTIFICATE:

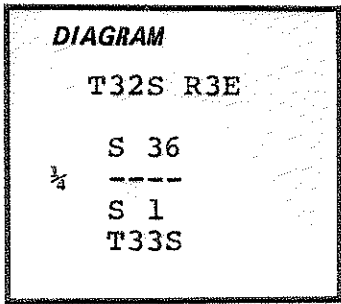
I, Kurt C. Weaver, a registered professional land surveyor in the State of Oregon, hereby certify that this plat and the notes hereon, or attached, are a correct representation of a survey performed by me or under my direction during May and June, 1979 for the U.S. Forest Service, in accordance with the statutes of the State of Oregon and with the articles of my contract.

[Signature] Kurt C. Weaver Registered professional land surveyor, Oregon license 1679



T33, R3E, SEC 1 & 12 T32, R3E, SEC. 36

History of original corner establishment: The corner was established in 1883 by Rufus Moore as follows: Set a post 3 feet long 3" square, 24" in the ground for 1/4 Sec. cor.; marked 1/4 S on the North face, from which



A fir 26" dia. bears North 29 links dist. marked 1/4 S BT.

A pine 30" dia. Bears South 25 East 85 links dist. marked 1/4 S BT.

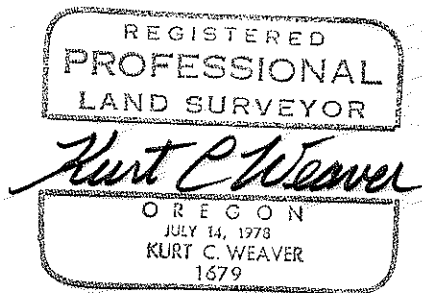
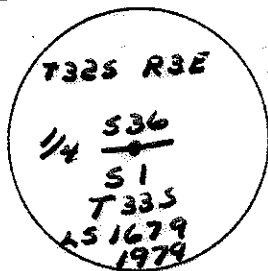
Description of corner evidence found: I found a pine stump approximately 42" dia. badly decayed and burnt. In said stump I found an old axe face with heal over at 15" from the apparent center of the stump. This face had been opened and had rehealed. From the appearance of the stump and the condition of the accompanying log it was obvious that the tree had been down for several years. The proportion position of this corner bears N 68 20'33" West 20.11 feet. Utilizing this stump I re-establish the corner position from the record brg. and dist. From this position I chained East and found the creek call to fit within 10 lks. The original Fir could not be located as it fell in a cat work area.

Description of monument and accessories I established to perpetuate the original location of this corner:

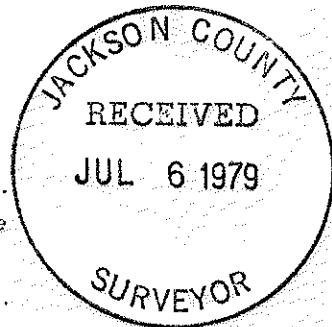
I set a 2" dia. x 30" G.I.P. with a 2 1/2" dia. brass cap exposed 4" at the record position from the found stump, mark the following new bearing trees and take measurements to the center of tree at the lower blaze:

A D.Fir 9" dia. bears S 11 36' W 29.5 ft.
A D. Fir 13" dia. bears N 55 17'E 23.1 ft.

I mark the brass cap



I certify that the above corner monument was re-established as herein described on June 5, 1979.



Office of... Surveyor... County of... Jackson... State of... Oregon... I hereby certify that the within instrument was filed in this office for record on the 6th day of July 1979 by Edward A. McGinty (COUNTY OFFICIAL) and [Signature] (DEPUTY)

S 1/16 section 1, T33S, R3E and Section 6, T33S, R4E
 I set a 2"x30" G.I.P. with a 2 1/2" brass cap
 exposed 7" from which I mark:
 A D. Fir 8" dia. bears S8°25'W 7.6 ft.
 A D. Fir 8" dia. bears S 71°04'E 19.6 ft.

S E 1/16 Section 1, I set a 2'x30" G.I.P. with a
 2 1/2" brass cap exposed 5" from which I mark:
 A D. Fir 8" dia. bears S 19°30'W 20.9 ft.
 A D. Fir 10" dia. bears N 88°52'E 8.2 ft.
 Fd 1" pipe with 1 1/2" expander filled with pot
 metal mark:
 SE 1/16 Sl 1967 bears N 25°45'25" W 6.78 ft.

C E 1/16 Section 1, I set a 2"x30" G.I.P. with a
 2 1/2" brass cap exposed 3", from which I mark:
 A D. Fir 8" dia. bears S 69°25'E 17.7 ft.
 A Hemlock 7" dia. bears S 16°54'W 35.5 ft.
 A 1" pipe with a pot metal expander mark
 CE 1/16 Sl 1967 bears N 80°02'38"W 7.14 ft.

C 1/4 Section 1, I set a 2'x30" G.I.P. with a
 2 1/2" brass cap flush from which I mark:
 A Hemlock 10" dia. bears N34°02'E 20.9 ft.
 A Hemlock 9" dia. bears S 13°56'E 25.5 ft.
 A 1" pipe with a 1 1/2" pot metal expander
 marked c 1/4 Sl 1967 bears N 89°00'08"W 11.14 ft.

C S 1/16 Section 1, I set a 2"x30" G.I.P. with a
 2 1/2" brass cap exposed 13" in a mound of
 stone in Daniel Creek, from which I mark:
 A Yew 11" dia. bears N 17°34'E 21.2 ft.
 A Hemlock 10" dia. bears S 64°22'E 21.8 ft.
 A 1" pipe with a 1 1/2" pot metal filled expander
 marked CS 1/16 Sl 1967 bears South 86°20'59"W
 4.89 ft.

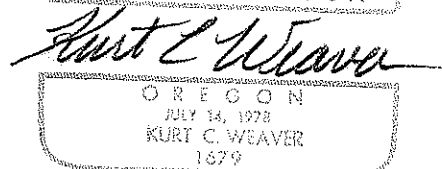
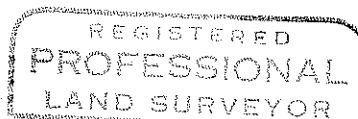
S W 1/16 Section 1, I set a 2"x30" G.I.P with a
 2 1/2" brass cap exposed 6 1/2" from which I
 mark:
 A W. Fir 6" dia. bears S 19°07'E 10.4 ft.
 Cedar 12" dia. bears N 78°49'E 39.6 ft.
 A 1" pipe with a 1 1/2" pot metal filled expander
 marked SW 1/16 Sl 1967 bears S 49°16'09"W 2.96 ft.

W 1/16 Sections 1 and 12, I set a 2"x30" G.I.P. with
 a 2 1/2" brass cap exposed 1/2" from which I mark:
 A W. Fir 15" dia. bears N 41°23'E 28.3 ft.
 A D. Fir 10" dia. bears S 41°15'E 12.4 ft.

All bearings and distances to bearing trees were
 taken to the center of tree at lower blaze.

Surveyed by: T. Flatebo and Associates
 P.O. Box 900
 Jacksonville, Oregon 97530

Date: Survey commenced May 15, 1979, completed
 June 25, 1979.



A W. Fir 11" dia. bears N 75°19'E 18.0 ft.
 (rec. 79°E 17.8 ft.)
 A. D. Fir Stump 54" dia. bears N 79°56' E 41.8 Ft.
 (rec. N 79°E 40.3 ft.)
 A hemlock stump 27" dia. bears S 65°35'E 50.8 ft.
 (rec. S 67°E 45.5 ft.)
 An Alder 13" dia. bears S 61°14"E 35.7 ft.
 (rec. S 58°E 35.7 ft.)
 A Hemlock 17" dia. bears S 22°37'W 29.0 ft.
 (rec. S 26 1/4°W 29.1 ft.)
 an Alder snag 14" dia. bears S 24°45'W 30.1 ft.
 (rec. S 22°W 29.7 ft.)

 1/4 Corner Sec. 36, T32S, R3E and Sec. 31, T32S, R4E
 Found standard BLM pipe and B.C. from which:
 A W. Fir 14" dia. bears S 32°50'W 53.8 ft.
 (rec. S33W 53.5 ft.)
 A D. Fir 11" dia. bears N 31°30'E 12.6 ft.
 (rec. N 40°E 17.8 ft.)
 A D. Fir stump shell 38" dia. bears S79°E 28.2 ft.
 (rec. S75E 27.1 ft.)

 Section corner common to Sec 12 & 13, T33S, R3E and
 sections 7 & 18 T33S, R4E, found standard BLM
 pipe and B.C. exposed 4 1/2" with a 2 " dia.
 iron rod mark Medco, Northwesterly .3 ft. from
 said BLM B.C.:
 A Yew 6" dia. bears N 78°52'E 30.3 ft.
 (rec. N 77° E 30.4 ft.)
 A Yew 6" dia. bears S 50°31'E 32.1 ft.
 (rec. S 54°E 31.7 ft.)
 A Hemlock stump 16" dia. bears S 4°44'E 12.5 ft.
 (rec. S 2°W 12.5 ft.)
 A Dead and down D. Fir 25" dia. bears S 42°15'W
 20.0 ft. (rec. S 58°W 19.8 ft.)
 A Hemlock 12" dia. bears N 22°19'W 6.8 ft.
 (rec. N 16°W 6.6 ft.)

I mark a Chinguapin 14" dia. bears S 36°30'W
 43.7 ft. T33S, R3E, S13 BT.

 1/4 corner of sections 1 and 12, T33S, R3E
 At proportionate position, after a thorough
 search for the original BT's I set a 2"x30"
 G.I.P. with a 2 1/2" brass cap from which I
 mark:
 A Hemlock 8" dia. bears N 16°02'E 29.7 ft.
 A Hemlock 6 " dia. bears S 53°48'E 14.9 ft.
 A 1" pipe with a 1 1/2" pot metal filled expander
 marked T33S, R3E, 1/4S1 - S 12 1967 bears N 3°43'
 17"E 1.41 ft.

 1/4 corner common to Section 12, T33S, R3E and
 Section 7, T33S, R4E, at proportionate position,
 after a thorough search (area has been severely
 disturbed by tractors) I set a 2"x30" GIP with
 a 2 1/2" brass cap exposed 2 1/2" from which I
 mark:
 A W. Fir 9" dia. bears N 48°49'W 28.2 ft.
 A W. Fir 7" dia. bears N 69°10'E 32.0 ft.

1/4 corner S 1, T33S, R3E and S 6, T33S, R4E

Found Standard BLM pipe and brass cap
exposed 9" from which A D. Fir stump 25"
dia. bears S 55°31'W 12.5 ft. (rec. S 54°W 13.2 ft.)
A W. Fir 19" dia. bears N 86°41'W 42.7 ft.
(rec. N 86°W 42.9 ft.)
A D. Fir 20" dia. bears N 25°05'E 31.9 ft.
(rec. N 26°E 32.3 ft.)

Sec. Cor. S 1 & S 12, T33S, R3E - S 6 & S 7, T33S, R4E

Found Standard BLM pipe and B.C. from which:
A D. Fir 11" dia. bears N 44°44'W 25.3 ft.
(rec. N 45°W 25.1 ft.)
A D. Fir 8" dia. bears N 42°34'W 15.1 ft.
(rec. N 44°W 15.2 ft.)
A W. Fir 8" dia. bears N 19°32'E 24.2 ft.
(rec. N 20°E 23.8 ft.)
A W. Fir 13" dia. bears N 53°27' E 29.2 ft.
(rec. N 54°E 29.0 ft.)
A W. Fir 9" dia. bears S 82°46'E 13.6 ft.
(rec. S 83°E 13.9 ft.)
A D. Fir 9" dia. bears S 57°32' E 7.0 ft.
(rec. S 55°E 7.3 ft.)
A dead and down Fir snag bears S 42°49'E 10.9 ft.
(rec. S 40°E 11.2 ft.)
A W. Fir 9" dia. bears S 46°23'W 40.4 ft.
(rec. S 45°W 40.3 ft.)
A D. Fir 9" dia. bears S 60°49'W 13.4 ft.
(rec. S 60° W 13.9 ft.)

Sec. Cor. 1, 2, 11 & 12, Found Standard BLM pipe
and B.C. from which:

A D. Fir 11" dia. bears S 52°23'E 77.2 ft.
(rec. S 52°E 77.9 ft.)
A D. Fir 9" dia. bears S 24°41'W 24.2 ft.
(rec. S 26°W 24.4 ft.)
A D. Fir 17" dia. bears N 19°45'W 46.7 ft.
(rec. N 18°W 47.5 ft.)
A W. Fir 14" dia. bears N 12°23'E 25.7 ft.
(rec N 14°E 26.4 ft.)

1/4 Corner S 1 and 2; Found Standard BLM pipe and
B.C. from which:

A Hemlock 11" dia. bears N 69°32'W 8.1 ft.
(rec. S 74°W 7.9 ft.)
A Twin Chinquapin 9" dia. bears S 44°54'E 56.9 ft.
with scribe mark vis. (rec. S 44°E 56.8 ft.)
A ~~W~~ Fir 9" dia. bears S 22°37'W 8.9 ft.
(rec. D. Fir S 26°W 8.6 ft.)
A D. Fir stump 34" dia. bears S 42°50'W 29.0 ft.
BT visible in open blaze (rec. S.46°W 28.4 ft.)

Sec. Cor.: S 1 & 2, T33S, R3E and S 35 & 36, T32S, R3E

Found a standard BLM pipe and B.C. from which:
A D. Fir stump 26" dia. bears N 65°42'W 17.5 ft.
(rec. N 66°W 17.2 ft.)
A D. Fir 22" dia. bears N 45°00'W 20.2 ft.
(rec. N 34 3/4 °W 20.6 ft.)
A D. Fir 12" dia. bears N 21°22'W 18.1 ft.
(rec. N 17°W 18.5 ft.)
A D. Fir 14" dia. bears N 19°18'E 7.5 ft.
(rec. N 17 3/4°E 7.0 ft.)

SURVEY NARRATIVE TO COMPLY WITH O.R.S. 209.250

Survey for: U.S. Forest Service
Rogue River National Forest
P O Box 520
Medford, Oregon 97501

Location: Located in Sections 1 and 12, Township 33 South,
Range 3 East and Section 36, Township 32 South,
Range 3 East of the Willamette Meridian, Jackson
County, Oregon.

Purpose: To monument the SE, SW and NW 1/4's of the SE 1/4
and the SE 1/4 of the SW 1/4 of Section 1 and mark
the lines with posts and blazing as shown on the
accompanying map. I also mark the North half of
the East line of Section 1, the East line of Section
12 and the South half of the East line of Section
36, T32S, R3E.

Procedure: Utilizing a closed traverse or a series of closed
traverses I tied all of the controlling corners.
I subdivided Section 1 and determined the position
of the C 1/4 corner and the 1/16 corners required
to monument.

At the North one quarter corner of Section 1, I found
a pine stump with healed over axe work, from which
I set the corner at record bearing and distance.
From this corner location the proportionate position
bears N 68°20'33"W 20.11 feet. I chained East to
the creek and found the call to fit within 10 links
of record. No trace of the original Fir could be
found as the area of its position had been altered
by tractor work.

I set a 2" G.I.P. with a 2 1/2" brass cap and mark;
a D. Fir 9" dia. bears S11°36'W 29.5 ft.
a DD. Fir 13" dia. bears N55°17'E 23.1 ft.

I found or set the following corners:
Sec. Cor. 36 T32S R3E, Sec. 31 T32S R4E,
Sec. 1 T33S R3E, Sec. 6 T33S R4E
Witness Corner: Found a 1" G.I.P. w/2" B.C.
exposed 2" mkd:
T32-33S R3-4E
TWP Cor
142N WC
TWP COR
CS 1960

from which:

A D. Fir 5" dia. bears S 70°33'W, 14.6 ft.
(rec. S 68 1/2°W 14.65)
A dead and down W. Fir 3" dia. bears N 30°47"W
13.5 ft.
(rec. N 33 1/2°W 13.7)
A Hemlock 10" dia. bears N 55°20'E 39.7 ft.
(rec. N 52 3/4° E 49.6)
A Hemlock 23" dia. bears S 66°16'E 26.7 ft.
(rec. S 69°E 26.3)

I mark a new tree:

A Hemlock 17" dia. bears N 14°30'W 29.3 ft.
marked X BT.