

79-12958

GEMINI ESTATES SUBDIVISION

IN THE CITY OF PHOENIX, OREGON

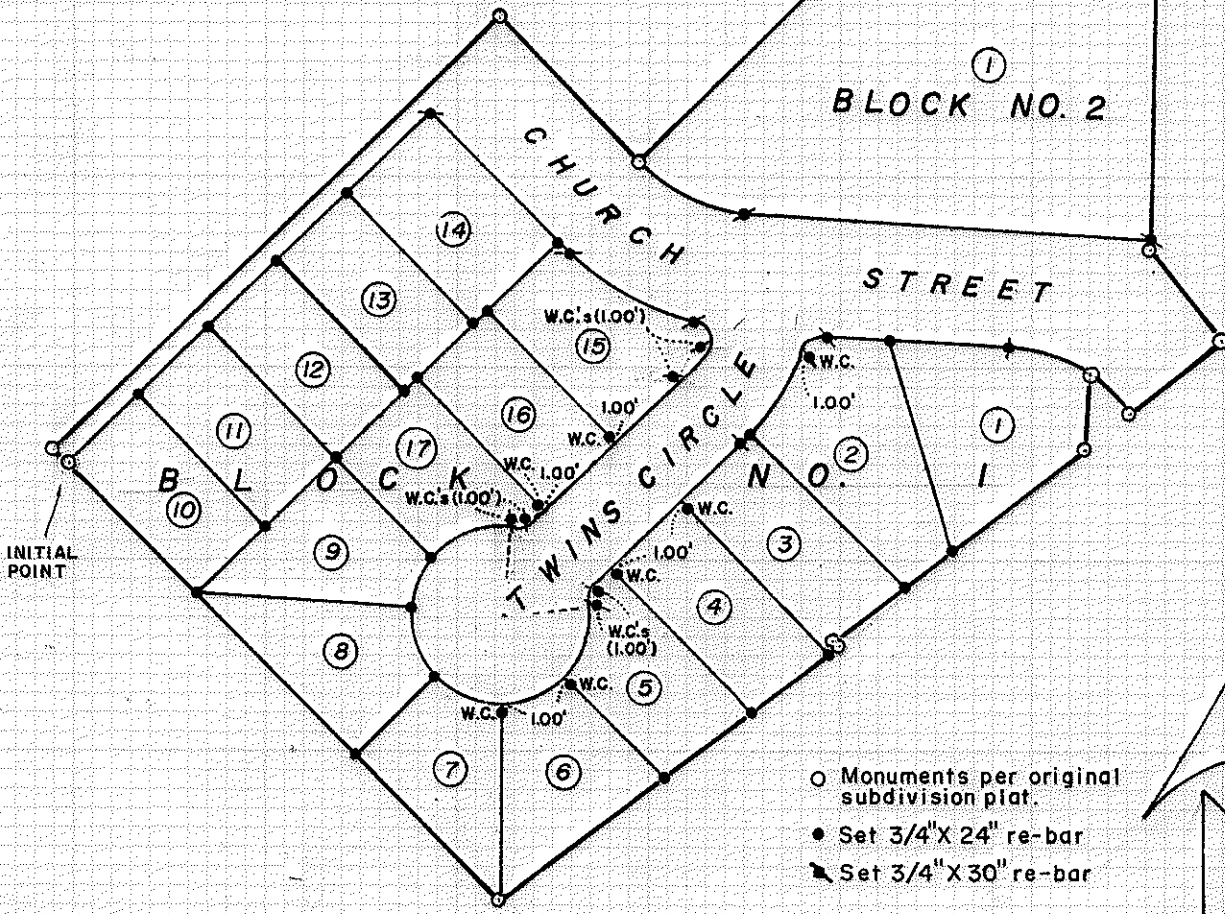
LOCATED IN THE S.E. 1/4 OF SECTION 9, T.38S., R.1W., W.M.
JACKSON COUNTY, OREGON

POST MONUMENTATION MAP

JUNE 21, 1979

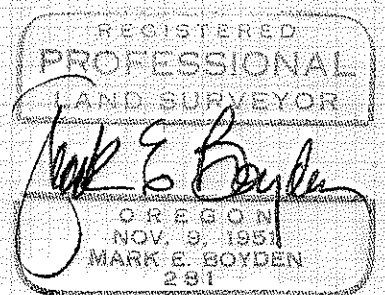
12:00
300

2882



NOTE: See plat of GEMINI ESTATES SUBDIVISION filed for record the 2nd day of August, 1978, at 10:29 o'clock A.M. and recorded in volume 13 of plats at page 47 of records of Jackson County, Oregon for dimensions.

I, MARK E. BOYDEN, DULY REGISTERED SURVEYOR OF THE STATE OF OREGON, DO HEREBY CERTIFY THAT THIS MAP REPRESENTS A SURVEY MADE BY ME OR UNDER MY DIRECTION AND THE MONUMENTS CONFORM TO O.R.S. 92.060.



Examined and approved this 25th day of June, 1979.

Walter J. Marquess
City Engineer

Filed for record this 25 day of June, 1979 at 12:00 o'clock P. M. and recorded in the official records of Jackson County, Oregon

Waldene Perry
COUNTY CLERK

Marsha Baker
DEPUTY

2882

38 1W 9 DB