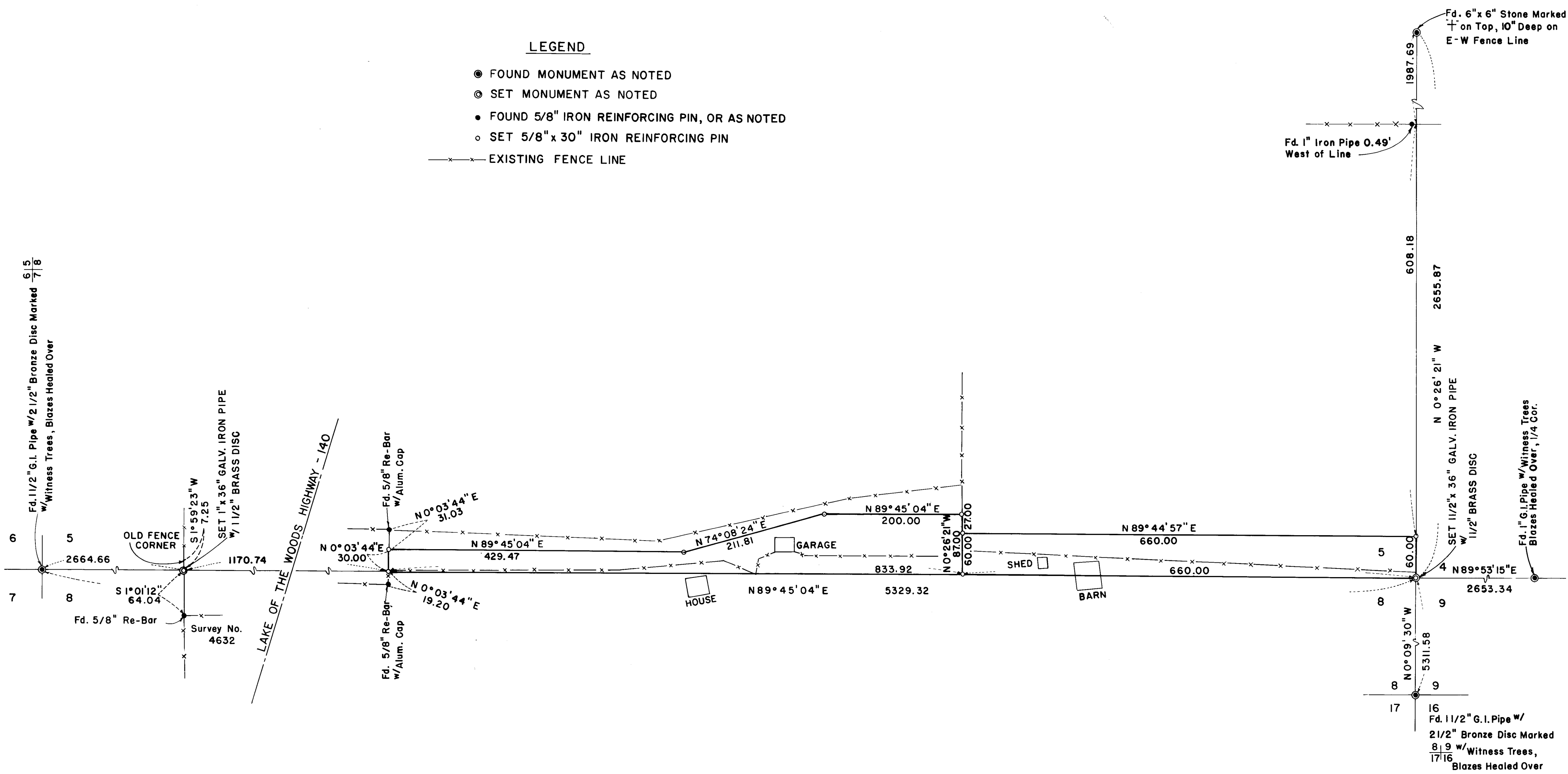


LEGEND

- FOUND MONUMENT AS NOTED
- ⊙ SET MONUMENT AS NOTED
- FOUND 5/8" IRON REINFORCING PIN, OR AS NOTED
- SET 5/8" x 30" IRON REINFORCING PIN
- x—x—x— EXISTING FENCE LINE

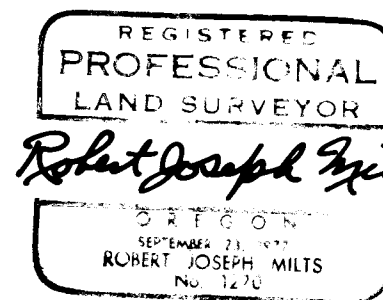
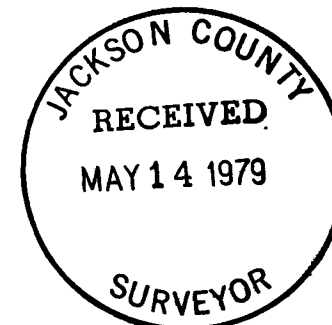
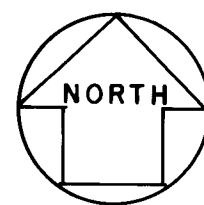


MAP OF SURVEY
 LOCATED IN
 S.E. 1/4 OF SECTION 5, T36S, R1E, WM
 JACKSON COUNTY, OREGON

FOR
JACK BATZER

R.J.MILTS, REG. L.S., MARQUSS & ASSOC., MEDFORD, OREGON
 SCALE: 1"=100' APRIL, 1979
 BASIS OF BEARING - RECORDED SURVEY NO. 4632

MARQUSS & ASSOCIATES, INC.
 CONSULTING ENGINEERS
 1120 EAST JACKSON STREET - P.O. BOX 490
 MEDFORD, OREGON 772-7115



7826

A 16" black oak scribed "S 5-RS 1270 BT" bears N. 88° W. 129.7 feet to the face of the lower blaze.

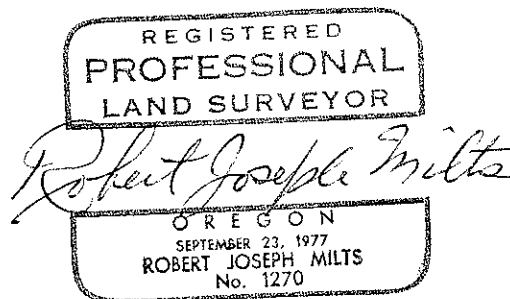
An 8" black oak scribed "S 8-RS 1270 BT" bears S. 28° E. 72.9 feet to the face of the lower blaze.

From said data, the property was monumented as shown on the map to accompany this report.

The section corner for Sections 4, 5, 8, 9 as set agrees with the location shown for this corner by Harold Shockley, previous land owner.

EQUIPMENT: 5 second the theodolite (TIA), an electronic measuring instrument, and chain.

May 8, 1979

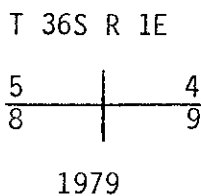


SURVEY NARRATIVE TO COMPLY WITH O. R. S. 209.250

FOR: Jack Batzer
1901 Crestbrook Road
Medford, Oregon

PURPOSE: To monument a portion of Tract E as per stipulation and decree No. 77-1795-L-2

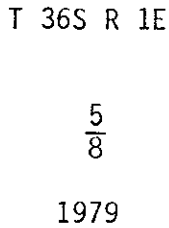
PROCEDURE: 1. Found section corners for Sections 5, 6, 7, 8 and Sections 8, 9, 16, 17 and 1/4 corners on Section Lines 4, 9 and 4, 5. Searched for 1/4 corners on Section Lines 5, 8 and 8, 9 and the section corner for Sections 4, 5, 8, 9, but no trace of corners or witness trees could be found. Located section corner for Sections 4, 5, 8, 9 by method of double proportion, and set a 1 1/2" x 36 galvanized iron pipe 28" in the ground with a 1 1/2" bronze cap stamped:



from which:

An 8" black oak scribed "S 5-RS 1270 BT" bears N 65° W. 10.1 feet to the face of the lower blaze. An 18" black oak scribed "S 4-RS 1270 BT" bears N 45° E 39.7 feet to the face of the lower blaze. A 13" black oak scribed "S 9-RS 1270 BT" bears S 36° E. 83.1 feet to the face of the lower blaze. An 8" black oak scribed "S 8-RS 1270 BT" bears S. 10° W 30.6 feet to the face of the lower blaze.

The 1/4 corner on section line 5, 8 was located by single proportion of distance between section corners 5, 6, 7, 8 and 4, 5, 8, 9 and a 1" x 36" galvanized iron pipe was set 32" into the ground with a 1 1/2" bronze cap stamped:



from which: