

PLANN. APP. NO. 79-36

MINOR LAND PARTITION

LOCATED IN BLK. 6 OF PATTERSON - PHELPS TRACTS IN THE S 1/2 OF SEC. 4, T39S, R1E IN THE CITY OF ASHLAND

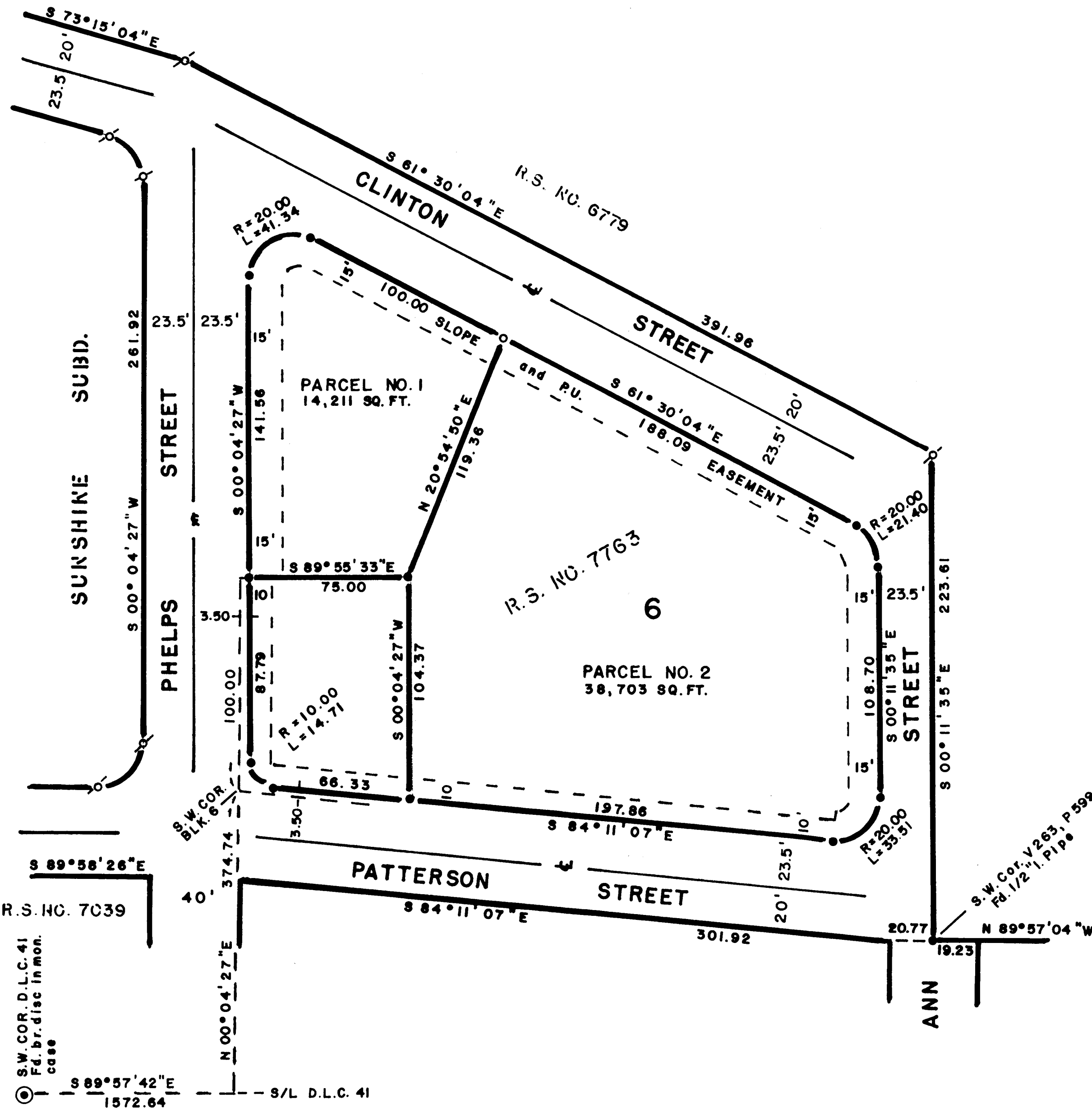
FOR

PAMELA BERWICK & LARRY KATZ
882 GARDEN WAY ASHLAND, ORE.

Filed for record this the 2nd day of May 1979 at 11:45 o'clock AM and recorded in Volume 2 Page 90 of the "MINOR LAND PARTITION" records of Jackson County, Oregon.

William Jerry
County Clerk

Mark Baker
Deputy



SCALE 1" = 40'

Basis of Bearings N.O.A.A. True
(From R.S. 6779)

LEGEND

- = Set 5/8"x24"l. Pin (tagged RLS638)
- = Fd. 5/8"l. Pin (tagged R.L.S.638)
- ⊙ = Fd. 5/8"l. Pin (tagged R.L.S.759)

I certify that pursuant to authority granted to us by the Ashland Planning Commission in open meeting of MARCH 15 1979 this map is hereby approved by the Ashland Planning Commission this 30TH day of APRIL 1979

Lee Shender
President

[Signature]
Secretary

I, George R. Burrell, a duly Registered Professional Land Surveyor of the State of Oregon, hereby certify that this map correctly represents a survey made by me Mar. 15, 1979.

REGISTERED
PROFESSIONAL
LAND SURVEYOR

George Burrell

CREATED
JULY 27 1984
GEORGE R. BURRELL
P.L.S.

