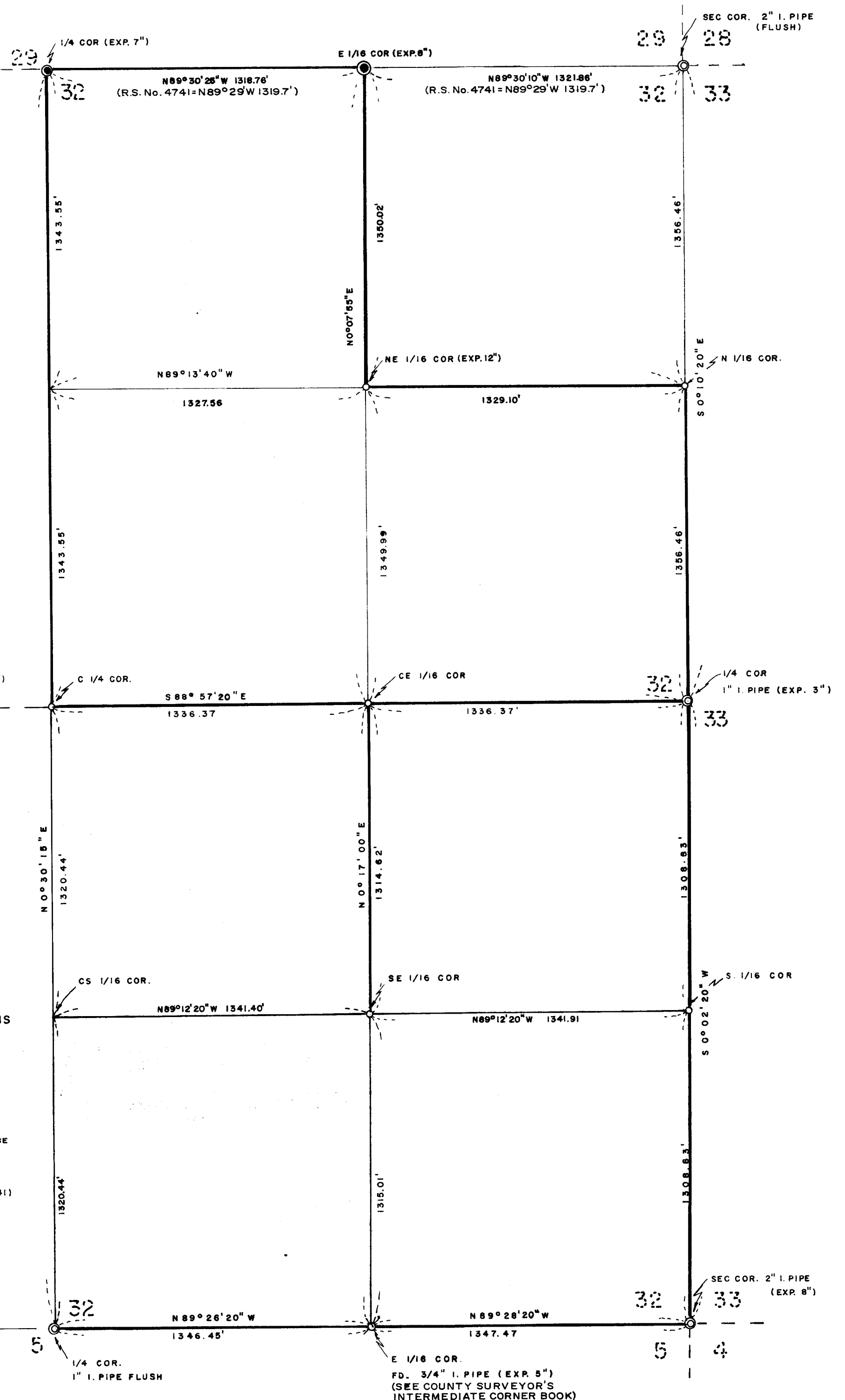
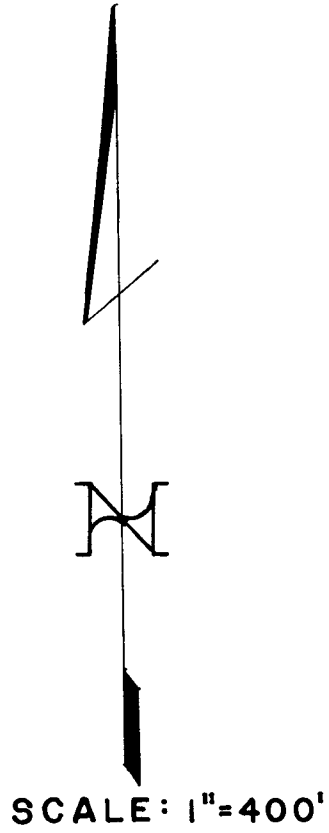


SURVEY FOR:

JOHN M. BLACK and
BOISE CASCADE CORP.

LOCATED IN THE EAST-HALF OF
SEC. 32, T. 37S., R. 3W., W. M.

BY: MARK E. BOYDEN
SURVEY COMMENCED JULY 1976; COMPLETED
APRIL 13, 1979.



BASIS OF BEARINGS:
MEAN OF SIX SOLAR OBSERVATIONS

- ⊙ FD. GOVT. COR. MONUMENTED BY JACKSON COUNTY SURVEYORS OFFICE
- ⊙ FD. 1" GALV. I.P. CAPPED WITH A 1" TO 1/2" POT METAL FILLED REDUCER *
- SET 3/4" X 36" GALV. IRON PIPE WITH 2" BRASS CAP. EXP. 3" UNLESS OTHERWISE INDICATED

* (SEE RECORDED SURVEY NO. 4741)

MARK E. BOYDEN
PROFESSIONAL SURVEYOR

Gary D. Kasper

T37SR3W
T38SR3W

JACKSON COUNTY

APR 13 1979

Survey Narrative for John M. Black and Boise Cascade Corporation
Page Three

A 8" Black Oak scribed "C 1/4 S32-BT" bears N71 3/4°W
12.1 feet to the face of the lower blaze.

A 8" Fir scribed "C 1/4 S32-BT" bears N12 1/4°E,
2.0 feet to the face of the lower blaze.

At the Southeast one-sixteenth corner set a 3/4" x 36"
galvanized iron pipe 33" in the ground with a 2" brass cap
stamped:

SE 1/16 S32

1976

from which;

A 12" Pine scribed "SE 1/16 S32-BT" bears N78 1/4°W,
39.9 feet to the face of the lower blaze.

A 12" Fir scribed "SE 1/16 S32 BT" bears N 1°E,
40.6 feet to the face of the lower blaze.

At the South one-sixteenth corner common to Sections 32
and 33 set a 3/4" x 36" galvanized iron pipe 33" in the ground
with a 2" brass cap stamped:

S 1/16

S32 . S33

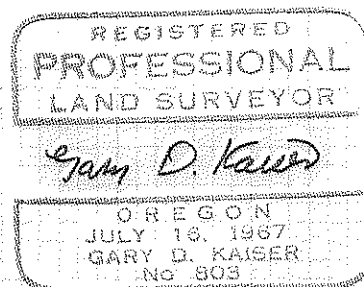
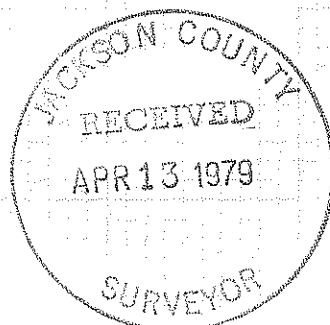
1976

from which:

A 20" Fir scribed "S 1/16 S32-BT" bears N23 3/4°W,
2.0 feet to the face of the lower blaze.

A 16" Fir scribed "S 1/16 S32-BT" bears S61 1/2°W,
35.6 feet to the face of the lower blaze.

April 13, 1979



Survey Narrative for John M. Black and Boise Cascade Corporation
Page Two

At the North one-sixteenth corner common to Sections 32 and 33 set a 3/4" x 36" galvanized iron pipe 33" in the ground with a 2" brass cap stamped:

N 1/16
S32 . S33
1976

from which:

A 6" White Oak scribed "N1/16 S32-BT" bears N63°W,
20.5 feet to the face of the lower blaze.

A 6" White Oak scribed "N 1/16 S33-BT" bears S36 1/2°E,
35.8 feet to the face of the lower blaze.

At the "Center-East" one-sixteenth corner set a 3/4" x 36" galvanized iron pipe 33" in the ground with a 2" brass cap stamped:

E 1/16
C . C
S32
1976

from which:

A 13" Pine scribed "CE 1/16 S32-BT" bears N19°E,
49.9 feet to the face of the lower blaze.

A 16" Laurel scribed "CE 1/16 S32-BT" bears N87 3/4°E,
62.1 feet to the face of the lower blaze.

At the center quarter corner set a 3/4" x 36" galvanized iron pipe 33" in the ground with a 2" brass cap stamped:

T37SR3W
C 1/4 . S32
1976

from which:

Survey No. 7772

SURVEY NARRATIVE TO COMPLY WITH O.R.S. 209,250

FOR: John M. Black Boise Cascade Corporation
4513 Forest Creek Road North Pacific Highway
Jacksonville, Oregon Medford, Oregon

PURPOSE: To monument section subdivision corners in Section
32, T37SR3W.

PROCEDURE: Utilizing E.D.M. equipment, one-second theodolite
and chain, ties were made to Government Corners re-established by
the county surveyor, a one-sixteenth corner of recorded in the
County Surveyor's Intermediate Corner Book, government corners
monumented on Recorded Survey No. 4741 and a one-sixteenth corner
monumented on Recorded Survey No. 4741, as shown on the annexed map.

Corners monumented on this survey as shown on the annexed
map are referenced as follows:

At the "Northeast" one-sixteenth corner set 3/4" x 36"
galvanized iron pipe 24" in the ground with a 2" brass cap stamped:

NE
1/16 S32
1976

from which:

A 8" Black Oak scribed "NE 1/16 S32-BT" bears North
87 1/2°W, 2.3 feet to the face of the lower blaze.

A 6" Black Oak scribed "NE 1/16 S32-BT" bears North
10 1/2°W, 15.6 feet to the face of the lower blaze.