

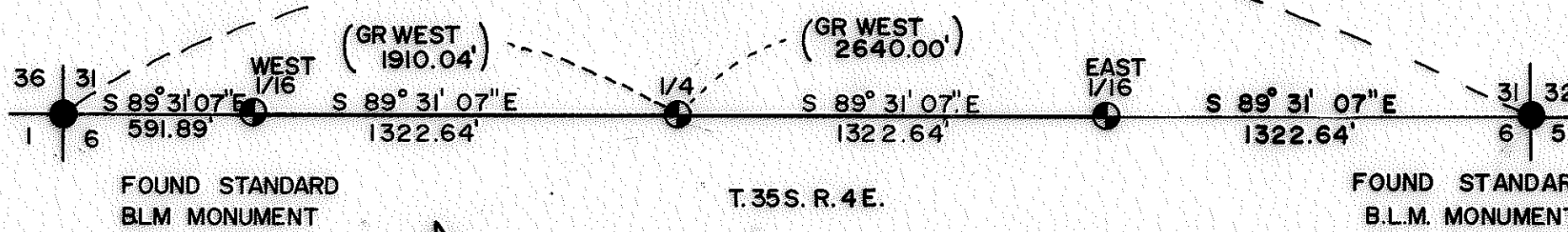
7747

T. 34 S. R. 4 E.

SURVEY NO. 7747

T. 34 S. R. 3 E.

S 89° 31' 07" E  
4559.81'



T. 35 S. R. 3 E.

FOUND STANDARD  
BLM MONUMENT

T. 35 S. R. 4 E.

FOUND STANDARD  
B.L.M. MONUMENT

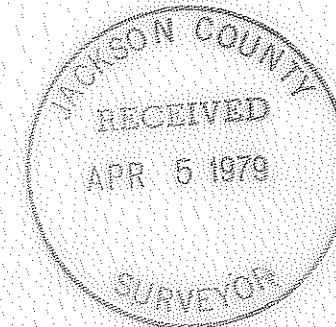


SCALE 0 250 500 750 1000 FEET

BASIS OF BEARING — SOLAR OBSERVATION

LEGEND

- FOUND STANDARD B.L.M. MONUMENT
- ⊙ MONUMENT SET BY SURVEY
- GR GOVERNMENT RECORD



MAP OF SURVEY  
 LOCATED IN  
 SEC. 6, T. 35 S., R. 4 E., W.M.  
 JACKSON COUNTY OREGON  
 FOR

**ROGUE RIVER NATIONAL FOREST**  
 MARCH 6, 1979

CERTIFICATE OF SURVEY

I, HAROLD L. CENTER REGISTRATION NO. 1071  
 REGISTERED PROFESSIONAL LAND SURVEYOR  
 STATE OF OREGON, HEREBY CERTIFY THAT  
 THIS MAP CORRECTLY REPRESENTS A SURVEY  
 MADE BY ME OR UNDER MY DIRECTION IN  
 CONFORMANCE WITH THE LAWS OF THE STATE  
 OF OREGON, AT THE REQUEST OF THE U.S.  
 FOREST SERVICE

REGISTERED  
**PROFESSIONAL**  
 LAND SURVEYOR

*Harold L. Center*  
 OREGON  
 HAROLD L. CENTER  
 JULY 30, 1976  
 No. 1071

34 & 35 - 3E

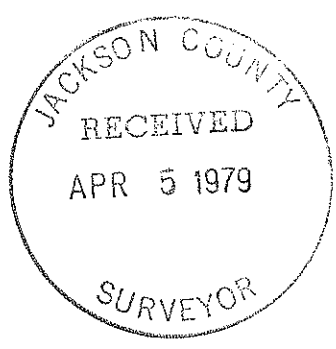
7747

From which the following references:

A 20-inch diameter Douglas-fir bears S 67° 17' W 36.00 feet distance.  
Scribed 1/4 S6 LS 1071 BT.

A 9-inch diameter Douglas-fir bears N 37° 33' W 16.80 feet distance.  
Scribed 1/4 S36 LS 1071 BT.

HAROLD L. CENTER  
Registered Professional Land Surveyor  
Oregon Certificate No. 1071



References:

A 13-inch diameter Douglas-fir bears S 89° 40' E 25.00 feet distance.  
Scribed 1/16 S6 LS 1071 BT on a Double Blaze.

A 35-inch diameter pine bears N 2° 14' W 8.20 feet distance. Scribed 1/16  
S31 LS 1071 BT on Double Blaze.

West sixteenth corner common to Section 31, Township 34 South, Range 4 East; and  
Section 6, Township 35 South, Range 4 East, Willamette Meridian.

At the corner position I set a 2 1/2-inch diameter by 2 1/2 feet long galvanized iron  
post with a 2 1/2-inch diameter brass cap marked:

R4E WM  
T34S S31  
-----W1/16  
T35S S6  
LS 1071  
1979

References:

A 14-inch diameter Douglas-fir bears S 61° 59' W 39.50 feet distance.  
Scribed 1/16 S6 LS 1071 BT on a Double Blaze.

A 15-inch diameter Douglas-fir bears N 32° 15' W 12.5 feet distance.  
Scribed 1/16 S31 LS 1071 BT on a Double Blaze.

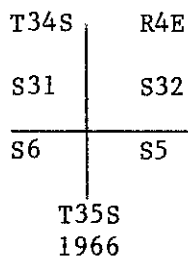
The one-quarter corner common to Section 31, Township 34 South, Range 4 East;  
and Section 6, Township 35 South, Range 4 East; Willamette Meridian.

At the proportioned corner position I set a 2 1/2-inch diameter by 2 1/2 feet long  
galvanized iron post with a 2 1/2-inch diameter brass cap marked:

R4E WM  
T34S  
S31  
1/4 -----  
S6  
T35S  
LS 1071  
1979

At the corner location I found a standard Bureau of Land Management Monument marked:

U. S. Dept. of Interior  
 Bureau of Land Management



Reference:

A fir 11 inches in diameter bears N 65° 07' E 8.20 feet distance with a healed single blaze.

A fir 16 inches in diameter bears S 34° 14' E 34.70 feet distance with a healed single blaze.

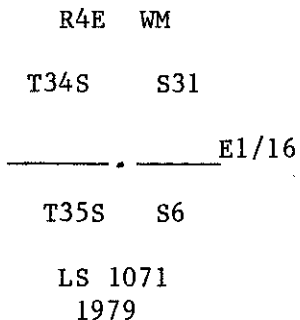
A fir 22 inches in diameter bears S 45° 42' W 8.00 feet distance, top half of BT scribe visible on single blaze.

A cedar 8 inches in diameter bears N 36° 43' W 10.10 feet distance. Scribed T34S R4E S32 BT.

CORNERS ESTABLISHED THIS SURVEY

East sixteenth corner common to Section 31, Township 34 South, Range 4 East; and Section 6, Township 35 South, Range 4 East, Willamette Meridian.

At the corner position I set a 2½-inch diameter by 2½ feet long galvanized iron post with a 2½ inch diameter brass cap marked:

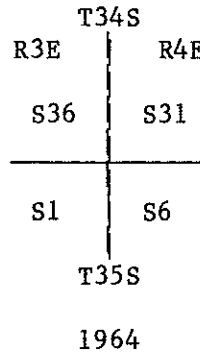


Corners Accepted For Control

Township corner common to Section 36, Township 34 South, Range 3 East; Section 31, Township 34 South, Range 4 East; Section 1, Township 35 South, Range 3 East; and Section 6, Township 35 South, Range 4 East, Willamette Meridian.

At the corner location I found a standard Bureau of Land Management Monument marked:

U. S. Dept. of Interior  
 Bureau of Land Management



References:

A Douglas-fir 12 inches in diameter bears N 26° 33' E 173.60 feet distance with a healed single blaze.

A Douglas-fir 12 inches in diameter bears S 29° 33' E 28.50 feet distance with a single blaze.

A pine snag 48 inches in diameter bears S 38° 09' E 97.30 feet distance. Scribing visible.

A fir 10 inches in diameter bears S 44° 10' W 34.80 feet distance with a healed single blaze.

A Douglas-fir 18 inches in diameter bears N 35° 55' W 16.00 feet distance.

Section corner common to Sections 31 and 32 of Township 34 South, Range 4 East; and Sections 5 and 6 of Township 35 South, Range 4 East, Willamette Meridian.

SURVEY NARRATIVE TO COMPLY WITH  
PARAGRAPH 209.250 OREGON REVISED STATUTES

SURVEY FOR: Rogue River National Forest  
P. O. Box 520  
Medford, OR 97501

LOCATION: Section Line between Section 31, Township 34 South,  
Range 4 East; and Section 6, Township 35 South, Range 4 East,  
Willamette Meridian, Jackson County, Oregon.

BASIS OF BEARING: Solar Observation

PURPOSE: To Monument the section line between Section 31, Township 34  
South, Range 4 East; and Section 6, Township 35 South, Range  
4 East, Willamette Meridian.

PROCEDURE: The North one quarter corner of Section 6 had been searched  
for on several occasions without positive success. Medford  
Resources Corporation personnel had established a temporary  
one quarter corner during the mid 1960's. In a discussion  
with Medford Corporation surveyor Arthur R. Rambo I was  
advised this corner was established by staff compass and  
chain procedures, and that an extensive search for the origi-  
nal corner had been made at that time without positive suc-  
cess.

I then proceeded with my survey from the Northeast section  
corner and ran east to the Northwest corner, closing my sur-  
vey back to the Northeast section corner. Proportional  
corner positions were then computed and searches of the areas  
made in conjunction with deputies from the Jackson County  
Surveyor's office. No evidence of the original corner could  
be recovered.

Ties were made to topographic features along my traverse line  
and were compared to the original record. Although the  
distance between creek calls did compare favorably, other  
comparisons failed to harmoniously agree. I therefore  
elected to reestablish this corner by proportional measure-  
ment, utilizing adjacent found original corners.