

# 7727 MOUNTAIN RANCH SUBDIVISION UNIT No. 3

FOR DECLARATION OF RESTRICTIVE COVENANTS  
SEE O.R. NO. 79-13679

SHEET 2 of 2

TO THE CITY OF ASHLAND

LOCATED IN THE NW 1/4 OF SEC 25 T39S, R12E W1, JACKSON COUNTY, OREGON  
ALSO LOTS 3 & 4, BLK 4 & LOT 1, BLK 3 OF MOUNTAIN RANCH SUBDIVISION UNIT NO. 2, AS NOW RECORDED

REGISTERED  
PROFESSIONAL  
LAND SURVEYOR

*Everett L. Swain*

OREGON  
JULY 6, 1966  
EVERETT L. SWAIN  
759

POST MONUMENTATION MAP

- Monuments per original subdivision plat
- Monuments per original subdivision plat
- ◊ Set 5/8 x 24 inch Iron pin tagged RLS 759 unless otherwise shown
- ⊙ Set 1-1/2 x 18" inch Iron Pipe with Bronze Cap in Monument Case unless otherwise shown

I, Everett L. Swain, duly Registered Surveyor of the State of Oregon, do hereby certify that this map represents a survey made by me or under my direction and the monuments conform to O.R.S. 92.060

Examined and approved this 14 day of Feb 19 79.

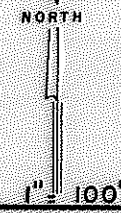
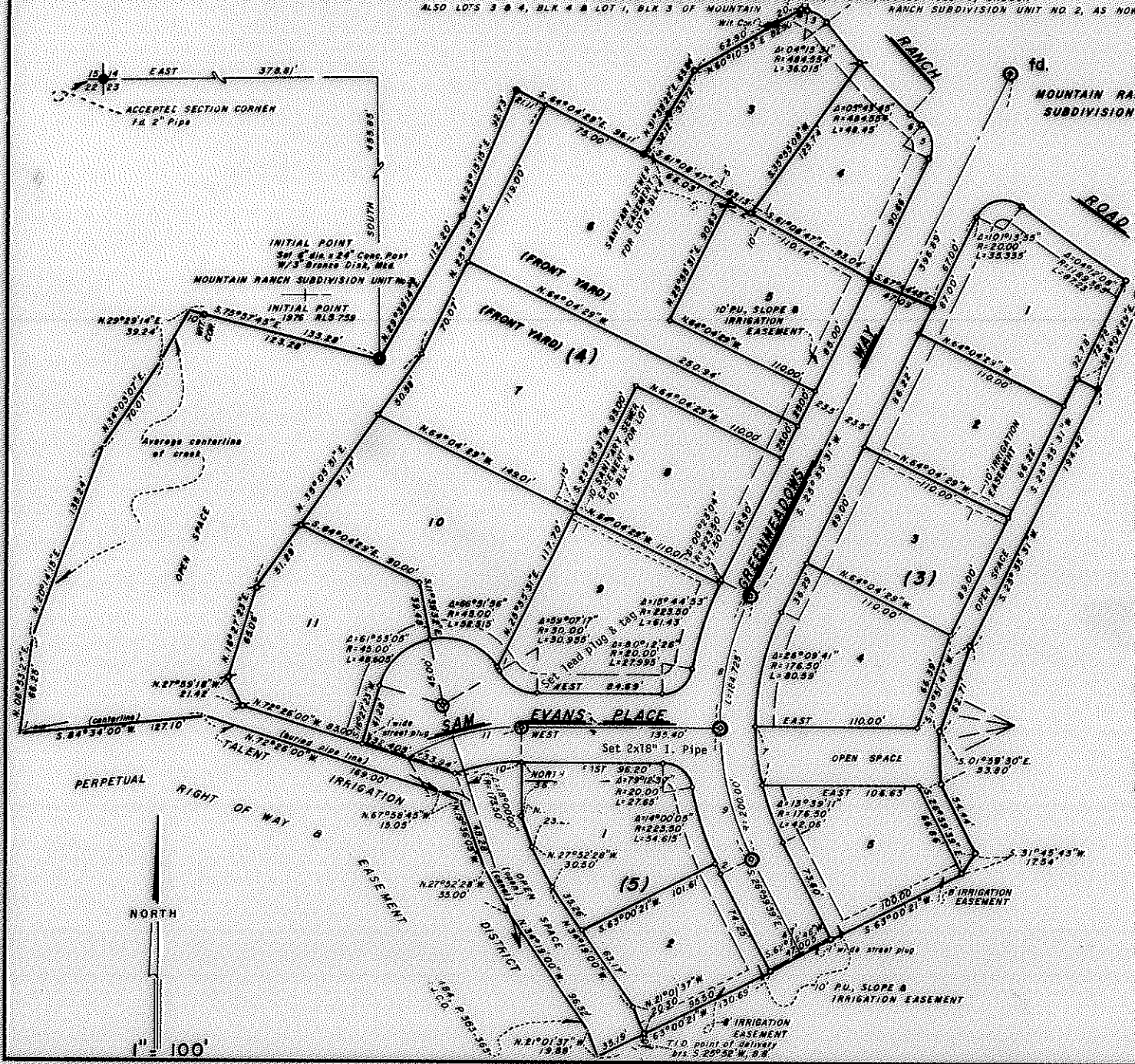
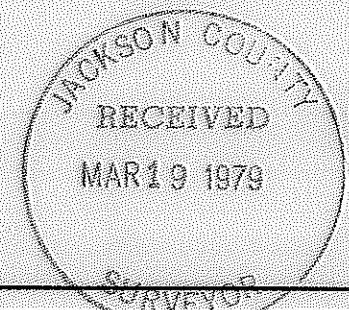
*Allen A. Alling*  
City Engineer

Filed for record this 17 day of March 19 79 at 3:52 P.M.

and recorded in the Official Records of Jackson County, Oregon.

*Waldene Terry*  
County Clerk

*Thomas R. Jewett*  
Deputy



7727