

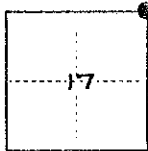
CORNER RECORD

48-4W-9R

COUNTY OF SISKIYOU T. 48 NORTH R. 4 WEST MT. DIABLO MERIDIAN CALIFORNIA

CORNER TYPE: GOV'T. CORNER MEANDER RANCHO CONTROL OTHER

CORNER IDENTIFICATION — DATE OF VISIT MARCH 24 1978



CLOSING CORNER 17|16

2122

CORNER — LEFT AS FOUND FOUND AND TAGGED REESTABLISHED OBLITERATED CORNER REBUILT

PHYSICAL DESCRIPTION OF CORNER FOUND; EVIDENCE AND METHOD USED TO IDENTIFY OR REESTABLISH

FOUND ROCK MOUND AND FOUR ORIGINAL BEARING TREES

PHYSICAL DESCRIPTION OF MONUMENTS REBUILT OR PERPETUATED

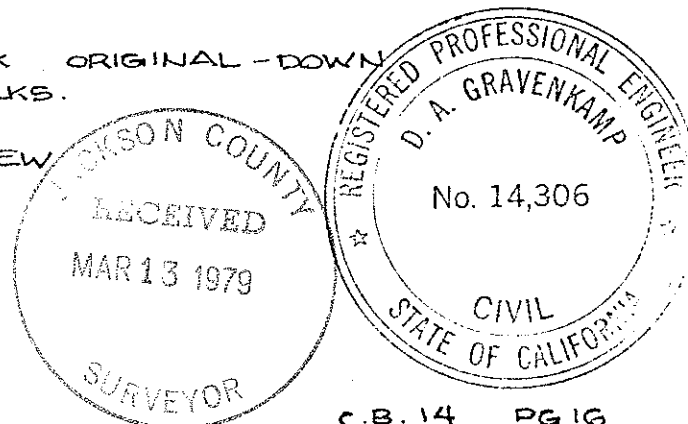
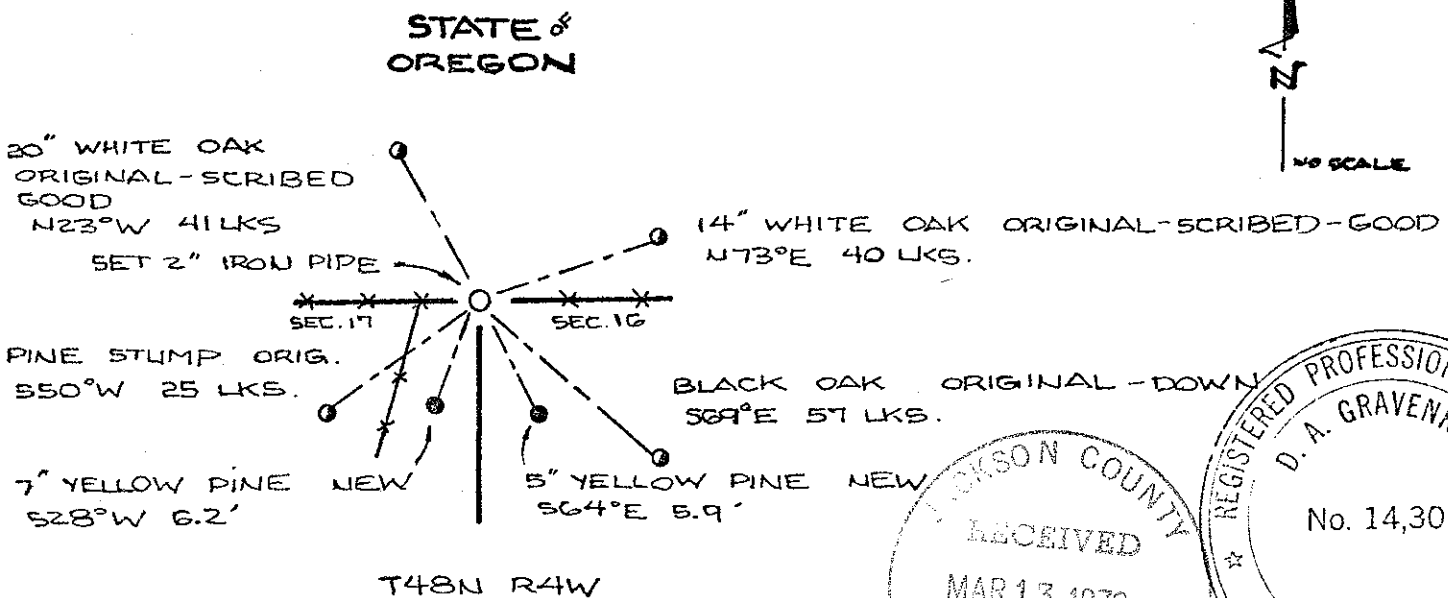
SET TWO INCH IRON PIPE AND SCRIBED TWO NEW TREES

CALIFORNIA COORDINATE SYSTEM ORDER: FIRST SECOND THIRD

STATIONS USED: NGS (USC & GS) STATE COUNTY OTHER STATION _____ STATION _____

ZONE _____ ELEVATION _____ NORTHINGS (Y) _____ EASTINGS (X) _____

SKETCH: (Include reference tie or witness points, remarks and topo of area)



C.B. 14 PG 16

SURVEYOR'S CERTIFICATE

THIS CORNER RECORD WAS PREPARED BY ME OR UNDER MY DIRECTION IN CONFORMANCE WITH THE LAND SURVEYORS ACT ON OCT 25 1978

SIGNED: [Signature]

Eng. or R.C.E. No.: 14306

SEAL

COUNTY SURVEYOR'S CERTIFICATE

THE CORNER RECORD WAS RECEIVED 11-13 1978 AND EXAMINED AND FILED 11-17 1978

BY: [Signature]

TITLE: _____

DOCUMENT No. _____

STATEMENT ON BACK OF SHEET

YES NO

T41-4E

2122