

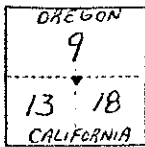
CORNER RECORD

48-4W-1R

COUNTY OF SISKIYOU T. 48 NORTH R. 4 & 5 WEST MT DIABLO MERIDIAN CALIFORNIA

CORNER TYPE: GOV'T. CORNER  MEANDER  RANCHO  CONTROL  OTHER

CORNER IDENTIFICATION - DATE OF VISIT AUG 17 19 77



CLOSING CORNER

7716

CORNER - LEFT AS FOUND  FOUND AND TAGGED  REESTABLISHED OBLITERATED CORNER  REBUILT

PHYSICAL DESCRIPTION OF CORNER FOUND; EVIDENCE AND METHOD USED TO IDENTIFY OR REESTABLISH

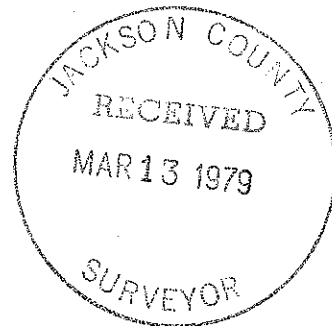
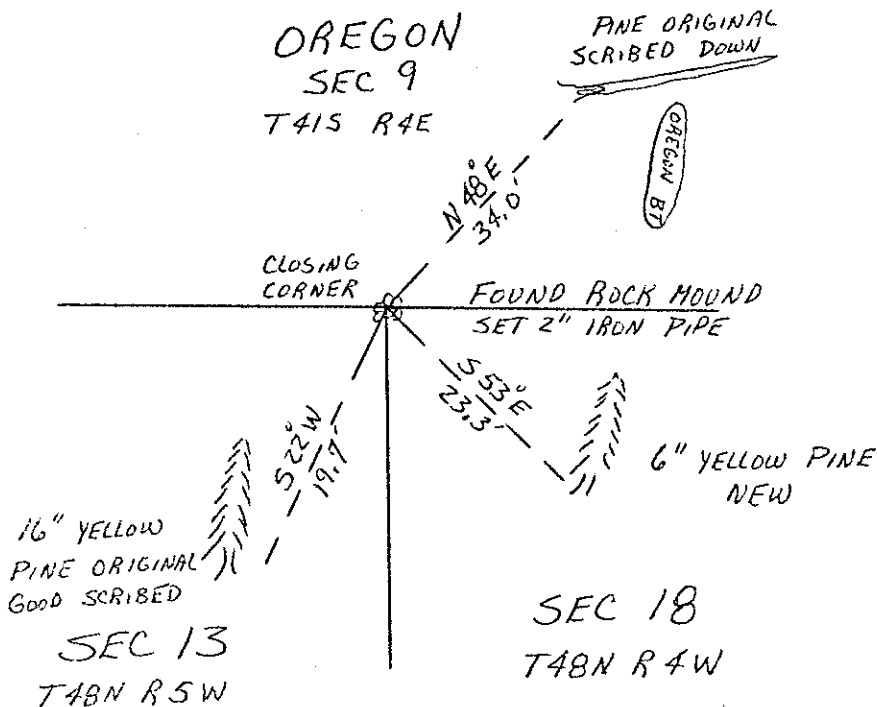
FOUND ROCK MOUND AND TWO ORIGINAL TREES

PHYSICAL DESCRIPTION OF MONUMENTS REBUILT OR PERPETUATED

SET 2" IRON PIPE AND ONE NEW TREE

CALIFORNIA COORDINATE SYSTEM ORDER: FIRST  SECOND  THIRD   
STATIONS USED: NGS (USC & GS)  STATE  COUNTY  OTHER  STATION \_\_\_\_\_ STATION \_\_\_\_\_  
ZONE \_\_\_\_\_ ELEVATION \_\_\_\_\_ NORTHINGS (Y) \_\_\_\_\_ EASTINGS (X) \_\_\_\_\_

SKETCH: (Include reference tie or witness points, remarks and topo of area)



CALIFORNIA

CB 12 PG 63

SURVEYOR'S CERTIFICATE

THIS CORNER RECORD WAS PREPARED BY ME OR UNDER MY DIRECTION IN CONFORMANCE WITH THE LAND SURVEYORS ACT  
ON December 4 19 77

SIGNED: [Signature]  
or R.C.E. No.: 14306

SEAL

COUNTY SURVEYOR'S CERTIFICATE

THE CORNER RECORD WAS RECEIVED 12-15 19 77  
AND EXAMINED AND FILED 12-21 19 77  
BY: Roger & Blake  
TITLE: \_\_\_\_\_

DOCUMENT No. \_\_\_\_\_

STATEMENT ON BACK OF SHEET

T. 41 4E YES  NO

9727