

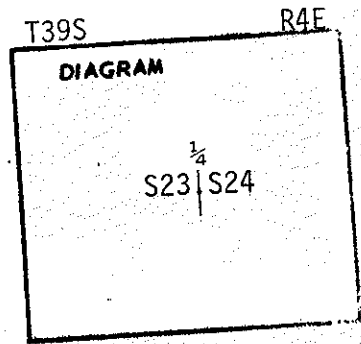
7704

CERTIFIED RECORD OF LAND CORNER MONUMENTATION

History of original corner establishment:

Corner: E $\frac{1}{4}$  Cor, SE23  
Twp. 39S R. 4E  
Original Survey By: E.T.T. Fisher  
Contract Number: 77  
Contract Date: 2-1-1858  
Original Description:

North between sec. 23 and 24  
set quarter sec. corner, from which a pine,  
22 in. dia. bears S78<sup>0</sup>W, 11 lks.  
a pine, 26 in. dia. bears S80<sup>0</sup>E, 5 lks.



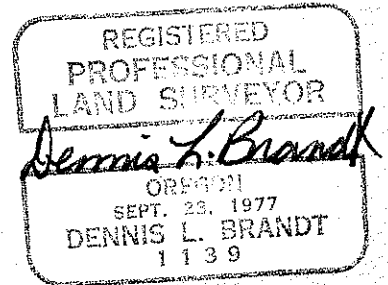
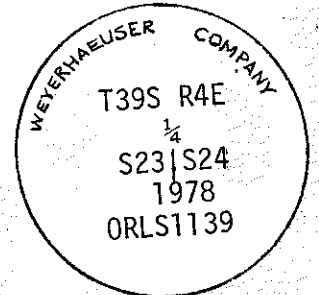
7704

Description of corner evidence found:

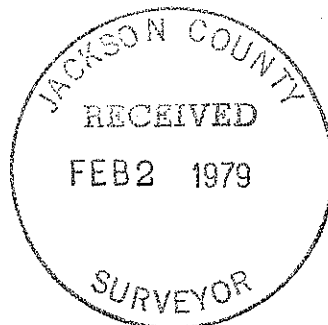
FD. stone mound and six ref. trees  
Brass cap stolen

Description of monument and accessories established to perpetuate the original location of this corner

Set 2 $\frac{1}{2}$ " X 30" iron pipe with brass cap 24" in ground.  
Scribed original BT stump, 24" dia., bearing S78<sup>0</sup>W,  
7 $\frac{3}{4}$  ft., placed w. nail  
Scribed original BT stump, 30" dia. bearing  
S80<sup>0</sup>E, 3 $\frac{3}{4}$  ft., placed w. nail  
Tagged P. Pine, 15" dia. bearing N 61 $\frac{1}{2}$ <sup>0</sup>E,  
a distance of 71 $\frac{1}{2}$  ft. - County BT.  
Tagged P. Pine, 14" dia., bearing S85<sup>0</sup>W  
a distance of 94 $\frac{3}{4}$  ft. - County BT.  
Ref. D. Fir, 15" dia., bearing S76<sup>0</sup>E,  
a distance of 29 $\frac{5}{8}$  ft. w. nail affixed  
Ref. D. Fir, 11" dia., bearing N2<sup>0</sup>W,  
a distance of 35 $\frac{3}{8}$  ft.,  
w. nail affixed.



Office of ..... County of .....  
State of ....., I hereby certify that the within instrument was filed in this office  
for record on the ..... day of .....  
..... by ..... (DEPUTY)  
(COUNTY OFFICIAL)



7704